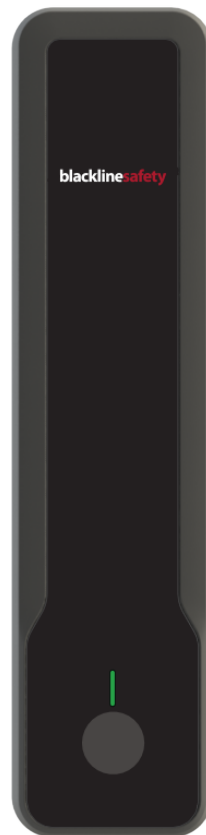


INTRINSICALLY SAFE

LOCATION BEACON



RESPOND TO INDOOR INCIDENTS WITH PRECISION

Precise positioning empowers emergency response

In certain facilities, GPS signals alone may not provide sufficient positioning precision to locate employees during an emergency response. In such circumstances, every second counts and time wasted searching for someone could mean the difference between rescue and recovery.

Blackline Safety addresses this challenge through introduction of our location beacons—compact, wireless positioning transmitters. Installed throughout facilities, each beacon is installed where employees operate, from one per floor to one per room depending on your facility needs. Beacons are then placed on your custom floor plan so you always know exactly where your people are. The affordable beacons are self-powered and wireless, taking only minutes to install without any calibration or triangulation.

Each beacon broadcasts a unique identity number that is received by Blackline Safety's monitoring devices, including G7c and Loner M6. When personnel are within proximity of beacons, monitoring devices store the nearby beacon identities and reports their location to Blackline Live.

Protect the safety of your workforce with Loner Beacon indoor location technology.

Features



Intrinsically safe



Precise location technology



Floor plans and location names



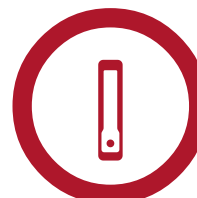
Long battery life



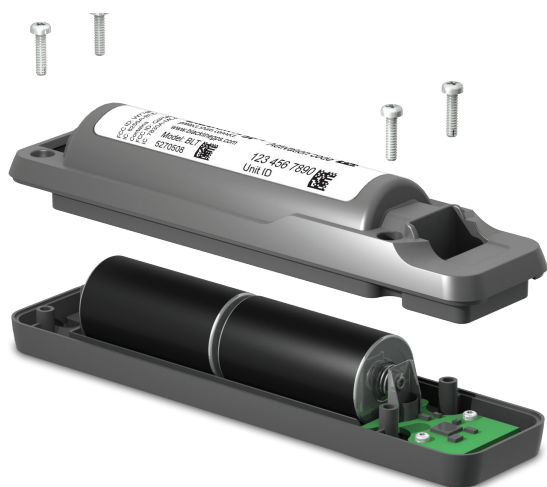
IP65 sealed



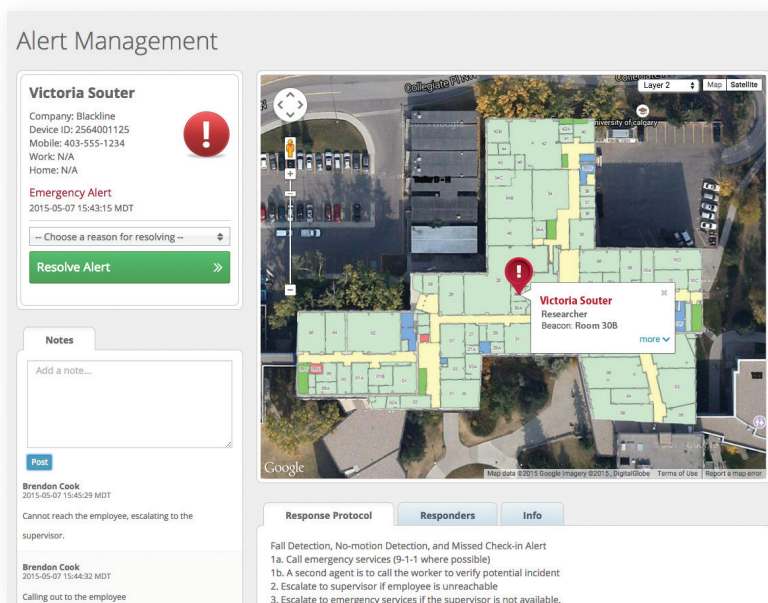
Easy setup



Compact design



Easy Loner Beacon Battery Replacement



Custom floor and site plans are overlaid on top of the interactive Google map

DETAILED SPECIFICATION

Size & Weight

Size: 161 mm H x 40 mm W x 32 mm D (6.4" x 1.6" x 1.3")

Weight: 210 g (7.4 oz)

Mounting

Mounting bracket included

Mounting methods: screws, tie straps, adhesive

Mounting options: walls, wall corners, poles, etc.

Buttons & Indicator Lights

Single button for powering on/off plus configuration

Green LED for power indication and configuration

Red LED for low battery indication

Wireless Communication

Indoor positioning radio: 2.4 GHz to supported Loner safety monitoring devices

Location Technology

Low-power continuous beacon signal enables

Loner safety monitoring device proximity

detection

Beacon Signal Range

Four configurable signal range levels between 4.5 m and 36 m (15 ft and 120 ft) line of sight (less range when obstructed)

Notification Messages

Low Battery communicated by Loner safety monitoring devices

Power & Battery

Batteries: two C-cell alkaline (included)

Battery life: 5 years continuous operation at highest power setting, no wiring required

Environmental

Storage temperature: -40 to 65° C (-40 to 149° F)

Operating temperature: -20 to 55° C (-4 to 131° F)

Ingress Protection: IP65

Regulatory Compliance

Class I, Div 1, Groups A-D, T4

ATEX:  II 1G, Ex ia IIC T4 Ga

IECEX: Ex ia IIC T4 Ga

RoHS

FCC ID: W77BCN

IC: 8255A-BCN

Device Requirements

Loner Portal user account with activated, compatible Loner safety monitoring devices

Warranty

One year limited factory warranty

Wireless Coverage and Activated Service Plans

2.4 GHz operation regions: global

Service plan options: no service plan required

Blackline Live Web Application

Features Include: Beacon map editor, alarm banner, event history, device location mapping, device

management, alert & notification settings and more

Comprehensive safety alert life cycle management:

includes alert configuration profiles, safety protocol,

and emergency contacts

All specifications subject to change without notice.

© Copyright 2016 Blackline Safety Corp. All trademarks, product names and logos are the property of their respective owners.

