

Model NPG30, NPG60 Series Outdoor Gas Grills

Model NPG30, NPG60 Series Outdoor Gas Grills

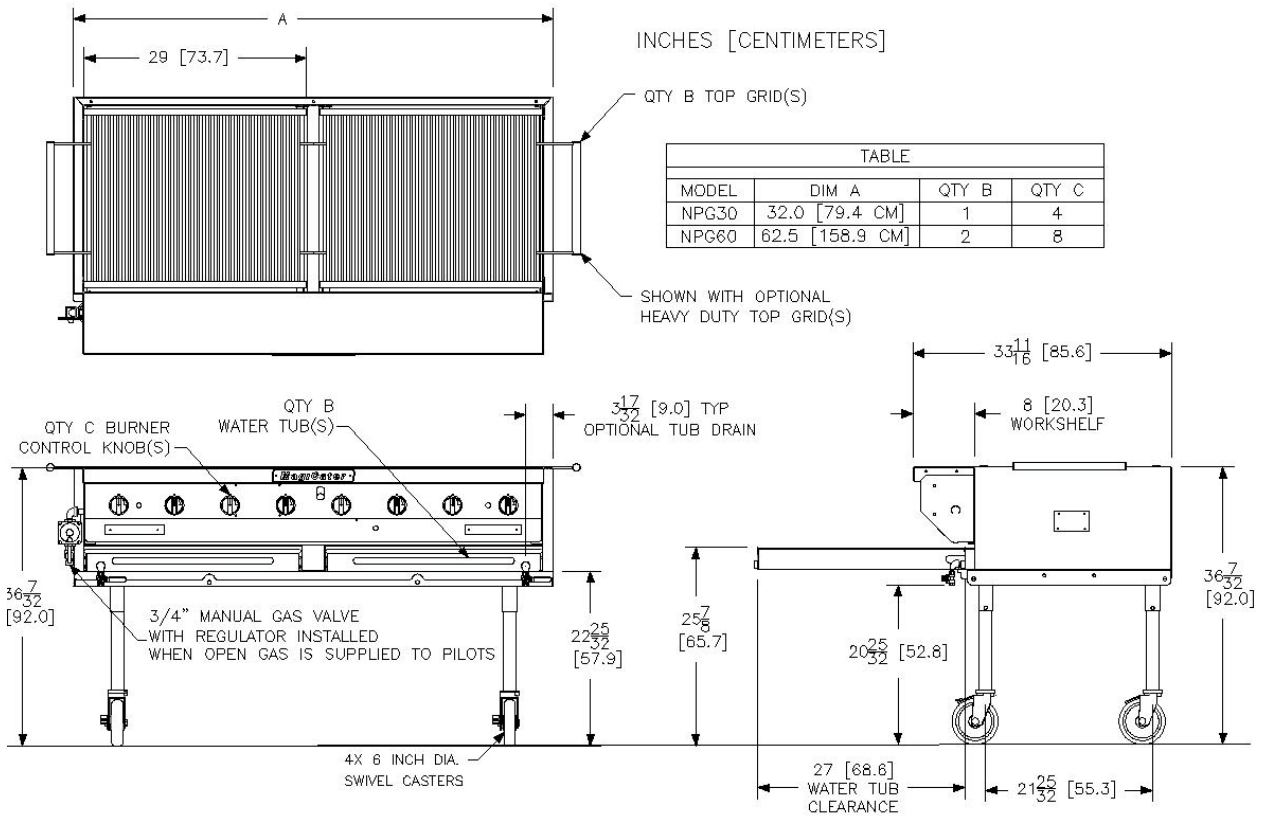


TABLE			
MODEL	DIM A	QTY B	QTY C
NPG30	32.0 [79.4 CM]	1	4
NPG60	62.5 [158.9 CM]	2	8

INDIVIDUAL CHARBROILER SPECIFICATIONS			
Model Size	NPG30	NPG60	
Gas BTU/HR (kW)	80,000 (23.4)	160,000 (46.8)	
Burners	4	8	
Top Grid Cooking Area	696 in ² (4,483 cm ²)	1392 in ² (8,967cm ²)	
Water Tubs	1	2	
Top Grid(s)	29 x 24" (73.5 x 61.0 cm)	(2X) 29 x 24" (73.5 x 61.0 cm)	
SHIPPING INFORMATION (Approximate)			
Model Size	NPG30	NPG60	
Shipping	215 lbs. (98 kg)	288 lbs. (131 kg)	
Shipping Crate L x W x H	41" x 35" x 36" (114cm x 89cm x 91cm)	71" x 37" x 25" (180cm x 94cm x 64cm)	
Shipping Cube	29.9 ft ³ (0.9 m ³)	38.0 ft ³ (1.1 m ³)	
INSTALLATION INFORMATION			
GAS PRESSURE REQUIREMENTS		GAS CONNECTION REQUIREMENTS	
	LP Gas	NPG30	NPG60
Supply Pressure*	11 - 13" W.C (27.4 mbars/ 2.74 kPa)	One (1) LP supply assembly includes: (1) 3/8" NPT regulator (5"-12" WC) (1) 3/8" NPT LP 2 stage regulator (1) 3/8" LP rated gas hose	Two (2) LP supply assembly includes: (1) 3/8" NPT regulator (5"-12" WC) (1) 3/8" NPT LP 2 stage regulator (1) 3/8" LP rated gas hose
Burner Pressure	10" W.C. (25 mbars / 2.4 kPa)		
IMPORTANT- This appliance is intended for outdoor use ONLY.			
* This appliance is intended for use with LP gas bottles in accordance with NFPA regulations.			
CLEARANCES (Can Not Be Mounted W/O Supplied Casters)			
Front min	Floor min.	Non-Combustible material	
27" (68.6 cm)	21" (53.3 cm)	Sides min.	Rear min.
		15" (38.1 cm)	8" (20.3 cm)
SHORT FORM SPECIFICATION			
Provide MagiKitch'n model NPG30 or NPG60 radiant outdoor charbroiler mounted on heavy duty casters. Unit shall be gas heated and shall cook by means of gas burners. Unit shall be Aluminized steel construction, stainless steel fron and service shelf. Provide with independent gas burners. Individual burner controls shall be mounted every 7-1/4 inches for flexible use. Convertible design allows operator to quickly add additional accessories with out the use of tools in most instances. Provide Options and Accessories as follows:			



MagiKitch'n • P.O. Box 501, Concord, NH 03302-0501 • 509 Route 3A, Bow, NH 03304
603 -225-6684 • FAX: 603-225-8497 • www.magikitch'n.com L10-564 Rev 1 05/14 Printed in the USA

We reserve the right to change specifications without notice and without incurring any obligation for equipment previously or subsequently sold.