

Professional Services

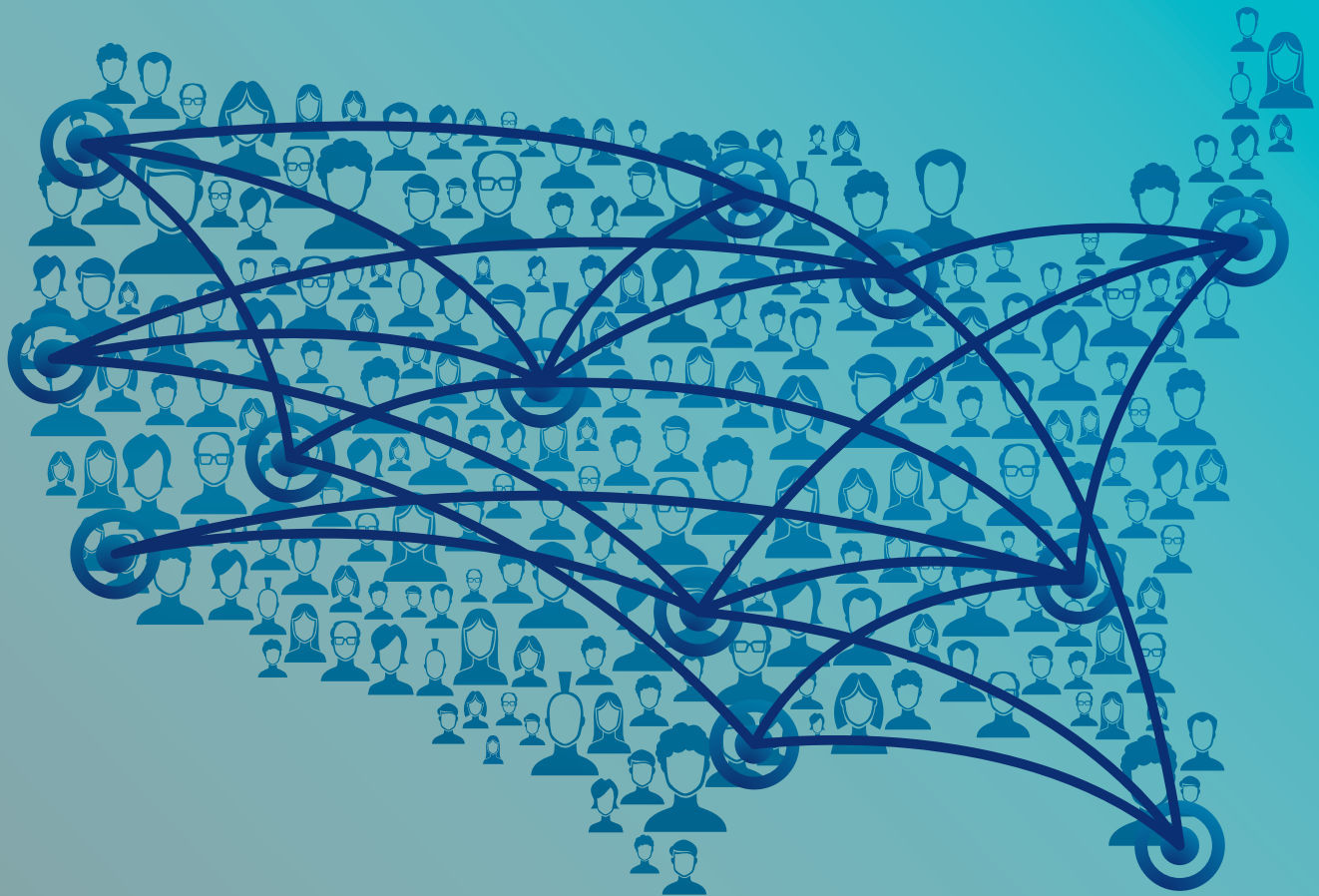


Nextech consulting can help struggling practices return to form,
and well-run practices achieve excellence.



How We Are Different

Hundreds of providers have increased performance and boosted productivity and efficiency with the Nextech Consulting Team.



Nextech's seasoned consulting team keeps a pulse on the healthcare industry and Nextech solutions. The team has early access to version updates and participates in product development to keep client needs top of mind. As a client, rest assured that Nextech consultants are of the highest caliber, with decades of combined experience in practice and clinical management—including marketing and MIPS/regulatory management.

Nextech's team of product and industry experts offer consulting for the following:

Regulatory / MIPS

Ongoing Management
and Attestation

Nextech Select and NexCloud

Electronic Medical Record and
Practice Management Optimization

IntelleChartPRO

Electronic Medical
Record Optimization

Nextech Select & NexCloud Consulting

Practice Management Consulting

Growing healthcare costs and decreased reimbursements hit practices at a pace that exceeds their ability to manage the change. Through a collaborative development process, Nextech Consultants can deliver defined processes and strategies to optimize your clerical and financial workflows.

- Define permissions and preferences to ensure best practices
- Review and optimize front desk processes
- Design provider schedules to encourage more productive and efficient workflows
- Explore top strategies for collecting patient financial responsibility
- Master month-end processes including financial close and reporting
- Examine your marketing effectiveness and ROI
- Focus on patient retention and methods to increase physician referrals
- Recognize financial opportunities with advanced reporting and analytics

Clinical (EMR) Optimization

Fragmented workflows are easily the most frustrating aspect of clinical care. Providers often waste valuable time with unnecessary clicks and dead-end screens. Through detailed assessment and strategic optimization, Nextech Consultants can deliver meaningful workflows to your team that increase productivity and enhance patient care.

- Optimize workflows for medical assistants and nurses
- Create accelerators that facilitate documentation and efficient EMR charting
- Establish and train clinical Superusers
- Implement suggestive coding for E/M CPT coding
- Leverage your patient portal as a marketing tool
- Explore ways to eliminate paper completely and reduce costs
- Customize permissions and preferences using best practices

Products supported: Nextech Select/NexCloud

MIPS Regulatory Consulting

MIPS Regulatory Consulting

Practices find the ever-changing landscape of MIPS both time-consuming and costly to their practice. The Nextech MIPS Consulting services team will help your practice maximize its MIPS scores in each category, so you can focus on your practice and patients.

- Select optimum measures for your practice
- Explore category requirements and scoring
- Review strategies to maximize performance in each category, including tips and tricks within the product
- Set up MIPS requirements in your EMR system to ensure higher capture rate
- Review monthly reporting with recommendations for improvement to achieve the highest score
- Receive MIPS expert assistance with attestation

IN 2017

100%
of Nextech MIPS
CONSULTING CLIENTS
AVOIDED
MEDICARE PENALTIES

MORE THAN

90%
of all Nextech MIPS
CONSULTING PROVIDERS
ACHIEVED A
POSITIVE
ADJUSTMENT
from 2017 attestations

Products supported: Nextech Select/NexCloud/IntelleChartPRO



The number one pain as a practice administrator right now is MIPS. Without our Consultant there to help, we wouldn't meet the goals we needed to meet.

~Kim Viggiano

Practice Manager & RN, Donato A. Viggiano MD, PA

IntelleChartPRO Consulting

EMR Optimization

Inefficient processes are paramount to slow clinics and long patient wait times. Through a blended methodology of Knowledge Base (chart) customizations and consulting, Nextech consultants will increase clinical efficiency and patient and staff satisfaction while reducing the time it takes to see patients.

- Review the optimal patient workflow
- Take a deep dive into documenting patient history
- Achieve best practices for documenting Impression & Plan
- Learn how proper image management can improve charting
- Customize preferences at the practice
- Customize individual user preferences based on role
- Gain an understanding of basic reports

Essentials for New Providers

New providers require time and resources to ensure they understand the product and how to document in the EMR. Through the one-on-one remote training, your new provider can be up-and-running with IntelleChartPRO before day one. This expert team can ensure they are setup, trained to best practices and ready to see patients.

- Complete training on system setup (signature, password, eRx, etc.)
- Review optimal patient history documentation
- Discover efficiency tools to enhance your charting experience
- Expand product knowledge for completing administrative provider tasks (document review, patient calls, prescription refills etc.)
- Optimize provider settings for effective patient review
- Ensure basic knowledge and profile needs are met before day one of patient care

Products supported: Nextech IntelleChartPRO



"Having a dedicated specialist to help customize the program to the client's needs is almost a necessity. [Our consultant] predicted our needs and alerted us to problematic situations that we might never have realized existed until much further along in our use of the system."

~Stuart Horowitz

Practice Manager, Brook Plaza Ophthalmology

Is Consulting for you?

	YES	NO
Do you worry that your reports are never right?	<input type="checkbox"/>	<input type="checkbox"/>
Are you spending time and money on paper processes (when you wanted to be paperless)?	<input type="checkbox"/>	<input type="checkbox"/>
Are you paying staff overtime to complete processes?	<input type="checkbox"/>	<input type="checkbox"/>
Are your revenue cycle and financial processes meeting industry standards?	<input type="checkbox"/>	<input type="checkbox"/>
Do you struggle to stay current on MIPS changes? <i>Does this lead to inaccurate reporting for your providers?</i>	<input type="checkbox"/>	<input type="checkbox"/>

**If any of these were yes, it's time for a change.
Professional Services is here to help. 813-425-9200**

Nextech, the leading specialty-specific EMR and Practice Management provider, helps practices increase efficiency and profitability across all functional areas through fully integrated software solutions. Nextech's intuitive design and customizable templates work seamlessly with the needs of specialty practices to enhance productivity and overall patient care.

Visit www.nextech.com to learn more.

(800) 868-3694



Nextech.com