

Nextech Analytics: Practice Optimization

Improve Business Performance and Clinical Operations



PRODUCT PAPER

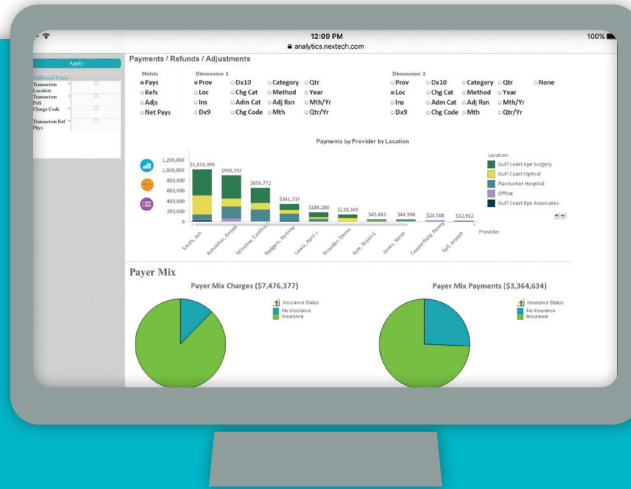
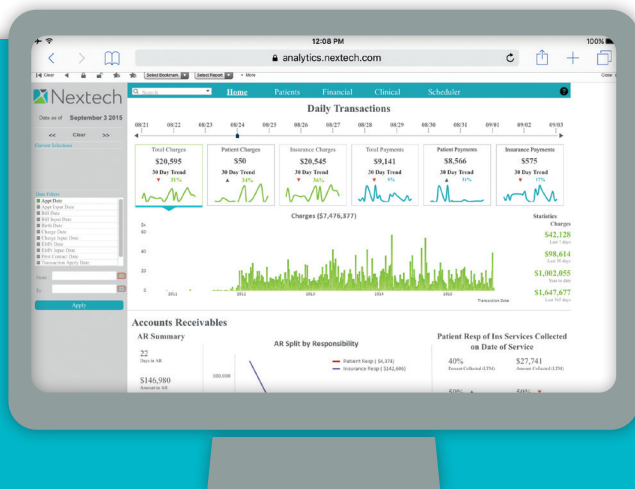


The Benefits of Nextech Analytics

In this era of reduced reimbursements, pay for performance, and increased patient volumes, specialty practices need a solution to help them understand and optimize practice performance. Nextech has introduced Nextech Analytics, a solution that allows physicians to gain better visibility across their practice, improving both business and clinical performance, all at the click of a button. Nextech Analytics is a groundbreaking solution, empowering physicians and administrators to visualize the overall health of their practice and drive strategic decisions to maximize patient retention and profitability.

Nextech Analytics is fully integrated with the Nextech application, displaying your data in prebuilt graphs via your web browser so that you can develop a better grasp of your practice's strengths and needs, as well as identify potential actions

- Fast and powerful visualization capabilities allow instant manipulation of Nextech data, eliminating the need to run reports or use Excel to manipulate data
- Includes prebuilt dashboards, allowing you to visualize your Nextech Practice data at a glance or drill-down for more detailed analyses
- Interprets your pertinent data into prebuilt graphs that allow you to quickly understand practice performance and identify where problems may be occurring
- Allows you to easily set, manage, and report on practice goals
- Provides an easy to understand picture of workflow, financial analysis, and resource utilization
- Implementation is effortless and customers can view their data through Nextech Analytics within 24 hours of sign-up



Take the Guesswork Out of Managing Your Practice



Home Page

- High level overview of practice data enables quick analysis of productivity and financial standing
- Dashboard provides multiple views of charges and payments (day-over-day, last 30 days, last 7 days, year-to-date, and last 365 days)
- Accounts Receivable Summary
 - Days in AR and Amount in AR
 - Month over Month
 - Date of Service Collection
- Utilization and Efficiency analysis helps to optimize clinical efficiency and maintain a desirable schedule



Maximize Revenue and Optimize Efficiency

Nextech Analytics enables you to select different views and to drill-down through your data to find root cause relationships and outlying data trends.

Nextech Analytics displays your practice performance trends over time, with similar timeframe analyses such as:

- Historical Trending Data Analysis: interprets data from your practice's past, helping you to better prepare for the future
- Time Frame Data Comparison: allows you to compare one period of time with another, such as year-over-year, month-over-month, and so on

The rise of EMR has created a world in which medical professionals now have access to a wealth of day-to-day data. Unfortunately, much of this data is never put to use or is simply spun into unintuitive reports that offer no real insight on such issues as billing trends, scheduling patterns, inventory problems, or clinical outcomes.

Nextech
Analytics
provides a 360
degree view of
your practice.

Nextech Analytics
provides a quick,
comprehensive snapshot
of key metrics across
financial, patient,
scheduling, and clinical
areas of the practice.
Users are able to drill
down into layers of easy
to access core data,
which leads doctors
and administrators to
identify trends, find areas
of improvement, and
discover opportunities
for growth.



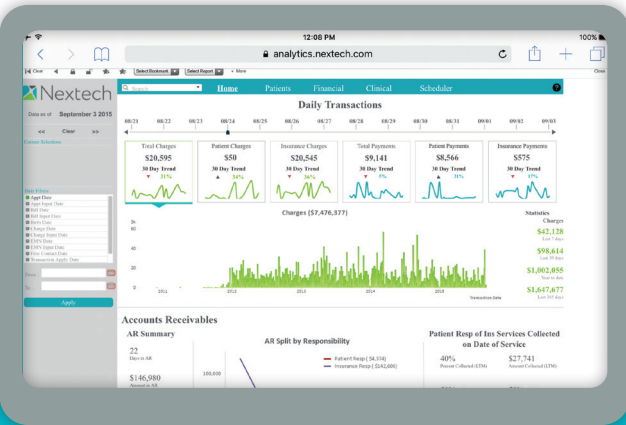
Clinical Tab

- Multidimensional EMN analysis helps you to avoid missed claims and practice makeup
- View a breakdown of clinical demographics with a host of filters such as appointment dates, smoking status, gender, age, language, and first contact date

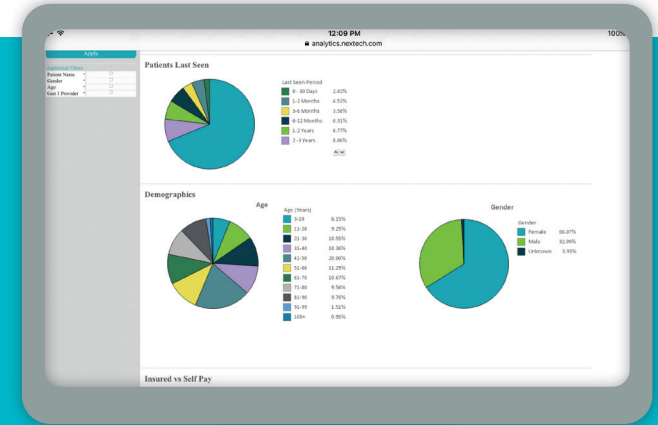


Patients Tab

- Multidimensional Analysis of Patient Data
 - Referring Physician
 - Referring Patient
 - Main Provider
 - Main Location
 - Zip Code
 - ICD-9
 - ICD-10
 - Charge Code
- Patients Last Seen
- Age Demographics



Improve Business Performance and Clinical Operations



Finance Tab

- Overview of all financial activity
- Charges Report: trending practice charges to identify swings in practice behavior that will impact cash flow
- Payments/Refunds/Adjustments
- 3-Level Charge/Payer Mix Reports
Insurance vs. No Insurance | Insurance Type | Insurance Providers (per type)
- Aged Receivables
Median Days to Collection: Predict cashflow based on payer behaviors and identify slow downs in behavior
AR Split by Responsibility: Monitor collection performance through comprehensive Aging AR reporting AR by Financial Class/Insurance Type
- Practice breakdowns to monitor changes in payer mix that could impact cashflow



Scheduler Tab

- Schedule Utilization information can help you find new ways to capitalize on revenue opportunities.
- Patient Appointment Behavior information allows for best template configuration
 - Clinical Efficiency breakdown allows you to view time consumption for various stages of patient visits:
Checked In | Next | Ready for Doctor | With Doctor
With Nurse | Ready for Nurse
 - View month-to-month appointment cancellation percentages, as well as reasons given for patient cancellations and time periods in which cancellations occur
 - Graphical displays of schedule factors such as Rescheduled Appointments, Patient Visit Frequency, and New vs. Established Appointments



Nextech Analytics

Can Make Your Data Work for You

5550 West Executive Drive, Suite 350 || Tampa, Florida 33609 || p: 866.857.8557 || Nextech.com