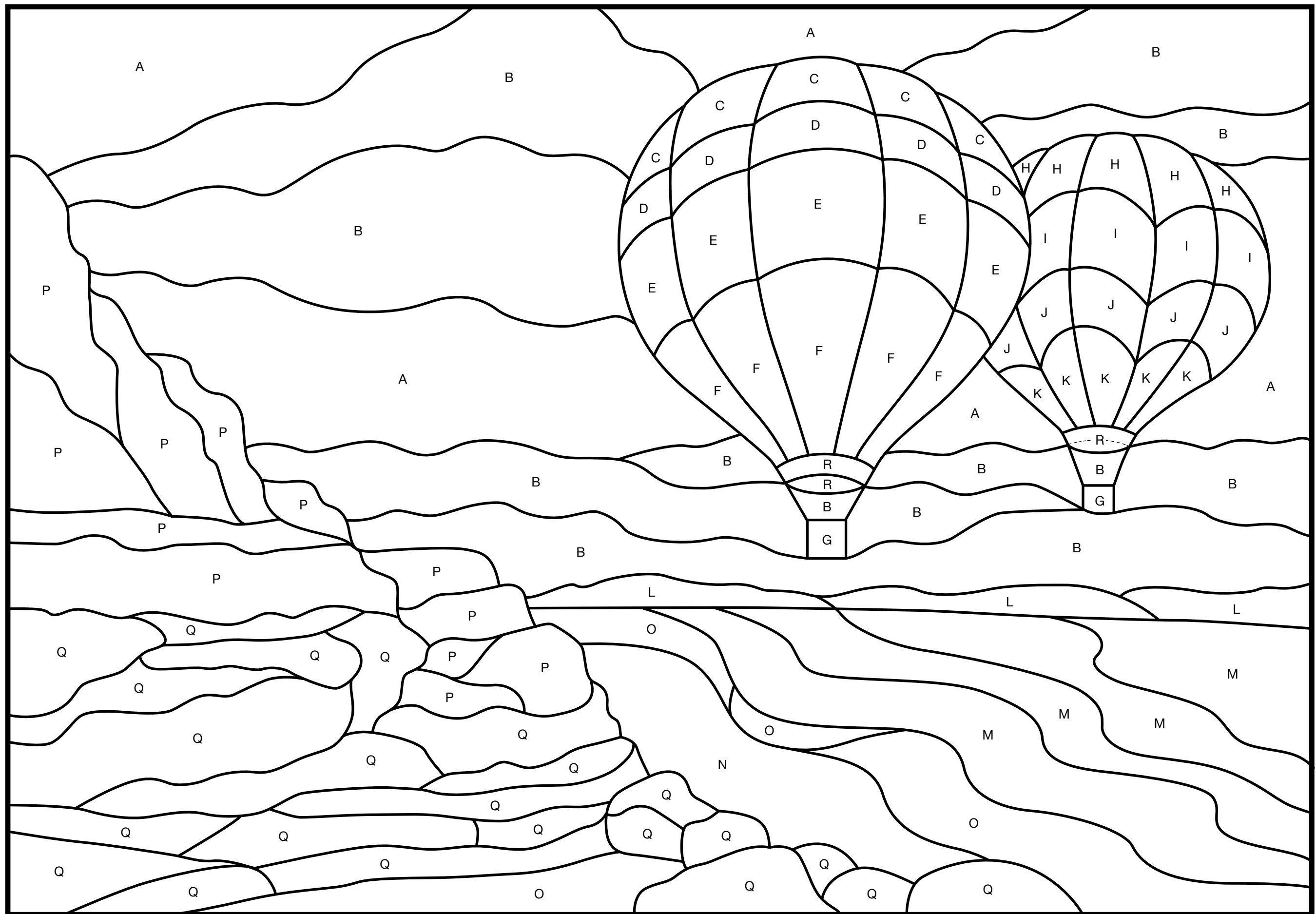


PATTERN PLĀ

Flights of Color

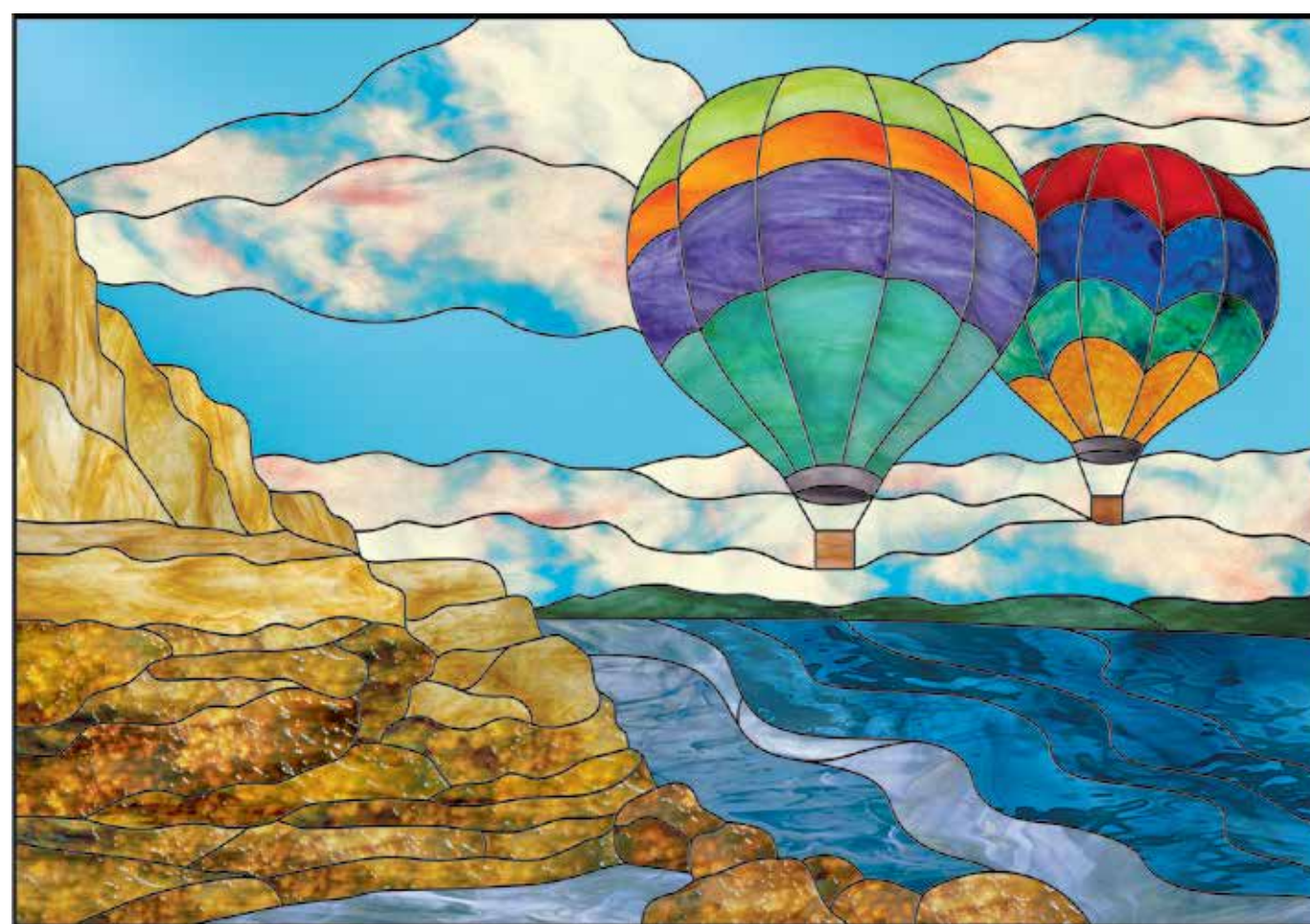
© Oceanside Glass & Tile 2017

May be reproduced for personal, or classroom purposes.



It is recommended for larger patterns that a "U-Channel" Zinc border be used on the outer edges to secure the piece.

NOTE: The dashed rule, inside the balloon rim on the right, indicates the addition of a small piece of curved copper wire that should be attached, fluxed, soldered, and treated with same patina as used on the rest of the soldered lines.



Glass Suggestions

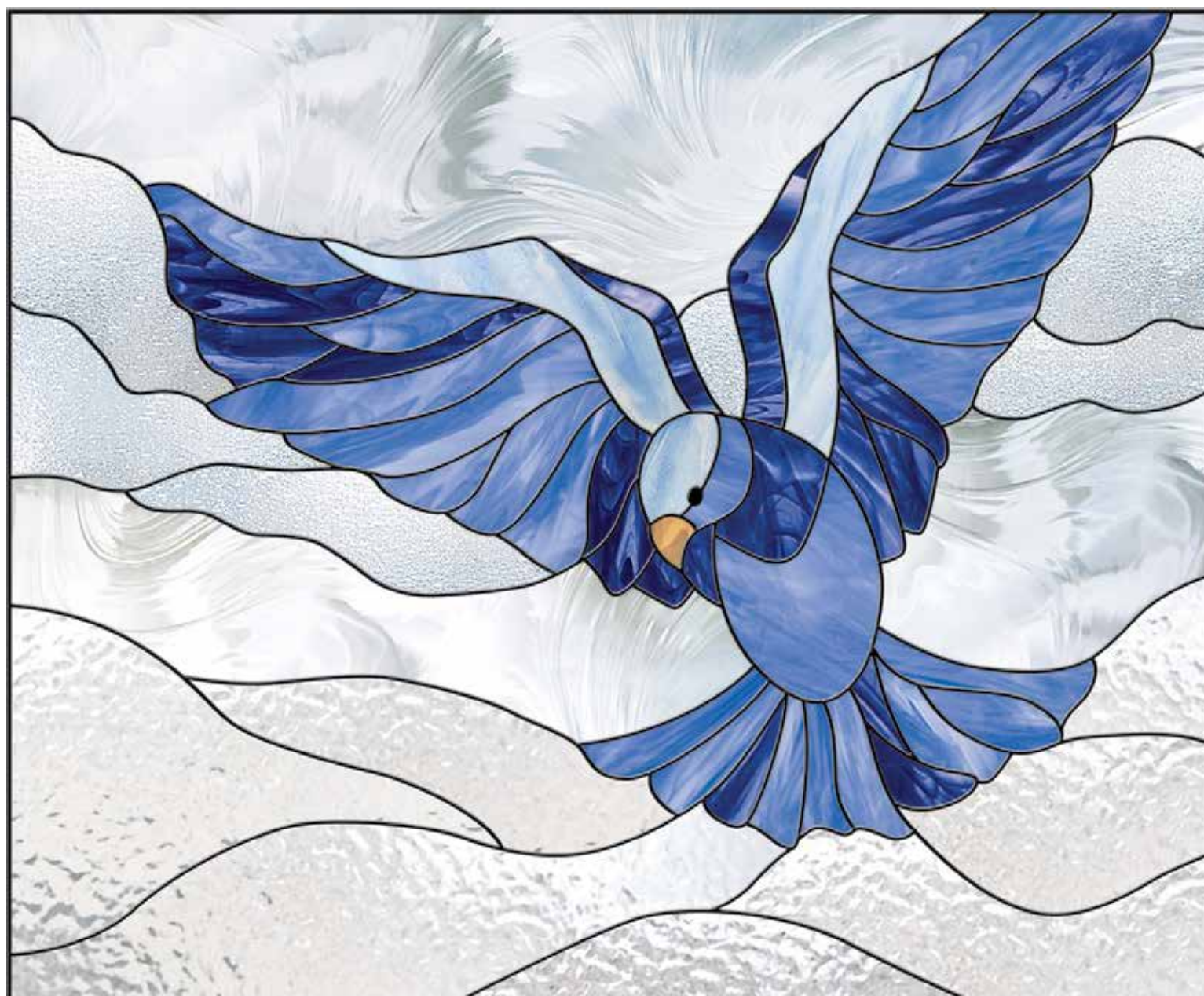
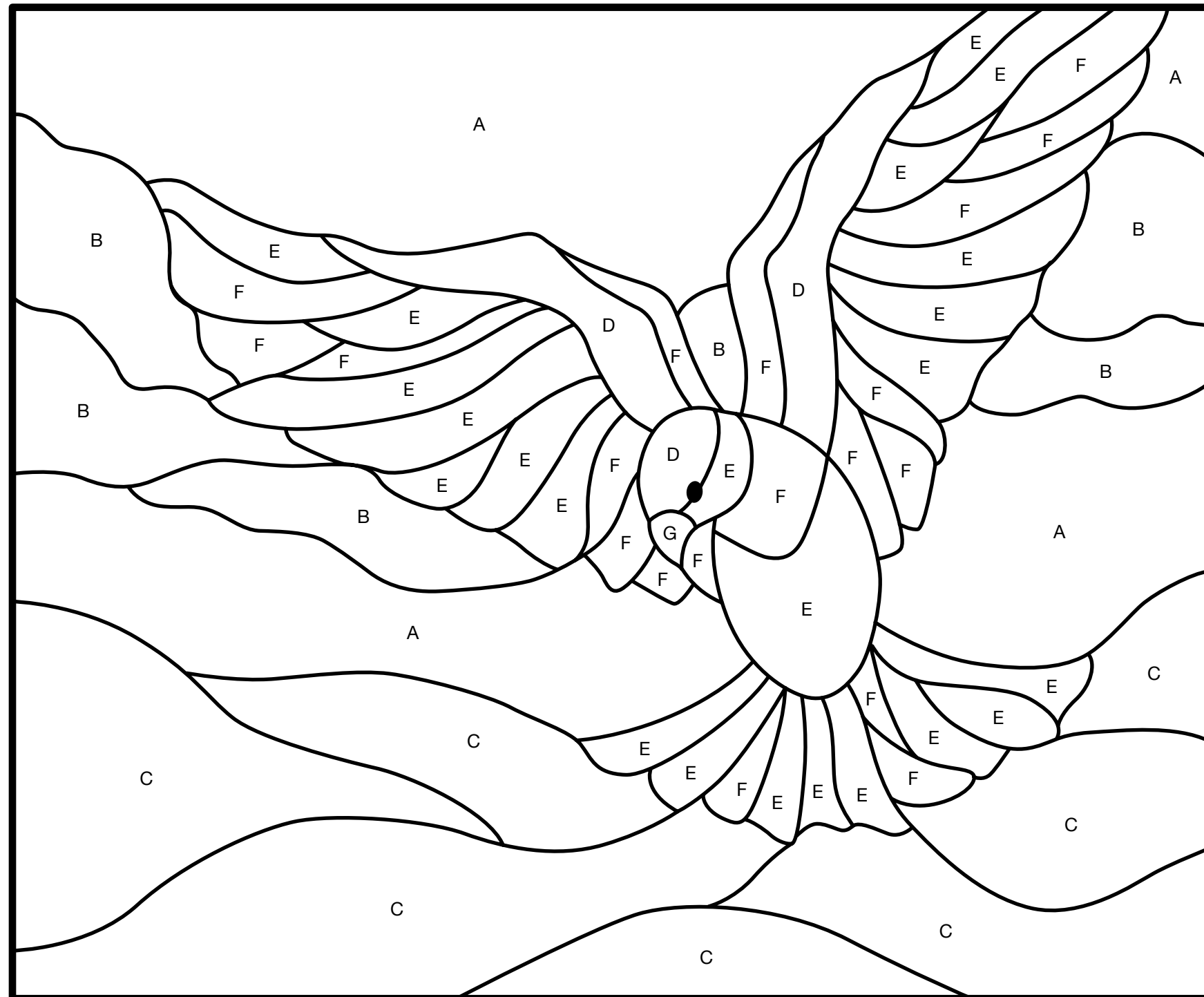
			
A. 533-15 Sky Blue, Smooth	B. 60-466 Sky Blue/White/Pastel Pink, Streaky	C. 6022-81CC Key Lime, Pearl Opal	D. 6076-83CC Inferno, Pearl Opal
			
E. 6043-86CC Purple Haze, Pearl Opal	F. 6023-83CC Aqua-Lime, Pearl Opal	G. 315-6S Dark Amber, Smooth	H. 00-621 Red/Orange/Yellow, Ring Mottle
			
I. 00-545 Blue/Plum/Green/Purple, Ring Mottle	J. 10-869 Giverny Pond, Fracture	K. 00-361 Goldenrod Opal/White, Ring Mottle	L. 422-1W Deep Olive/Sea Green, Waterglass®
			
M. 433-1W Deep Steel/Sky Blue, Waterglass	N. 838-94S Steel Blue/White, Wispy, Smooth	O. 838-74S Steel Blue/White, Smooth	P. 6011-83CC Golden Honey, Pearl Opal
			
Q. 65-17 Light Brown/Dark Brown, Streaky	R. 6009-8CC Thunderhead, Pearl Opal		

PATTERN PLĀ

Homecoming

© Oceanside Glass & Tile 2017

May be reproduced for personal, or classroom purposes.



Glass Suggestions



A. BR/CLEAR
Clear, Baroque™



B. 100NSEEDY
Clear, Satin Seedy



C. 100CC
Clear, Corsica



D. 603-81CC
Blue Skies, Pearl Opal



E. 337-2S
Light Blue/White, Smooth



F. 838-96S
Navy Blue/White, Wispy, Smooth



G. 317-02S
Pale Amber/White, Smooth