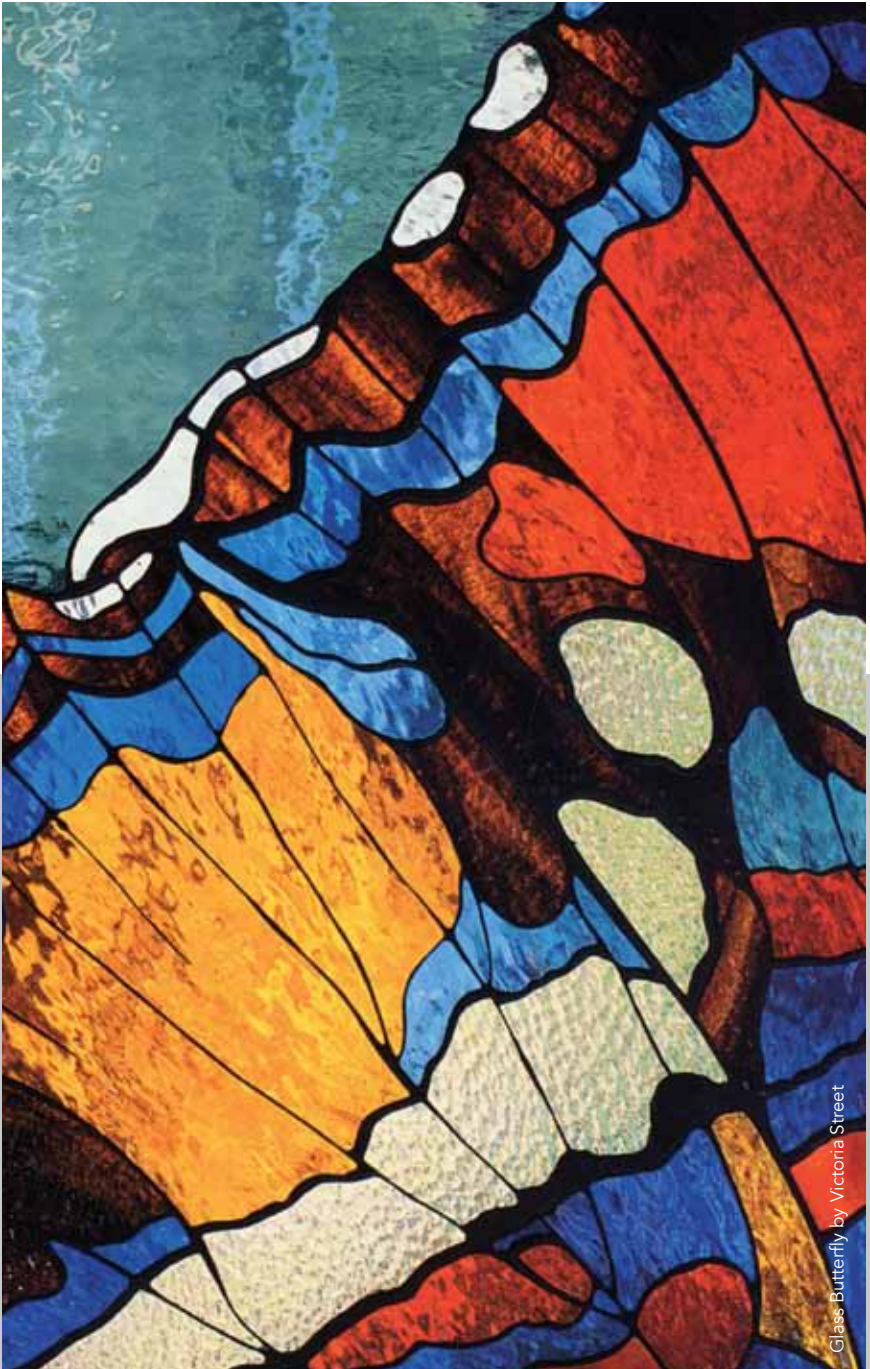


PLĀ



Glass Butterfly by Victoria Street

PEOPLE LIVING ARTFULLY

ART is not
essential to life,
just to feeling
alive.

- Oceanside Glass & Tile

Dear Glass Enthusiast,

Welcome to People Living Artfully! The project guide to keep you musing about your next artistic endeavor. Oceanside Glass & Tile loves a good playground - some of their greatest creations have manifested during PLĀ time! We are so excited to see how the kid in you manifests through your artful self expression! We hope this guide will be the catalyst that perpetuates the joy Spectrum® Glass and Uroboros® Glass inspires and becomes a platform to help this beautiful legacy live on.

It is our great honor to remind you. A work of art is shining within you! May every soul your art touches feel lighter, burn brighter and experience inexplicable delight. May your artistic expression uplift the spirits of those you hold dear, to those you hold close, throughout every beautiful moment of life.

We invite you to share your work, tell your stories and spread the joyful spirit of PLĀ!

In Gratitude,

Stephanie Leilani

Editor of PLĀ



WE ASKED



Eric Lovell
Founder & Owner
Uroboros Glass Co.

“ ”

Glass, specifically decorative colored glass, has shaped my entire professional life. Learning and developing new glassmaking technologies, creating glass colors and forms to fit artist's unique needs, and being involved in the incredible evolution of the art form since the 1970s, have all been tremendously fulfilling to me. 2016 marks the end of a great era for glass, but 2017 is the beginning of another, with even greater potential than the ones before.



Kyle Barker
President
Spectrum Glass Co.

“ ”

I grew up in the glass industry and it has impacted me in many ways. Reflecting on Spectrum's history - it's pretty cool to think about the focus generally revolving around shaping the glass. Turns out the glass has shaped me just as much. It's introduced me to a world of great people, those that make the glass, those that sell the glass and the artists who create with the glass. Everyone is so unique, it's been an honor to be a part of this incredible community.

HOW HAS THE GLASS SHAPED YOU?



Sean Gildea

*Owner & President
Oceanside Glass & Tile*

“ ”

My uncle, Boyce Lundstrom was the idea guy behind Oceanside Glass & Tile, and brought me in as one of 4 founders of the Company. This history has grounded me in the Art Glass community and created a profound appreciation for the craftsmanship of the stained glass market, artists and enthusiast. The quality and beauty of the Uroboros and Spectrum products is inspiring and has us looking forward to creating amazing glass. I never imagined we would have the opportunity to continue such an incredible legacy – it has been a huge honor and humbling time for me personally. I am sure Boyce is smiling down on our 3 companies for finding a way to help the glass movement live on.



Johnny Marckx

*Owner & Executive VP
Oceanside Glass & Tile*

“ ”

I've been learning with glass for over 20 years. Play is serious work, and there's no easy way with glass. It teaches flexibility and commands respect, this gem-like substance. The future has a light filled lens, a fresh perspective on collaboration that our art glass expansion will coalesce. Glass in all its malleable forms brings magic to our world. I still marvel at its unexpected beauty. It's music for my eyes.

MOVERS AND SHAKERS



Ice Vase
by Mary Harris
harrisartglass.com



Dream
by Deborah Walker
colorsofglass.net



Aloha Friday
by Michelle McKernan
michelles-mosaics.com



Phoenix
by Anne Sorensen
annesorensen.com.au

Calling all dreamers, makers, movers and shakers! This is a sacred space we will be reserving to share your beautiful works. There is inspiration all around us and we've seen the unique expressions that the users of Spectrum Glass and Uroboros Glass manifest. We look forward to celebrating your visions, your creations, your pure imagination. If you're interested in being featured in upcoming issues we would love to see pictures of your original works! Share your artistic expression to artglass@glasstile.com with your stained glass patterns and finished designs, fantastic fusing, stunning slumps and mosaic miracles!

Open Letter to the Art Glass Community

Living in Southern California I have been privileged to meet the amazing team at Oceanside Glasstile. From first-hand experience I can report that the art glass community is fortunate such a thoughtful, innovative and open-minded company was able to take on two of our industry's major glass producers. While last year's closure announcements from Spectrum and Uroboros generated a sense of loss and confusion, a wave of optimism and enthusiasm has replaced those memories. OGT is ramping up and getting involved in our community at a rapid pace; welcome!

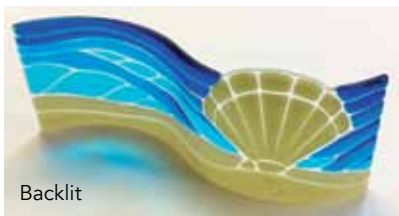
Sincerely,

Steve Shupper
VP, KBW Foundation
Director, Glass Accessories Int'l

ARTIST'S TECHNIQUE: SEASIDE TREASURES A SYSTEM 96® PROJECT GUIDE



Reflective Light



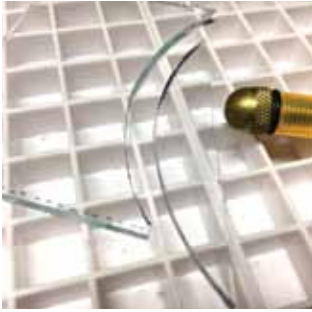
Backlit

To download the cutting template (requires printing on legal-sized paper) and a full list of project supplies, please visit: www.glasstile.com

The simple “S-curve” display piece is very easy to make and displays well in reflective light, or backlit (flickering tea lights behind it can add a fun effect). A small amount of space between each piece of glass, and a light Contour firing schedule adds interest to this design.

step 1

On the clean piece of 12 in. x 5 in. 100SF Clear glass (project base), starting at the bottom and moving to the top of the piece, measure 4-1/8in. and draw a horizontal line from edge to edge with your Sharpie Fine Point pen. Place the Clear glass over the pattern (bottom of the glass lining up with the bottom of the pattern box), and trace the upper curved support piece for top of shell, exactly where it is indicated on the pattern). Draw two tiny tick-marks where the two ends of the curve will marry up with the main piece. Score and run your horizontal line.



step 2

Cut off excess glass to right and left of traced curve on the remaining piece of Clear glass and score the curved line you have drawn. Carefully “break” this piece out using your grozier/breaker pliers, or by using the “tapping” technique.

TIP: Using the oil cap on the top of your cutter, gently “tap” the underside of the score at one end, working your way down to the other end of the score. With the right amount of pressure on your “tapping”, you can get curved edges to easily “run” and fall off (watch that your pieces have a safe place to land).



step 3

Apply a “PINPOINT” of Elmer’s glue on each corner of the larger clear glass, and place it down on the smoothest side of the POPYROS paper, about $\frac{1}{2}$ - $\frac{3}{4}$ in. from the bottom of the paper and centered side-to-side so the base is glued to the POPYROS. Next, apply pinpoints of glue on the underside of the small curved section of Clear and affix to the POPYROS, bumped snug against the top of the base glass (using tick marks and pattern to guide you).



step 4

Cut a piece of Saral transfer paper to 4 in. x 4 in., place it between the Vanilla Cream Opal glass and the pattern, and using the ballpoint pen, trace all the seashell pattern lines onto the glass. After tracing, using the fine point Sharpie pen to write the letters of each pattern piece for the sheet on each section to be cut (this will ensure you reassemble the pieces correctly).

NOTE: Your shell will be smaller than the space allotted for it on the main pattern guide so you can fan the pieces out after cutting to give them “breathing room”.



step 5

Using the traced lines as your guide, cut the outside edges of the opal seashell first, next cut and remove the "O" piece. Now score all vertical lines of the seashell and run the scores. Score and break off the smaller upper sections of the seashell next. Keep track of all of your labeled pieces. Now, trace, score and run your three "D" opal glass pieces.

TIP: For smoother score runs, rotate the seashell so that the top (widest section) of the seashell is facing you, then GENTLY run each score downwards, using running pliers. Use the grozier pliers on the upper sections of the seashell (A, C, E, etc.)



step 6

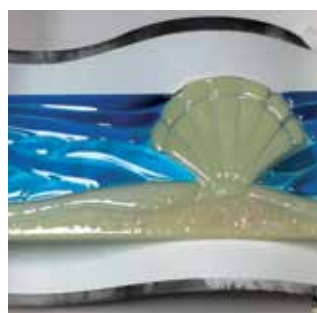
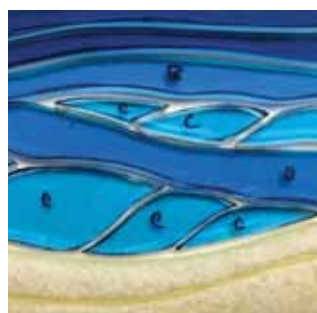
Using the pattern color legend, start tracing your Blue glass pieces (using the pattern underneath the transparent glasses) and label each piece with the Sharpie marker. Score and very gently run each piece, sanding off any flares or edges that need slight adjustments.

TIP: Keep a second copy of the pattern that you can use to check you glass cuts --- this will make it easier to see if any pieces need adjusting before you assemble the entire piece on the glass base.



step 7

Lay your three "D" opal pieces down (nestled together) on some scrap paper. Using the paint brush, spread a thin layer of Klyr Fire, or spritz glass with a bit of hairspray and then sprinkle with various Frits to add interest to the "sandy" area. Go lighter on the addition of the darker colors and use Vanilla Cream Opal Medium more generously. Spritz again lightly, then following the pattern, affix pieces in place to the base using pinpoints of glue.



step 8

Using the pattern as a visual guide, assemble your pattern pieces on the base, working from the bottom to the top. Affix the glass pieces where each belongs using PINPOINTS of glue. Remember to fan out the pieces of your seashell at the upper sections to allow breathing room between each piece (as shown in photo).

TIPS: If any pieces aren't fitting as well as you'd like, you can sand them using a diamond pad, or grinder. Remember though, it's okay if they aren't perfect. Try to avoid the Vanilla Cream pieces from laying too close to the Copper colored Blue glasses to avoid creating undesired red outlines/"reactions" where they meet.

step 9

Lifting from the sides of the POPYROS, transport piece carefully to the kiln. Fuse using the firing schedule below. Upon completion of the firing and cool, down periods, line an "S-curve" stainless steel mold with a piece of 13in. by 6in. POPYROS, then lay the fused piece so that the seashell is over the raised section of the mold's hump. Slump using supplied schedule.

FUSING SCHEDULE USED

Step	Rate	Temp (°F)	Hold (mins)
1	300	300	15
2	300	1150	20
3	300	1380	10
4	9999	950	60
5	200	800	10
6	300	100	0

SLUMPING SCHEDULE USED:

Step	Rate	Temp (°F)	Hold (mins)
1	250	250	15
2	250	1050	30
3	300	1200	10
4	400	950	60
5	200	800	10
6	300	100	0

SYSTEM 96® SHEET GLASS

100SF-Ice, Icicle Clear
 210-73SF, Vanilla Cream Opal
 533-3SF, Deep Aqua
 533-2SF, Blue Topaz
 533-1SF, Sky Blue
 210-72SF, Almond Opal

SYSTEM 96 FRIT

F3-2103-96, Vanilla Cream Opal Medium
 F2-200-96, White Opal Fine
 F2-2101-96, Ivory Opal Fine
 F2-57-96, Walnut Fine (or F2-5181-96 Bronze)

PLĀ

PARTNERS

A huge shout-out for the incredible love we've received from so many of our amazing new industry partners! You have all reached out to us in some way and given us such a warm welcome to our community. We also wish to give a huge thank you to our dedicated Distributors and Retailers worldwide for your commitment to standing with us as we take on the production of Spectrum and Uroboros' many beloved products. We couldn't do this without you!

We'd also like to recognize all the hard work and dedication the tireless instructors and assistants pay forward to eager attendees and glass enthusiasts! Last but not least, to the Las Vegas Management Administration & Staff, THANK YOU for an amazing platform that allows the glassiest of the glass arts to share their products, services and passions.

Lastly, we'd like to send the warmest of wishes to all the staff (as well as their families and friends) of Spectrum Glass Co. and Uroboros Glass Co. You have dedicated a lifetime to crafting quality artisanal glass. Your passion for the product and the people of this industry is humbling. We feel truly privileged that you have honored us with responsibility of continuing this amazing legacy.

Our Sincere Thanks,
The OGT team



PEOPLE LIVING ARTFULLY