



# Construction & Facilities Support

Product & Service Solutions  
to optimize your business



# Construction

## TABLE OF CONTENTS

### OVERVIEW

CATEGORY OVERVIEW .....	3
HOW WE WORK WITH YOU .....	4
CONSTRUCTION PRODUCTS & MATERIALS .....	5
CONSTRUCTION SERVICES .....	6

### PROGRAMS

ROOFING MATERIALS .....	7
ROOFING LABOR .....	8
LAMPS AND BALLASTS .....	9
LED RETRIFIT SOLUTIONS .....	10
LIGHTING MAINTENANCE SERVICES .....	11
PAINTS & ARCHITECTURAL COATINGS .....	12
AUTOMATIC DOORS .....	13
AUTOMATIC DOOR MAINTENANCE .....	14
LOADING DOCK & IN-PLANT EQUIPMENT .....	15
EQUIPMENT RENTAL .....	16
LUXURY VINYL TILE & VINYL TILE COMPOSITION .....	17
POLISHED CONCRETE FLOORING .....	18
CARPET, TILES & MATS .....	19
RESTROOM IN A BOX .....	20
RETAIL FLOORING SERVICES .....	21
CONSTRUCTION TEAM CONTACT INFORMATION .....	22



# Construction

## OVERVIEW

With a combined 40+ years of industry experience, our Construction Team provides programs for your company to meet your construction goals. Through our strategic sourcing process, we evaluate all options and build a program for you to drive the greatest value to your organization. Whether you need paint, flooring, lighting, or roofing, we recommend solutions and deliver savings, ranging from 6% to 45%. Coupled with our industry expertise, we optimize your specifications and ensure results are tailored to your construction needs.



## Value Proposition

Customization is key, and we have an array of sourcing approaches to assure we meet your specific construction needs. Topco members and customers can participate in our aggregated sourcing initiatives, or you can quickly connect to an existing program initiative via the QuickSource program. We utilize both owner and contractor managed programs with an emphasis on ease of use and savings. See inside this brochure for program specifics, and opportunities that may be a fit for your business!

## Construction Programs offering exceptional opportunity:

- Carpeting, Carpet Tiles
- Bar Joist & Decking
- Electric Supplies
- Paints and Coatings
- Lighting Fixtures
- Roofing Membrane
- Equipment Rentals
- Luxury Vinyl Floor
- Fuel Center Canopy / Kiosk Bldg.



# Construction

## HOW WE WORK WITH YOU

### A Customized Approach

When you work with the Topco Indirect Team, you have choices! We've designed our strategic sourcing program to respond to your immediate and future needs for indirect products and services. You may choose one of the five approaches below. Each is designed to give you the greatest opportunity for savings and value.



Let's collaborate on which approach is best for each product or service you wish to procure. The goal is to find the best value for what you need when you need it. Contact us today to discuss your best options! *see last page for contact information*

- **Aggregated Sourcing**
  - Combines the spend of members and customers to build market leverage
  - Builds on aggregation through commonality
  
- **QuickSource / Join Existing Contracts**
  - Rapidly join existing programs
  - Aligns the timing of expiring contracts to increase aggregation
  
- **Member/Customer-Specific Sourcing**
  - Leverages our team's expertise and marketplace insights
  - Offers customized sourcing programs for individual members and customers
  - Timing to align with your significant purchases
  
- **Auctions**
  - Includes For-Resale and Not-For-Resale products & services
  - Reduces price negotiation from months to weeks
  - Delivers significant savings with each customized auction
  
- **Program Development (customized for you)**
  - Allows members and customers to create a preferred partner solution
  - Offers an alternative to aggregated sourcing



# Construction

## Construction Products & Materials

Save valuable budget dollars by sourcing construction material through Topco. Aggregated and negotiated purchasing agreements save across many Construction Divisions.

Our sourcing plan includes:

**Automatic Doors** – Store-entry automatic swinging and sliding doors and their associated installation

**Carpet, Tiles & Mats** – Vestibule, entry tiles and mats including new product installation, pharmacy, produce flooring and office carpets

**Dock Equipment** - Seals, doors, levelers, bumpers and lights for loading docks

**Electric Supplies** – conduit, wire, distribution

**Finished Concrete Flooring** - Diamond grinding, polishing, coloring of concrete floors

**Fuel Center Canopies and Kiosks** - Steel canopies used to shelter fuel dispensing equipment and fuel center kiosks

**Fuel Tanks** - UST FRP petroleum storage tanks, material only

**Generators** - Emergency back-up generator units

**Lamps & Ballasts** – LED, Incandescent, HID, fluorescent and halogen lamps and ballasts

**Light Fixtures** – LED, Incandescent, fluorescent, halogen, HID light fixtures and retrofit upgrade kits

**Luxury Vinyl Flooring** - Luxury vinyl flooring for main aisles, specialty areas and accent floor covering on the sales floor

**Overhead Doors and Security Grills** - Overhead doors and grills for security and asset protection

**Paint & Architectural Coatings** - Paint, coatings, primers, stains and sealers for both interior and exterior buildings.

**Roofing Materials** - Includes membrane, insulation boards, fasteners, and adhesives for new and re-roof projects. Materials only.

**Roofing Replacement/Maintenance** - Services to replace or repair existing membrane roofs with customized service programs. This can be combined with roofing materials.

**Skylights** - Skylights and solar tubes and associated materials

**Steel** - Bar joists and decking

**Vinyl Composition Tile** – VCT commonly used in the main sales area of retail store locations and service areas

**Warehouse Racking** - Structural and roll-formed steel pallet racking for warehouse and distribution applications





# Construction

## Construction Services

Our customers have savings opportunities in most areas of Construction Services spend. Current programs include:

**Automatic Door Maintenance** - Professional maintenance provides repair services, planned maintenance programs, and equipment modernization programs. Technicians inspect, troubleshoot, repair, and modernize all automatic door openings, manual door openings, and safe lock openings, and repair or replace components as specified by the manufacturer.

**Construction Equipment Rental** - Rental equipment including aerial equipment, air compressors and air tools, concrete and compaction equipment, contractor tools, generators, welders, landscaping and material handling equipment etc.

**Energy Conservation Services** - Lighting and energy conservation services

**Generator Service** - Inspection, service, repair, and maintenance plans for commercial-grade industrial generators and equipment. Includes diagnostics, maintenance, custom installations, exhaust systems and warranty repairs. Performed monthly, quarterly, semi-annually or tailored to your application.

**Lighting Maintenance** - Lighting Maintenance, Relamping and special lighting projects. Lighting repairs and service provided on a regular schedule, including preventative maintenance to keep costs in line, maintain desired light levels, and keep your lighting system properly maintained. Upgrades and retrofits performed as requested.

**Parking Lot Paving, Seal Coating \* Striping** - Parking lot paving, striping, saw cut and patching services and sealing



# Construction

## Roofing Materials

### Overview

The Topco Indirect Construction Team has partnered with Johns Manville, Carlisle SynTec, GAF Materials Corp, and Genflex to provide our members and customers with the best options for their roofing materials. We work together with the manufacturers to ensure they meet the specific requirements of each individual building. With Topco's discounted pricing, members and customers save an average of 20% on their roofing projects.



### Benefits

- **National coverage with local service**
- **Total roofing systems to meet a variety of building needs**
- **Responsive and dependable customer service**
- **Specifier and consultant services**
- **Tapered design assistance**
- **Roofing systems targeted to supermarket, food retail, and distribution**





# Construction

## Roofing Labor

### Overview

The Topco Indirect Construction Team has partnered with Tecta America and DDP Roofing Services to provide members and customers with the best roofing labor options. They will work with approved manufacturers to ensure the specific requirements of each individual building is matched. With Topco's discounted material pricing, members and customers save an average of 10% on their roofing projects. By establishing a strong installation program tied with the manufacturer, you will always have a roof program tailored to your needs.



### Benefits

- **National coverage with local service**
- **Total roofing systems to meet a variety of building needs**
- **Responsive and dependable customer service**
- **Specifier and consultant services**
- **Roofing systems targeted to supermarket, food retail, and distribution**





# Construction

## Lamps & Ballasts

### Overview

Whether you need LED, incandescent, fluorescent HID, or halogen lamps and ballasts — Topco Indirect has the solution for you. Our suppliers manufacture a variety of product lines to cover the products you need. We are constantly auditing and evaluating our suppliers to ensure ongoing price competitiveness.

Topco works with some of the most respected suppliers in the lighting industry including GE Lighting, Ledvance, Philips Lighting and Sylvania. You can quickly and easily join the **Lamps and Ballasts** program through QuickSource, which offers negotiated savings you gain from day one.

### Benefits

- **Most competitive national pricing - average savings of 22%**
- **Extensive geographic coverage**
- **Exceptional service for Topco Members, considered one of the largest customer groups for lighting products in the industry**
- **Topco Indirect Team - Lighting Project Experts**
- **Industry leading warranty programs - customized based on volumes**





# Construction

## LED Retrofit Solutions

### Overview

Topco Indirect has LED retrofit solutions to meet your lighting needs. Our suppliers manufacture a variety of product lines to ensure we have what you need. We also can provide LED retrofit labor to install and maintain your lighting. We constantly audit and evaluate our suppliers to ensure ongoing price competitiveness.

Topco works with some of the most respect suppliers in the lighting industry, including FSC Lighting, Groom Energy, and LSI Industries. It is simple and easy to join the **LED Retrofit Program** through Quicksourc, which offers negotiated savings you gain from day one.

### Benefits

- **Most competitive national pricing - average savings of 15%**
- **Extensive geographic coverage**
- **Exceptional service for Topco Members, considered one of the largest customer groups for lighting products in the industry**
- **Topco Indirect Team - Lighting Project Experts**
- **Industry leading warranty programs - customized based on volumes**





# Construction

## Lighting Maintenance Services

### Overview

The Construction Team offers you an opportunity to save money on your lighting maintenance services. This program includes lighting repair, relamps and retrofits, special lighting projects, and preventative maintenance to keep costs in line, maintain desired light levels, and keep your lighting system properly maintained. Join the program to gain Topco discounts and save up to 12%, depending on your current contract.



### Benefits

- **Turn Key Project Solutions**
- **Distributor Direct Product Pricing Solutions**
- **Manufacturer Neutral/Best Solution Approach**
- **Comprehensive Funding Options**
- **Custom Maintenance Programs**
- **Energy Efficient Lighting Retrofit & Relamping**
- **ECM Motor Retrofits**
- **Sign Maintenance Programs**



# Construction

## Paints & Architectural Coatings

### Overview

Join this NATIONAL ACCOUNTS PROGRAM with a trusted supplier of paints and coatings to enjoy customized products, services, and Topco discounts.



**SHERWIN-WILLIAMS®**



Sherwin-Williams offers Topco discounts to you when you join the program, for finish coats and primers for both interior and exterior projects, high performance enamels, dryfall ceiling paint, specialty products like masonry block fill, Bullseye 123 Stain Killer ... and more!

Sherwin-Williams Paints are among the most sought-after and specified coatings available in the marketplace. With SpecWizard, SpecAgent and GreenWizard tools, you can feel confident that your LEEDS and UL requirements are satisfied. For more information, please visit [sherwin-williams.com](http://sherwin-williams.com).

### Benefits

- **Topco discounts**...as much as 50% savings, depending on your current contract or rates
- **Competitive national pricing** no matter where your project is located
- **Easy ordering**...you or your contractor can place orders - just let us know your preference
- **Skip the Big Box store**...buy direct from the manufacturer with no long lines at checkout
- **Over 3,500 locations across the U.S.**...for your last-minute convenience
- **People-friendly coatings**...odor free choices suitable for occupied spaces
- **Accurate color matching**...product advice from professionally trained and focused staff
- **Outstanding on-line support**...color selection tools to ensure a perfect match
- **Archived order history**...your orders are saved for 10 years - just in case you need more!
- **Customized reporting**...your orders are tracked and reported quarterly





# Construction

## Automatic Doors

### Overview

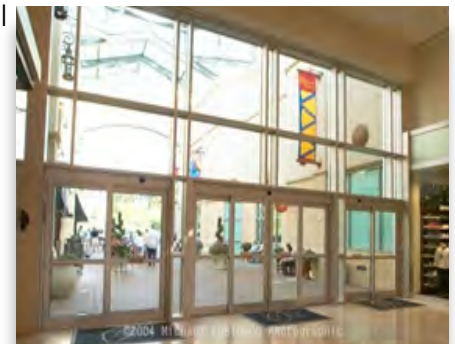
Topco offers members an opportunity to join the Construction QuickSource initiative with a Topco preferred supplier.

The Construction Team has established a full line of Automatic Doors program that covers all applications in the retail/grocery industry. Our suppliers provide swing, slide, and folding door systems that incorporate the latest in automation technology. Whether your project is a renovation upgrade, new construction, national account, or one of a kind, a Topco preferred supplier will provide you with an automatic door system for years of dependable service.



### Benefits

- **Topco discounts – delivers an average savings of 20%**
- **Single national account point of contact**
- **Turn-key project solutions**
- **Competitive pricing**
- **U.S. manufactured products**
- **Owner supplied - direct purchase program**
- **Orders tracked and reported quarterly**





# Construction

## Automatic Door Maintenance

### Overview

The Construction team offers an opportunity to save money on your automatic door maintenance services. This program includes repair and preventative maintenance to control costs and keep your system properly maintained. Our suppliers that are located across the U.S. and are equipped to create a customized program tailored to fit your needs and specifications. Our suppliers are trained to identify and repair every component in every door system. When you join the program, you'll gain Topco discounts and save up to 10%.



### Benefits

- **Topco discounts and savings**
- **Provide guidance for best practices and scope of work development**
- **Implementation assistance to ensure smooth transitions**
- **Turn-Key Project Solutions**
- **Distributor Direct Product Pricing Solutions**



# Construction

## Loading Dock & In-Plant Equipment

### Overview

Rite-Hite offers Topco discounts when you join the program. You will have access to loading dock equipment, industrial doors, safety barriers, HVLS fans, industrial curtain walls, and more. Count on Rite-Hite to provide system-based solutions in the following areas: Loading Dock Safety, Security and Productivity, In-Plant Safety, Environmental Separation and Control, and Energy Savings.

Rite-Hite's longstanding reputation for safety, quality and innovation continues to expand through the constant introduction of unique new products. Examples include the SAFE-T-LIP® hydraulic dock leveler; the Global Wheel-Lok™ wheel restraint; the FasTrax high-speed door and the Eclipse™ loading dock shelter. For more information, please visit [www.RiteHite.com](http://www.RiteHite.com).



### Benefits

- **Free Loading Dock Safety Assessments**
- **Free Facility Energy Audits**
- **Free Dock Design Planning Assistance**
- **Contractors or Members purchase from distribution network**
- **Orders Tracked and Reported monthly**



# Construction

## Equipment Rental

### Overview

As a Topco Indirect member or customer, you have access to competitive pricing and service from our preferred rental partner, United Rentals.

United Rentals is the premier equipment rental company nationwide, delivering unmatched service and value. They meet the demand of industrial, commercial, and construction rental projects.

Join the program to get the BEST people, equipment, and solutions...delivered nationwide to your location.



### Benefits

- **\$8.6 Billion Fleet**
- **880 Branch Locations**
- **Faster response times**
- **Less down time**
- **One Stop Solutions**
- **Convenience locally from a national company**
- **Scalability to meet your future growth**



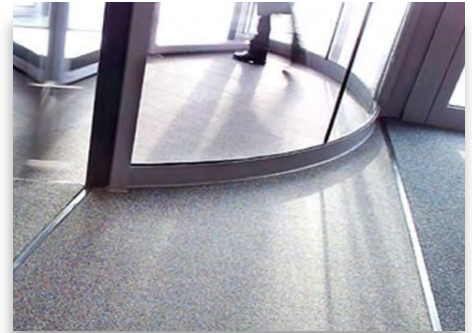


# Construction

## Luxury Vinyl Tile and Vinyl Tile Composition

### Overview

The Topco Indirect Construction Team offers our members and customers creative flooring solutions at every stage of the floor covering project. The program includes solutions for entrances, anti-fatigue, logo matting, pharmacy flooring, and more. Topco has partnered with industry leaders **Mannington** and **Armstrong** to ensure you receive quality products at the best prices.



### Benefits

Our suppliers offer complete installation services and material quotations to retailers nationwide. Personal service is yours from knowledgeable staff. Engage your supplier early in your flooring project planning to save time and money. Enjoy these benefits:

- **Aggressive national pricing structure**
- **Comprehensive flooring needs assessment**
- **Project Management Support**
- **Extended Warranties**
- **A Turn Key Matting and Entrance Management Program**
- **Complete maintenance program**
- **Full service, nationwide**



# Construction

## Polished Concrete Flooring

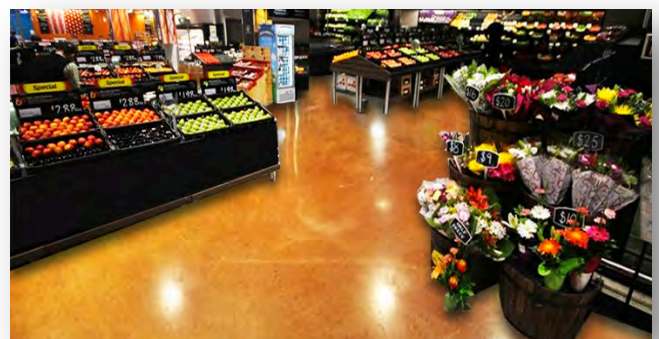
### Overview

We invite you to join our Polished Concrete Flooring Program. Topco has qualified the leading industry suppliers for this popular program. Whichever supplier you chose, you will be assigned a single national account point-of-contact to assist with your needs. Our Topco preferred suppliers offer consistency in specification application – guaranteeing your satisfaction with the final product. When you join the program, you'll gain Topco discounts and save up to 20%.



### Benefits

- **Topco discounts and competitive pricing**
- **Eliminate GC mark-up**
- **Single national account point of contact**
- **A wide selection of products**
- **Exposure to multiple vendors**
- **Professional installation services**
- **Industry leading warranty programs**
- **Orders tracked and reported monthly**





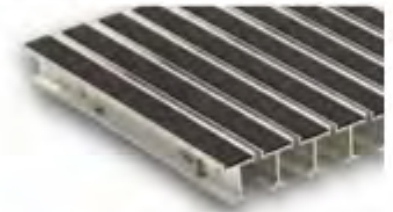
# Construction

## Carpets, Tiles & Mats

### Overview

We invite you to join this National Accounts Program for discounts and custom service on entrance systems, pharmacy flooring, produces mats, carpet tiles, and floor matting. Topco has qualified top tier suppliers for this popular program.

Topco National Accounts suppliers offer a full line of Carpet and Floor Matting choices, covering all store entrance and in-store applications for the retail grocery industry, and other food related businesses. A sample list of products includes Carpet Tiles & Rolls, Entrance Grid Systems, Entrance Mats, Anti-Fatigue Mats & Carpet Tiles, Kitchen Mats.



### Benefits

- **Topco discounts and competitive pricing**
- **A wide selection of products**
- **Professional installation services**
- **Industry leading warranty programs**
- **Orders tracked and reported monthly**



# Construction

## Restroom Fixtures and Partitions

### Overview

To assist members in fully meeting their specifications for all aspects of restroom build outs, we have recently contracted with two preferred suppliers: HJC / Haines, Jones & Cadbury ([hjcin.com](http://hjcin.com)) and Newton Distributing Company ([newtondistributing.com](http://newtondistributing.com)). Both suppliers provide full restroom "kits" for new and remodeled restrooms as well as partitions, hand driers, and plumbing parts. The program allows you to consolidate all restroom parts into a turnkey package with delivery control, full inventory, and cost visibility. You will know your upfront costs - with no General Contractor (GC) mark-up on direct purchases or if the GC is procuring through HJC or Newton, you will have insight on the cost prior to mark-up.



NEWTON  
DISTRIBUTING COMPANY

### Program

- Restroom accessories
- Pricing based on your specifications
- National account discounts
- Program works direct or through your GC
- Choose a full restroom or just a faucet – just what you need
- Rollout programs for new or remodeled locations
- Consultation to meet your specifications, needs, and budget

### Benefits

- Extensive inventory including fixtures and accessories from the major manufacturers
- Same day shipping on stock orders placed before 2:00 pm EST
- Warranty assistance on all products







# Construction

## Retail Flooring Services

### Overview

To assist members with new builds or remodels, the Topco Construction team has chosen National Retail Flooring Services company to work with our members and customers. National facilitates the installation of a wide variety of commercial flooring products. Visit [nrfsinc.com](http://nrfsinc.com) for more information. In business for 45 years, National brings an unequalled level of expertise to each new job. National is the number one supplier for many Fortune 500 companies in North America.



### Flooring Choices

- Luxury Vinyl Tile (LVT)
- Vinyl Composition Tile (VCT)
- Carpet / Exterior, Entryway, Interior
- Ceramic Tile
- Wood / Real and Laminate
- Concrete



### Services

- Concrete floor grinding, preparation, and coatings
- Cove base transition installation
- Moisture testing
- Material specifying and procurement / free warehouse storage
- Large demo jobs with ride machine / Free job walks
- Fixture moving
- On call 24/7...speak to a knowledgeable technician



# Construction

## Construction Team Contact Information

We look forward to discussing your savings and other business opportunities. Please contact any member of our team.



**Adam Binder, CPSM**  
Category Director  
[abinder@topco.com](mailto:abinder@topco.com)



**Bryan Hines, CPSM**  
Senior Category Manager  
[bhines@topco.com](mailto:bhines@topco.com)



**Jim Harte, LEED, AP, CPSM**  
Category Manager  
[jharte@topco.com](mailto:jharte@topco.com)



**Maighdy Scroggins**  
Category Coordinator



**Julie McGettrick**  
Category Coordinator