



EPIC
The Irish Emigration Museum

A spectacular venue,
steeped in history



EPIC The Irish
Emigration
Museum

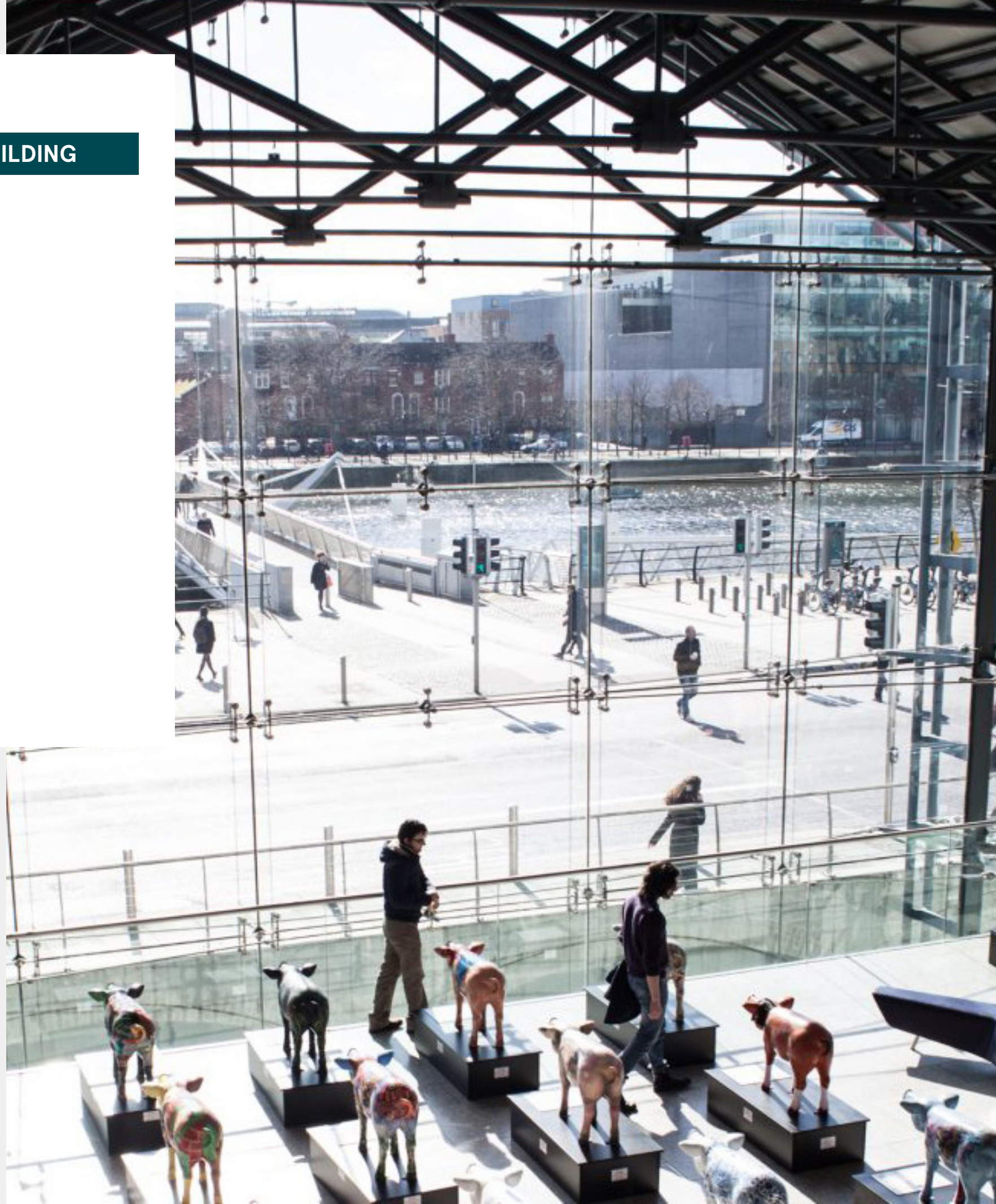


Take your guests on a unique journey through Ireland's history and culture

In the heart of Dublin's Docklands, The Chq Building overlooks the river Liffey, where merchants once unloaded their cargo and from where so many Irish emigrants embarked on their journey to a new life. This listed former warehouse is a dream for event planners.

Discover our one-of-a-kind, awe-inspiring spaces that serve as the ideal location for your exhibition, corporate event or launch party for up to 800 guests.

→ THE CHQ BUILDING



The chq Building

An iconic building, CHQ is one of the finest pieces of 19th century architecture in Ireland. The scene is set with a remarkable modern glass façade overlooking the river, designed by the renowned Irish engineer Peter Rice.



The Crimean Banquet, The chq Building, 1856

“What a brilliant venue to host an event! It is a wonderful museum and a brilliant conversation starter – all of our guests were very impressed. Plus, the staff are excellent to deal with – very accommodating, helpful and hands on throughout the entire process. Cannot recommend enough!”

– Sarah Kennedy, Garland

→ The Galleria



The Galleria

The Galleria is a versatile space with capacity for up to 500 guests. It is ideal for networking events, presentations, festivals and product launches.

Hire of the Galleria includes the use of a secured area for storage and event preparation.

Area: **445 sq metres**

Ceiling height: **Min 6 metres - max 9.9 metres**

Cocktail reception: **500 guests**

Theatre style: **200 guests**

Storage space area available: **100 sq metres**

Ceiling height: **3 metres**



→ The Liffey Corner



The Liffey Corner

A private space offering visibility to the hustle and bustle of CHQ, The Liffey Corner is suited to intimate events of up to 100 guests. With a glass wall on two sides facing the mall with natural daylight, this space gives great flexibility for showcases and can be used as standalone or in conjunction with other CHQ building spaces to increase overall capacity.

Area: **215 sq metres**

Ceiling height: **3 metres**

Cocktail reception: **100 guests**

Theatre style: **70 guests**



→ The Mall

The Mall

The Mall of the CHQ runs the entire length of this impressive building and the whole south end can be used for events, offering a unique opportunity to host the most original evenings. With smart ways of making the space your own, nowhere in Dublin offers this potential for vast space and height in an industrial structure.

Area: **500 sq metres**

Ceiling height: **6 metres – max 9 metres**

Cocktail reception: **500 guests**



→ The Annie Moore Room



The Annie Moore Room

The Annie Moore Room, named after one of Ireland's famous emigrants and featured in the vaults of EPIC, is a fully equipped meeting room located across the mall from the Galleria. The space offers natural daylight and is perfect for meetings of up to 48 guests with built in screen, overhead LCD projector and speakers.

Area: **68 sq metres**

Ceiling height: **3 metres**

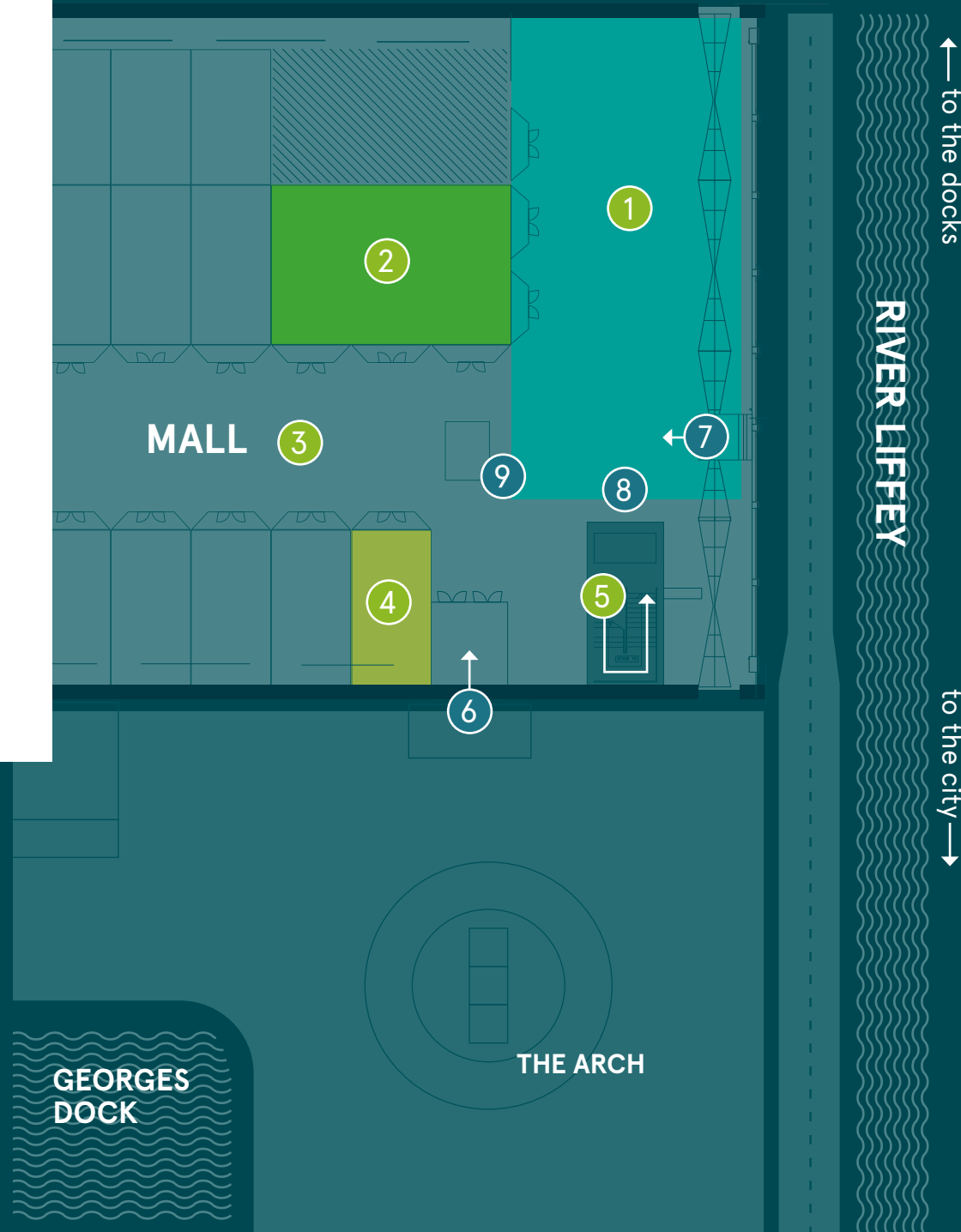
Cocktail reception: **50 guests**

Theatre style: **48 guests**

The chq Building

Floor Plans & Specifications

→ CHQ FLOOR PLANS & SPECIFICATIONS



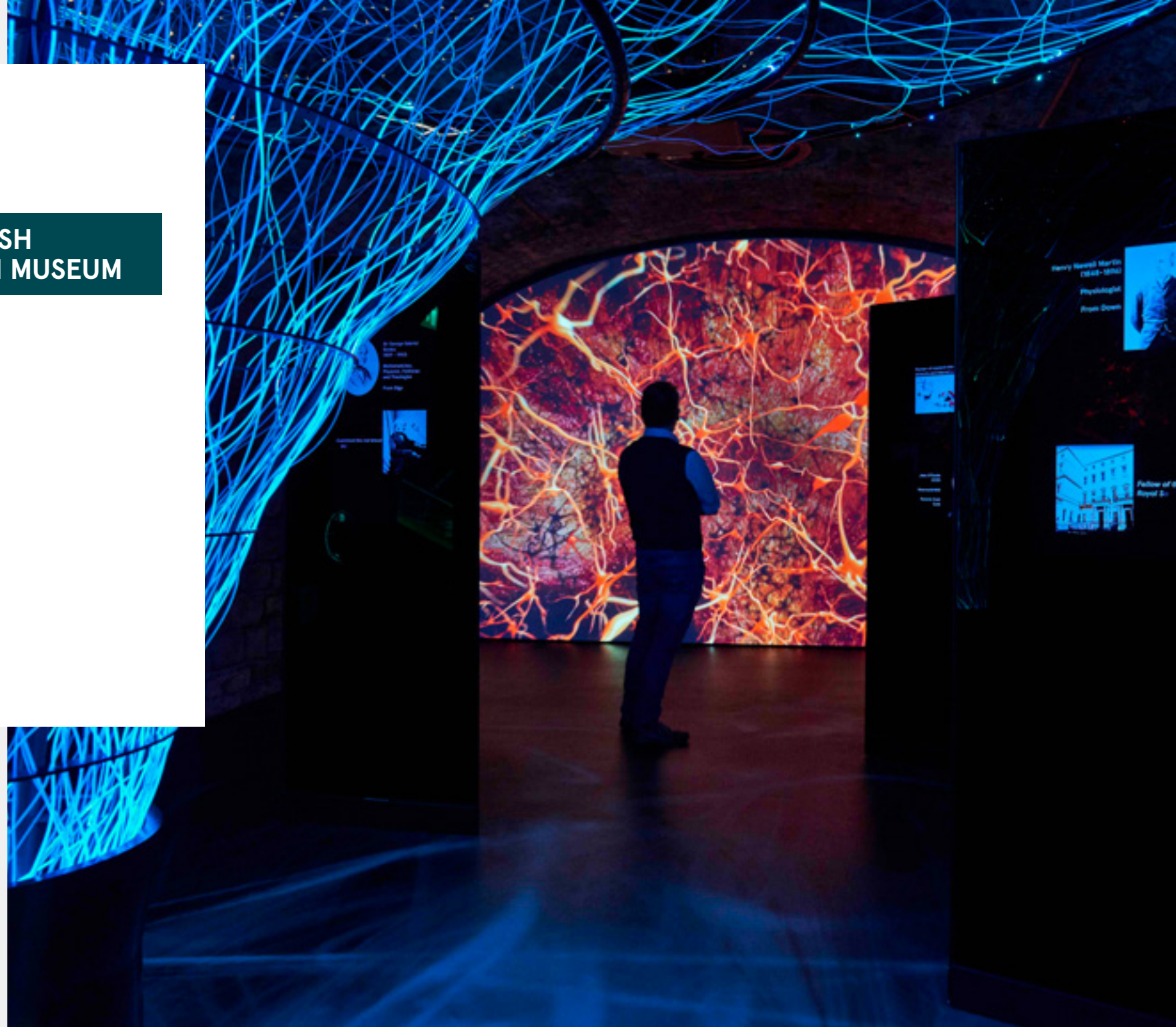
ROOM	LEVEL	AREA sq m	CEILING HEIGHT (metres)	COCKTAIL RECEPTION	THEATRE STYLE
The chq Building					
1 The Galleria	Ground	445	Min 6m Max 9.9m	500	200
2 The Liffey Corner	Ground	215	3m	100	70
3 The Mall - South end	Ground	500	Min 6m Max 9.9m	500	n/a
4 The Annie Moore Room	Ground	68	3m	50	48
EPIC The Irish Emigration Museum					
5 Events Galleries	Vaults	561	3m	180	100
6 Group Entrance				8 Registration Desk	
7 Single Entrance				9 VIP Desk	

→ EPIC THE IRISH EMIGRATION MUSEUM

EPIC

The Irish Emigration Museum

EPIC The Irish Emigration Museum is an interactive journey about how a small island made a big impact on the world. To truly understand what it means to be Irish, you need to discover how Ireland has influenced the world. The museum's high-tech, fully interactive exhibitions makes the EPIC experience an accessible, fun and educational way for visitors to learn about Irish history, culture and people. Our event spaces provide an impressive and memorable backdrop for your event.



"Our Foreign Minister was very impressed with EPIC, its design and the story it told. All the connections with Australia gave it a real relevance. The fabulous researchers were even able to find part of her family history, which added a real personal touch."

— Simon Mamouny,
First Secretary and Deputy Head of Mission,
The Australian Embassy.

→ Event Galleries



Event Galleries

Put culture on the agenda at your next breakfast briefing, cocktail reception or networking session. Our Event Galleries, located within the vaults of The chq Building, offer unique spaces to impress your guests, with world class exhibits and a truly interactive and immersive experience.

Area: **561 sq metres**


Ceiling height: **3 metres**

Cocktail reception: **180 guests**

Theatre style: **100 guests**



Floor Plans & Specifications

→  EPIC FLOOR PLANS
& SPECIFICATIONS

ROOM	LEVEL	AREA sq m	CEILING HEIGHT (metres)	COCKTAIL RECEPTION	THEATRE STYLE
EPIC The Irish Emigration Museum					
5 Event Galleries	Vaults	561	3m	180	100



→ CATERING



Catering

Our event catering partners include Bakehouse, Mitchell & Son, ELY Bar & Grill and Urban Brewing. Select from a range of canapés ranging from rustic Irish cuisine to more refined bites, all paired with the best wines. All our partners will work closely with you to ensure your food and beverage offering compliments your event. Both ELY Bar & Grill and Urban Brewing, located within The chq Building are perfect for restaurant style dining and drinks post event at EPIC & CHQ.



“Our Foreign Minister was very impressed with EPIC, its design and the story it told. All the connections with Australia gave it a real relevance. The fabulous researchers were even able to find part of her family history, which added a real personal touch.”

— *Simon Mamouny,*
First Secretary and Deputy Head of Mission,
The Australian Embassy.

→ Partners



Partners

Urban Brewing and Stack A Restaurant is situated within the vaults of The chq Building, and includes a microbrewery, two outdoor terrace, with capacity for 375 seated guests.

ELY Bar & Grill, also located in the historic vaults, showcases a stunning and unique backdrop, perfect for any event catering for up to 200 guests.

Bakehouse offers a special combination of Irish warmth and friendliness along with the very best quality homemade foods, baked goods and carefully chosen beverages to match your selected menus.

Mitchell & Son is Ireland's oldest Wine and Spirit merchant offering a huge selection of wines along with whiskey and gin tastings to complement any event.



→ Entertainment

Entertainment

Captivate your group with some unforgettable Irish entertainment. We've got a rich repertoire to draw from such as storytelling, traditional music and Irish dancing. With the backdrop of the vaults as well as inspiring galleries, we will make your event truly memorable.



"EPIC was the perfect venue for our social event. It provided an outstanding, memorable and unique experience for our guests. The interactive elements were a great talking point and the educational elements were an excellent welcome to the city. I also can't speak highly enough of the team. From the initial meeting through to the event itself the team were able to tailor plans specifically for us which helped deliver a great evening. Thank you."

— Matt Davenport, MCI Project Director,
Social Program of 2019 International
Headache Society Congress

Event Options

The CHQ Building and EPIC offer many different spaces for your event. We're looking forward to working together to show how we can accommodate and impress your guests in our venue. Your satisfaction is important to us so we want to see how to help.

→ EVENT OPTIONS

The chq Building

The Galleria, The Liffey Corner and The Annie Moore Room are available as standalone spaces through the daytime and evening to ensure that you impress your guests. The Mall is such a special space that we can only share in the evening!

EPIC The Irish Emigration Museum

EPIC can be used for exclusive use for morning or evening events in conjunction with The chq Building spaces or as a more intimate offering for your guests in complete exclusivity.

EXCLUSIVE USE OF EPIC OUTSIDE OPENING HOURS

MORNING EVENTS

(7.00am-10.00am)

Exclusive use of the entire museum, including the exhibition, with space in the galleries for breakfast.

RECEPTION & EVENING EVENTS

(available from 6.00pm)

Exclusive use of the entire museum, including the exhibition, with space in the galleries for catering and refreshments.

Every event includes a tailored guided tour of EPIC.

EVENTS DURING OPENING HOURS

We are delighted to welcome groups to EPIC during opening hours for tailored tours. A good combination includes a welcome drink, museum tour, followed by a visit to Urban Brewing or ELY Bar & Grill for refreshments.



→ CASE STUDIES



Case Studies

These unique spaces are ideal for a variety of use - from large corporate events and product launches, to exhibitions, networking evenings or breakfast briefings. We've welcomed several companies and partners to EPIC and The chq Building over the years and loved seeing the space transform. Take a look through some of our case studies and see what's possible.



→ Wales Week



Wales Week

A week of workshops, networking & evening receptions.

Number of attendees: **650** over the week-long showcase

Spaces used: **The Galleria, The Liffey Corner, Event galleries**



The chq Building was the selected venue to celebrate the first ever Wales Week in Ireland, as the space offered a unique backdrop for their “Welsh Dome” overlooking the River Liffey. It also gave the attendees the opportunity to celebrate a week-long festival celebrating the unique cultural relationship between Ireland and Wales.

Many of the events took place inside a specially created 360° immersive tech dome, located in The Galleria space. This structure was 10 x 10 x 4 meters and over 1400kg.

One of the highlights of the week was an evening celebration which included a welcome reception in the 360° tech dome, followed by a tour of EPIC and a drinks and canapé reception in the event galleries of the museum.

→ Aer Lingus



Aer Lingus

Launch of new crew uniforms

Number of attendees: 250

Spaces used: **The Galleria** and **The Liffey Corner**



Aer Lingus chose The chq Building to reveal to the industry their new uniforms.

Like the building itself, the collection was compared to a “modern capsule collection” designed by Louise Kennedy.

The Galleria area was the setting of an original catwalk, built inside a spectacular plane fuselage, while The Liffey Corner was the perfect place to lounge, network over breakfast and host media interviews.

Event designed and produced by Verve The Live Agency.

→ AIB



AIB

AIB The Livin Dublin Summit

Number of attendees: 200

Spaces used: **The Galleria** and **The Liffey Corner**



Using The chq Building as a single venue, this event created so many different atmospheres for the AIB Livin Dublin Summit.

A large stage was built in The Galleria for presentations with a panel discussion. The flexibility of the space also allowed for one-on-one seated consultations.

The Liffey Corner was transformed into a lounge area for more casual style one-to-one meetings.

Event designed and produced by Verve The Live Agency.

The Irish Times

The Martyn Turner exhibition

Spaces used: **The Liffey Corner**

Number of attendees: **150**

→ The Irish Times



The Irish Times selected The Liffey Corner to display an exhibition of the work of the contemporary satirist - Martyn Turner, an event within the 2018 Jonathan Swift Festival.

The open space provided the perfect setting to showcase the many cartoons created by Turner for The Irish Times over the past five decades. The invitation-only exhibition launch included a drink and canapé reception.

Sky Ireland

Sky Ireland launched their latest campaign.

Spaces used: **EPIC Event Galleries**

Number of attendees: **100**

→ Sky Ireland



Sky Ireland chose the EPIC Event Galleries to launch their latest marketing campaign.

The Celebrations gallery was the perfect setting for an early morning briefing, where colourful contemporary chairs were used to contrast against the natural backdrop of the stone vaults. Following the briefing, guests enjoyed a delicious breakfast and networked in the Storytelling gallery.

Photos credit: Sky plc.

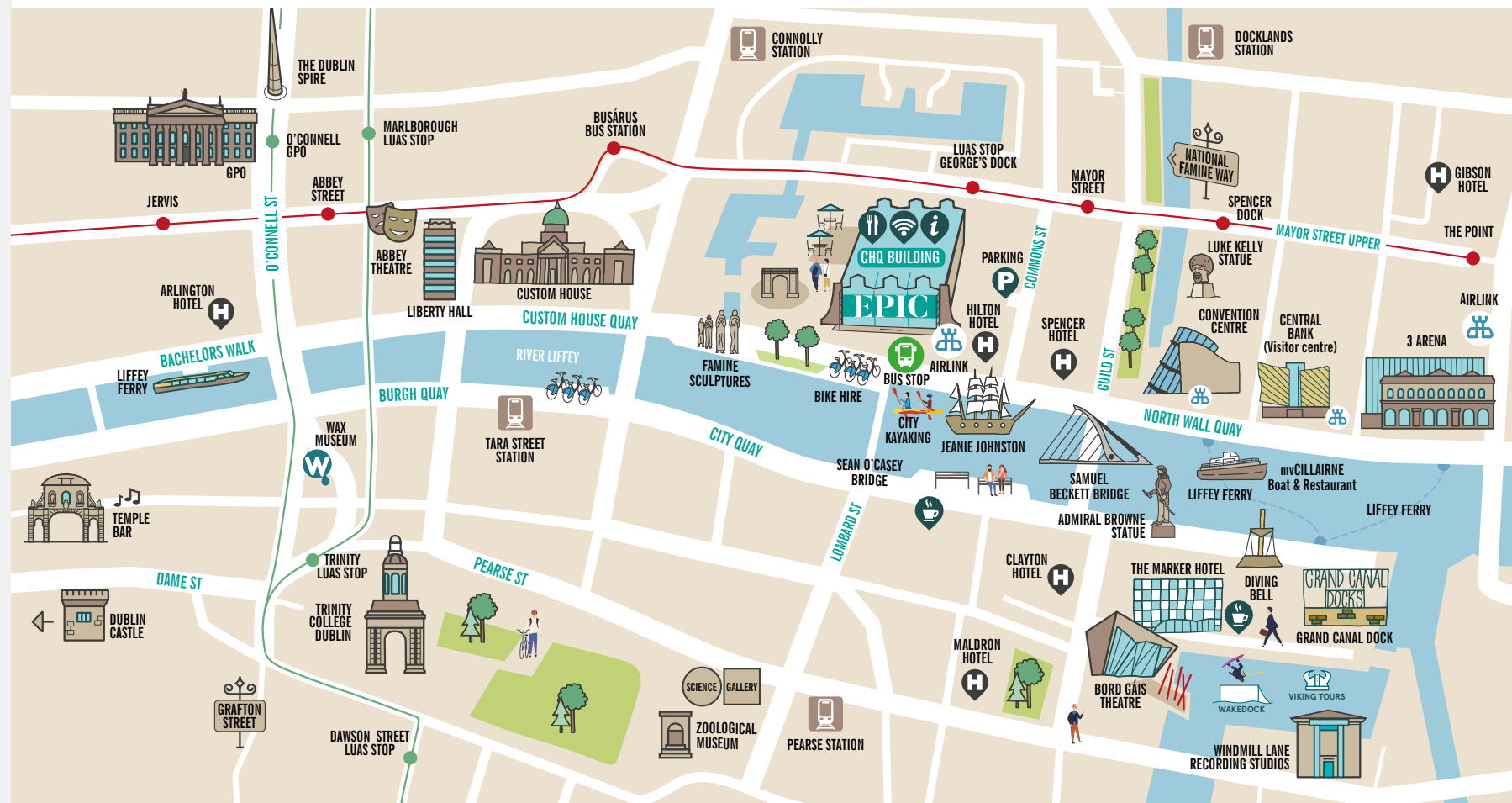


→ CONTACT



Location: CHQ, Custom House Quay, Dublin 1

Distance from Dublin Airport: 15 minutes via Dublin Tunnel to the Docklands



Contact

Making an event your own is all about the detail, starting with the perfect space. Here's where the fun starts – we look forward to hearing from you.

Email: events@epicchq.com

Phone: +353 1 906 0861



Tania Costa
Events Sales Executive



David Cleary
Head of Sales



“ I can guarantee that we will be recommending a visit to your world class facilities by staff at the Embassy and visiting delegations.”

– Peter Glennon,
Political Specialist U.S. Embassy Dublin