

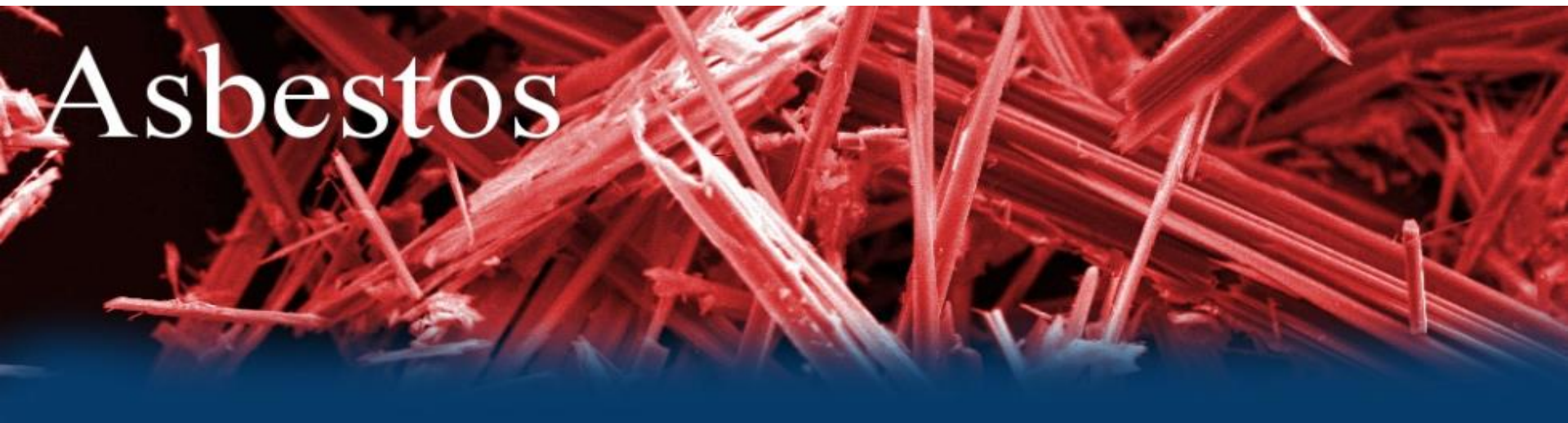


HSE New Zealand  
Health Safety Environment

**asbestos**  
environmental consultants



# Introduction to Managing Asbestos in NZ



Mr Ritchie Bower AFOH MIIRSM



HSE New Zealand  
Health Safety Environment

**asbestos**  
environmental consultants



## ■ Introduction

### ■ The next 30 minutes you will learn about:

- What is Asbestos
- Where you may find it
- Key Legislation
- Health Effects
- Asbestos Removal
- Projects our consultants have been involved in
- What services we provide



HSE New Zealand  
Health Safety Environment

**asbestos**  
environmental consultants



# What is Asbestos?







HSE New Zealand  
Health Safety Environment

**asbestos**  
environmental consultants



## Properties of Asbestos

Asbestos has a host of physical properties that make it almost a superstar in the world of industrial chemistry. Its tensile strength surpasses that of steel. It has tremendous thermal stability, thermal and electrical resistance and is non-flammable. It can be subdivided into fine fibers that are strong enough and flexible enough to be spun into material that is a flame retardant, chemically inert thermal and electrical insulator.





HSE New Zealand  
Health Safety Environment

**asbestos**  
environmental consultants



## Types of Asbestos

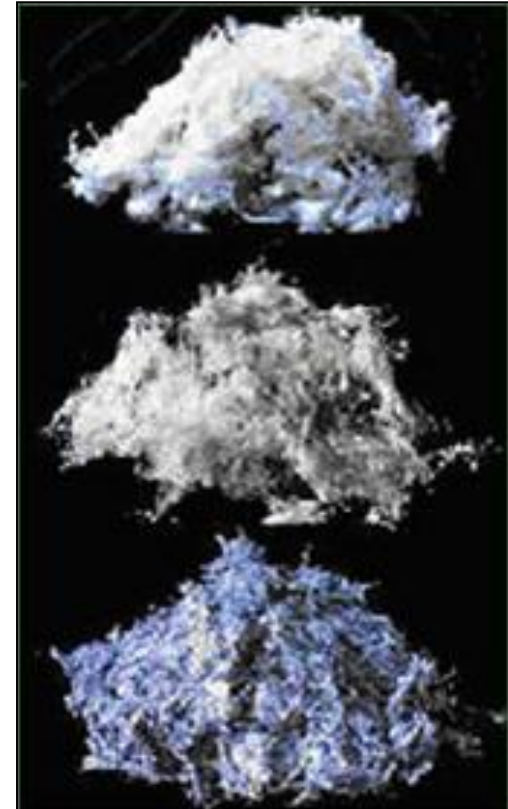
There are three main types of asbestos that were used in production and still exist in materials today:

Chrysotile (white asbestos)

Amosite (brown asbestos)

Crocidolite (blue asbestos)

There are three other types of asbestos these types were not mined commercially and are generally only found as trace contaminants in materials



## Non-friable:

Vast majority of asbestos materials are non-friable. If these products are broken and the edges are exposed, there is still a low risk of inhaling these fibres as the bulk of the fibres will remain bound.



## Friable:

Can be easily crushed or pulverised under hand pressure to release fibres.

Products and materials that are considered friable in their normal state include lagging, insulation and blankets (Textiles).







HSE New Zealand  
Health Safety Environment

**asbestos**  
environmental consultants



## Examples – Friable (fibres easily liberated)





HSE New Zealand  
Health Safety Environment

**asbestos**  
environmental consultants



## Examples - Friable





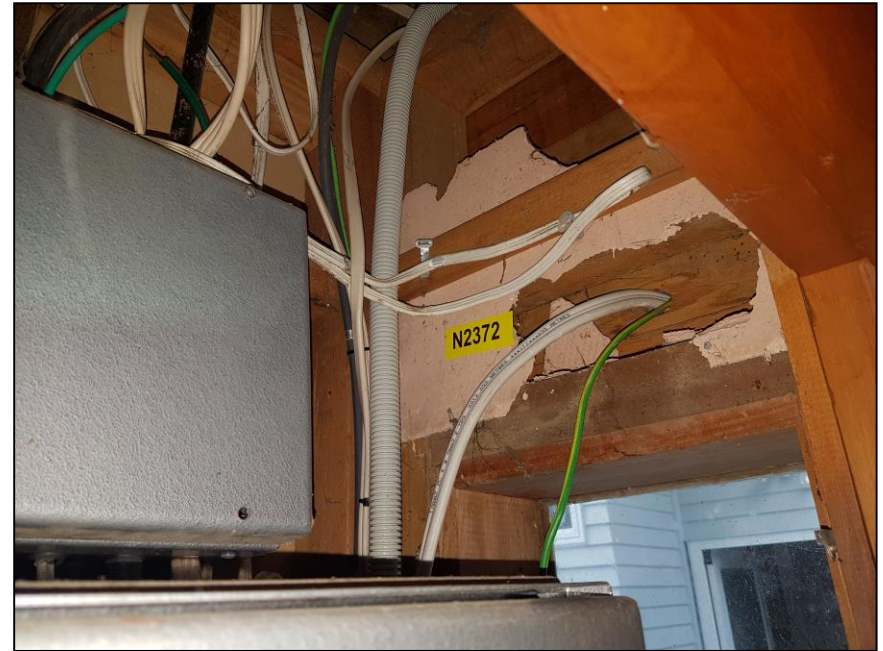


HSE New Zealand  
Health Safety Environment

**asbestos**  
environmental consultants



## Examples – Non Friable (fibres tightly bound)





HSE New Zealand  
Health Safety Environment

## Examples – Non Friable





## **Reg 10 Asbestos identified at the workplace**

A PCBU (person conducting a business or undertaking) with management or control of a workplace who knows or ought reasonably to know that there is a risk of exposure to respirable asbestos fibres in the workplace must ensure, so far as is reasonably practicable, that all asbestos or ACM (Asbestos Containing Material) giving rise to the risk at the workplace is identified and assessed

## **Reg 13 Prepare asbestos management plan**

This regulation applies if asbestos or ACM is:

- (a) identified at a workplace under [regulation 10](#); or
- (b) likely to be present at a workplace from time to time.

A PCBU with management or control of the workplace must ensure that a written plan (an **asbestos management plan**) for the workplace is prepared.

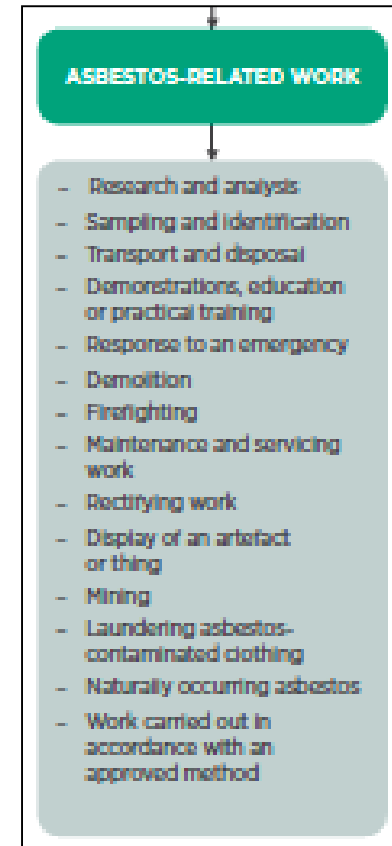




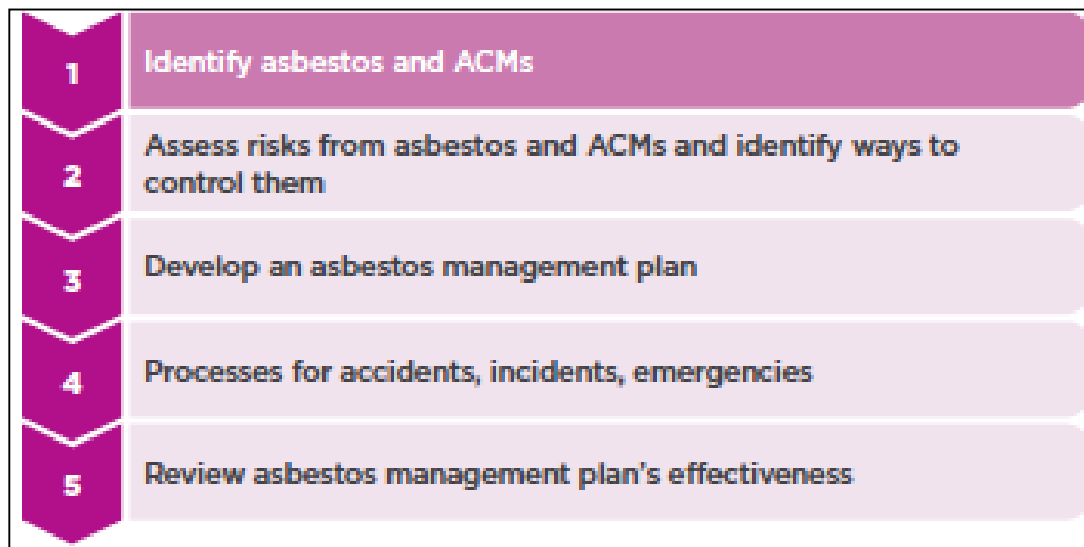
## Reg 17 Duty to train workers about asbestos

A PCBU must ensure that workers who are engaged by the PCBU and who the PCBU reasonably believes may be involved in asbestos removal work or in the carrying out of

***asbestos-related work*** are trained in the identification and safe handling of, and suitable control measures for, asbestos and ACM.

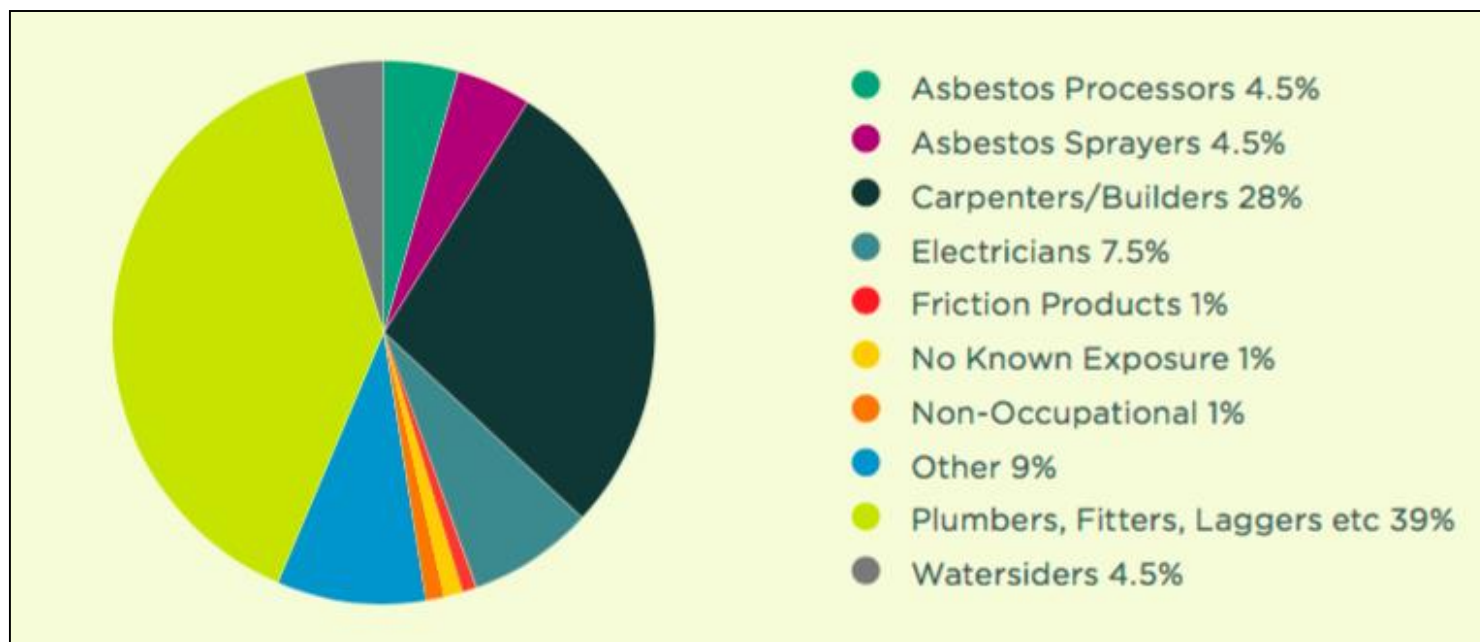


# Asbestos Management Plan Process



\*WorkSafe ACoP for the Management and Removal of Asbestos

## Why does NZ require this legislation?



\*Asbestos related deaths by trade (WorkSafe 2013)



## What are the known health effects?

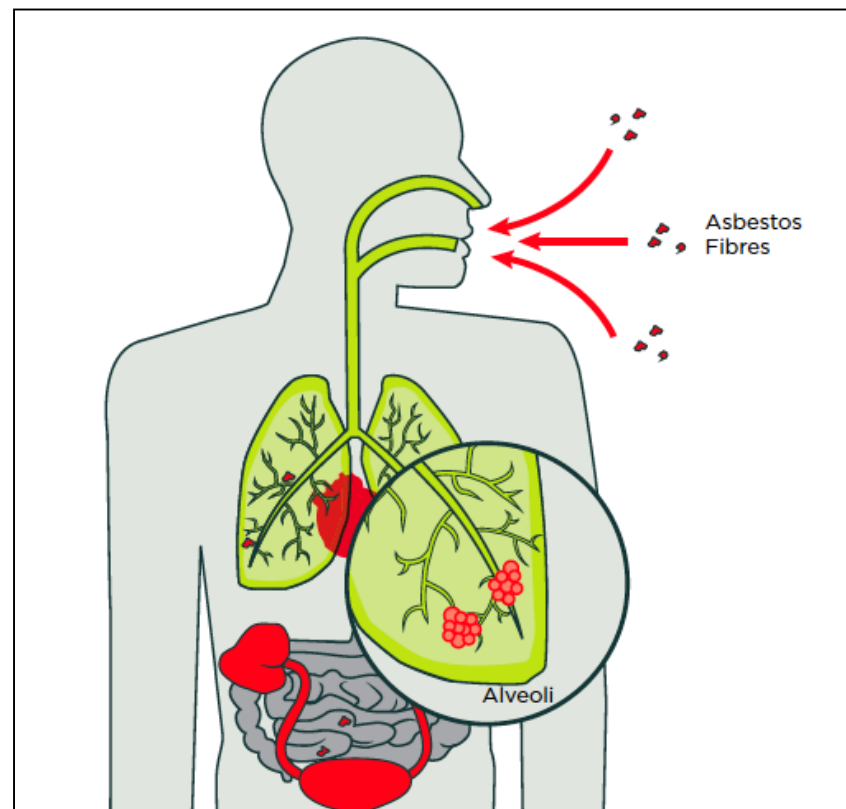
Asbestos is a known carcinogen.

The inhalation of asbestos fibres is known to cause:

- mesothelioma;
- lung cancer;
- asbestosis;
- other respiratory diseases.

Asbestos poses a risk to health by inhalation whenever asbestos fibres become airborne and people are exposed to these fibres.

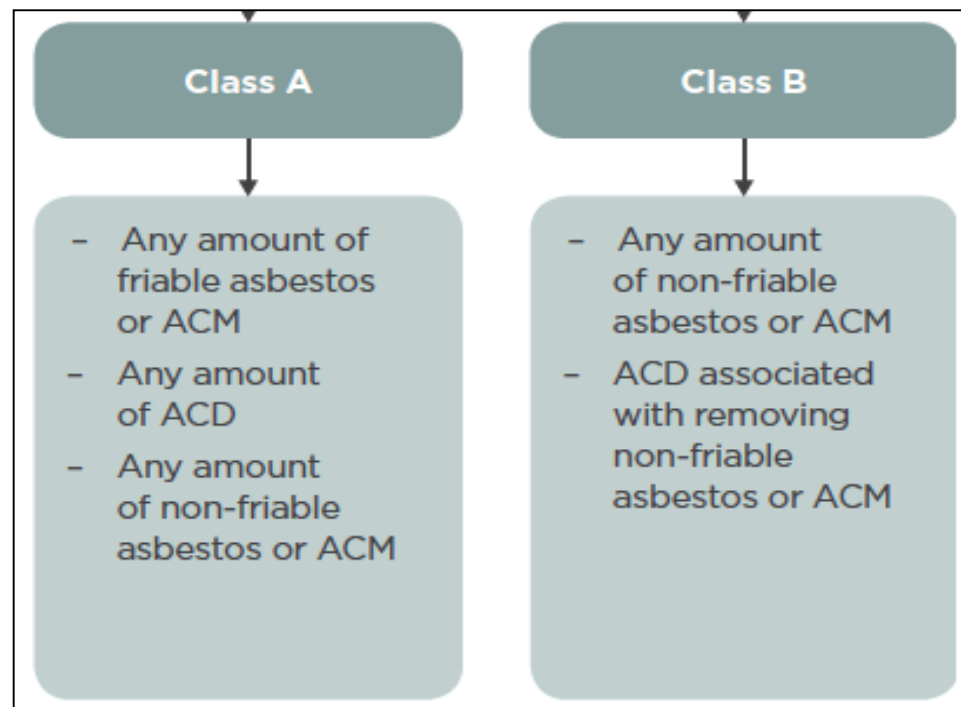
Accordingly, exposure should be prevented.



## Asbestos Removal

The PCBU commissioning the work must ensure that the removalist holds the correct licence.

No licence is required for <10m<sup>2</sup> of non-friable but competence is required. PCBU must also ensure for Class A work air sampling is conducted by a licensed assessor



\*By April 2018 all Class A removalists require a Certified SMS

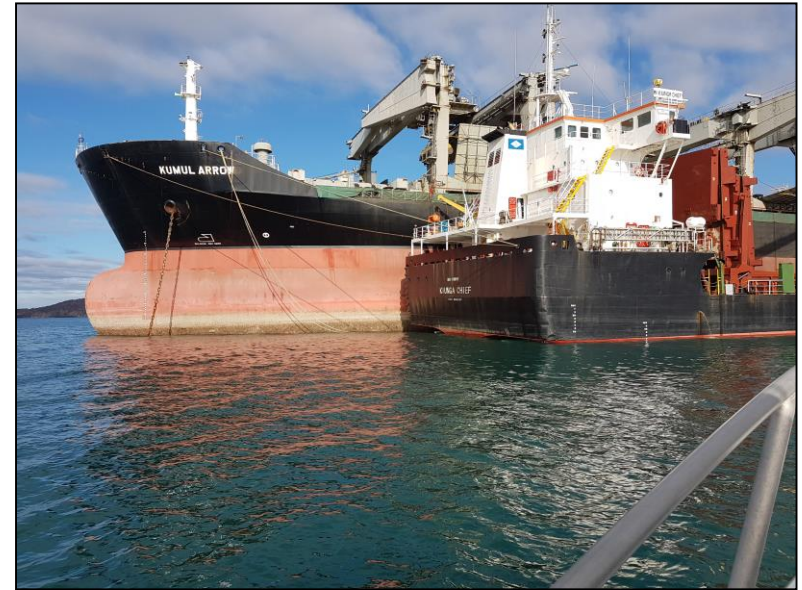


HSE New Zealand  
Health Safety Environment

**asbestos**  
environmental consultants



## Government Industrial Units NZ - High Risk ACM Removals



Papua New Guinea – Vessel ISM  
/ H&S Inspections



Earthquake Response HazMat  
inspections





HSE New Zealand  
Health Safety Environment

**asbestos**  
environmental consultants



West Atlas Wreck Removal – Montara  
Field – Occupational Hygiene  
Consultancy



Oil Tanker Conversion – Subic  
Bay, Philippines – Hazardous  
Materials Removal



Noble Bob Douglas – New Zealand -  
HSE Advisory and Injury Management



HSE New Zealand  
Health Safety Environment

**asbestos**  
environmental consultants



## Service Offerings

H&S Officer Due Diligence and Corporate Governance Reviews

Asbestos & Hazardous Material Surveys & Management

Asbestos Removal Project Management

WorkSafe NZ Licensed Asbestos Assessors for Class A

Airborne Contaminant and Personal Exposure Monitoring

Laboratory Testing Services

H&S / ISM / Environmental Audits and Inspections

ISO9001 / 14001 / 18001 Management Systems - MANGO

Workplace & Property Risk Assessments

Contractor Management & Pre-Qualification

Root Cause and Liability Investigations

Noise Assessments, Monitoring and Management



HSE New Zealand  
Health Safety Environment

**asbestos**  
environmental consultants



[www.asbestosnz.com](http://www.asbestosnz.com)

*Creating Safer Spaces*

[www.hsenz.com](http://www.hsenz.com)