

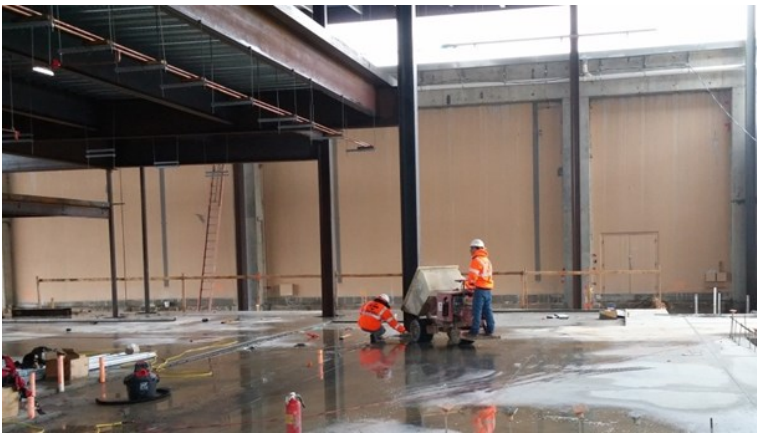


Reducing Pushing Force – Wheelbarrows



With full wheelbarrows of concrete the force needed to push this wheelbarrow could be seen as the worker struggled to go forward.

CHANCE FOR INJURY – Significant lifting and pushing forces increase the potential for a strain type injury.



SAFER WAY– Eliminating the force needed to lift and push by using mechanical means of delivery is the best practice.

If mechanical means are infeasible– the force can be reduced by reducing the size of the load. Do not overload wheelbarrows.



ERGO MINUTE

ORCIG 2017 ErgoMinute Series

This material is intended to be a broad overview of the subject matter and is provided for informational purposes only. Old Republic Contractors Insurance Group, Inc. does not endorse or recommend any products or services nor does it make any representation or warranty regarding the accuracy or completeness of the information. Old Republic Contractors Insurance Group, Inc. shall have no liability or responsibility to any person or entity with respect to any loss, action or inaction alleged to be caused directly or indirectly as a result of the information contained herein.

