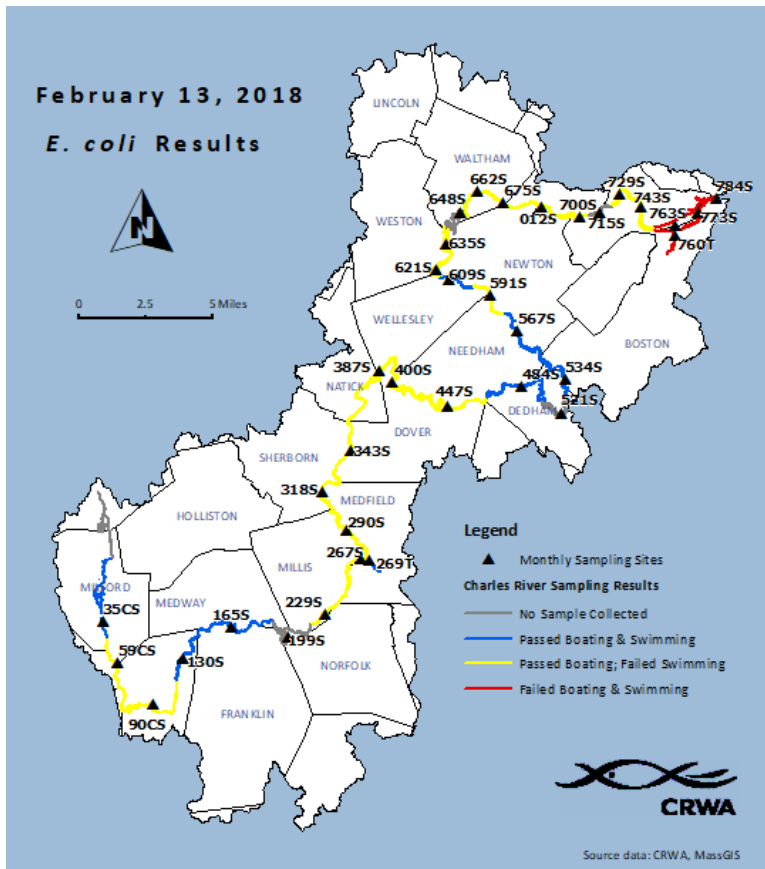


# Charles River Watershed Association Monthly Water Quality Monitoring



**CRWA**

Saving the Charles River since 1965



## Rainfall at Logan International Airport (inches)

3 days prior to sampling	0.02
2 days prior to sampling	0.69
1 day prior to sampling	0.00
Day of sampling	0.00

With a total of 0.71 inches of precipitation occurring over the three days preceding sampling at 6:00 AM, the January event was classified as a wet weather sampling event.

The blue color represents river reaches that met the *E. coli* swimming standard of 126 colony forming units per 100 milliliters (about a teacup of water) (#/100ml). Yellow represents the reaches of the river that exceeded the swimming standard yet met the boating standard of 630 cfu/100ml. A violation of the boating standard is represented by the red color. Reaches of the river colored gray represent non-sampled areas. Standards are set by the Massachusetts Department of Environmental Protection (MassDEP) to indicate level of health risk in freshwaters. MassDEP recommends not swimming or fishing when the geometric mean of bacteria counts exceed 126/100ml, and not boating on days when the geometric mean of levels rise above 630/100ml.

