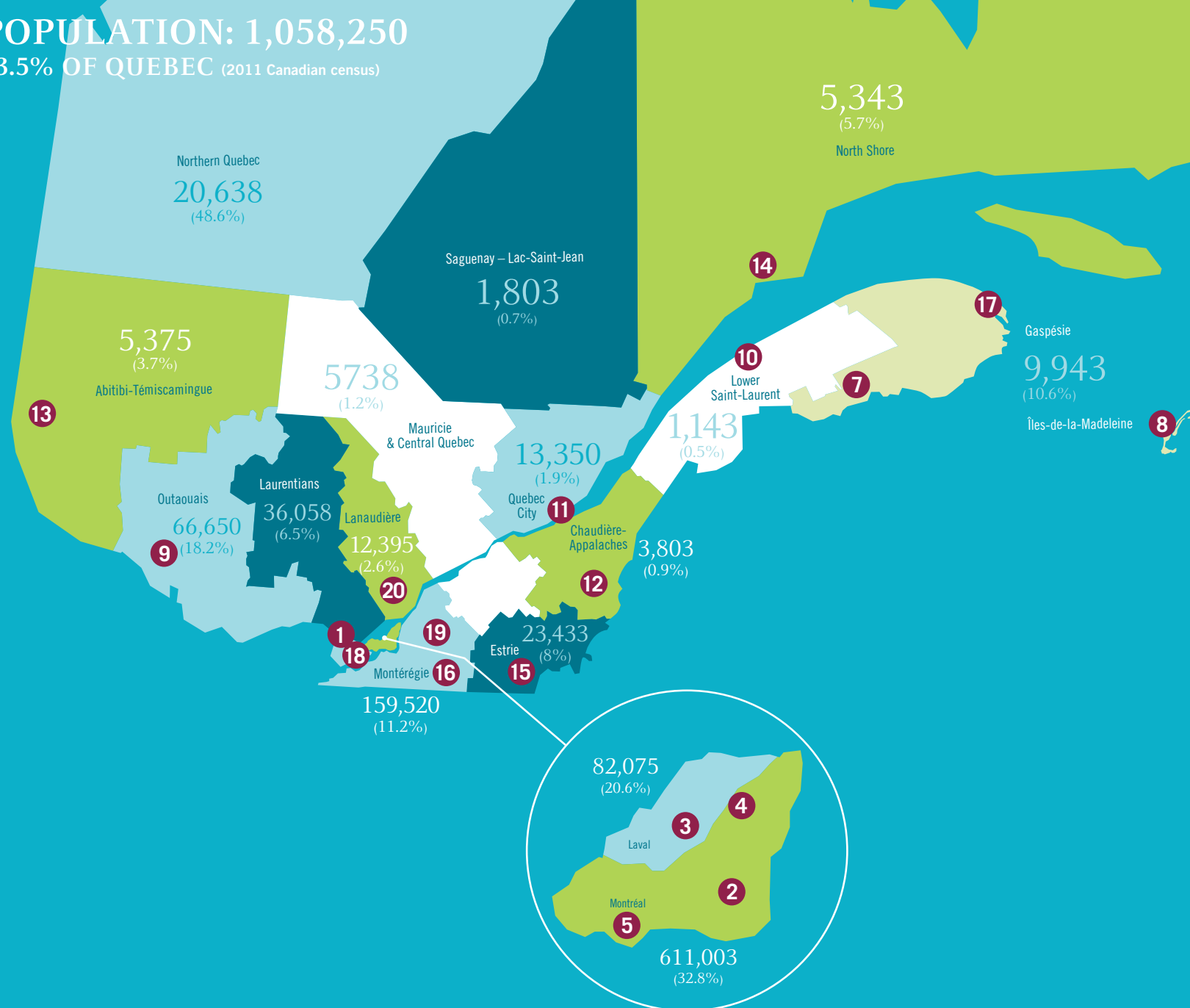


# Quebec's English-Speaking Communities

POPULATION: 1,058,250  
13.5% OF QUEBEC (2011 Canadian census)



## Local Partners in CHSSN's Networking & Partnership Initiative (NPI)

- |  |  |
|--|--|
| <b>1 Deux-Montagnes</b><br>4 Korners Family Resource Centre                            | <b>11 Québec City</b><br>Jeffery Hale Community Partners                                 |
| <b>2 Côte-des-Neiges</b><br>African Canadian Development & Prevention Network (ACDPN)  | <b>12 Thetford Mines</b><br>Megantic English-Speaking Community Development Corp. (MCDC) |
| <b>3 Laval</b><br>AGAPE – The Youth & Parents AGAPE Association Inc.                   | <b>13 Rouyn-Noranda</b><br>Neighbours Regional Association of Rouyn-Noranda              |
| <b>4 Saint-Léonard</b><br>Canadian-Italian Community Services of Quebec (REISA)        | <b>14 Baie-Comeau</b><br>North Shore Community Association (NSCA)                        |
| <b>5 Montréal</b><br>Catholic Community Services (CCS)                                 | <b>15 Sherbrooke</b><br>Townshippers' Association  |
| <b>6 Saint-Paul's River</b><br>Coasters Association (LNSCH)                            | <b>16 Cowansville</b><br>Townshippers' Association                                       |
| <b>7 New Carlisle</b><br>Committee for Anglophone Social Action (CASA)                 | <b>17 Gaspé</b><br>Vision Gaspé Percé Now  |
| <b>8 Grosse-Île</b><br>Council for Anglophone Magdalen Islanders (C.A.M.I. – MINA)     | <b>18 Vaudreuil-Dorion</b><br>Vaudreuil-Soulanges (C3S CSSS)                             |
| <b>9 Gatineau</b><br>English Network of Resources in Community Health (ENRICH – OHSSN) | <b>19 Saint-Lambert</b><br>South Shore Assistance and Referral Centre (ARC)              |
| <b>10 Métis-sur-Mer</b><br>Heritage Lower Saint Lawrence                               | <b>20 Rawdon</b><br>English Community Organization of Lanaudière (ECOL)                  |