

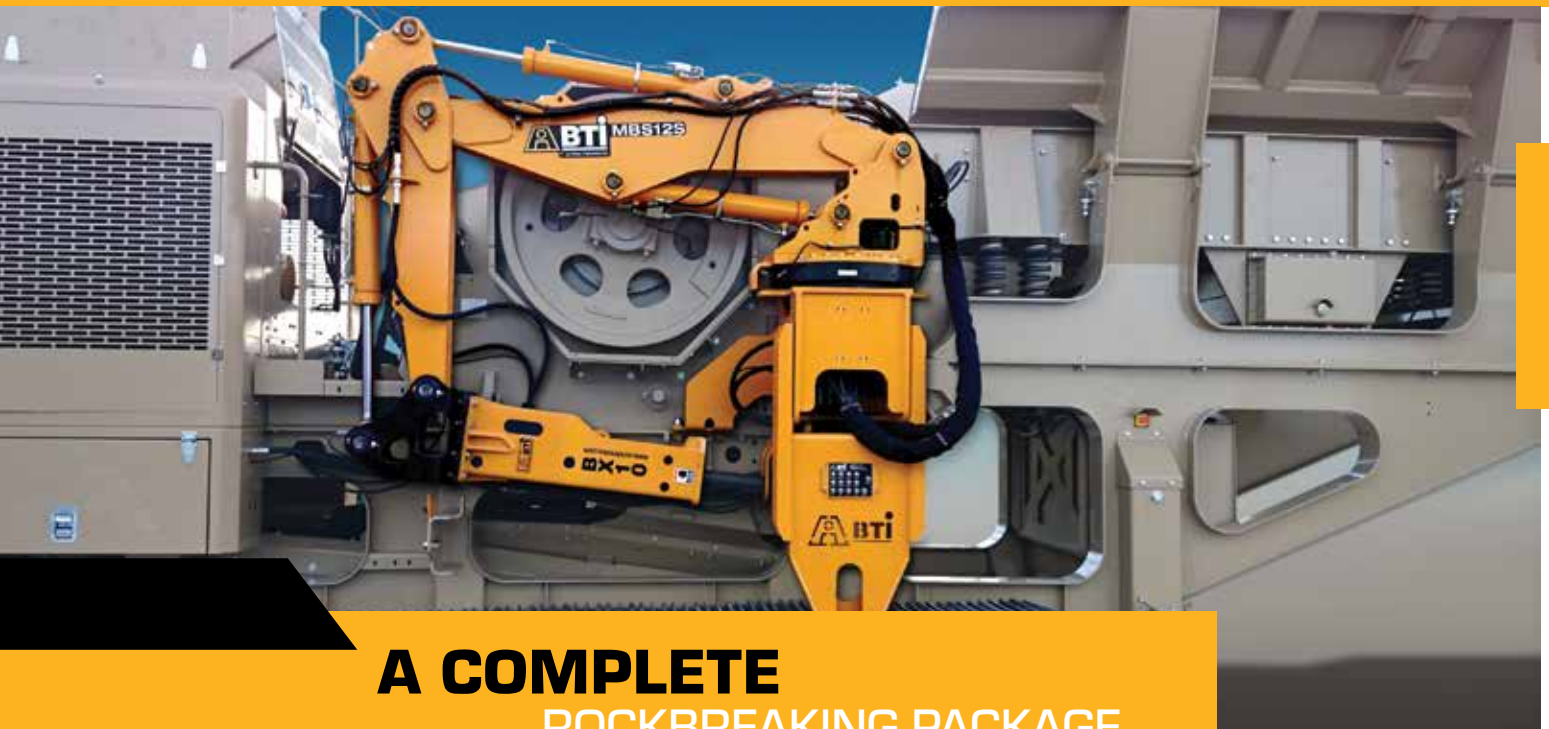
Breaker Technology Ltd.
 35 Elgin Street North
 Thornbury, Ontario
 N0H 2P0 Canada
 Phone: 519.599.2015
 Fax: 519.599.6803

Breaker Technology Inc.
 30625 Solon Industrial Pkwy
 Solon, Ohio
 44139 USA
 Phone: 440.542.3720
 Fax: 440.542.3721

Breaker Technology Inc.
 3453 Durahart Street
 Riverside, California
 92507 USA
 Phone: 951.369.0878
 Fax: 951.369.8281

Find us on

 www.rockbreaker.com
 30800-ENG-0219



MBS SERIES

A COMPLETE ROCKBREAKING PACKAGE

MBS SERIES ROCKBREAKER SYSTEMS

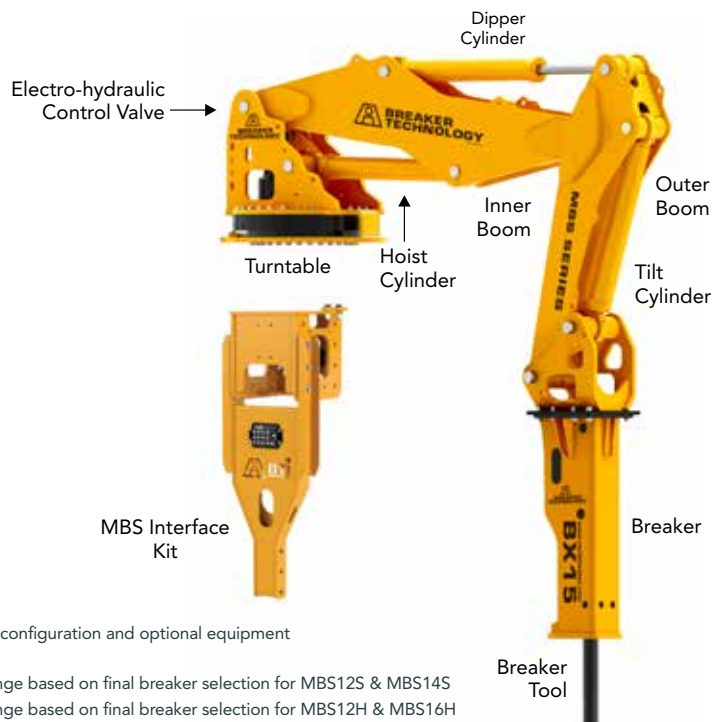
Lightweight and robust, BTI's MBS Series Rockbreaker Systems are for light and medium-duty breaking on track, portable, and other small crushing plants. The series offers an on-plant solution where safety and productivity are essential. The compact rockbreaker system operates a range of hydraulic breakers up to 3,000 ft-lb (4 100 J), with a 12-to-16 foot reach, making short work of oversized material for increased safety and improved production. The system pairs well with BTI's CX4 to BX30 hydraulic breakers. BTI Rockbreaker Systems are engineered for maximum life using finite element analysis software (FEA) in all raking and breaking functions.

APPLICATIONS:

Mobile // Jaw // Impact



SPECS



BOOM SPECIFICATIONS

BOOM OPTIONS

- ⊕ Pedestal-to-concrete foundation kit
- ⊕ Pedestal-to-steel structure mounting kit
- ⊕ Crusher Interface Kit
- ⊕ Expander pins
- ⊕ Cold weather conditioning package
- ⊕ Cold weather grade steel plate construction

* Operating weight is dependent on final breaker size, power pack configuration and optional equipment

**Dimensions based referenced from center of swing rotation.

**Dimensions nominal (based on BX15 breaker) and subject to change based on final breaker selection for MBS12S & MBS14S

**Dimensions nominal (based on BX20 breaker) and subject to change based on final breaker selection for MBS12H & MBS16H

MODEL		MBS12S	MBS12H	MBS14S	MBS16H
Operating Weight Range (Complete System) *	LB	4,788 - 6,706	6,108 - 8,026	3,703 - 4,807	5,467 - 7,739
	KG	2,172 - 3,042	2,770 - 3,640	1,680 - 2,181	2,480 - 3,511
Base Dimensions	FT IN	2' 10" diameter			
	M	0.9 diameter			
Vertical Breaker Reach Forward **	FT IN	11' 3"	11' 8"	13' 4"	16' 3"
	M	3.4	3.5	4.0	4.9
Vertical Breaker Reach Down**	FT IN	7' 11"	9' 5"	9'	11' 8"
	M	2.4	2.8	2.7	3.5
Maximum Reach Forward**	FT IN	16' 4"	17' 9"	18' 6"	22' 5"
	M	4.9	5.4	5.6	6.8
Swing Rotation Angle		330° Indexable Turntable			
Recommended Breaker Range		CX4 - BX15	BX20 - BX30	CX4 - BX15	CX4 - BX30

Specifications are subject to change without obligation of prior notice. All results may vary.



HYDRAULIC BREAKER SPECIFICATIONS

HYDRAULIC BREAKER SPECIFICATIONS

- ⊕ Fully enclosed box housing; reduces vibration back to the boom.
- ⊕ Anti blank fire interlock selector; reduces stress on breaker components

HYDRAULIC BREAKER OPTIONS

- ⊕ Side mounted breakers; allows operation in low head room
- ⊕ Wear bars and extreme duty kits; extend service life
- ⊕ Quick couplers and buckets; provides a painless attachment change out for cleaning of rock boxes
- ⊕ Grapple attachment
- ⊕ Magnet attachment

TOOLS

BTI offers a choice of tools and lengths for all breakers



MODEL	ENERGY CLASS	OPERATING WEIGHT	TOOL DIA.	BLOW RATE	FLOW RATE	OPERATING PRESSURE
BX10	1,000 ft-lb (1 350 J)	948 lb (430 kg)	3.1" (78 mm)	900 bpm	21 gpm (80 lpm)	2,000 psi (140 bar)
BX15	1,500 ft-lb (2 000 J)	1,355 lb (615 kg)	3.3" (85 mm)	700 bpm	27 gpm (100 lpm)	2,000 psi (140 bar)
BX20	2,000 ft-lb (2 700 J)	2050 lb (930 kg)	4.1" (105 mm)	550 bpm	29 gpm (110 lpm)	2,300 psi (160 bar)
BX30	3,000 ft-lb (4 100 J)	2688 lb (1 210 kg)	4.7" (120 mm)	550 bpm	37 gpm (140 lpm)	2,450 psi (170 bar)

Values based on flow rates from matching hydraulic power unit. Specifications are subject to change without obligation of prior notice. All results may vary.