

Breaker Technology Ltd.
 35 Elgin Street North
 Thornbury, Ontario
 N0H 2P0 Canada
 Phone: 519.599.2015
 Fax: 519.599.6803

Breaker Technology Inc.
 30625 Solon Industrial Pkwy
 Solon, Ohio
 44139 USA
 Phone: 440.542.3720
 Fax: 440.542.3721

Breaker Technology Inc.
 3453 Durahart Street
 Riverside, California
 92507 USA
 Phone: 951.369.0878
 Fax: 951.369.8281

Find us on

 www.rockbreaker.com
 32000-ENG-0219



A COMPLETE ROCKBREAKING PACKAGE

MRST SERIES SERIES ROCKBREAKER SYSTEMS

Built to withstand harsh conditions both underground and above, the MRST Series Rockbreaker Systems provides maximum endurance in both gyratory and grizzly applications. The system has a turntable-style pedestal base with a 330-degree constant torque rotation. The system's reach is 25 to 35 feet (7 to 11 meters), paired with a 4,000 ft-lb to 8,500 ft-lb (5 400 to 11 500 joules) hydraulic breakers. BTI Rockbreaker Systems are engineered for maximum life using finite element analysis software (FEA) in all raking and breaking functions.

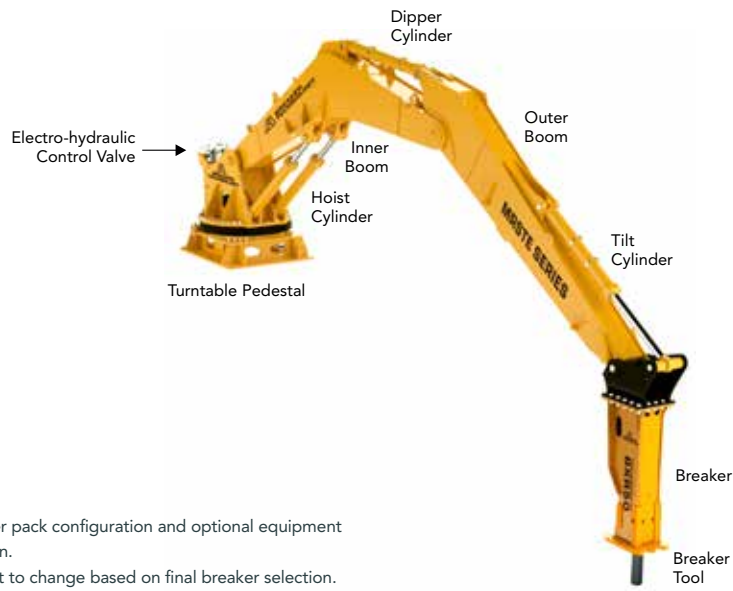
APPLICATIONS:

Grizzly // Gyratory



MRST/MRSTE
SERIES

SPECS



BOOM SPECIFICATIONS

BOOM OPTIONS

- ⊕ Pedestal to concrete foundation kit
- ⊕ Pedestal to steel structure mounting kit
- ⊕ Expander pins
- ⊕ Cold weather conditioning package
- ⊕ Cold weather grade steel plate construction

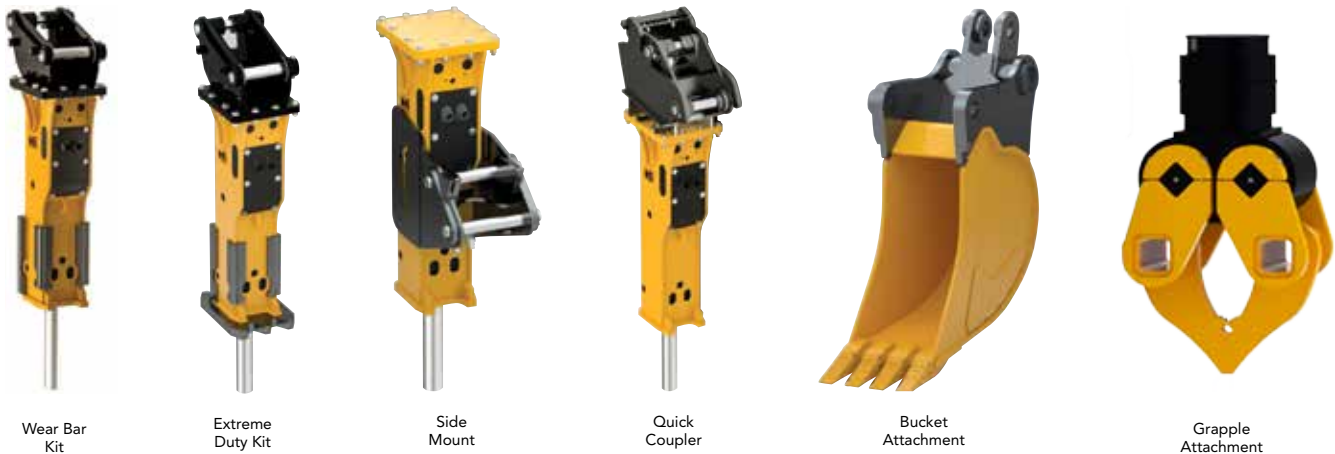
* Operating weight is dependent on final breaker size, power pack configuration and optional equipment

**Dimensions based referenced from center of swing rotation.

**Dimensions nominal (based on BXR65 breaker) and subject to change based on final breaker selection.

MODEL		MRST SERIES			MRSTE SERIES		
		MRST 25	MRST 30	MRST 35	MRSTE 25	MRSTE 30	MRSTE 35
Operating Weight Range (Complete System) *	LB	12,510 - 14,110	12,910 - 14,510	13,210 - 14,810	12,510 - 14,110	12,910 - 14,510	13,210 - 14,810
	KG	5 674 - 6 400	5 856 - 6 582	5 992 - 6 718	5 674 - 6 400	5 856 - 6 582	5 992 - 6 718
Base Dimensions	INCH	6' x 5'					
	M	1.8 x 1.5					
Vertical Breaker Reach Forward **	FT IN	24' 9"	29' 8"	34' 10"	24' 4"	29' 7"	34' 9"
	M	7.5	9.0	10.6	7.4	9.0	10.5
Vertical Breaker Reach Down**	FT IN	15' 9"	18' 11"	21' 5"	20' 1"	25' 9"	29' 7"
	M	4.8	5.7	6.5	6.7	7.8	9.0
Maximum Reach Forward**	FT IN	34'	38' 6"	43' 3"	34' 6"	38' 7"	43' 4"
	M	10.3	11.7	13.1	10.5	11.6	13.2
Swing Rotation Angle	Degree	330° Pedestal Swing Post			330° Indexable Turntable		
Recommended Breaker Range		BX40 to BXR65			BX40 to BXR65		

Specifications are subject to change without obligation of prior notice. All results may vary.



HYDRAULIC BREAKER SPECIFICATIONS

HYDRAULIC BREAKER SPECIFICATIONS

- ⊕ Fully enclosed box housing; reduces vibration back to the boom.
- ⊕ Anti blank fire interlock selector; reduces stress on breaker components

HYDRAULIC BREAKER OPTIONS

- ⊕ Side mounted breakers; allows operation in low head room
- ⊕ Wear bars and extreme duty kits; extend service life
- ⊕ Quick couplers and buckets; provides a painless attachment change out for cleaning of rock boxes
- ⊕ Grapple attachment
- ⊕ Magnet attachment

TOOLS

BTI offers a choice of tools and lengths for all breakers



MODEL	ENERGY CLASS	OPERATING WEIGHT	TOOL DIA.	BLOW RATE	FLOW RATE	OPERATING PRESSURE
BX40	4,000 ft-lb (5 420 J)	3,830 lb (1740 kg)	5.3" (135 mm)	500 bpm	42 gpm (160 lpm)	2,450 psi (170 bar)
BXR50	5,000 ft-lb (6 780 J)	4,200 lb (1 910 kg)	5.5 (140 mm)	640 bpm	53 gpm (200 lpm)	2,700 psi (186 bar)
BXR65	6,500 ft-lb (8 810 J)	4,860 lb (2 200 kg)	6.0 (150 mm)	580 bpm	58 gpm (220 lpm)	2,700 psi (186 bar)
BXR85	8,500 ft-lb (11 520 J)	6,500 lb (2 950 kg)	6.3" (160 mm)	340 - 490 bpm	51 - 63 gpm (190- 240 lpm)	2,700 psi (186 bar)

Values based on flow rates from matching hydraulic power unit. Specifications are subject to change without obligation of prior notice. All results may vary.