



**BRITESPAN**  
BUILDING SYSTEMS INC

# Mining, Oil & Gas Building Solutions

## Maintenance, Equipment & Processing Facilities.

Britespan offers the widest product line in the fabric building industry, with engineered structures from 24' to 300' wide to any length. We provide building solutions for every application that are efficient to build and have lower ongoing operating costs than traditional buildings.

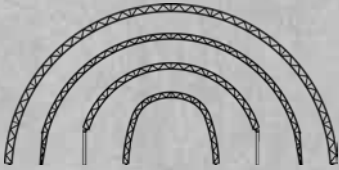
Britespan's authorized dealers are industry experts and local to our customers, providing project management from concept to completion.



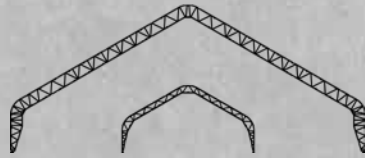
# Building Series

Britespan has been in the fabric building industry since 1994, offering the widest product line available today. We design, engineer and manufacture each product line in-house.

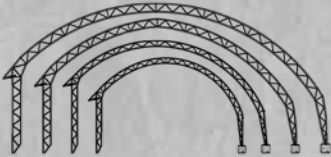
Our structures are engineered to be portable, temporary or permanent, with rapid installs even in remote areas.



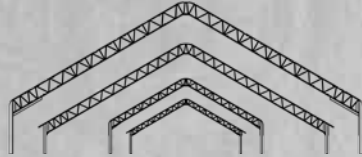
**Atlas Series**  
24' - 108' wide



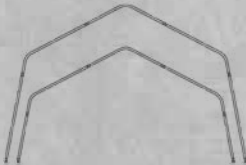
**Genesis Series**  
80' - 200' wide



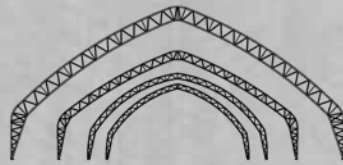
**Easy Access Series**  
38' - 67' wide



**Epic Series**  
80' - 120' wide



**Accent Series**  
26' - 32' wide



**Apex Series**  
53' - 100' wide



**Rigid Beam Series**  
Up to 300' wide

Custom eaves, heights and slopes available

## Custom Fabric Colours Available

Contact us for details on our full line of colour options or to request fabric samples.

## Why Britespan?



### HOT DIP GALVANIZING

Post-weld hot dip galvanizing bonds to steel to provide lifelong corrosion resistance from the inside out.



### VENTILATION

Large volumes of interior air space give you superior air quality and ventilation.



### CLEARSPAN INTERIOR

With no interior columns, movement throughout the interior is easy for vehicles and equipment.



### LIGHT

Naturally bright interiors create comfortable environments and help reduce energy costs.



### QUALITY

Constructed from quality North American steel and engineered to comply with the most current building codes.



### RETURN ON INVESTMENT

Our structures provide large, bright, secure spaces with reduced operating and maintenance costs.

Britespan buildings can be added onto existing Cover-All Buildings

For more information, call us at  
**1.800.407.5846** or visit us online.

**britespanbuildings.com**

