



Eclipse

at Silver Creek Village

Bottero

2,743-2,777 Total SF | 3 bed | 2.5 bath | 2-car garage



This home offers an open main floor living space featuring soaring two story ceilings showcasing grand windows while providing natural light into both the first and second floors. Formal dining located just off of the spacious kitchen is perfect for entertaining or quiet nights in. A conveniently located mud room and powder room complete the first floor. The secluded master suite offers vaulted ceilings, large walk in closet and private bath. With two additional bedrooms, bathroom and loft space this home has all the right spaces.

*Floorplans and renderings are conceptual drawings and may vary from actual plans and homes as built. Options and features may not be available on all homes and are subject to change without notice. Dimensions are approximate. Actual homes may vary from photos and/or drawings which may show upgrades and may not represent the lowest-priced homes in the community. 10/14/19



garbetthomes.com

801 396-9882



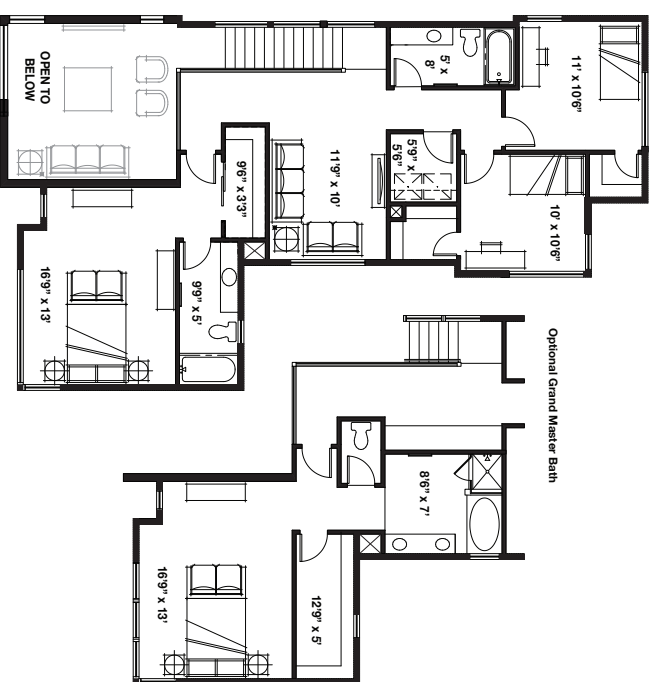
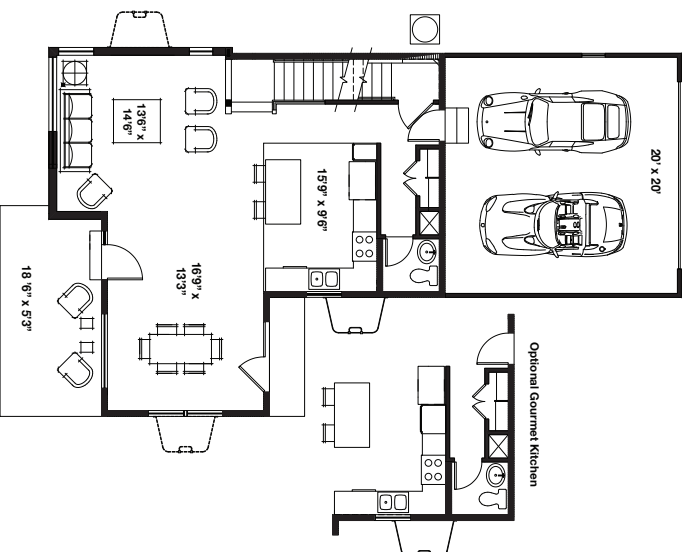
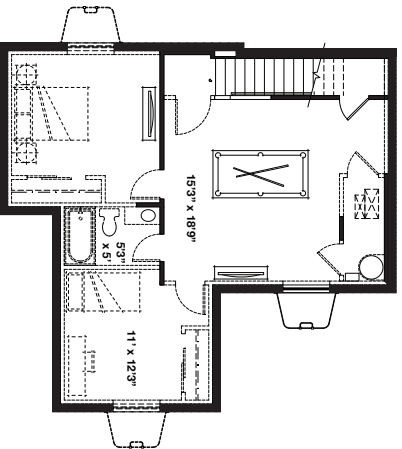


Eclipse

at Silver Creek Village

Bottero

2,528-2,868 Total SF | 3 bed | 2.5 bath | 2-car garage



*Floorplans and renderings are conceptual drawings and may vary from actual plans and homes as built. Options and features may not be available on all homes and are subject to change without notice. Dimensions are approximate. Actual homes may vary from photos and/or drawings which may show upgrades and may not represent the lowest-priced homes in the community. 10/14/19