



Stonecroft & Windcroft *Eleanor*

SF 2,710 | 3 Bedrooms | 2.5 Bathrooms | 3 Car Garage

Elevation 1



Elevation 2



The Eleanor offers an abundance of light. The entry pulls you into a bright great room with plentiful windows and two-story volume ceiling. The space continues with dining area and a kitchen, featuring ample cabinet, counter and pantry space. An accommodating mudroom/drop zone with half bath complete the first floor. Upstairs, enjoy the view of the main floor great room, bringing plenty of natural light to the stairs and hallway. Unwind in a spacious master suite with private bath, his and hers walk-in closets and convenient access to the hall laundry room. A second full bath, and two more bedrooms complete this home and provide additional spaces to make your own.

*Floorplans and renderings are conceptual drawings and may vary from actual plans and homes as built. Options and features may not be available on all homes and are subject to change without notice. Dimensions are approximate. Actual homes may vary from photos and/or drawings which may show upgrades and may not represent the lowest-priced homes in the community. 10/16/19



garbetthomes.com

801 396-9882

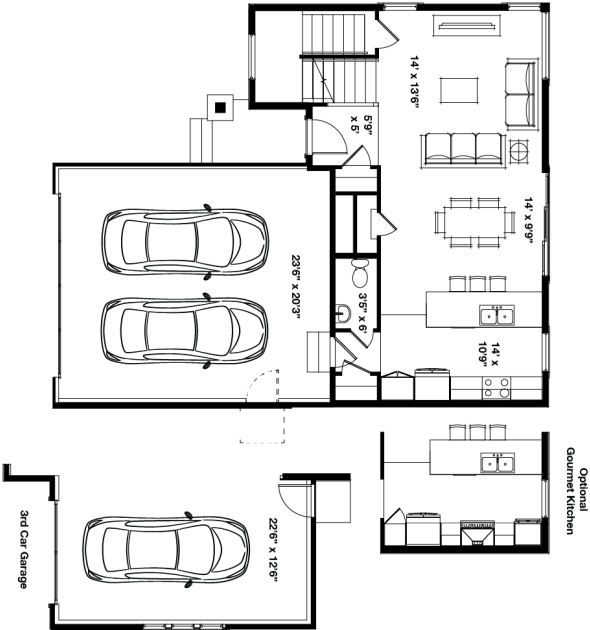
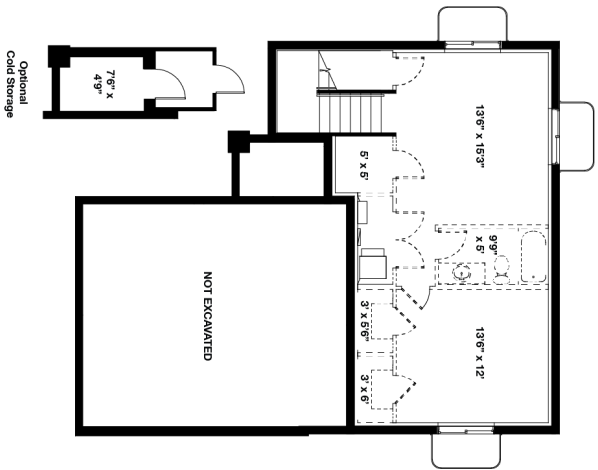




Stonecroft & Windcroft

Eleanor

SF 2,710 | 3 Bedrooms | 2.5 Bathrooms | 3 Car Garage



*Floorplans and renderings are conceptual drawings and may vary from actual plans and homes as built. Options and features may not be available on all homes and are subject to change without notice. Dimensions are approximate. Actual homes may vary from photos and/or drawings which may show upgrades and may not represent the lowest-priced homes in the community.