



Stonecroft & Windcroft *Hartley*

SF 4,110 | 3 Bedrooms + Loft | 2.5 Bathrooms | 3 Car Garage

Elevation 1



Elevation 2



The Hartley delivers on space! Entry into the living room offers a space for guests separate from the rest of the home. Continue into the great room with ample space to utilize how you choose and enjoy the main floor. The flow continues into a large dining area and kitchen with island and generous pantry. A mud area off the garage with coat closet and half bath complete the first floor. Upstairs, enjoy additional space to customize with a loft, hall laundry room, full bath and two secondary bedroom with walk-in closets. Complete your tour with the master suite, set away from the other rooms, it offers retreat to a private master bath and well sized, his and hers walk-in closets.

*Floorplans and renderings are conceptual drawings and may vary from actual plans and homes as built. Options and features may not be available on all homes and are subject to change without notice. Dimensions are approximate. Actual homes may vary from photos and/or drawings which may show upgrades and may not represent the lowest-priced homes in the community. 8/08/19



garbetthomes.com

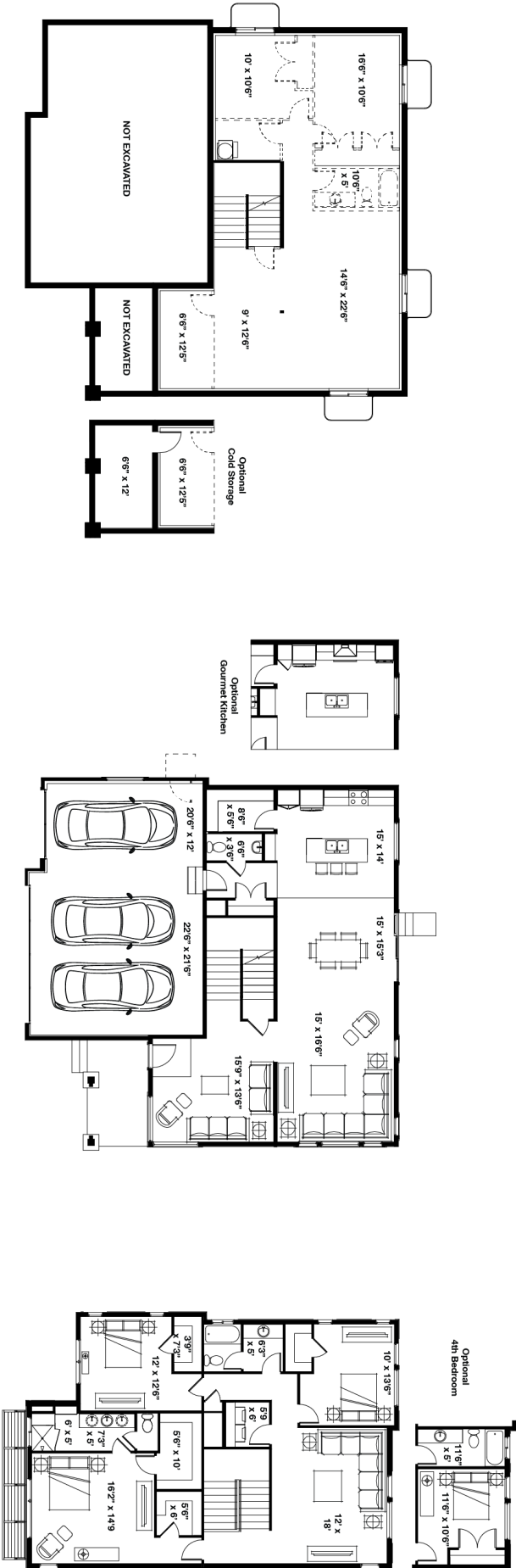
801 396-9882





Stonecroft & Windcroft *Hartley*

SF 4,110 | 3 Bedrooms + Loft | 2.5 Bathrooms | 3 Car Garage



*Floorplans and renderings are conceptual drawings and may vary from actual plans and homes as built. Options and features may not be available on all homes and are subject to change without notice. Dimensions are approximate. Actual homes may vary from photos and/or drawings which may show upgrades and may not represent the lowest-priced homes in the community. 8/08/19