



Stonecroft & Windcroft *Myles*

SF 4,178 | 3 Bedrooms | 2 Bathrooms | 3 Car Garage

Elevation 1



Elevation 2



The Myles offers something different with a unique ranch-style flow. The entry provides place to receive guests as well as access to the first bedroom or optional office. The flow really hits the right notes when you move into the kitchen with island and large walk-in pantry. Continue on to an open great room with plenty of space for living and casual dining, even for larger gatherings. Tucked away from the entry and main living space, is the master suite with dual walk-in closets and a large master bath. Completing this home is a full bath, third bedroom with walk-in closet, and mudroom off the garage with separate laundry space.

*Floorplans and renderings are conceptual drawings and may vary from actual plans and homes as built. Options and features may not be available on all homes and are subject to change without notice. Dimensions are approximate. Actual homes may vary from photos and/or drawings which may show upgrades and may not represent the lowest-priced homes in the community. 10/21/19



garbetthomes.com

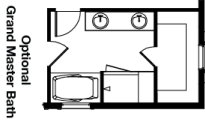
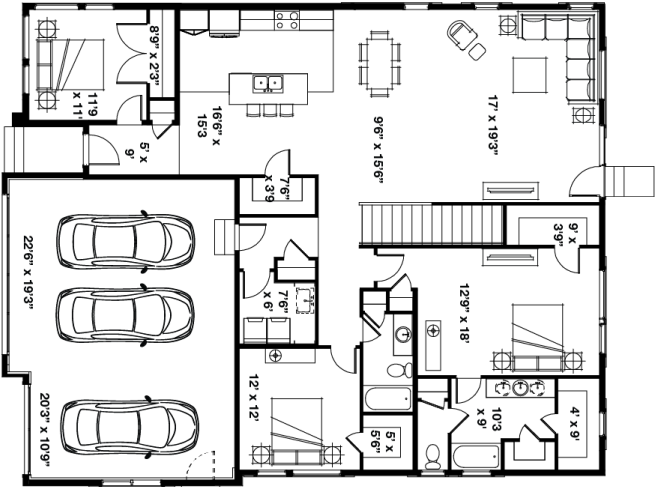
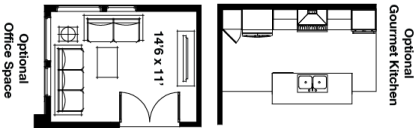
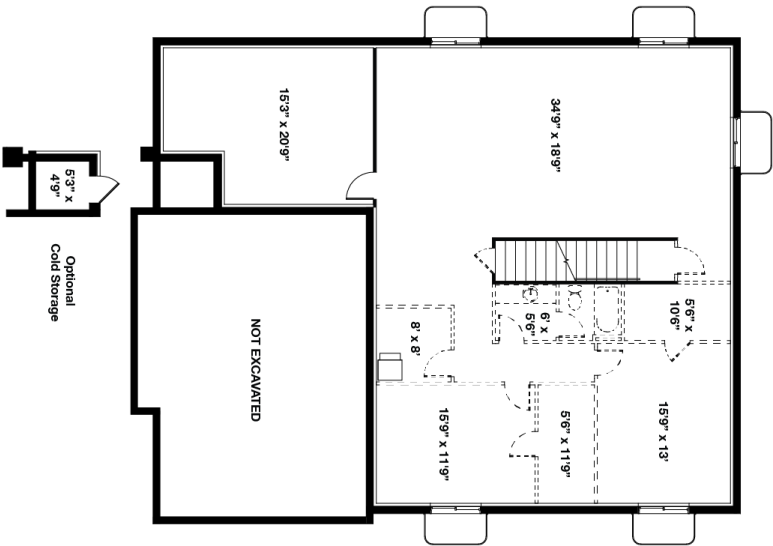
801 396-9882





Stonecroft & Windcroft *Myles*

SF 4,178 | 3 Bedrooms | 2 Bathrooms | 3 Car Garage



*Floorplans and renderings are conceptual drawings and may vary from actual plans and homes as built. Options and features may not be available on all homes and are subject to change without notice. Dimensions are approximate. Actual homes may vary from photos and/or drawings which may show upgrades and may not represent the lowest-priced homes in the community.