



Wynwood *Benton*

SF 3,620 | 4 Bedrooms | 2.5 Bathrooms | 2 Car Garage

Elevation 1



Elevation 2



The two-story Benton is designed to maximize on space. The inviting covered porch offers a great place to watch the sunset or rise and it the perfect introduction to this spacious home. You will be greeted by the wide entry, perfect for adding your own decorating touch, and versatile living room. Continue to the back of the home where the generous kitchen with large island and walk-in pantry open to separate dining and great room spaces. The private master suite completes the second floor and is tucked away from the other bedrooms, offering privacy as well as ample space in the bedroom, master bath and walk-in closet.

*Floorplans and renderings are conceptual drawings and may vary from actual plans and homes as built. Options and features may not be available on all homes and are subject to change without notice. Dimensions are approximate. Actual homes may vary from photos and/or drawings which may show upgrades and may not represent the lowest-priced homes in the community. 12/16/20



garbetchomes.com

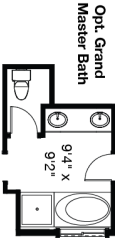
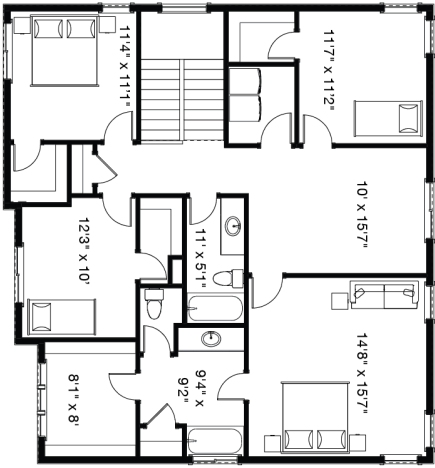
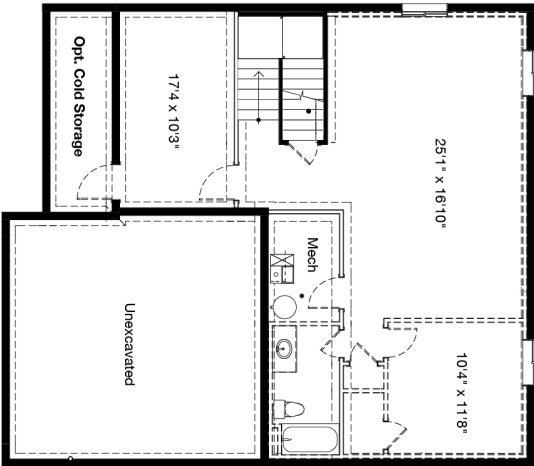
801.396.9882





Wynwood Benton

SF 3,620 | 4 Bedrooms | 2.5 Bathrooms | 2 Car Garage



*Floorplans and renderings are conceptual drawings and may vary from actual plans and homes as built. Options and features may not be available on all homes and are subject to change without notice. Dimensions are approximate. Actual homes may vary from photos and/or drawings which may show upgrades and may not represent the lowest-priced homes in the community. 12/16/20