



Wynwood Sargent

SF 3,319 | 3 Bed + Loft & Den | 2.5 Bathrooms | 2 Car Garage

Elevation 1



Elevation 2



Elevation 3



The two-story Sargent has plenty of space to customize. The inviting covered porch offers the perfect introduction to this spacious home. You will be greeted by the long foyer, the perfect place for receiving guests. Also, off the entry find a half bath and private den that can become an optional fourth bedroom and three-quarter bath. Continue to the back of the home where the generous kitchen with large island and walk-in pantry open to separate dining and great room spaces. Upstairs keep the family retreat separate from the entertaining space on the main floor with two bedrooms, full bath, well-appointed loft, and second-floor laundry room. The private master suite completes the second floor and is tucked away from the other bedrooms, offering privacy as well as ample space in the bedroom, master bath and walk-in closet.

*Floorplans and renderings are conceptual drawings and may vary from actual plans and homes as built. Options and features may not be available on all homes and are subject to change without notice. Dimensions are approximate. Actual homes may vary from photos and/or drawings which may show upgrades and may not represent the lowest-priced homes in the community. 2/25/19



garbetthomes.com

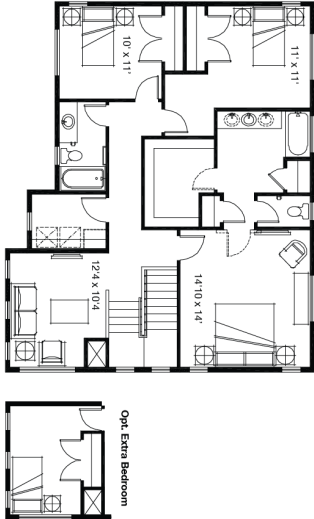
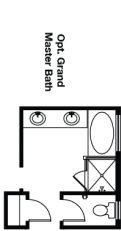
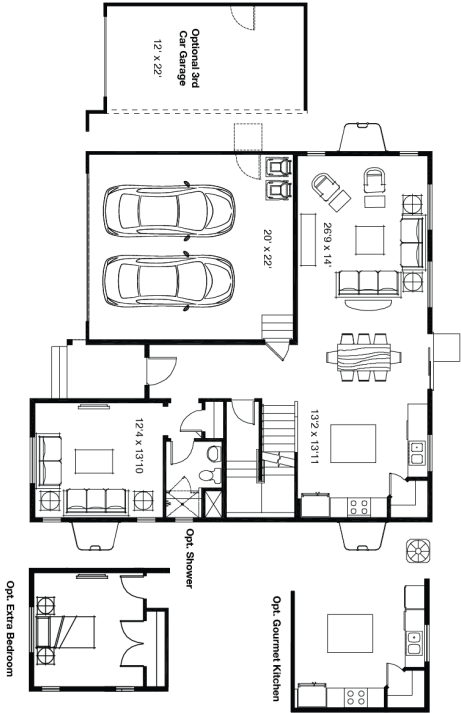
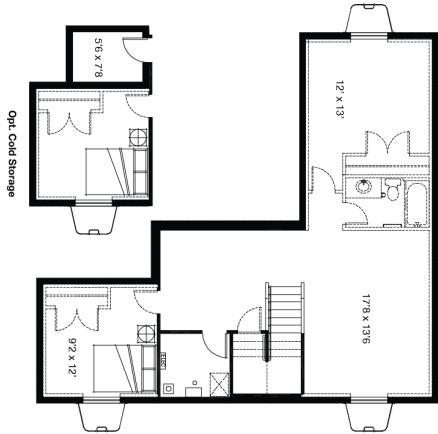
801 396-9882





Wynwood Sargent

SF 3,319 | 3 Bed + Loft & Den | 2.5 Bathrooms | 2 Car Garage



*Floorplans and renderings are conceptual drawings and may vary from actual plans and homes as built. Options and features may not be available on all homes and are subject to change without notice. Dimensions are approximate. Actual homes may vary from photos and/or drawings which may show upgrades and may not represent the lowest-priced homes in the community. 2/25/19