

BED, PAN & LEGS

Bed	L-100012	#3 legend plate	A-99848
Pan	L-105472	Shim	A-99850
Right leg	L-100014	Rear shim	A-101745
Left leg	L-100015	Front shim	A-101746
Stop rod bracket	A-102652	Stop rod plunger	B-102654
Front sump cover	A-59022	Screw plug	B-32063
Pump bracket	A-105473	Stop rod screw	B-36694
Strainer	A-34325	Oil level gage	B-85839
Pan plate	A-56089	Filler braather cap	B-88671
Front sump cover gasket	A-59027	Sump cover gasket	B-92238
Filler block	A-96153	Filter	B-91330
Sump cover rear	A-96154	Block gasket	B-96155
Bedway	A-99840	Motor/pump unit	B-102804
Rack	A-100016	Feed lever stud	B-95019
Stop rod	A-102653	Knob	B-95020
Side splash guard	A-100018	Right leg gasket	B-100024
Rear splash guard	A-100019	Left leg gasket	B-100025
Front splash guard	A-98355	Bedway stud	B-100026
Coolant manifold	A-100020	Gits oiler	502-G
Oil change plate	B-101133	Spring	1557
		Strainer knob	788

Construction Drawings: L-99870, L-100022, L-100023

HEAD

Bearing closer (2) A-86066
Bearing closer A-86067
Spacer B-86074
Spacer B-86079
Spacer B-86082
Shaft A-86083
Spacer B-86131
Spacer B-86203
59T gear A-86817
49T gear A-86820
27T gear A-86821
Pinion shaft A-86831
61T clutch gear A-86931
71T clutch gear A-86932
71T clutch gear A-86933
95T clutch gear A-86934
AS 450 clutch hub A-86937
AS 600 clutch hub A-86938
Spacer shim B-88024
Spacer shim B-88152
99T gear (std. speed) A-86828
93T gear (spl. high speed) A-86124

MRC bearing 1911-S B-91176
MRC bearing 212-S (2) B-91177
MRC bearing 213-SF B-91178
MRC bearing 208-S (2) B-91179
MRC bearing 5209-K (2) B-91180
MRC bearing 5212-K (2) B-91181
MRC bearing 307-SF B-91182
MRC bearing 5309 B-91183
AS 450 Fawick clutch w/ B-91184
B&O hub A-86937 B-91185
AS 600 Fawick clutch w/ B-102139
B&O hub A-86938
Formsprag--- HTH 450 clutch (2) B-102140
hub complete
Formsprag--- HTH 600 clutch (2) B-102140
hub complete

OR

HEAD, HOUSING PIPING

BA-2000-6 90 deg. (Flodar) (2)
BA-3000-6 T (Flodar) (2)
3300 x 4 coupling (Wthrhhd.) (2)
3325 x 4 nipple (Wthrhhd.) (2)
3350 x 4 45 deg. (Wthrhhd.) (2)
V-182 sprayhead (Spraco) (2) - B-85944
Steel tubing (8)
Bulkhead cplg. (W-21204) (2)

Construction Drawings: L-90558, A-97313

SPINDLE

Front bearing closer	A-92209	AS 700 Fawick clutch w/	B-92489
Rear bearing closer	A-92210	B&O hub A-86843	
Spindle	A-92211	OR Formsprag HTH-700 clutch hub	B-102141
Driving button	B-37291	Timken bearing cup #3 prec.752	B-92490
Balancing ring	B-59612	Timken bearing cone #3 prec. 760	B-92491
Spindle gear nut	A-54658	Timken bearing cup #3 prec. 572	B-92492
Adjusting nut	A-54659	Timken bearing cone #3 prec. 581	B-92493
AS 700 clutch hub	A-86843	MRC bearing 9218-S	B-92494
Key	B-86865	Head	L-99845
Bearing retainer	B-90220	Housing	L-99846
87T gear	A-92212	Housing cover	A-99847
48T gear	A-92213	Name plate	A-85059
Bearing spacer	A-92214	Cover gasket	A-99849
	A-92215		
Range gear (30/1600 RPM)		Range gear (39/2000 RPM)	A-86826
31T gear	A-86827	37T gear	

RECORD LOT 426

Construction Drawing: L-91880, L-99851

LAST USED ON LOT 441-2

3-3-P

PRESELECTOR

Cover	L-95862	Pivot	B-95871
Switch bracket	A-95863	Closer	B-95872
Chart plate	A-95864	Bushing	B-95873
Control plate	A-95865	Sprocket	B-95874
Handwheel cup dial	A-97329	Spacer	B-95875
Handwheel	A-93691	Spacer	B-95876
Shaft	A-95866	Stud	(4) B-95881
Dial drum	A-95867	Key	B-95882
Clip	(8) B-31937	MRC bearing 202-SZ	B-95883
Spacer	(4) B-74747	Micro-switch BZ-2RM22-A2	B-95884
Index lever	B-74796	Cam #1	B-99865
Roller	B-74797	Cam #2	B-95878
Spring	B-74799	Cam #3	B-99866
Spacer	(2) B-74806	Cam #4	B-99867
Spacer	(2) B-74807	Drum chart 30/1600	A-99868
Bushing	B-90287	Drum chart 39/2000	A-99869
Arm	(2) B-95870		

Construction Drawing: L-95885

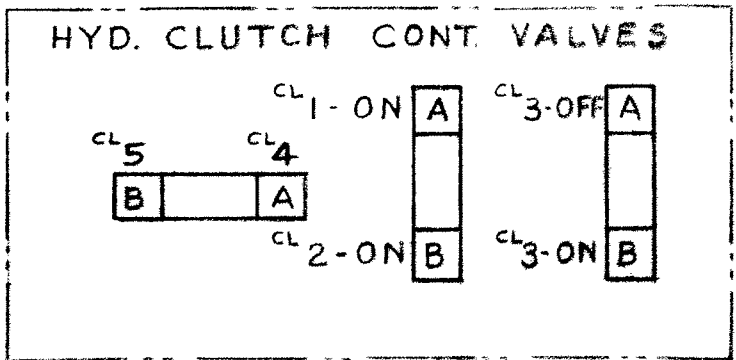
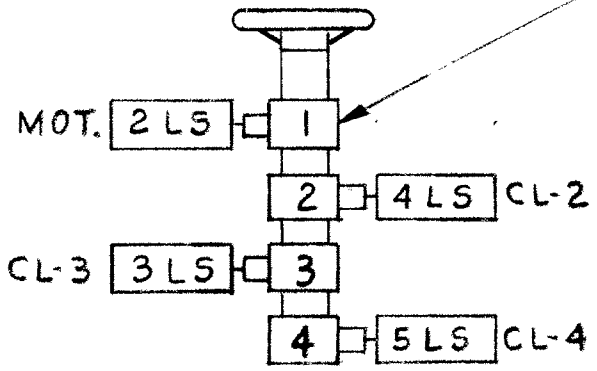
RECORD LOT 426

3-4-P

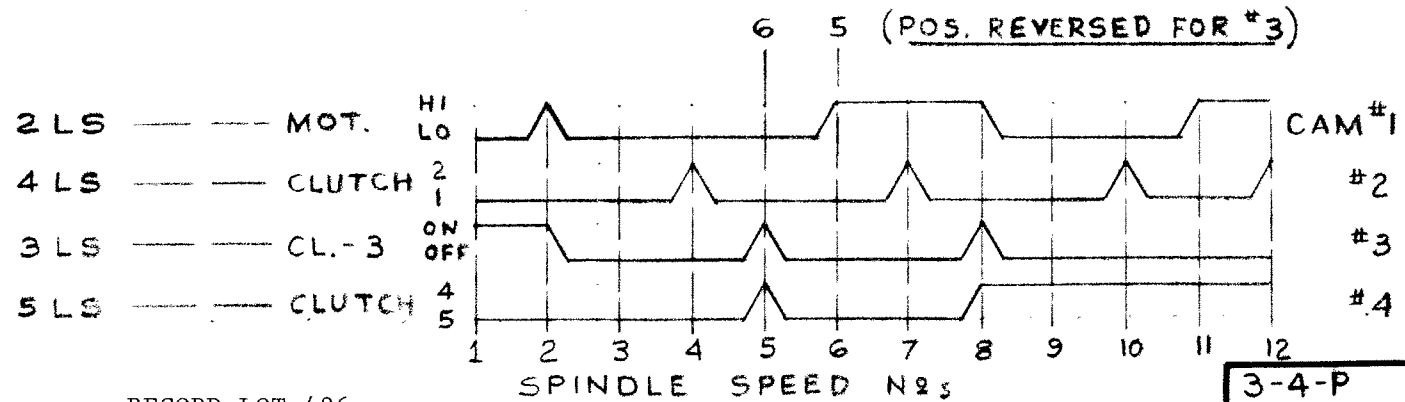
SPINDLE SPEEDS						No	MOT.	CL.	CL.	CL.
NO. 6 UTL			NO. 3 UTL				HI/LO	2/1	3/1-2	HI/LO
25	30	31	37	30	39	1	L		3	L
50	60	61	74	60	78	2	H		3	L
73	88	90	108	90	115	3	L	1		L
103	123	126	151	125	160	4	L	2		L
115	158	141	193	195	245	5	L		3	H
146	176	180	216	175	225	6	H	1		L
206	246	253	303	250	315	7	H	2		L
230	316	284	389	385	490	8	H		3	H
338	464	414	568	570	720	9	L	1		H
474	650	580	796	795	1000	10	L	2		H
676	928	833	1142	1135	1440	11	H	1		H
950	1300	1170	1600	1600	2000	12	H	2		H

1 2 3 4
CAM No

PRE-SELECT UNIT



"AT REAR OF HEAD STK."



RECORD LOT 426

3-4-P

SPINDLE CONTROL

Lever	A-96005	Shaft	B-100437
Control housing	A-100429	Plunger	B-100438
Manifold	L-96006	Stop plate	B-100439
Spring (1 3/32 Lg.)	B-40728-C	Brake detent	B-100440
Dowel pin	B-105243	Pin	B-100441
Spring	B-48061	Detent plate	B-100442
Handle	B-92351	Bushing	B-100444
Switch	B-95884	Drill jig bushing	B-100445
Bushing	B-96010	Spring	B-100328
Bushing	B-96016		(2)
Directional valve	B-96017	For #3 UTL ONLY	
Directional valve	A-104865		
Legend plate	B-102696	Manifold	A-99862
Manifold gasket	S-96260	Lever	A-100436
Lever guard	A-100430	Manifold	A-101924
Housing cover	A-100431	For #6 UTL ONLY	
Lever hub	A-100432		
Collar	A-100433	Manifold	A-96008
Guide	A-100434	Lever	A-102968
Lever plate	A-100435	MRC bearings	B-96018
Limit Switch	B-105560	Manifold	B-88724
Breather	B-95755	Cylinder	B-105567
Switch plate	B-105451		

Construction Drawings: L-99863, L-102012

RECORD LOT 426

3-5-P

MOTOR DRIVE

Motor plate

A-100004

Construction Drawing: L-100007

RECORD LOT 426

3-6-P

ELECTRICAL EQUIPMENT

Control enclosure	A-100213	Support arm	A-100215
Enclosure bracket	A-100214		

Construction Drawing: L-100212

RECORD LOT 426

3-7-P

COLLET CHUCK

Rear spindle guard			
Yoke	L-99968	Abutment sleeve	B-69766
Yoke bracket	A-99969	Adj. sleeve extension	B-83823
Collet hood guard	A-99970	Plunger	B-86841
Cylinder bracket	A-99979	Spindle guard pin	B-86866
Finger	B-99971	Wedge shoe stud	B-100208
Collet pads	A-70711	Hinge	B-95245
Collet	A-36758	Handle	B-98019
Finger holder	A-42589	Spring plunger	B-98856
Collet hood	A-69767	Wedge shoe	B-98863
Cylinder	A-92103	Yoke pivot pin	B-99987
Finger pivot pin	A-99986	Yoke link pin	B-99988
Finger holder friction	B-36830	Cylinder pivot pin	B-99989
Finger roller	B-44274	Cylinder link	B-99990
Roller pin	B-62784	Collet pad screw	B-97805
Wedge	B-62785	Key	C-2214
Finger adj. ring	B-62790	Bushing	B-103292
	B-69765		
	(2)		(2)
			(2)
	(2)		(2)
	(2)		(4)
	(2)		

Construction Drawings: L-99980, A-99981

PNEUMATIC EQUIPMENT

Collet Chuck		B&O Bar Feed
Bracket	A-97270	Speed control muffler(2)
Brace	(2) A-95274	Pressure regulator
Air cylinder	A-99986	Pressure gauge
Speed control muffler(2)	B-88698	Air motor
Air valve	B-95900	Air valve
R.F.L.L. unit	B-96926	

Construction Drawings: A-99995, A-99998

RECORD LOT 426

3-9-P

HEAD END BRACKET

Head end bracket			
Cover	L-99936	Bearing closer	B-97316
Bearing closer	A-99937	18T gear	B-99946
Shaft	A-99938	Bearing closer	B-99947
Gasket	A-95777	Gear shifter	B-99948
Shaft	A-99939	Gear shifter cap	B-99949
39T-26T gear	A-99940	Sight gauge	B-95753
52T-39T gear	A-99941	Garlock seal 63 x 293	B-97319
39T gear	A-99942		
Head gear	A-99943	C.R. seal 6203	B-99957
Spindle gear	A-99944	MRC bearing 205-S	B-94912
Key	A-99945	MRC bearing 204-S	(4) B-95767
Spacer	B-60449	MRC bearing 203-S	(2) B-95768
Coupling	B-65145	MRC bearing 205-SZ	B-95769
Bearing spacer	B-65161	MRC bearing 206-S	B-99964
Spacer	B-95779	SKF nut	N-03
Spacer	B-95780	SKF nut	N-06
Bearing spacer	B-95781	SKF washer	W-03
Gear stud	B-95782	SKF washer	W-06
Spacer	B-95783	Jergens spring plunger	B-94759
Lever stud	B-95784	Plate	B-68467
Knee	B-95019	Feed shaft	B-99928
		Pivot block	B-101950
		Gear lever	B-101951
		Lever pin	B-106472

Construction Drawing: L-99950

RECORD LOT 426

3-10-P

CARRIAGE APRON

Carriage dial	A-106085	Bushing	B-65319
Carriage apron	L-94820	Spacer	B-65322
Apron cover	L-106083	Dial marker	A-106086
Right side cover	A-94822	Bushing	B-65339
Left side cover	A-94823	Sleeve	B-65340
Cross feed lever	A-94824	Screw	B-65341
Long. feed lever	A-94825	Shift pin	B-65342
Gear shift lever	A-94826	Bearing spacer	B-65352
Worm gear	B-65296	Bushing	B-65387
Feed arrow	B-41719	Bushing	B-65388
Knockout spring	B-31760	Lever guard	B-67045
Feed lever spring	B-31917	Feed lever cam	B-67046
Rev. lever spring	B-31918	Clutch plug	B-69183
Spring	B-45759	Stop screw	A-69817
Stud	B-37754	Spacer	B-70631
Adjusting nut	B-100231	Stop screw roll	A-71323
Spring	B-105547	Bushing	B-73036
Spring	B-52222	Pin	B-81534
Brake valve spring	B-59673	Handle	B-92351
Spacer	B-62521	Knob	B-93655
Triple clutch gear	A-65259	Front gasket	A-94991
Tooth clutch gear	A-96032	Left side gasket	A-94992
Gear shifter stud	B-65275	Right side gasket	A-94993
Bushing	B-65287	Cam shaft	A-94994
Tooth clutch	B-65286	Gear shift cam	A-94995
Pinion shaft	A-105367	Hollow shaft	A-94996
Tooth clutch gear	B-65289	Shaft	A-94997
Clutch bolt nut	B-65293	Handwheel	A-94998
Spacer	B-65295	Clutch bolt	A-95000
Tooth clutch	B-96031	Lever	B-95001
Feed lever plunger	B-65302	Detent holder	B-97382
Gib	B-95855	Brass shoe	#1049
Dial feed plate	B-96127	Brass shoe	#2246
Cap gasket	B-105343	Brass shoe	#2281
Long feed lever rod	B-95138	Brass shoe	#2289
Cap	B-105349		

RECORD LOT 426

3-12-P

CARRIAGE APRON

Dbl. cluster gear	B-65306	Shifter block	B-95003
Dbl. cluster gear	B-65307	Shifter rod	B-95004
Dbl. cluster gear	B-65308	KO rod plug 15/16	B-95005
Idler gear	B-65310	Lever stop	(2) B-95006
Worm	B-65311	CS knockout rod	B-105459
40 T. gear	B-65312	Detent plate	B-95008
Spacer	B-105347	Handwheel shaft	B-106084
Cam spacer	B-95009	Retainer	(2) B-95024
Feed dial	B-95010	Spring	(8) B-95025
Idler gear stud	B-95012	Spacer	(2) B-95026
Sleeve	B-95013	Pin	(4) B-95027
Bearing spacer	B-95014	Cross feed lever rod	B-95028
25 T. gear	B-95015	Reversing gear shaft rod	B-95065
Spacer	B-95016	Pinion sleeve	B-106087
Feed disengage pin	B-105458	Carriage apron top gasket	A-95836
KO rod plug 1-1/16	B-95018	Breather	B-95755
Feed lever stud	B-95019	Clutch bushing	R-96021
Knob	B-95020	Torrington brg. HJ-162412 & IR121612	B-105350
Knock-out button	B-105457	Torrington NTA-1828 brg.	B-96033
Pinion shaft gear	B-95022	Torrington TRC-1828 plate	(?) B-96034
Victor seals #60096	B-95749	MRC bearing 202-S	(2) B-95757
Victor seals #62302	B-95748	MRC bearing 207-S	B-95758
Victor seals #62314	B-95750	MRC bearing R-4	(2) B-95759
Aetna bearing E-7	B-95762	MRC bearing 104-KS	(3) B-95760
Bijur sight gage B-5734	B-95753	MRC bearing 107-KS	B-95761
Bijur KIC-C-2367 lube pump	B-95754	MRC bearing 204-S	(3) B-95767
Drill jig bushing. GA-92	B-95756	Washer	#1066
Jergens #26908 plunger	B-94759	Washer	#1071
Lever stop	B-96137	Bijur B-4067	(2)
Knock-out shim	B-105456	Gits oiler	#302
Spacer	B-106167	Gits oiler	#1220
Chip guard	A-99520	TRA-1423 thrust washer	(2) B-106165
		TRA-1828 thrust washer	(2) B-106166

RECORD LOT 426

Construction Drawings: L-106088, L-106168, L-106169
 Sub-Assemblies: B-95325, B-96536, B-96537

3-12-P

CARRIAGE APRON

Carriage dial	A-102375	Bunting bushing	B-65319
Carriage apron	L-94820	Spacer	B-65322
Apron cover	L-102374	Dial marker	B-102376
Right side cover	A-94822	Bushing	B-65339
Left side cover	A-94823	Sleeve	B-65340
Cross feed lever	A-94824	Screw	B-65341
Long. feed lever	A-94825	Shift pin	B-65342
Gear shift lever	A-94826	Bearing spacer	B-65352
Worm gear	B-65296	Bushing	B-65387
Feed arrow	B-41719	Bushing	B-65388
Knockout spring	B-31760	Lever guard	B-67045
Feed lever spring	B-31917	Feed lever cam	B-67046
Rev. detent spring	B-31918	Clutch plug	B-69183
Clutch spring	B-34684	Stop screw	A-69817
Stud	B-37754	Spacer	B-70631
Adjusting nut	B-100231	Stop screw roll	A-71323
Spring	B-46766	Bushing	B-73036
Spring	B-52222	Pin	B-81534
Spring	B-59673	Handle	B-92351
Spacer	B-62521	Knob	B-93655
Triple cluster gear	A-65259	Front gasket	A-94991
Tooth clutch gear	A-96032	Left side gasket	A-94992
Gear shifter stud	B-65275	Right side gasket	A-94993
Bushing	B-65287	Cam shaft	A-94994
Tooth clutch	B-65286	Gear shift cam	A-94995
Pinion shaft	A-95669	Hollow shaft	A-94996
Tooth clutch gear	B-65289	Shaft	A-94997
Clutch bolt nut	B-65293	Handwheel	A-98229
Spacer	B-65295	Clutch bolt	A-95000
Tooth clutch	B-96031	Lever	B-95001
Feed lever plunger	B-65302	Detent holder	B-97382
Gib	B-95855	Brass shoe	#1049
Dial feed plate	B-96127	Brass shoe	#2246
Bushing	B-102377	Brass shoe	#2281
Long feed lever rod	B-95138	Brass shoe	#2289

RECORD LOT 426

RECORD

3-22-8

Bardons & Oliver, Inc. - Cleveland, Ohio U.S.A. LOT 426

DDIND TO 2-2-84

CARRIAGE APRON

Db1. cluster gear	B-65306	Shifter block	B-95003
Db1. cluster gear	B-65307	Shifter rod	B-95004
Db1. cluster gear	B-65308	KO rod plug 15/16	B-95005
Idler gear	B-65310	Lever stop	B-95006 (2)
Worm	B-65311	CS knockout rod	B-95007
40 T. gear	B-65312	Detent plate	B-95008
Bunting bushing	B-65318	Handwheel shaft	B-102378
Cam spacer	B-95009	Retainer	B-95024 (2)
Feed dial	B-95010	Spring	B-95025 (8)
Idler gear stud	B-95012	Spacer	B-95026 (2)
Sleeve	B-95013	Pin	B-95027 (4)
Bearing spacer	B-95014	Cross feed lever rod	B-95028
25 T. gear	B-95015	Reversing gear shaft rod	B-95065
Spacer	B-95016	Plug	B-95066
Feed disengage pin	B-95017	Carriage apron top gasket	A-95836
KO rod plug 1-1/16	B-95018	Breather	B-95755
Feed lever stud	B-95019	Clutch bushing	R-96021
Knob	B-95020		
Washer	B-95021	Torrington NTA-1828 brg.	B-96033
Pinion shaft gear	B-95022	Torrington TRC-1828 plate	B-96034 (2)
Victor seals #60096	B-95749	MRC bearing 202-S	B-95757 (2)
Victor seals #62302	B-95748	MRC bearing 207-S	B-95758
Victor seals #62314	B-95750	MRC bearing R-4	B-95759 (2)
Aetna bearing E-7	B-95762	MRC bearing 104-KS	B-95760 (3)
Bijur sight gage B-5734	B-95753	MRC bearing 107-KS	B-95761
Bijur KIC-C-2367 lube pump	B-95754	MRC bearing 204-S	B-95767 (3)
Drill jig bushing. GA-92	B-95756	Washer	#1066
Jergens #26908 plunger	B-94759	Washer	#1071
Lever stop	B-96137	Bijur B-4067	(2)
Tooth clutch w/40T. gear	B-96536	Gits oiler	(2)
Tooth clutch w/23T. gear	B-96537		
Chip guard	A-99520		

Construction Drawings: L-104592, L-104593, L-104594

RECORD LOT 426

RECORD LOT 426 3-12-0

Bardons & Oliver, Inc. - Cleveland, Ohio U.S.A.

DOING TO 2304

CARRIAGE APRON

Carriage dial	A-95668	Bushing	B-65319
Carriage apron	L-94820	Spacer	B-65322
Apron cover	L-94821	Dial marker	B-65334
Right side cover	A-94822	Bushing	B-65339
Left side cover	A-94823	Sleeve	B-65340
Cross feed lever	A-94824	Screw	B-65341
Long. feed lever	A-94825	Shift pin	B-65342
Car shift lever	A-94826	Bearing spacer	B-65352
Arm gear	B-65296	Bushing	B-65387
Lead arrow	B-41719	Bushing	B-65388
Knockout spring	B-31760	Lever guard	B-67045
Feed lever spring	(2) B-31917	Feed lever cam	B-67046
Rev. lever spring	B-31918	Clutch plug	B-69183
Spring	B-34684	Stop screw	A-69817
Stud	B-37754	Spacer	B-70631
Adjusting nut	B-100231	Stop screw roll	A-71323
Spring	B-105547	Bushing	B-73036
Spring	(6) B-52222	Pin	B-81534
Brake valve spring	B-59673	Handle	B-92351
Spacer	(2) B-62521	Knob	B-93655
Triple cluster gear	A-65259	Front gasket	A-94991
Tooth clutch gear	A-96032	Left side gasket	A-94992
Gear shifter stud	B-65275	Right side gasket	A-94993
Bushing	B-65287	Cam shaft	A-94994
Tooth clutch	B-65286	Gear shift cam	A-94995
Pinion shaft	A-105367	Hollow shaft	A-94996
Tooth clutch gear	B-65289	Shaft	A-94997
Clutch bolt nut	(2) B-65293	Handwheel	A-94998
Spacer	(2) B-65295	Clutch bolt	A-95000
Tooth clutch	B-96031	Lever	B-95001
Feed lever plunger	(2) B-65302	Detent holder	B-97382
Gib	B-95855	Brass shoe	#1049
Dial feed plate	B-96127	Brass shoe	#2246
Cap gasket	B-105348	Brass shoe	#2281
Long feed lever rod	B-95138	Brass shoe	#2289
Cap	B-105349		(6)

RECORD LOT 426

3-12-P

CARRIAGE APRON

Dbl. cluster gear	B-65306	Shifter block	B-95003
Dbl. cluster gear	B-65307	Shifter rod	B-95004
Dbl. cluster gear	B-65308	KO rod plug 15/16	B-95005
Idler gear	B-65310	Lever stop	B-95006
Worm	B-65311	CS knockout rod	B-95007
40 T. gear	B-65312	Detent plate	B-95008
Spacer	B-105347	Handwheel shaft	B-
Cam spacer	B-95009	Retainer	(2) B-95024
Feed dial	B-95010	Spring	(8) B-95025
Idler gear stud	B-95012	Spacer	(2) B-95026
Sleeve	B-95013	Pin	(4) B-95027
Bearing spacer	B-95014	Cross feed lever rod	B-95028
25 T. gear	B-95015	Reversing gear shaft rod	B-95065
Spacer	B-95016		
Feed disengage pin	B-95017	Carriage apron top gasket	A-95836
KO rod plug 1-1/16	B-95018	Breather	B-95755
Feed lever stud	B-95019	Clutch bushing	A-96021
Knob	(2) B-95020	Torrington brg. HJ-162412 & IR121612	B-105350
		Torrington NTA-1828 brg.	B-96033
Pinion shaft gear	B-95022	Torrington TRC-1828 plate	(2) B-96034
Victor seals #60096	B-95749	MRC bearing 202-S	(2) B-95757
Victor seals #62302	B-95748	MRC bearing 207-S	B-95758
Victor seals #62314	B-95750	MRC bearing R-4	(2) B-95759
Aetna bearing E-7	B-95762	MRC bearing 104-KS	(3) B-95760
Bijur sight gage B-5734	B-95753	MRC bearing 107-KS	B-95761
Bijur KIC-C-2367 lube pump	B-95754	MRC bearing 204-S	(3) B-95767
Drill jig bushing. GA-92	B-95756	Washer	#1066
Jergens #26908 plunger	(4) B-95759	Washer	#1071
Lever ston	B-94759	Bijur B-4067	(2)
	B-96137	Gits oiler	(2) #302
Chip guard	A-99520		

Construction Drawings: L-105564, L-105565, L-105566
 Sub-Assemblies: B-95325, B-96536, B-96537

RECORD LOT 426

TURRET SLIDE & SADDLE

Hex turret cover	B-42668	Steelway screw	(12)	B-42367
Lockbolt lever	B-62938	Bevel gear		B-43630
Tumbler	A-62940	Lockbolt bushing	(6)	B-47906
Slide	L-74319	Oil plug		B-58855
Clamp ring	A-74321	Right taper gib		B-59747
(Machining procedure)	A-84562	Left taper gib		B-59748
Hex turret	L-99923	Right front gib		B-59749
Pawl (replaces B-62939)	B-102149	Saddle way - rear		A-59751
Saddle (replaces L-99922)	L-106469	Saddle way - front		B-59752
-For W & S Tools-		Rack		A-59753
Spl. hex turret	A-99925	Slide cap - right front		B-59754
Pawl & pivot sub-assy'	A-59187	Slide clamp cap - middle		B-59755
Lockbolt center dimensions	A-65243	Slide cap - left front		A-59757
Turret clamp construction	A-74328	Saddle cap - rear		A-59759
Index motions	A-74335	Block		B-59760
Turret clamp assembly instr.	A-83197	Ind. stop shaft		B-59764
Stop screw carrier nut	B-12004	Stop rod		B-59765
Knockout spring	B-31760	Shaft collar		B-59766
Turret bevel gear	B-34166	Clamp nut		B-59767
Lever roller	B-34177	Stop screw	(6)	B-59769
Lever washer	B-34178	Bevel gear nut		B-59773
Lockbolt spring	B-34179	Gib screw	(2)	B-60136
Pawl pivot	B-34184	Saddle way - front		A-60721
Pawl spring	B-39246	Stop		B-62194
Locating ring	A-41138	Lockbolt		B-62326
Chip guard	B-41820	Left front gib		B-63016
Chip guard support	B-41825	Lever washer		B-63347

Construction Drawings: L-106519, L-106520, L-106521

P/L No. 10643

TURRET SLIDE & SADDLE

Turret clamp	A-74321	Lever roller	B-34177
Turret cover	B-42668	Lever washer	B-34178
Hex. turret	A-99923	Lock bolt spring	B-34179
Slide	L-74319	Pawl pivot	B-34184
Saddle	L-99922	Pawl stop pin	B-34185
Tumbler	A-62940	Spacer	B-72326
Lockbolt lever	B-62938	Locating pin	B-65368
Pawl	B-102149	Binder bolt	B-99927
Spring retainer	B-70942	Locating ring	A-41138
Tumbler seat	B-71971	Chip guard	B-41820
Stop scr. carrier	B-70536	Chip guard support	B-41825
Stop scr. carrier nut	B-12004	Guard	B-74327
Knock out spring	B-31760	Steel way screw	B-42367
Knock out rod plug	B-80810	Bevel gear	B-43630
Patchet	B-75553	Lever washer	B-63347
Turret bevel gear	B-34166	Lockbolt bushing	B-47906
Clamp stud	B-74296	Oil plug	B-58855
Washer	B-74302	Taper gib	B-59747
Set screw block	B-74303	Taper gib	B-59748
Clamp ring locator	B-77660	Straight gib	B-59749
Jam nut	B-80811	Left front gib	B-63016
Release trip	B-74323	Pawl spring	B-39246
Clamp release	B-74324	Binder hub	B-92239
Lock bolt sleeve	B-70941	Binder handle	B-92325
Link	B-74325	Binder handle	B-92351
Lever pin	B-65416	Saddle way-rear	A-59751

RECORD LOT 426

Sheet 1 of 2

3-13-P

Construction Drawings: L-74334, L-99921, A-74328, A-83197

TURRET SLIDE & SADDLE

Saddle way - front	B-59752	Lockbolt centers	A-65243
Rack	A-59753	Turret for B&O tools	A-99924
Slide cap - front	B-59754	Turret for W&S tools	A-99925
Slide clamp cap	B-59755	Bushing	B-103146
Slide cap - rear	A-74322	Spring bolt	B-102973
Slide cap - front	A-59757	Lock screw	B-95914
Saddle cap - front	A-99926	Spring	B-105038
Saddle cap - rear	A-59759	Brass shoe	2261
Block	B-59760	Brass shoe	2253
Ind. stop shaft	B-59764	Dovel pin	299
Stop rod	B-59765	Soft pin	370
Stop shaft collar	B-59766	Washer	1053
Clamp nut	B-59767	Washer	1066
Tumbler screw	B-104523	Washer	1069
Stop screw	B-59769	Washer	1071
Knock out rod	B-95169	Brass shoe	1146
Clamp stud	B-95170	Plug	2247
Bevel gear nut	B-59773	Plug	2313
Gib screw	B-60136	Pin	2317
Saddle way - front	A-60721	Brass shoe	2254
Stop	B-62194	Eaton snap ring	309
Lock bolt	B-62326	Gits oiler	502
Spacer	B-95739	Gits oiler	503
Latch pivot	B-63543	Timken brg. cone #387	B-100376
Latch	B-63544	#3 Precision	
Ratchet pin	B-64964		

FOR TURRET SLIDE & SADDLE WITHOUT SADDLE APRON

Pinion shaft	B-34541	With Bijur lubricator	B-73928
Pinion shaft washer	B-34542	Bracket	A-81026
Turnstile sleeve	B-66587	Front cover	LBK-2036
Slide cap - front	B-66588	Bijur lubricator	#502
Slide cap - front	A-78004	Gits - oiler	#503
Slide cap - rear		Gits - oiler	

TURRET SLIDE & SADDLE (Cont.)

Locating pin	(2)	B-65368	Front saddle cap		A-99926
Lever pin		B-65416	Binder bolt	(6)	B-99927
Stop screw carrier		B-70536	Timken bearing cone		B-100376
Lockbolt sleeve		B-70941	#3 Precision		
Spring retainer		B-70942	Spring bolt		B-102973
Tumbler seat		B-71971	Brz. bushing		B-103146
Clamp stud		B-74296	Tumbler pin		B-104523
Washer		B-74302	Spring		B-105038
Set screw block		B-74303	Latch pivot		B-106522
Slide cap - rear		A-74322	Dowel pin 1/8x $\frac{1}{4}$	(2)	#299
Release trip		B-74323	Soft pin 3/16x1"		#370
Clamp release		B-74324	Washer	(4)	#1053
Link		B-74325	Washer		#1066
Spacer		B-74326	Washer	(6)	#1069
Guard		B-74327	Washer	(2)	#1071
Ratchet		B-75553	Brass shoe $\frac{1}{2}$ x $\frac{1}{4}$	(2)	#1146
Clamp ring locator	(2)	B-77660	Brass shoe $\frac{1}{2}$ x3/8	(6)	#2247
Knockout rod plug		B-80810	Pin 1/8x $\frac{1}{4}$	(2)	#2317
Jam nut		B-80811	Brass shoe 5/16x $\frac{1}{4}$		#2253
Binder hub		B-92239	Brass shoe 5/16x3/8	(2)	#2254
Binder handle rod		B-92325	Brass shoe 3/16x5/16	(6)	#2261
Binder handle		B-92351	S.H.C.S. 5/16x3/4"Lg.	(2)	
Knockout rod		B-95169	S.H.C.S. 5/16x1"Lg.	(8)	
-when stock is depleted, replace with			S.H.C.S. 5/16x1 $\frac{1}{4}$ "Lg.	(4)	
B-105456, B-105457, B-106470-			S.H.C.S. 3/8x1"Lg.	(4)	
Clamp stud		B-95170	H.H.C.S. 5/16-24NFx5"Lg.	(24)	
Latch		B-95516	H.H.C.S. 7/16x1 $\frac{1}{4}$ "Lg.	(16)	
Lockscrew		B-95914	H.H.C.S. $\frac{1}{2}$ x1 $\frac{1}{4}$ "Lg.		

TURRET SLIDE & SADDLE (Cont.)

B.H.S.C.S. 10-24x3/8	(3)	Taper pin #1x1"Lg.	
B.H.S.C.S. 1/4 x 1/2		Taper pin #2x1 1/4"Lg.	
B.H.S.C.S. 1/4 x 5/8		Taper pin #3x1"Lg.	
B.H.S.C.S. 3/8 x 1/2		O-Ring PRP-568-111	(5)
Fl. hd. mach. screw 10-24x 1/2	(3)	O-Ring PRP-568-010	
Cup pt. S.S.S. 10-1/2		Flexloc 30FK-1018	
Fl. pt. S.S.S. 3/8 x 1/2		Flexloc 20FC-524	
Fl. pt. S.S.S. 3/8 x 5/8	(2)	Flush type soc. pipe plug 1/16NPT (11)	
Fl. pt. S.S.S. 3/8 x 1 1/4	(6)	Roll pin 1/8 x 3/4"Lg.	(3)
Fl. pt. S.S.S. 1/4 x 3/8	(2)	Roll pin 1/4 x 1	
Fl. pt. S.S.S. 1/4 x 3/4		-supersedes B-34185-	
1/2 dog pt. S.S.S. 5/16x3/8	(2)	Gits - oiler	#502
Fl. pt. S.S.S. 5/8-18NFX1"	(2)	Gits - oiler	#503
Socket jam screw 1/4-20	(6)	-For T S & S Without S.A.-	
Socket jam screw 3/8-16	(2)	Turnstile sleeve	B-34542
Hex nuts Grd.8 5/8-18NF	(6)	Pinion shaft washer	B-34541
Dowel pin 3/16 x 1/2	(2)	Slide cap - front	B-66587
D.P. 1/4 x 5/8	(2)	Slide cap - front	B-66588
D.P. 1/4 x 1"		Slide cap - rear	A-78004
D.P. 1/4 x 1 1/4	(2)	Pinion shaft	
Dowel pin 5/16x5/8	(3)	Woodruff key #13	
D.P. 5/16 x 3/4		Jam nut 5/8-11	
D.P. 5/16 x 7/8	(2)	Gits - oiler	#501
-Replaces B-64964 after stock is depleted-	(2)	Gits - oiler	#502
D.P. 5/16 x 1 1/4		-with Bijur lubricator-	
Eaton snap ring #309		Bracket	B-73928
Woodruff key #6		Front cover	A-81026
		Bijur lubricator	LBK-2036

NOTE: Saddle must be threaded 2" - 12P
to accept turnstile sleeve B-34542

SADDLE APRON

Dial	A-95129	Pinion shaft	A-100092
Feed lever	A-94830	Tooth clutch	B-96031
Seal retainer	B-95139	Tooth clutch	B-65824
Apron	L-95728	Gear	B-95730
Apron cover	A-94828	Rear cover	B-65834
Left side cover	A-96025	Rear gasket	B-65836
Turnstile lseeve	A-94831	Lever guard	B-67045
Right side cover	A-96024	Feed lever cam	B-67046
Top cover	A-95422	Clutch plug	B-69183
Worm gear	B-65296	Bushing	B-73036
Lever	A-98921	Handle	B-92351
Lever	B-65803	Knob	B-93655
Triple cluster gear	A-65808	Lever stop	B-95006
Cam	A-69916	Cam spacer	B-95009
Cam shaft	A-94994	Feed lever stud	B-95019
Front gasket	A-95122	Knob	B-95020
Chip guard	A-99520	Retainer	B-95024
Left side gasket	A-96064	Spring	B-95025
Right side gasket	A-96065	Spacer	B-95026
Hollow shaft	A-95125	Pin	B-95027
Shaft	A-95126	Gasket	B-95130
Clutch bolt	A-95127	Feed dial	B-95131
Feed arrow	B-42100	Dial feed plate	B-95132
Spring	B-31917	Detent plate	B-95133
Spring	B-52222	Spacer	B-95134
Spacer	B-62521	Bearing spacer	B-95135
Clutch bolt nut	B-65293	Spacer	B-95136
Double cluster gear	B-65306	Bearing spacer	B-95137
Double cluster gear	B-65307	Long. feed lever rod	B-95138
Double cluster gear	B-65308	Top gasket	B-95731
Worm	B-65311	Turnstile hub	B-100091
Spacer	B-65322	Turnstile handle	B-95141
Dial marker	B-65334	Plug	B-95837
Sleeve	B-65340	Arrow breather vent ASP-4BV	B-95755
Screw	B-65341	Lever stop	B-96138
Shift pin	B-65342	Clutch bushing	B-97309
Bushing	B-65386	Feed lever plunger	B-65822
		Lever screw	B-65817

SADDLE APRON (CONT.)

Victor seal #62302		B-95748
J.M. hat gasket #9846		B-95752
Bijur KIC-C-2367 lube pump		B-95754
Bijur sight gage B-5734		B-95753
Jergens plunger #26908		B-94759
Drill jig bushing GA-92		B-95756
Aetna bearings E-7	(2)	B-95762
MRC bearing 207-S		B-95758
MRC bearing R-4	(2)	B-95759
MRC bearing 104-KS	(2)	B-95760
MRC bearing 107-KS		B-95761
MRC bearing 204-S	(2)	B-95767
Brass shoe		1049
Brass shoe		1066
Gits oiler	(2)	302
Brass shoe		2246
Brass shoe		2281

Construction Drawings: L-95142, L-95143

COOLANT PUMP & PIPING

Gusher coolant pump		B-106208
½ x 9"Lg. - Type F2		
American Flexible hose		B-102852
½ x 12"Lg. - Type F2		
American Flexible hose		B-101027
Parker 360 swivel adapter		
#52202-8-8 ½NPT	(4)	B-97341
Apollo ball valve		
½NPT #70-103-01	(2)	B-94875
½ x 3"Lg. Standard pipe	(2)	
½ x 12"Lg. " "	(2)	
½ x 18"Lg. " "		
¾ x 3"Lg. " "		
FLODAR		
Street elbow PF 201-8	(5)	
Female tee PF-31-8		
Hex. nipple PF 10-12-8		
45 deg. elbow		
WEATHERHEAD		
¾ ID x 42"Lg. Hose		
Cat. #H-10112		
¾ Push On Cat.		
Cat. #10012B-112	(2)	
¾ 90 deg. elbow		
Cat. 9405X12X2		
Swivel adapter		
¾ x ¾"Lg. Hex. Head Cap Screw		

Construction Drawing: L-106632

P/L No. 10658

COOLANT PUMP & PIPING

Gusher coolant pump Model 9050	B-97122	Parker swivel adapter	(4)	B-97341
Ball valve	(2) B-94875	American flexible	(2)	B-102852
BA-1000-12 (Flodar)		Coolant line with male		
BA-1100-12 (Flodar)		Coupling and open nozzle		

Construction Drawing: L-100003

RECORD LOT 426-9

3-15-P

2" CAP. - BAR FEED

Rear brg. closer	A-70147	Chain extension	(2)	B-96106
Lever	B-70163	Idler shaft		B-96108
Rear stand	A-101667	Sprocket guard		A-96104
Center stand	L-101688	Drive shaft		B-96109
Suppt. tube brkt.	A-100065	Chain guard		B-96111
Sliding head	A-100066	Revolving head		A-100069
Bracket	A-103596	Chuck guard		A-100070
Front stand	L-100068	Sprocket guard		A-103610
Chuck jaws	B-36017	Spacer		A-100073
Chuck screw	B-36018	Chuck plate		B-36028
Revolving hd. sleeve	A-66303	Air valve		B-96503
Front brg. closer	A-66304	14T sprocket	(2)	B-96129
End brg. spacer	B-66313	Pillow block	(4)	B-96130
Inner brg. spacer	B-66315	Coupling		B-96131
Support tube	B-69145	Air motor		B-96132
Collar	B-69146	MRC brg. 114-KS	(2)	B-100377
Pin	B-69148	#40-1/2 P roller chain		B-106898
Bar	B-70187	Connecting link		B-106899
Stand hd. washer	B-70191	Offset link		B-106900
Center plug	B-83717	Washer	(8)	#40-1/4P
Handle	B-93655	Washer	(4)	#105C
Motor bracket	B-96105			#105B
Inner sleeve #2	A-95691			
Inner sleeve #3	A-95692			

(1 pr.)

(2)

Construction Drawings: L-100074, L-100075

BAR FEED

Rear bearing closer	A-70147	Chain extension	(2)	B-96106
Lever	B-70163	Roller chain bracket	(2)	B-96107
Rear stand	A-101687	Idler shaft		B-96108
Center stand	L-101688	Sprocket guard		A-96104
Support tube bracket	A-100065	Drive shaft		B-96109
Sliding head'	A-100066	Chain guard		B-96111
Bracket	A-103596	Revolving head		A-100069
Front stand	L-100068	Chuck guard		A-100070
Chuck jaws	B-36017	Sprocket guard		A-103610
Chuck screw	B-36018	Chuck plate		A-100073
Revolving head sleeve	A-66303			B-36028
Front bearing closer	A-66304			
End bearing spacer	B-66313	14T. sprocket	(2)	B-96129
Inner bearing spacer	B-66315	Pillow block	(4)	B-96130
Support tube	B-69145	Coupling		B-96131
Collar	B-69146	Air motor		B-96132
Pin	B-69148	MRC bearing 114-KS	(2)	B-100377
Bar	B-70187	Detachable roller chain-		#40-1/2 P. x
Stand head washer	B-70191	single width		141 in. Lg.
Center plug	B-83717	Roller chain-single		#40-1/2 P.
Handle	B-93655	width connecting link	(2)	1056
Motor bracket	B-96105	Washer	(8)	
Inner sleeve No. 2	A-95691			
Inner sleeve No. 3	A-95692			

SQUARE TURRET

Binder lever	B-42144	Indexing plate	B-43646
Base	A-58493	Center stud	B-43648
Lockbolt lever	B-63351	Center bushing	B-51196
Lockbolt cam	B-63352	Center sleeve	B-51197
Lockbolt bushing	B-32046	Square turret	A-56325
Lockbolt spring	B-32049	Pivot screw	B-58482
Screw plug	B-32055	Tumbler plunger	B-58483
Lockbolt	B-34234	Tumbler	A-61146
Lockbolt sleeve	B-34235	Tee nut	B-63945
Bottom plate	B-34243	Spring	B-73527
Binder lever collar	B-34248	Spring	2075
Spring plunger	B-34249	Gits oiler	B-95803
Lever shaft	B-42145	Set screw	2072
Lever bushing	B-42146	Plug	2397
Lever collar	B-42147		
Lever collar	B-42148		
Bakelite ball	B-42149		
		(2)	
		(2)	
		(2)	
		(12)	
		(2)	

(4)

Construction Drawing: A-58574

3-17-P

REAR TOOL POST

Body		B-43583
Wedge	(2)	B-34407
Tee nut		B-63945
Sq. hd. set screw	(2)	2081

Construction Drawing: A-43582

FRONT TOOL POST

Body		A-43584
Wedge	(2)	B-34407
Tee nut	(2)	B-63945
Sq. hd. set screw	(2)	2081

Construction Drawing: A-43584

3-19-P

CROSS SLIDE TAPER ATTACHMENT

Base	A-34811
Tool slide taper gib	B-34813
Swivel slide taper gib	B-34814
Yoke	B-34819
Tool slide	A-63199
Gib screw	B-34399
Follower	B-34815
Spacer	B-84883
Swivel slide	A-34816
Swivel plate	B-34817
Tool slide stud	B-34821
Swivel stud	B-34822
Bracket	B-102118
Tee nut	B-63945
Stud	B-97265
Washer	1068
Sq. head set screw	2072

Construction Drawing: L-34520

3-20-P

S.C.A.

Bracket
Lg. fd. lever
Lever (#4 UTL only)
Leader
Leader nut
Spring
Leader bushing
Follower
Follower rack
Closer
Disengage block
Pin
Kickout plunger
Spacer
Lever

A-71286
A-71859
B-71288
A-71289
B-32079
B-48061
B-71290
B-71291
A-71292
B-71293
B-71294
B-71306
B-71297
B-102953
B-102209

Stop lever
Knock out adjustment
Bushing
Knock out rod
Lever catch
Detent
Knock out rod plunger
Lever rod
Lever pivot
Pinion shaft
Kickout plun. spring
Cover
Spring
Knob
Gits oiler

B-71298
B-71299
B-71301
B-71302
B-71303
B-71304
B-71305
B-95810
B-71307
B-71858
B-52312
B-71319
B-56121
B-95020
#2201

Construction Drawing: L-71300

3-21-P

TURRET LEADING ATTACHMENT

Follower bracket	A-99435	Coupling	B-71526
Follower bracket cover	A-99436	Closer	B-71528
Leader	A-99437	Spring retainer	B-71530
Splined shaft	A-99438	12T gear	B-71531
Spacer	A-99439	Collar	B-71532
Cover	B-99440	Cover	B-71534
Gits oiler	502	Feed lever plunger	B-71536
Gear housing	L-97769	Eccentric pin	B-71539
Lever bracket	A-100333	42T gear	B-71540
Lever	A-97772	36T gear	B-71541
Spacer	A-97773	Rack	B-71542
Right side cover	A-97774	Roller	B-71543
Bearing closer	B-97775	Cover	B-71545
Spring	B-91317	Cam	A-71547
Spring	B-52222	Bushing	B-73454
Follower	A-71511	Spring	B-79065
Feed screw gear	B-71513	Shear pin	B-83937
Bearing closer	B-71514	Feed lever stud	B-95019
Washer	B-71515	Knob	B-95020
Bushing	B-71518	Seal spacer	B-97779
Washer	B-71520	Shift rod	B-97780
Spacer	B-71521	32T gear	B-97781
30T gear	B-71522	8T pinion	B-97782
Splined shaft	B-71523	Long. feed lever rod	B-71535
20T gear	B-71525	Gear stud	B-97784
MRC bearing 104-KS	B-95760	Closer gasket	B-97785
MRC bearing 107-KSF	B-104877	Cover gasket	A-97786
MRC bearing 203-S	B-95768	Apron gasket	A-97787
Bunting bushing	NL-1216-8	Washer	1721
Bunting bushing	NL-1216-10	Garlock seal 92 x 7518	B-95748
Spring	B-48009	Gits oiler	501
Binder hub	B-104964	Brass shoe	2246
Binder handle	B-104965	Brass shoe	2281
		Feed shaft	B-100341
		Stop	B-100594

Construction Drawings: L-97789, L-97792, L-97793

Chuck Guard

Knob
Hood
Guard
Washer

B-84088
A-101034
A-101035
C-1054

(2)

Construction Drawing: L-101033

3-23-P

2" W & S COLLET

Spl. collet
Spl. collet hood
False jaw screw

(3)

A-71060
A-94419
B-71063

Construction Drawing: A-100937

3-24-P

ADJ. SPINDLE BACK STOP

Adj. stop
Guard
Adapter
Sleeve

A-103327
A-103328
B-97001
B-97002

Construction L-103326

10" SP HYD POWER CHUCK

A-105285
A-105279
A-105280
A-105281
A-105282
A-105286
A-105287
A-105288
B-105255

Bracket
Adapter
Draw tube
Cylinder guard
Anti-rotation bracket
Inner sleeve No. 2
Inner sleeve No. 3
Draw tube adapter
Polypac power unit
A-B pressure sw. 836 C9A
35-375 PSI
S-P 10"-3 jaw model 10CC-300
Power chuck S-P E-3747 w/
Draw cam coupler C-17583
S-P 8 RHC 8" thru-hole rot.
Hyd. cyl. S-P E-3947
S-P 10CC-355-A collet jaws
S-P 10CC-355-B collet jaws
S-P 10CC-355-C collet jaws
S-P 10CC-355-D collet jaws
S-P 10CC-345-X hard serr.
Inserts

Foundation Drawing A-105283
Hydraulic Diagram B-105256
Construction Drawing L-105284