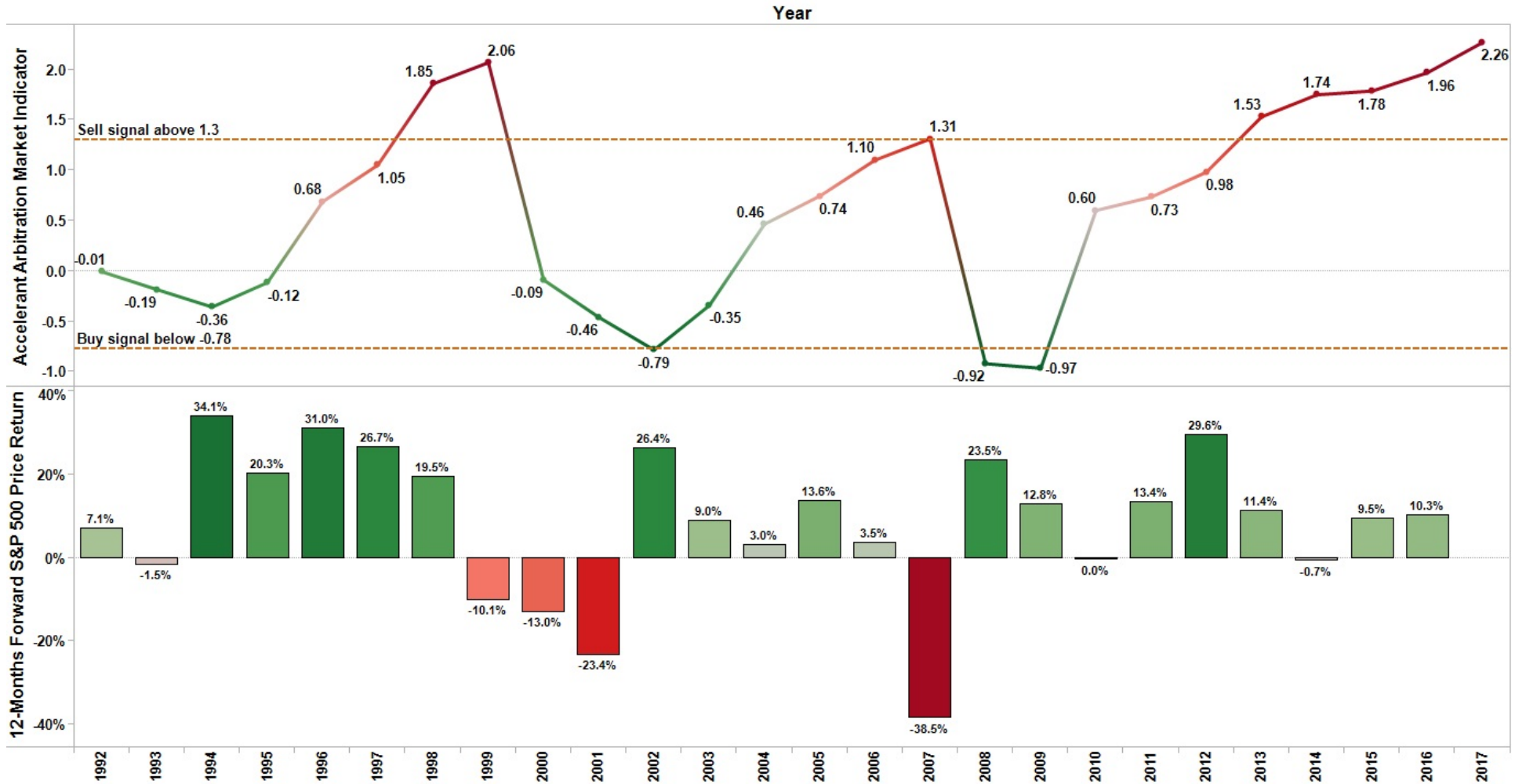


# The Accelerant Arbitration Market Indicator

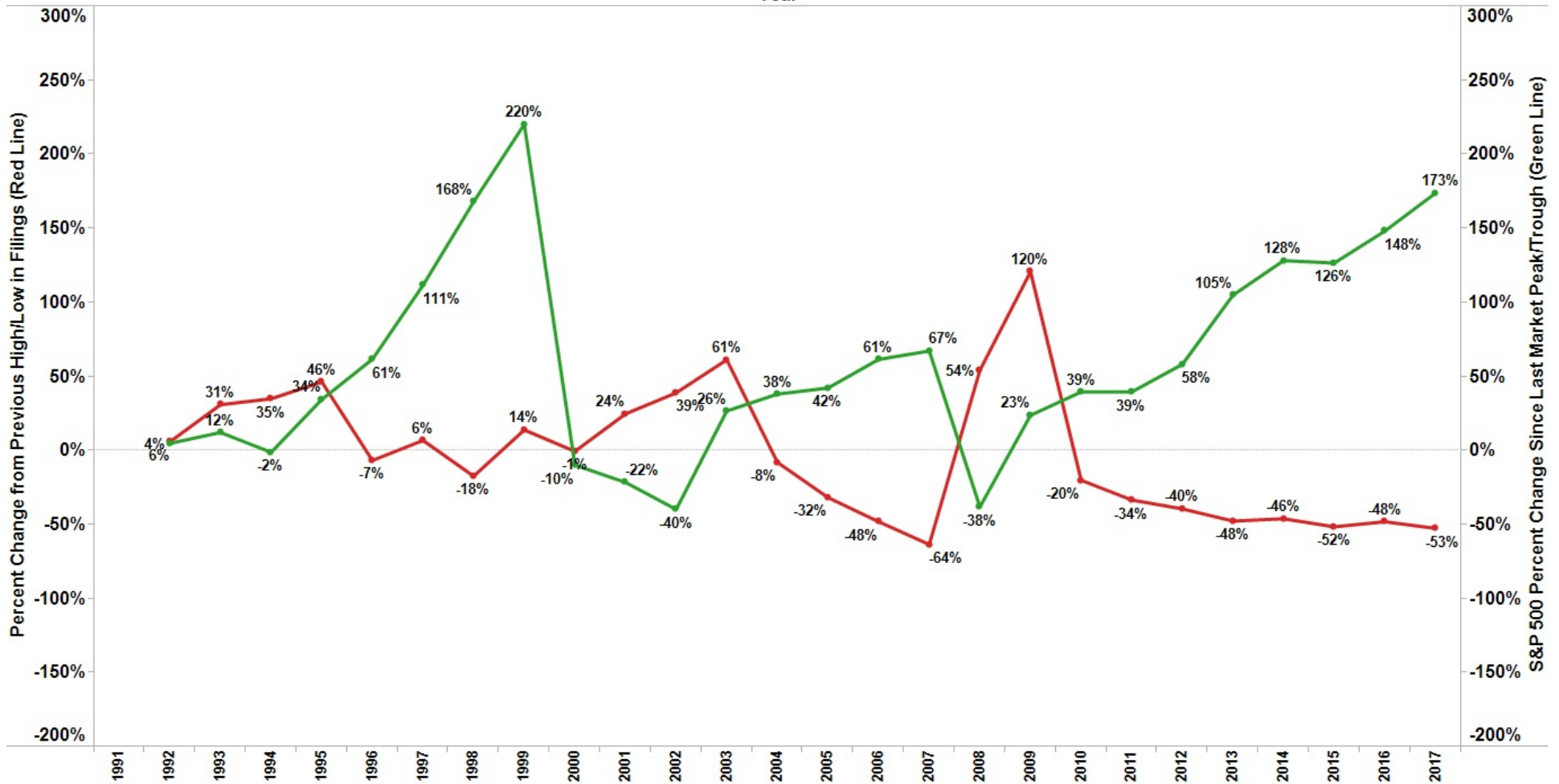


The AAMI is the difference between the percentage change in the S&P 500 Price Index since the last peak/trough and the percentage change in the number of FINRA arbitration claims since the last peak/trough. S&P 500 price data through July 2017, FINRA arbitration case filing data through July 2017.



# FINRA Arbitration Claims v. S&P 500 Price Index

Year



S&P 500 price data through July 2017, FINRA arbitration case filing data through July 2017.

**Measure Names**

- S&P 500 % Change Since Last Market Peak/Trough
- FINRA Arbitration Claims % Change from Previous High/Low in Filings