



What is LinkedIn? Join Today Sign In

Display KPI Widgets in the Cockpit

Published on July 5, 2015



ari schapira | Follow
Director Product Management at SAP



18



0

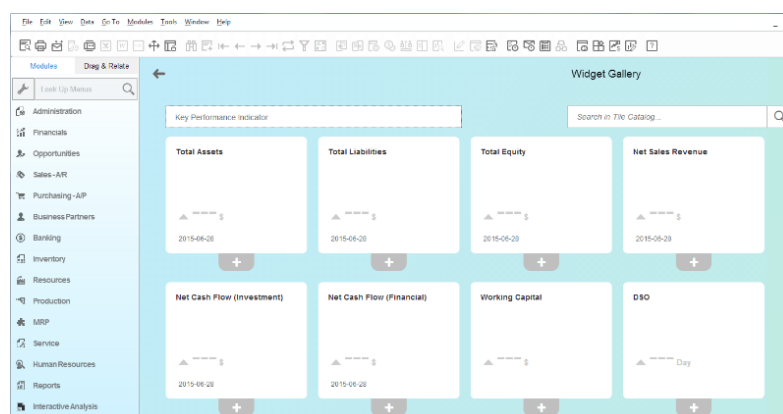


0

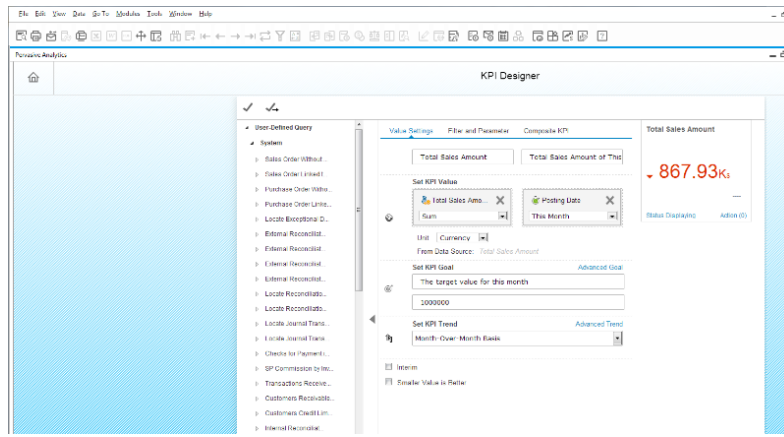
The power of SAP HANA is at the tip of your fingers! within just few clicks you can visualize the total sales, top 5 customers, and more data that reflects your business activities.

SAP Business One, version for SAP HANA provides you pre-defined KPI widgets and enables you design your own KPI widgets by yourself.

What does it take? First, select the required widget in the widget gallery:

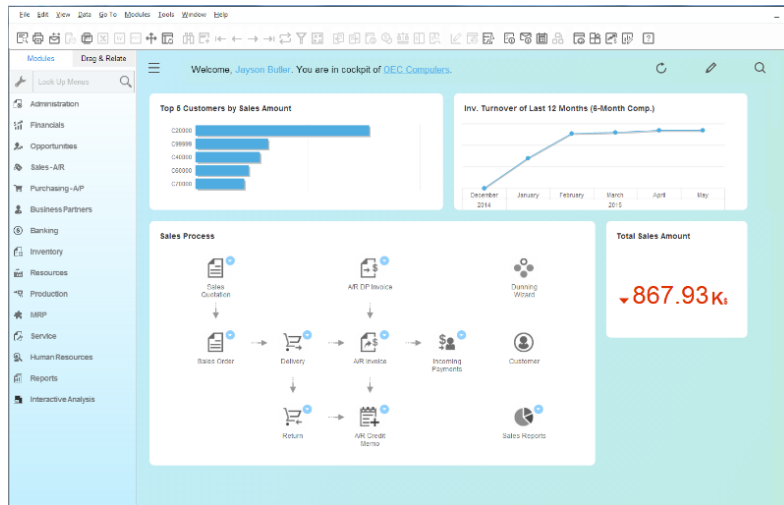


Set the parameters based on your business activity:



and this is done!

What is LinkedIn? Join Today Sign In



Available since SAP Business One 9.1 PL 05, version for SAP HANA



Tagged in: [tip](#), [sap business one](#)



ari schapira
 Director Product Management at SAP
 86 articles

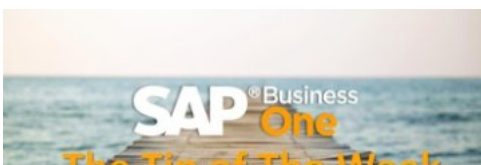
Follow

0 comments



Sign in to leave your comment

Don't miss more articles by ari schapira



Looking for more of the latest headlines on LinkedIn?

Discover more stories

[Sign up](#) | [Help Center](#) | [About](#) | [Careers](#) | [Advertising](#) | [Talent Solutions](#) | [Sales Solutions](#) | [Small Business](#) | [Mobile](#) | [Language](#) | [SlideShare](#) | [Online Learning](#)
[LinkedIn Updates](#) | [LinkedIn Influencers](#) | [Search Jobs](#) | [Directories](#) | [Members](#) | [Jobs](#) | [Pulse](#) | [Topics](#) | [Companies](#) | [Groups](#) | [Universities](#) | [Titles](#) | [ProFinder](#)
© 2017 | [User Agreement](#) | [Privacy Policy](#) | [Community Guidelines](#) | [Cookie Policy](#) | [Copyright Policy](#) | [Unsubscribe](#)

[What is LinkedIn?](#) | [Join Today](#) | [Sign In](#)