



Newsletter Vol. 61 - Introduction

Softengine News is dedicated to keeping you up to date with the latest information regarding SAP Business One systems, Softengine solutions and Best Business Practices.

What's New?

Spotlight on Product: New Softengine Connector for SAP Business One – ADP and Paychex Payroll



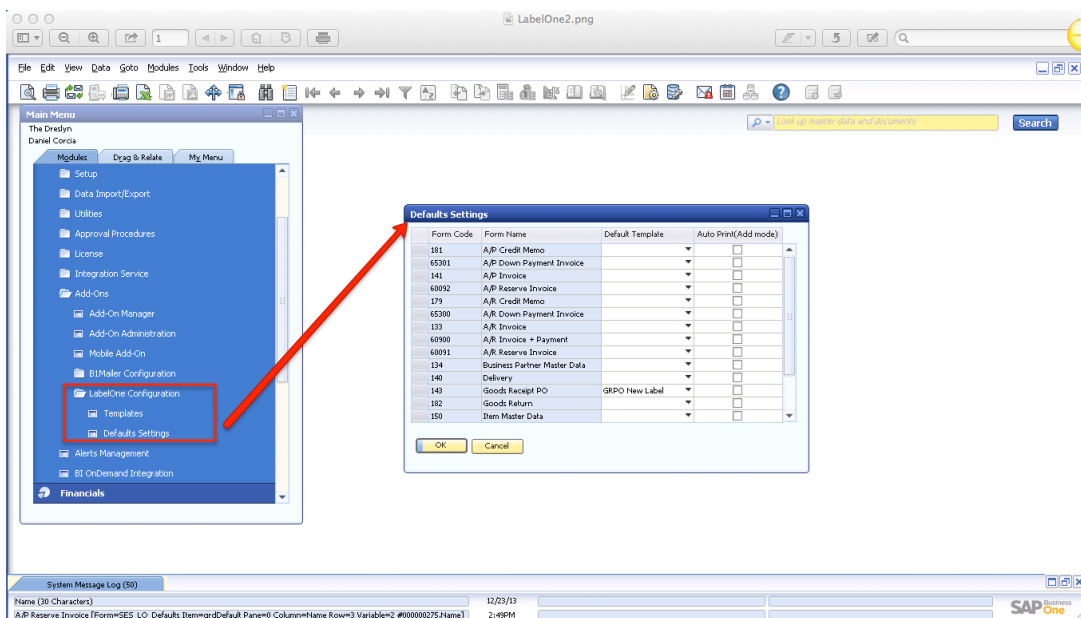
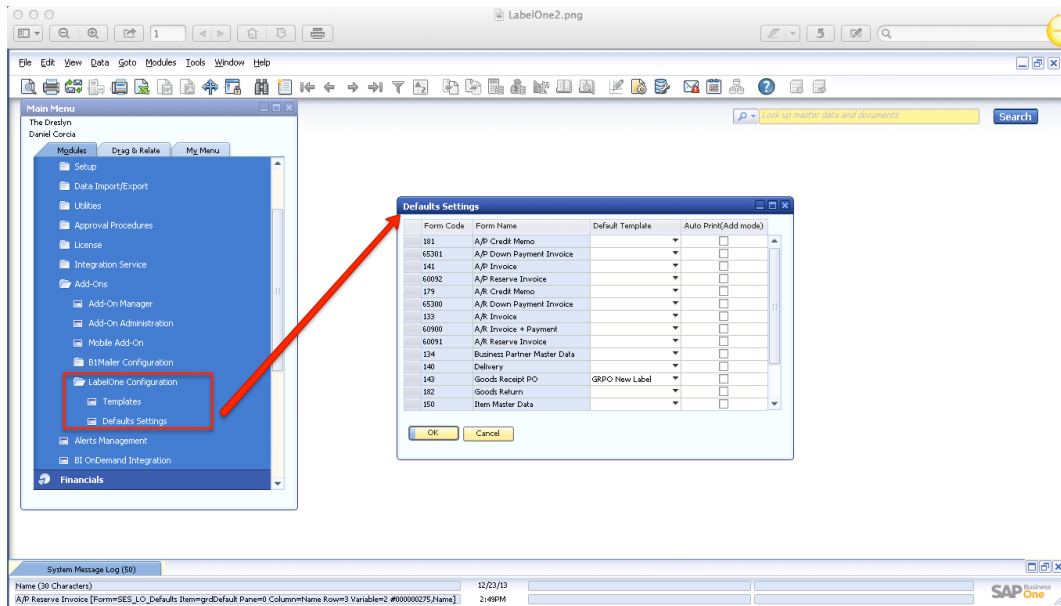
By connecting with ADP's and Paychex payroll, SAP Business One users will be able to achieve automated integration. The information imported through the integrated solution becomes available for financial statement processing and analysis, enabling smarter business decisions driven by an integrated, easy-to-use business software solution. The ADP/Paychex Connector imports journal voucher transactions in to SAP Business One. It also validates the data, i.e. correct General Ledger Accounts.

| Import Journal Vouchers | | | | | | | | | | | |
|-------------------------|-----------|-----------------------------------------------------------|------------|--------|-----------|-----------|--------|--------------------|--------|-----------|-----|
| Template | | Import_Template | | | | | | | | | |
| CSV File | | C:\Users\SE_ekokulyansky\Documents\JV_Import\GDAPL3SP.csv | | | | | | | | Load file | |
| Ref Date | | 11/19/13 | | | | | | | | | |
| Memo | | | | | | | | | | | |
| Validate | | Create Voucher | | | | | | | | | |
| ID | FileBatch | TemplateID | ImportDate | Field1 | Field2 | Field3 | Field4 | Field5 | Field6 | Field7 | F.. |
| 18 | 2 | 2 | 11/19/13 | PR | 025000000 | -24902.73 | 82313 | PAYROLL-COMMUNITY | 83013 | 2 | 2 |
| 19 | 2 | 2 | 11/19/13 | PR | 214000000 | -432.8 | 82313 | EE MEDICARE | 83013 | 2 | 2 |
| 20 | 2 | 2 | 11/19/13 | PR | 214000000 | -1850.63 | 82313 | EE SOC SEC | 83013 | 2 | 2 |
| 21 | 2 | 2 | 11/19/13 | PR | 215000000 | -432.81 | 82313 | ER MEDICARE | 83013 | 2 | 2 |
| 22 | 2 | 2 | 11/19/13 | PR | 215000000 | -1850.63 | 82313 | ER SOC SEC | 83013 | 2 | 2 |
| 23 | 2 | 2 | 11/19/13 | PR | 216000000 | -2097.24 | 82313 | FEDERAL TAX | 83013 | 2 | 2 |
| 24 | 2 | 2 | 11/19/13 | PR | 218000000 | -298.52 | 82313 | EE SDI | 83013 | 2 | 2 |
| 25 | 2 | 2 | 11/19/13 | PR | 219000000 | -266.76 | 82313 | STATE TAX | 83013 | 2 | 2 |
| 26 | 2 | 2 | 11/19/13 | PR | 725301250 | 4199.85 | 82313 | SERVICE WAGES | 83013 | 2 | 2 |
| 27 | 2 | 2 | 11/19/13 | PR | 725301255 | 1710.24 | 82313 | SERVICE WAGES | 83013 | 2 | 2 |
| 28 | 2 | 2 | 11/19/13 | PR | 725301256 | 23938.59 | 82313 | SERVICE WAGES | 83013 | 2 | 2 |
| 29 | 2 | 2 | 11/19/13 | PR | 756301250 | 260.39 | 82313 | ER SOC SEC TAX EXP | 83013 | 2 | 2 |
| 30 | 2 | 2 | 11/19/13 | PR | 756301255 | 106.03 | 82313 | ER SOC SEC TAX EXP | 83013 | 2 | 2 |

Spotlight on Product: New Softengine Connector for SAP Business One - BarTender Barcode Printing



With hundreds of thousands of users in more than 150 countries, BarTender is the world's leading design and print software for labels, barcodes, cards and RFID tags. Softengine's connector integrates it with SAP Business One for the most versatile bar code label printing.



For more information about the latest Softengine's Extensions for SAP Business One and BarTender implemented to your specific needs, please contact Barry Lederman: 818.704.7000, blederman@softengineusa.com.

This promotional e-mail provides information on Softengine's products and services that may interest you. If you prefer not to receive e-mail from us in the future, please reply with subject: Unsubscribe.