



Setting Journal Entry References

Published on July 12, 2015



ari schapira | Follow
Director Product Management at SAP



23



2

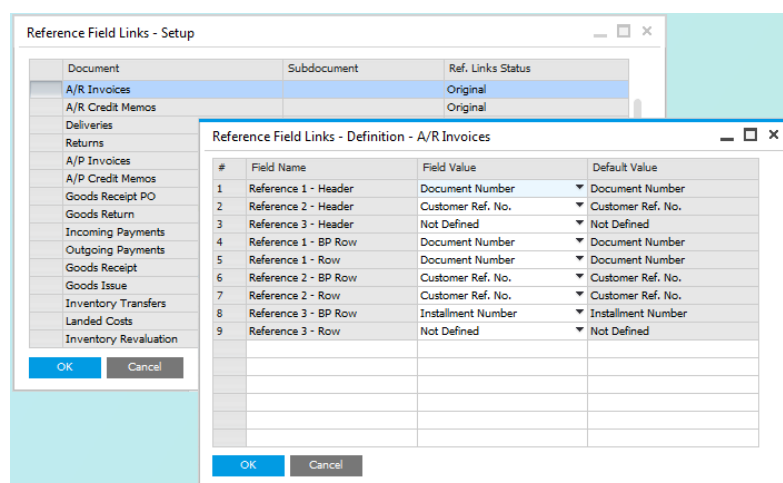


0

Ever wanted to change the assigned reference values in journal entries created by documents?

SAP Business One allows you to determine the reference values to be populated in journal entries created by documents, both in header and line levels, including user-defined fields!

Here is where the magic takes place:



To access this window, choose: Administration > Setup > General > Reference Field Links.

This function is available as of SAP Business One 8.82, version for SAP HANA and SAP Business One 8.82 .

Tagged in: [tip](#), [sap business one](#)



ari schapira
Director Product Management at SAP
86 articles

Follow

2 comments

Newest ▾



Sign in to leave your comment



ari schapira
Director Product Management at SAP

... 1y

Thanks for the feedback, we are currently looking into the topic you raised

Like Reply



Teun Aben
SAP Consultant/Integration Architect

... 1y

Hi Ari,

Yes this is a very nice future.

Is there already some idea's or plans for the option to create a journal entry (from a document) and not consolidate the lines on account in the journal entry... [See more](#)

Like Reply

Don't miss more articles by ari schapira



User Code Turns 25

ari schapira on LinkedIn



When a Customer is Also a Vendor

ari schapira on LinkedIn



More Data in BP Master Data

ari schapira on LinkedIn

Looking for more of the latest headlines on LinkedIn?

Discover more stories