

MONORAIL CRANES

AT A GLANCE

WHAT IS A MONORAIL CRANE

A monorail crane is a type of overhead crane that uses a trolley to carry the hoist along a single path. Unlike bridge cranes, the crane beam is stationary and does not move along a runway.

When using a monorail crane, material is lifted along a fixed path. Monorail cranes are used both indoors and outdoors.

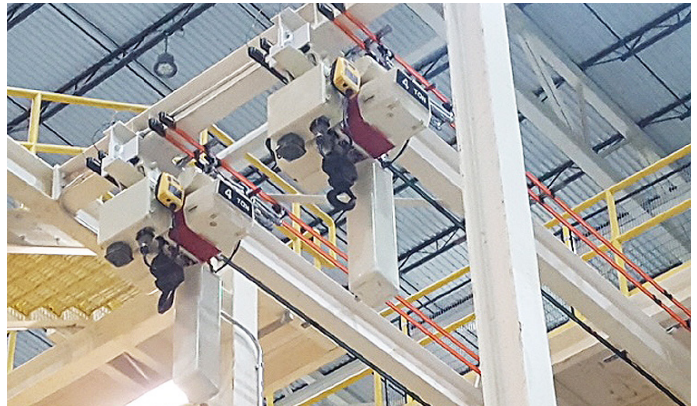
CONFIGURATIONS

Monorail cranes do not utilize a bridge or girder design—instead, the trolley is designed to connect to an I-beam, often already built into the ceiling structure, and runs along the flat surface (flange) on the bottom of the beam. They can also utilize a configured support structure.

Material can be run back and forth in a straight line, or the rails can be designed with curves, branches, switches, and with changes in elevation. Monorail cranes follow a singular path and are designed for lifts that do not require the side-to-side trolley movement provided by the bridge in an overhead or gantry style crane.

APPLICATIONS

Monorail cranes are perfect for lifting applications where a full-blown crane design is not required. They're a cost-effective and versatile solution for many assembly line and production applications. They are most commonly found in a production or assembly environment, where lifting movement of material is repetitive and predictable.



CALL 800-362-4601 TO SPEAK WITH A SPECIALIST
OR LEARN MORE AT MAZZELLACOMPANIES.COM