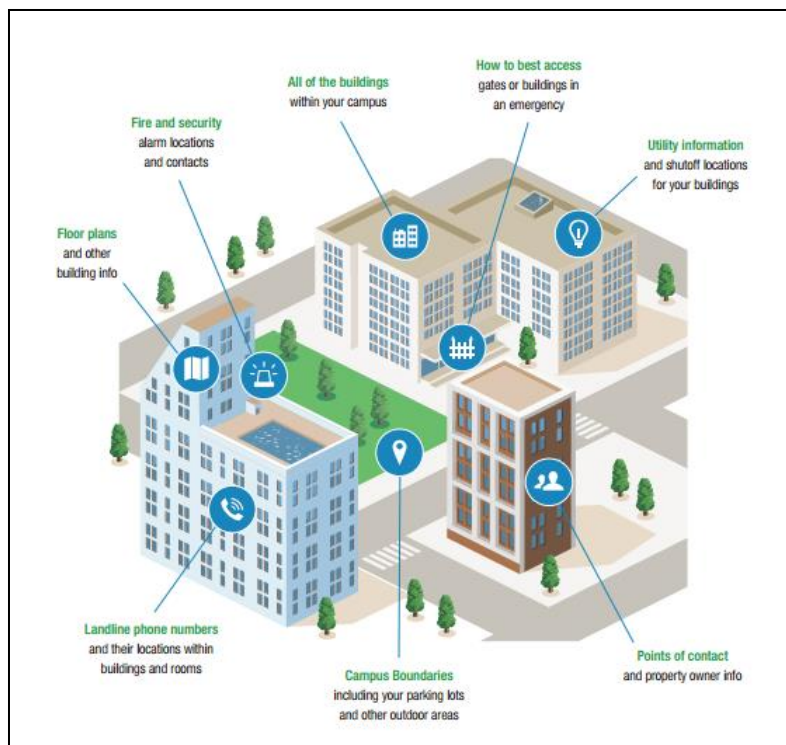


# Rave Facility

## Best Practices Guide



*Leverage Rave Facility to easily obtain additional premise information for facilities, campuses and other large structures in your community to enhance emergency response to a 9-1-1 call.*

*This best practices guide contains information on who to reach out to, how to explain Rave Facility and tools to encourage registrations in your community.*

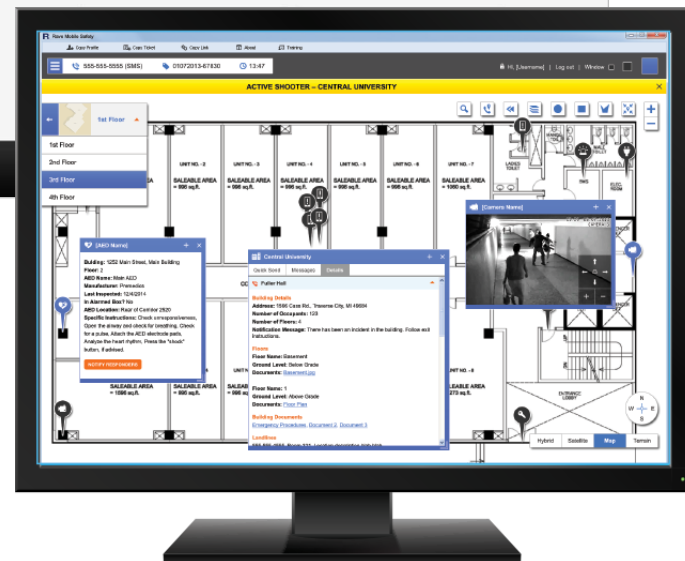
# What is Rave Facility?

Rave Facility allows for a facility profile to be created for any type of facility or campus at [www.ravefacility.com](http://www.ravefacility.com). When a 9-1-1 call comes from within the geographical boundaries of that location, the profile will immediately to the 9-1-1 call taker. In addition, a dispatcher or first responder can search for the profile of a facility within their area.

Facility managers create Facility Profiles at [www.ravefacility.com](http://www.ravefacility.com)

Facility Profiles can Include:

- Multiple buildings within a campus
- Point(s) of contact on site
- Fire alarm contact
- Security alarm contact
- Property owner contact information
- Gates or access codes



- Geographical boundaries including parking lots
- Floor plans of each building
- Landline phone numbers within a building

This additional information improves a first responders situational awareness and speeds up the emergency response.

---

## Who Is The Target Audience?

Local facility owners and administrators of a business, government, healthcare or educational organization are ideal candidates to create a Rave Facility profile.

### Recommended Rave Facility Users:

- Schools
- –Hospitals or Medical Centers
- –Strip malls or large retailers (Consider facilities such as Home Depot, Target or Supermarkets)
- –Colleges
- –Hotels
- –Large corporations or corporate office parks (These are often managed by a property management firm)

## Why Should They Create a Profile?

Emergency calls come from within large facilities or campuses every day, from landlines, mobile phones, and VOIP. Whether it is an employee, customer or visitor in that location, having the information to reach their exact location within the facility as well as access points, points of contact and maps can cut seconds and minutes off of the response time. A Rave Facility profile helps protect facilities and the people who occupy them every day.

### Specific Use Cases:

- **Fire:** a profile can contain evacuation routes, exits in a building, stairwells and elevators, on-site contacts and the closes hydrants in order to safely evacuate and respond to a fire or other hazard on-site
  - **Medical emergency:** a profile can contain access points to the location, location of AEDs on-site, and who to contact on-site
  - **Active Shooter or Other Incident:** a profile can contain exits, floorplans, on-site contacts and surrounding parking lots and roads in order to lock down or evacuate a location quickly
-

# Rave Facility Outreach Materials

## Outreach Partners

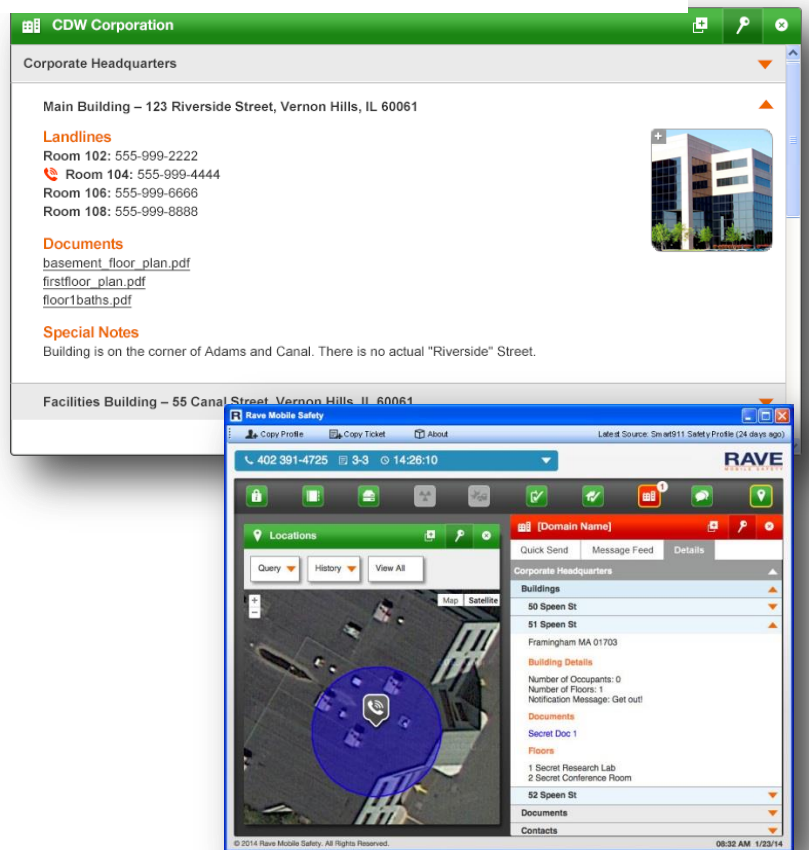
- Fire Department
- Business Licenses
- Building permits
- Chamber of Commerce

## Community Partners

- Schools
- Senior centers
- Hospitals & medical centers
- Retail stores
- Office buildings
- Hotels
- Churches

Consider working with Chamber of Commerce and Town authorities to require the creation of a Facility profile for building permits or make it a city ordinance. You can download a sample City Ordinance here:

<https://ravemobilesafety.app.box.com/s/spldhqn898wk2yuzbbkkesie1y83eqj>



## Marketing Materials:

- Flyers
- Tri-fold brochure
- Business Cards
- Logo
- Web badges
- Email Text Templates
- <https://www.ravemobilesafety.com/facility-marketing/>



## Questions?

If you have any questions about marketing Rave Facility in your community, please contact the Rave Marketing team at [smart911@ravemobilesafety.com](mailto:smart911@ravemobilesafety.com).