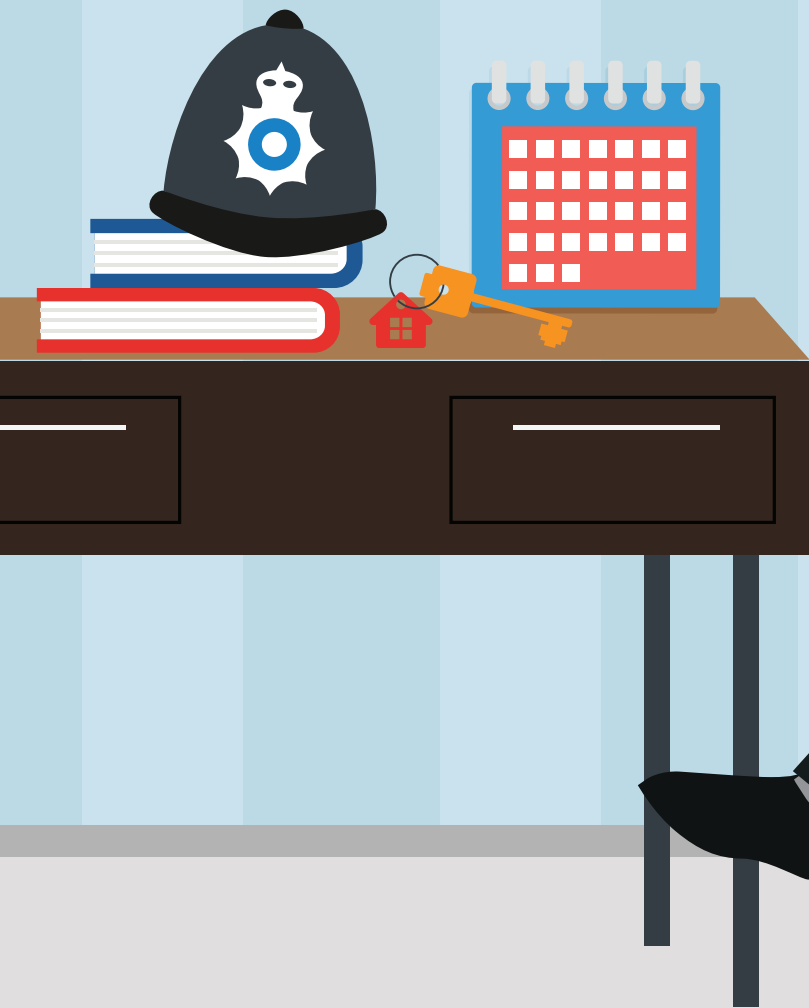


# Police Pay Scales 2018/19



Here is your guide to the police salaries for 2018/19. The tables below contain all information pertaining to police officer pay across the country. However, officers based in London or the south of England will need to include allowances as listed on the final page.

## Constable

(appointed on or after 1 April 2013)

Pay point	From 1 September 2018
0	£20,370 (i)
1	£23,586
2	£24,654
3	£25,728
4	£26,802
5	£28,947
6	£33,267
7	£39,150

(appointed before 1 April 2013)

Pay point	From 1 September 2018
Commencing service	£24,936
Following initial training	£27,831
2	£29,445
3	£31,245
4	£32,229
5	£33,267
6	£36,189
7	£39,150

## Sergeant

Pay point	From 1 September 2018
1	£40,488
2	£41,847
3	£42,738
4	£43,998

## Inspector

Pay point	From 1 September 2018
0	£50,160
1	£51,573
2	£52,986
3	£54,408

## Inspector (London)

Pay point	From 1 September 2018
0	£52,356
1	£53,775
2	£55,200
3	£56,622

## Chief Inspector

Pay point	From 1 September 2018
1	£55,521
2	£56,634
3	£57,804
In post on or before 31 August 1994	£58,749

## Chief Inspector (London)

Pay point	From 1 September 2018
1	£57,732
2	£58,845
3	£60,009
In post on or before 31 August 1994	£60,945

(i) The salary paid to an officer at pay point 0 shall be between £20,370 and £23,586 as determined by the Chief Officer of Police, after consultation with the local policing body, based on local recruitment needs or the possession of a policing qualification or relevant experience. A new recruit with the Metropolitan Police will start on pay point 1.

## Superintendent

Promoted to rank on or after 1 April 2014

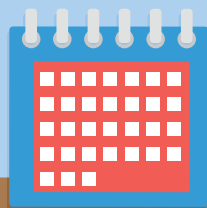
Pay point	From 1 September 2018
1	£66,789
2	£70,275
3	£73,947
4	£78,888

Promoted to rank before 1 April 2014

Pay point	From 1 September 2018
1	£66,789
2	£69,543
3	£72,297
4	£75,057
5	£77,814

## Chief Superintendent

Pay point	From 1 September 2018
1	£82,779
2	£85,578
3	£87,327



## Chief Officers outside London

Forces	Chief Constable	Deputy Chief Constable
Greater Manchester West Midlands	£194,523	£149,142
West Yorkshire	£181,560	£145,248
Thames Valley	£171,834	£141,765
Merseyside Northumbria	£168,585	£139,089
Hampshire	£165,342	£136,413
Devon & Cornwall Kent Lancashire	£162,108	£133,734
Avon & Somerset Essex South Wales South Yorkshire Sussex	£158,868	£131,067
Nottinghamshire	£152,382	£125,715
Cheshire Derbyshire Hertfordshire Humberside Leicestershire Staffordshire West Mercia	£149,142	£123,036
Norfolk Surrey	£145,896	£120,366
Bedfordshire Cambridgeshire Cleveland Dorset Durham Gwent North Yorkshire North Wales Northamptonshire Suffolk Wiltshire	£142,689	£117,690
Cumbria Dyfed-Powys Gloucestershire Lincolnshire Warwickshire	£139,410	£116,718

## Assistant Chief Constables and Commanders

Pay point	From 1 September 2018
2	£100,509
4	£106,986
6	£113,475

## Chief Officers in London

Metropolitan Police Service	From 1 September 2018
Commissioner	£278,820
Deputy Commissioner	£230,190
Assistant Commissioner	£194,523
Deputy Assistant Commissioner	£149,142

City of London	From 1 September 2018
Commissioner	£172,491
Assistant Commissioner	£142,272

**For more information on Met and City of London Police Salaries, please contact:**

### Metropolitan Police Federation

York House, 2 Elmfield Park, Bromley, Kent, BR1 1LU  
 t: 020 8464 2322  
 e: [enquiries@metfed.org.uk](mailto:enquiries@metfed.org.uk)  
[www.metfed.org.uk](http://www.metfed.org.uk)

**For national police enquiries, please contact:**

### The Police Federation of England and Wales

Federation House, Highbury Drive, Leatherhead, Surrey, KT22 7UY  
 t: 01372 352000  
 e: [gensec@polfed.org](mailto:gensec@polfed.org)  
[www.polfed.org](http://www.polfed.org)

If you're reading a paper copy of this guide, visit [metfriendly.org.uk/police-pay](http://metfriendly.org.uk/police-pay) to view this online.

## Allowances

The revised values of allowances from 1 September 2018 are:

Allowances	From 1 September 2018
London Weighting	£2,445
London Allowance (ii)	£1,011

(ii) Other London allowances may be paid at different rates to officers depending on when they joined the service.

South East Allowance Maxima	From 1 September 2018
Essex, Hertfordshire, Kent, Surrey, and Thames Valley	£3,000
Bedfordshire, Hampshire, Sussex	£2,000
Dog Handlers' Allowance	£2,283

Motor Vehicle Allowance - Essential Users' Lump Sum	From 1 September 2018
451 - 999cc	£846
1000 - 1199cc	£963
1200 - 1450cc	£1,239
Per mile (all users)	HMRC approved rate - £0.45 for tax year 2018/19 for first 10,000 business miles

