

REPORT

2018-04-13

Patient Information

Patient ID:	emc2
Name:	Anonymized
Birth Date:	-
Sex:	-

Brain Volumetry

	WM	GM	CSF	Brain	ICV
2014-01-01	339 cm ³ 30.1% of ICV	532 cm ³ 47.2% of ICV	256 cm ³ 22.7% of ICV	871 cm ³ 77.3% of ICV	1127 cm ³
<i>Compared to 2010-01-01</i>	+1.9%	-7.5%	+13.6%	-4.0%	-0.5%
2010-01-01	333 cm ³ 29.4% of ICV	575 cm ³ 50.8% of ICV	225 cm ³ 19.9% of ICV	908 cm ³ 80.1% of ICV	1133 cm ³

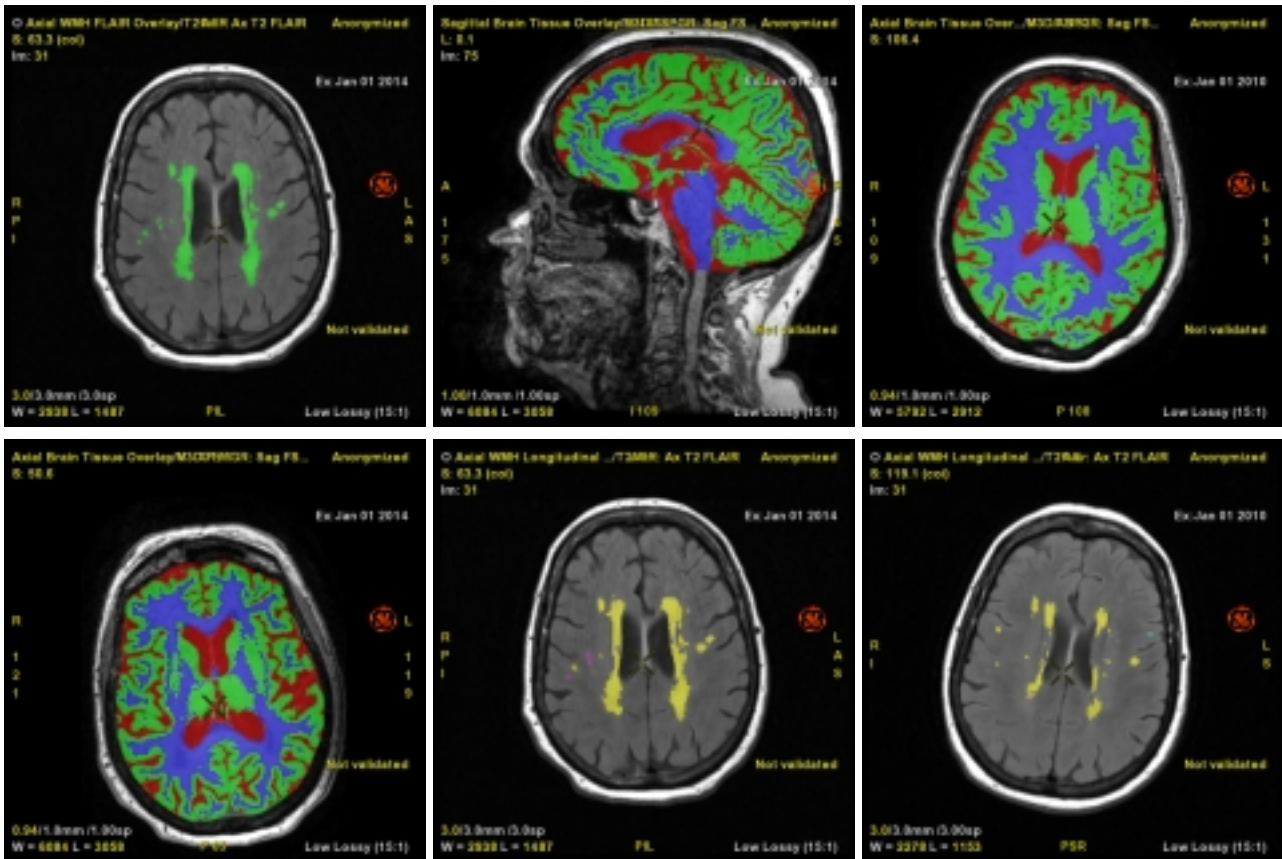
White Matter Hyperintensities

	Total	Consistent	New	Disappearing
2014-01-01	51 WMH	23.26 cm ³ 6.86% of WM		
<i>Compared to 2010-01-01</i>	+4 WMH	+189.3%	17 WMH +14.69 cm ³	3 WMH 0.57 cm ³
2010-01-01	47 WMH	8.04 cm ³ 2.42% of WM		

Resources

	Time since preceding	Scan(s) used	Manufacturer	Field strength
2014-01-01	4y 0m 0d	[13:41] Sag FSPGR 3D [13:54] Ax T2 FLAIR	GE MEDICAL SYSTEMS	3T
2010-01-01		[11:23] Sag FSPGR 3D [11:41] Ax T2 FLAIR	GE MEDICAL SYSTEMS	3T

Images



Brain Volumetry

- Cerebrospinal fluid (CSF)
- Grey matter (GM)
- White matter (WM)

White Matter Hyperintensities

- Candidates
- Validated

WMH Longitudinal

- New
- Consistent
- Disappearing