

# Quantib Brain

## REPORT

2016-11-03



**Quantib**

Medical Image Quantification

### Patient Information

Patient ID:	emc2
Name:	Anonymized
Birth Date:	-
Sex:	-

### Brain Volumetry

	WM	GM	CSF	Brain	ICV
2014-01-01	339 cm <sup>3</sup> 31.0% of ICV	515 cm <sup>3</sup> 47.0% of ICV	241 cm <sup>3</sup> 22.0% of ICV	854 cm <sup>3</sup> 78.0% of ICV	1095 cm <sup>3</sup>
<i>Compared to 2010-01-01</i>	-3.4%	-1.4%	+10.4%	-2.2%	+0.3%
2010-01-01	351 cm <sup>3</sup> 32.2% of ICV	523 cm <sup>3</sup> 47.9% of ICV	218 cm <sup>3</sup> 20.0% of ICV	874 cm <sup>3</sup> 80.0% of ICV	1092 cm <sup>3</sup>

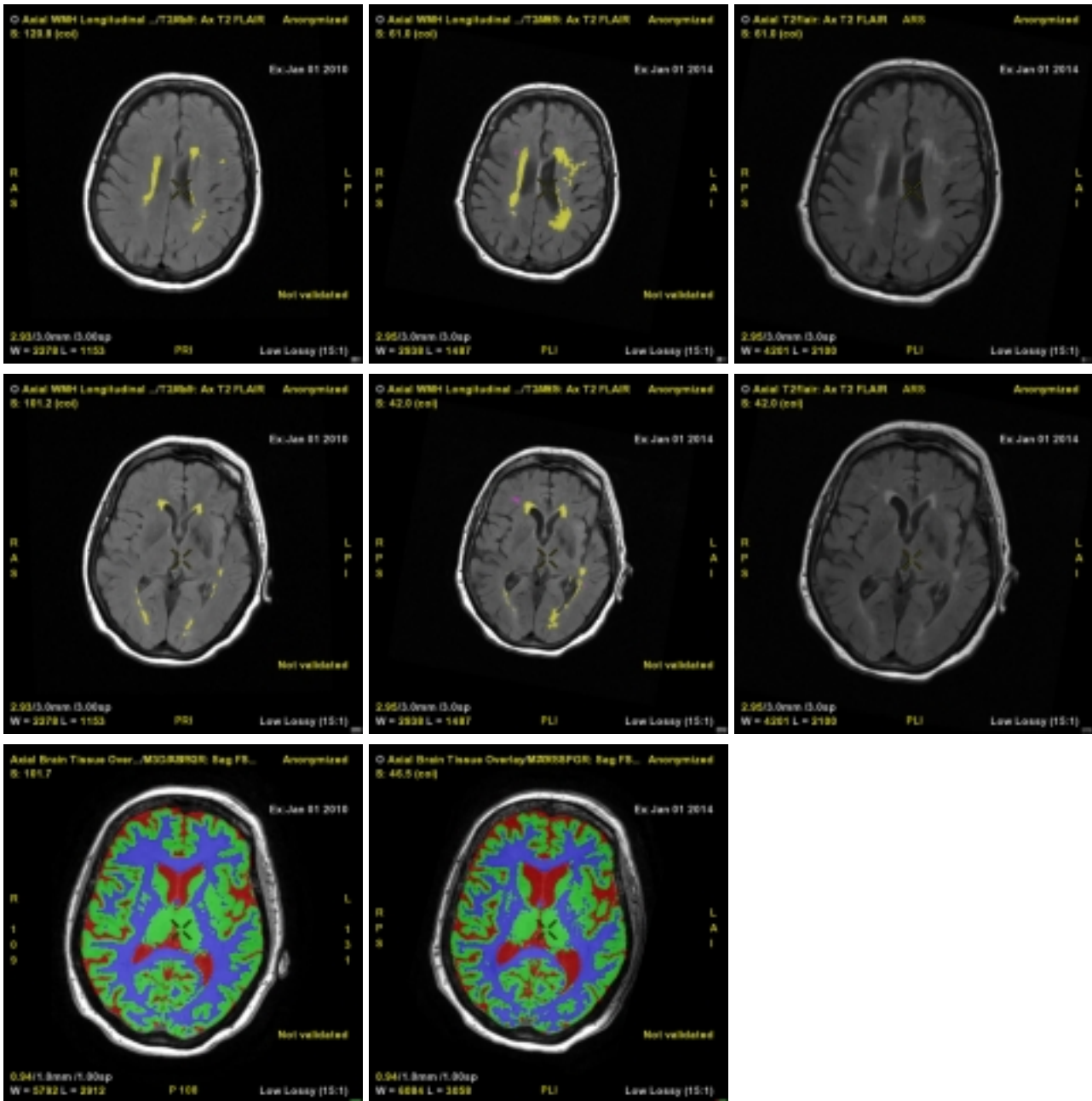
### White Matter Hyperintensities

	Total	Consistent	New	Disappearing	
2014-01-01	48 WMH 19.19 cm <sup>3</sup> 5.66% of WM				
<i>Compared to 2010-01-01</i>	+3 WMH	+149.3%	16 WMH +11.09 cm <sup>3</sup>	32 WMH 0.55 cm <sup>3</sup>	8 WMH 0.14 cm <sup>3</sup>
2010-01-01	45 WMH 7.70 cm <sup>3</sup> 2.19% of WM				

### Resources

	Time since preceding	Scan(s) used	Manufacturer	Field strength
2014-01-01	4y 0m 0d	[13:41] Sag FSPGR 3D [13:54] Ax T2 FLAIR	GE MEDICAL SYSTEMS	3T
2010-01-01		[11:23] Sag FSPGR 3D [11:41] Ax T2 FLAIR	GE MEDICAL SYSTEMS	3T

# Images



## Brain Volumetry

- Cerebrospinal fluid (CSF)
- Grey matter (GM)
- White matter (WM)

## White Matter Hyperintensities

- Candidates
- Validated

## WMH Longitudinal

- New
- Consistent
- Disappearing