

Introducing



SCADA HMI software

An easy to use, cost-effective SCADA software package allowing the custom design of Graphical screens for use with Abbey Systems Telemetry products.

Features

- Realtime Trends
- Datalogged Trends
- Alarm Queue
- EziGrafix Editing Tools
- Secure Operations
- Subscreen Popups
- Users Support
- Tags and Notes *Option*
- Symbols

Water and Wastewater SCADA

Power Networks

Radio Network Monitoring

Gas SCADA

Building Automation projects



INNOVATORS IN REMOTE CONTROL TECHNOLOGY



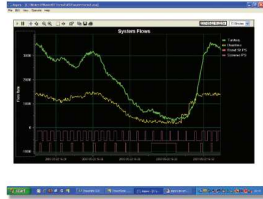
Benefits



Hi Performance Advanced Trending Package

- Display realtime and historic timestamped file trends
- Pan / zoom / scroll / print a trend
- Preselected display periods, 10min, hour, day, week, month or specify a date range
- Cursor and value reading
- 8 pens per trend
- Multiple embedded trends on any screen

* Historical trends are unavailable on dial up connections



Alarm Queue

Site inputs and Measurement setpoints can activate an Alarm

- Four state Alarm cycle:
Alarmed - date and time
Acknowledged - date and time
Cleared but unacknowledged
Cleared and acknowledged - Alarm is removed from the Alarm Queue
- Global acknowledge
- Name of acknowledger and time an alarm was acknowledged by SMS

ID	Time	Description	Status
000001	22/11/10 09:00	Pump 1 Run	ALARM
000011	22/11/10 14:14	Abbay Pump 9	ALARM
000002	22/11/10 22:00	Abbay Pump 10	ALARM

Tags & Notes Option

- Tags prohibit the operation of plant from Aspex
- Notes add important information about an item of plant
- Manage Tags & Notes from a single list
- Tag or Note icon carries through to all affected screens
- Popup description when the cursor passes over an icon

ID	Description	Time
000001	P1 Cavitation Setpoint	2007-05-16 14:38:00
000002	Standby Setpoint	2007-05-16 14:38:00
000003	Standby Setpoint	2007-05-16 14:38:00
000004	Pump Overcurrent Setpoint	2007-05-16 14:38:00

Acknowledgement and thanks to Eric Williams, Control Systems Ltd, who created some of the screens shown in this brochure and Phil Smith for his approval to use screens generated for Matamata-Piako District Council's water & wastewater SCADA system

EziGrafix Editing Tools

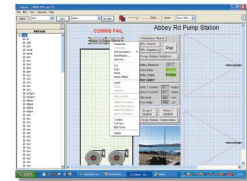
An easy to use drawing package which comes bundled with every copy of Aspex; allows users to create screens to represent their individual networks.

Pre-authorized users may:

- Select / draw / animate options
- Import images to create screens

Other features:

- Utilities to convert existing TM screens into Aspex screens
- File export in SVG
- Multiple embedded Aspex screens (Alarm Queue, Log File, Trends can all be embedded in a single screen)
- Online editing for authorised users



Secure Operation

- Authorised Output Action security option
- Authorised Alarm Ack security option

Subscreen Popups

De-clutter screens by showing detailed information on small popup screens e.g.

- Pump station performance stats, pump run hours, no. of starts, inflow measurements, pump rate, daily and weekly totals
- Set pump start/stop and alarm setpoint parameters
- RTU statistics, battery longevity, comms availability, RSSI

Parameter	Value	Units
Duty Start Level	1400	mm
Standby Start Level	1700	mm
High Level Alarm	1900	mm
Pump Stop Level	600	mm
Skup Time	0	Seconds
P1 Cavitation Setpoint	30	Amps
P2 Cavitation Setpoint	30	Amps
P1 Overcurrent Setpoint	60	Amps
P2 Overcurrent Setpoint	60	Amps

Log File

- An online record of system actions

Partner

If your job is the management of any sort of remotely located network let us partner with you to provide the tools you need to manage your network.

Support

- A single phone call for all support from simple "how to" to engineering assistance
- A single database simplifies setup and management
- Works with Abbey Systems Powerlink Telemetry Server

New Zealand

Abbey Systems Ltd
L4, 220 Willis Street
PO Box 27 497
Wellington, New Zealand
Ph +64 4 385 6611
Fax +64 4 385 6848
Email sales@abbey.co.nz
www.abbey.co.nz

United States

Abbey Systems, Inc
965 Tyinn St, Unit 7
Eugene OR97402, USA
Ph +1(541) 357 4386
Fax +1(541) 357 4386
Mobile +1(801) 699 3370
Email walt@abbeysystems.com
www.abbeysystems.com

Remote Control Systems
3596 South 300 West, Unit 3
Salt Lake City, UT84115
USA
Ph +1 (801) 268 1198
rich@rcsutah.com



BR-655-1.2-2012-May