

## "ADD COLUMNS" TO TEST REPORT

TITAN, Universal Strength tester, James H. Heal & Co. Ltd.  
Software- Version 6.2.0

To add "Modulus" results, first select Warp Specimens:

The screenshot shows the TITAN software interface. On the left is a tree view of test data. The 'Results' window on the right displays a table with the following data:

Specimen	Extension at	Observations
<input type="checkbox"/> Exclude	Force of 2.00kgf Cycle 2 Up	
1	% 70.37	

The tree view on the left shows the following structure:

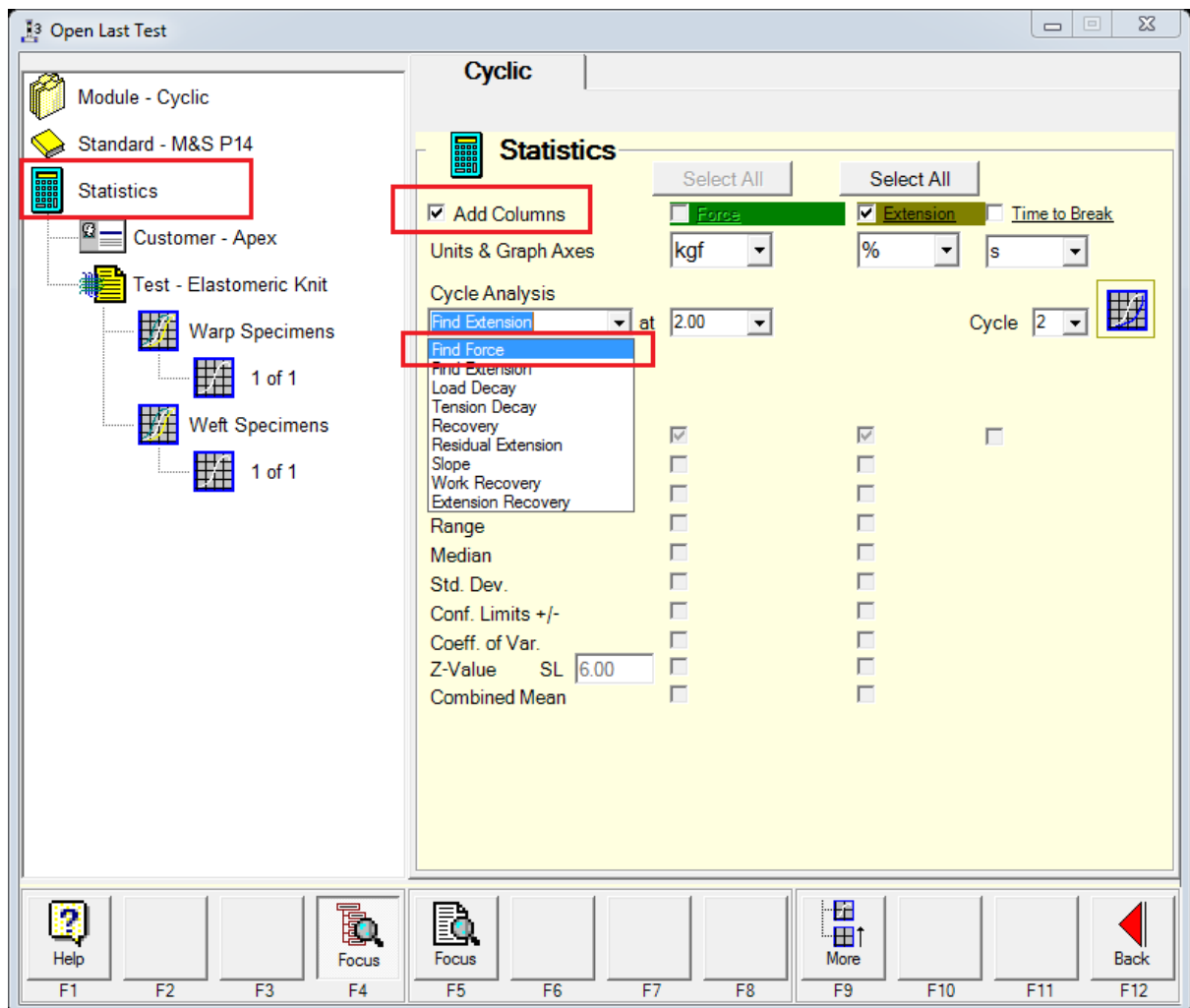
- Module - Cyclic
  - Standard - M&S P14
    - Statistics
      - Customer - Apex
        - Test - Elastomeric Knit
          - Warp Specimens
            - 1 of 1
          - Weft Specimens
            - 1 of 1

The bottom of the interface features a toolbar with function keys F1 through F12. The 'Results' button (F6) is highlighted, indicating it is the active window.

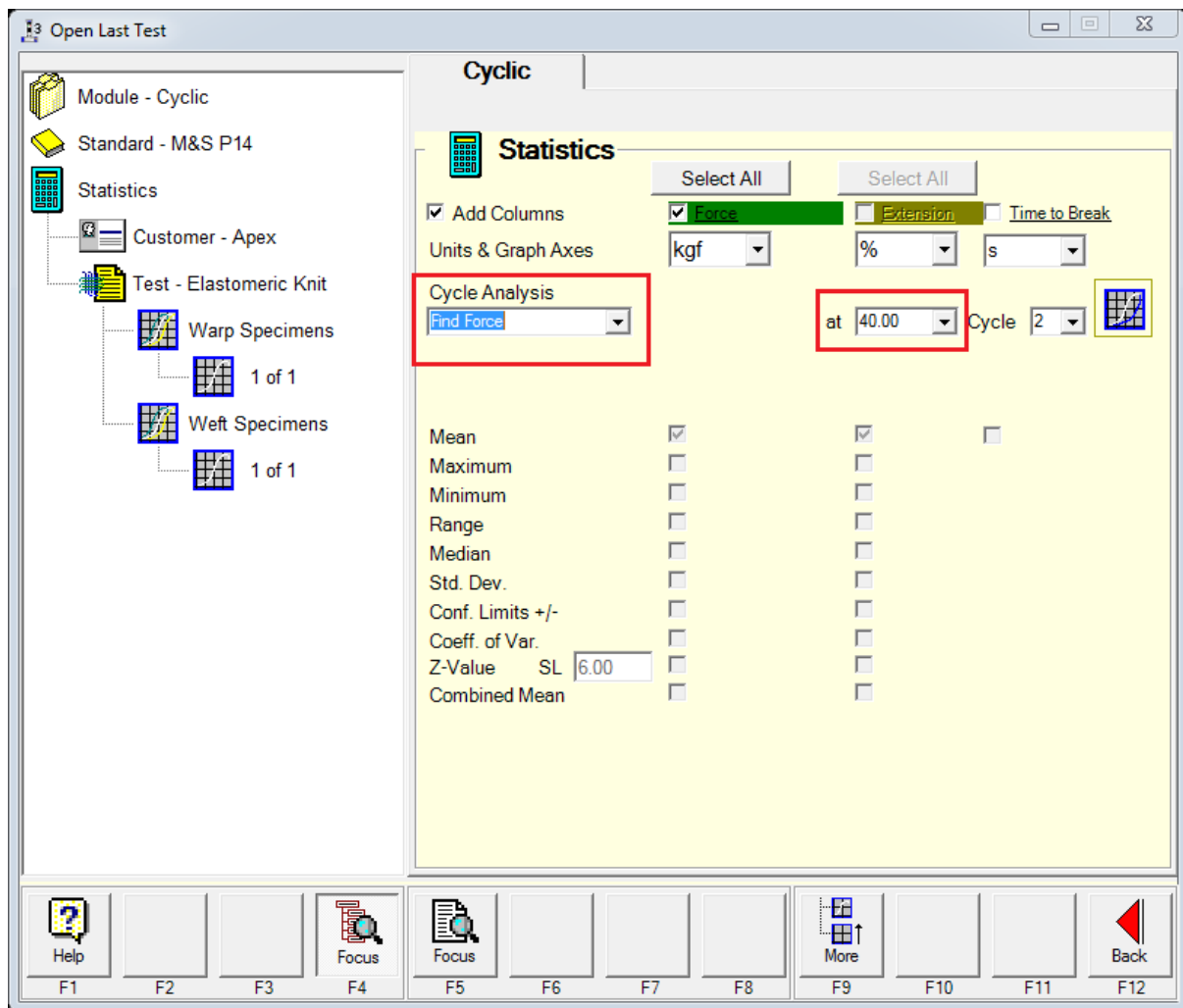
Then **Statistics**.

Then in the **Cycle Analysis** drop-down list, select **Find Force**.

Then check the **Add Columns** check-box.



You then see this screen:



Enter the **Extension at** value at which to find the corresponding force, in this example, 40%. This is the Modulus at 40% Extension.

Then click back on **Warp Specimens** again.  
You will now see the Modulus result.

The screenshot shows a software window titled "Open Last Test". On the left is a tree view of test components: "Module - Cyclic", "Standard - M&S P14", "Statistics", "Customer - Apex", "Test - Elastomeric Knit", "Warp Specimens", "1 of 1", "Wet Specimens", and "1 of 1". The "Warp Specimens" item is highlighted with a red box. On the right is a "Results" table with the following data:

Specimen	Extension at	Force at	OI
<input type="checkbox"/> Exclude	Force of 2.00kgf Cycle 2 Up	Extension of 40.00% Cycle 2 Up	
1	% 70.37	kgf 0.41	

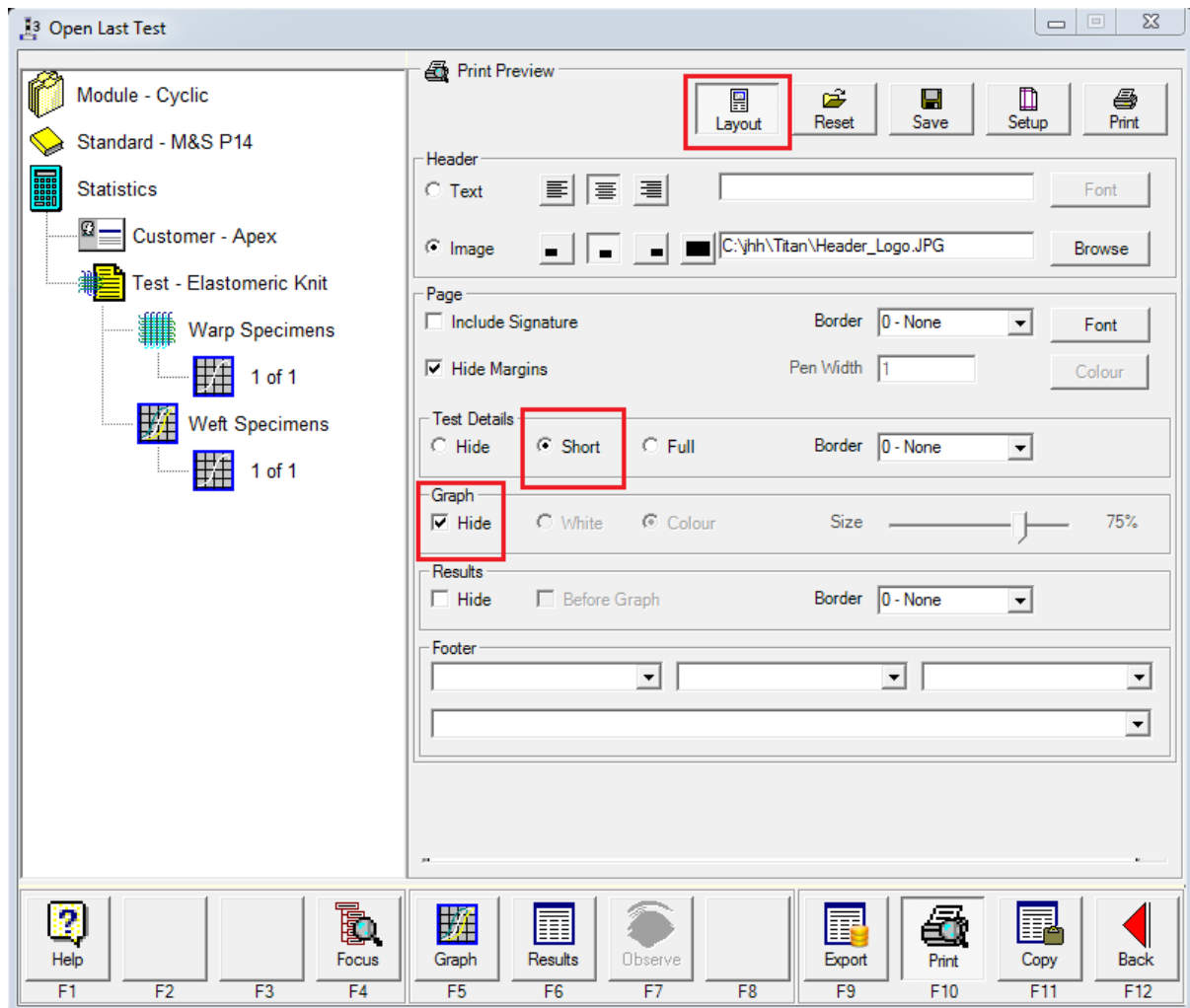
At the bottom of the window is a toolbar with icons for Help (F1), F2, F3, Focus (F4), Graph (F5), Results (F6), Observe (F7), F8, Export (F9), Print (F10), Copy (F11), and Back (F12).



On the print preview screen, click **Layout**.

To reduce the **Test Details** to a minimum, select the Test Details **Short** button.

To hide the **Graph**, check the **Hide Graph** check-box.



Click **Layout** again to return to the **Print Preview**.

The entire print for the Warp Specimens is now confined to the area shown in the blue box below.

Click **Print** (green box) to send your test report to the Windows default printer.

