

TestWise 2015 – Adding EN 16732: 2015

The European Standard for testing and performance requirements of zip fasteners was introduced in 2015 after TestWise 2015 was released.

The test procedures in the Annexes of EN 16732 are based on BS 3084: 2006, mostly with little or no change.

Therefore, it is easy to copy the BS 3084 test procedures and rename and edit them to suit the new EN 16732.

This FAQ is not applicable to TestWise 2017 as the procedures for EN 16732 are included.

Here is an example

Log in to TestWise as an Administrator.

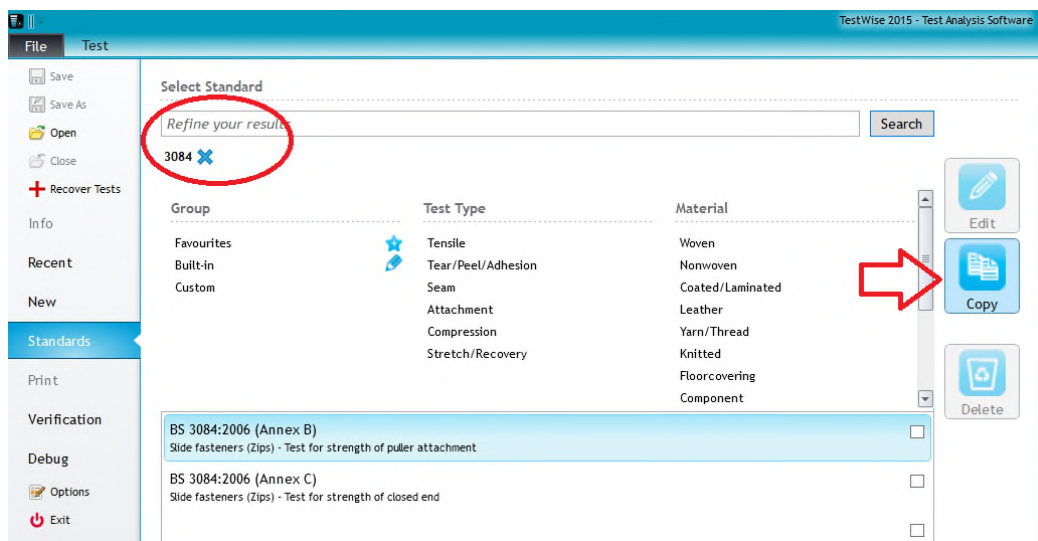
From the **File** menu select **Standards**.

In the **Search** box, type **3084** and press the *Enter* key.

You will see a list of the procedures for BS 3084.

Select (single click) on the first procedure in the list, notice that the **Copy** button is now enabled.

Click on the **Copy** button to create a template based on BS 3084 Annex B.



Type a unique new **Name** for the procedure.

Type a **Description** for the procedure.

Edit Standard

— General Settings

Name: EN 16732: 2015 (Annex B)

Description: Slide fasteners (Zips) - Test for strength of puller attachment

Number of Specimens: 13

Jaw Separation: 100.00 mm

Force Control Gain: 25.00

Units: Select...

— Procedure Settings

Break Detection: 50 %

Speed: 100.00 mm/min Edit

— Result Settings

Columns: Max Force
 Observations

Statistics: Mean
 Min
 Max
 Range
 Std Dev
 Conf Limits
 Coeff Of Var
 Z-Value

Check options as required

Then click the **Apply** button.

Edit Standard

— General Settings

De

Number of S

Apply

Cancel

The new procedure has been saved and is available immediately for use (see next page).

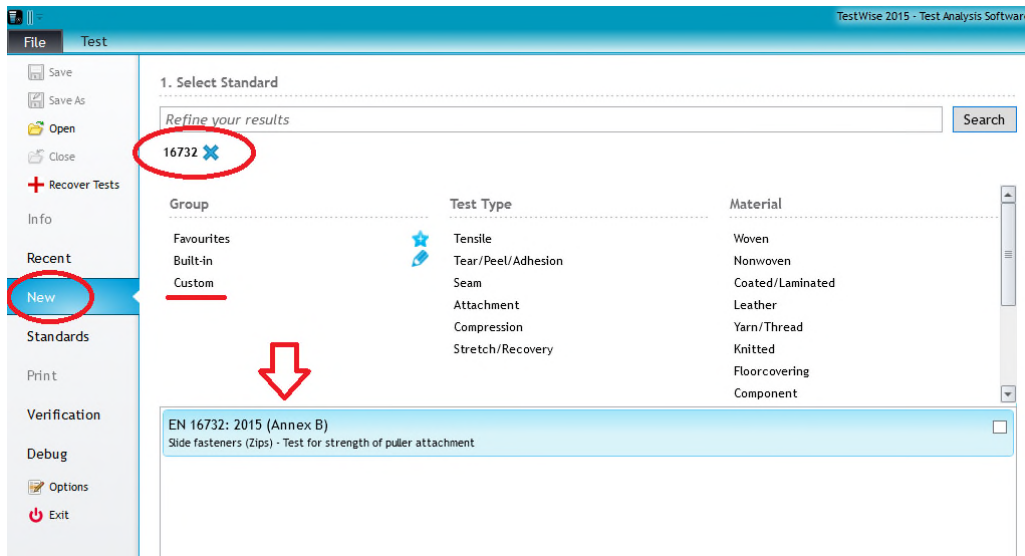
Go to the **File** menu and select **New** (to start a new test).

Type **16732** in the **Search** box and press the *Enter* key.

You will see the new procedure is available.

Procedures you create in this way are called **Custom** standards or procedures.

If you click **Custom**, all custom procedures will be listed and can be filtered in the usual way.



You can repeat this process for other procedures required.

Please check for yourself that test parameters are correct.

<http://appsupport.james-heal.co.uk/support/home>