

How to add a logo to your test report

This FAQ applies to TestWise for Titan.

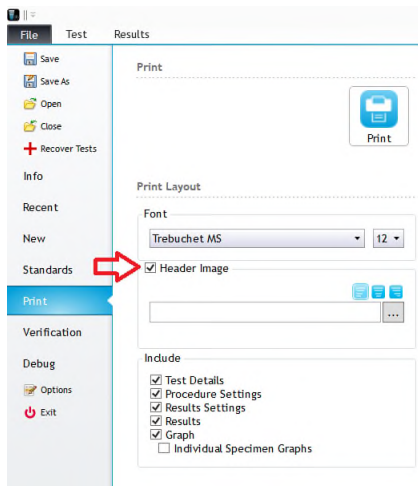
You can your company logo or other image to the header of TestWise test reports.

Supported formats are PNG, JPG, BMP and GIF. If a GIF image is used it will not be animated.

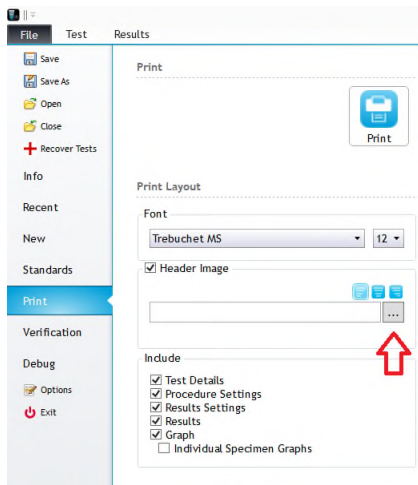
For best results, use an image which is of good quality and not more than 25mm in height (although larger images can be used).

How to do it ...

When printing a test report check the "Header Image" check box



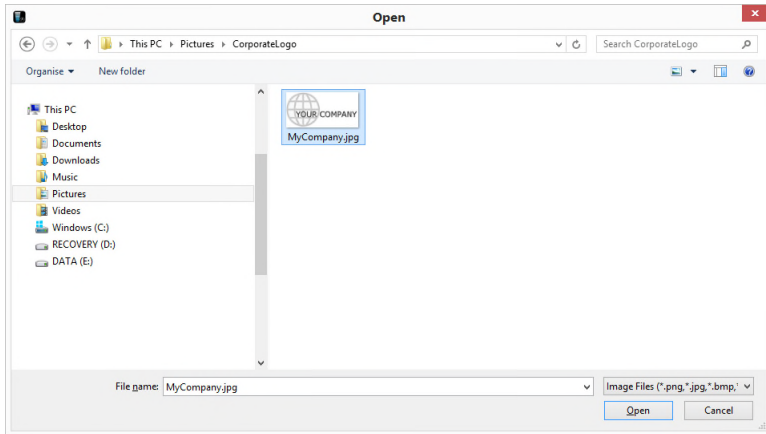
Then browse your system for the logo image file



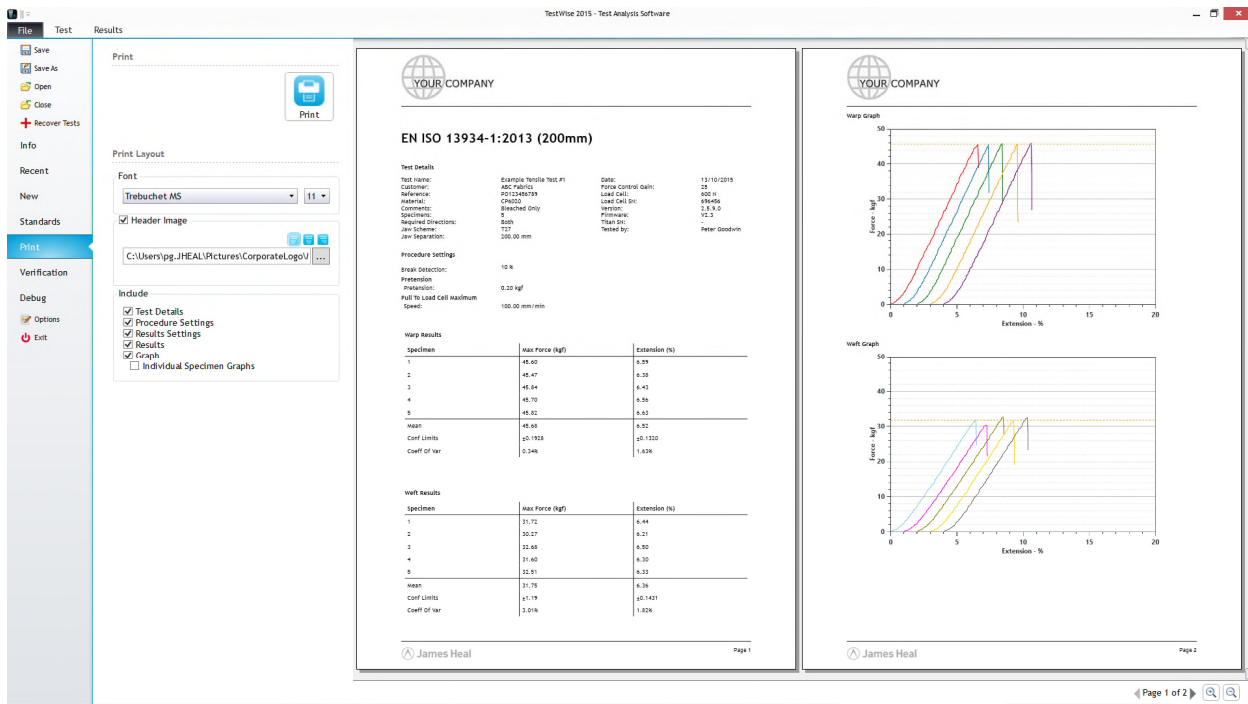
This will open a Browse / Open dialogue window

Navigate to the folder containing the logo image file and select the file

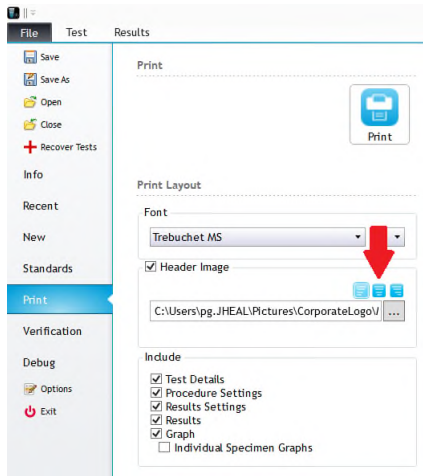
Click Open button in the dialogue window



The print preview refreshes and the logo is now displayed in the header of the test report on every page



You can align the logo image to the left, to the centre, or to the right, using the controls indicated below



The "James Heal" logo and name displayed in the footer of the test report is permanent and cannot be removed

To omit the logo image from a test report, simply uncheck the Header Image check box



EN ISO 13934-1:2013 (200mm)

Test details

Test Name:	Example Tensile Test #1	Date:	11/10/2015
Customer:	JAC Metals	Print Control date:	26
Reference:	P012461319	Load Cell:	500 N
Material:	Al6061	Load Cell Sn:	60616
Comment:	Blasched Only	Version:	2.5.9.0
Specimen:	8	Program:	VC.1
Required Direction:	Both	Test No.:	
Test Scheme:	T27	Tested by:	Wesley Goodwin
Jaw Separation:	100.00 mm		

Procedure settings

Strain Detection: 10 N
 Prestrain: 0.20 kgf
 Full to Load Cell Maximum Speed: 100.00 mm/min

Warp Results

Specimen	Max Force (kgf)	Extension (%)
1	45.60	6.59
2	44.47	6.14
3	45.84	6.43
4	45.70	6.56
5	45.92	6.53
Mean:	45.68	6.52
Coef Limits:	±5.1923	±5.1323
Coef of var:	0.14%	1.82%

Wrth Results

Specimen	Max Force (kgf)	Extension (%)
1	31.72	6.44
2	32.27	6.21
3	32.68	6.30
4	31.60	6.33
5	32.21	6.25
Mean:	32.15	6.35
Coef Limits:	±1.19	±5.1421
Coef of var:	3.01%	1.82%

<http://appsupport.james-heal.co.uk/support/home>