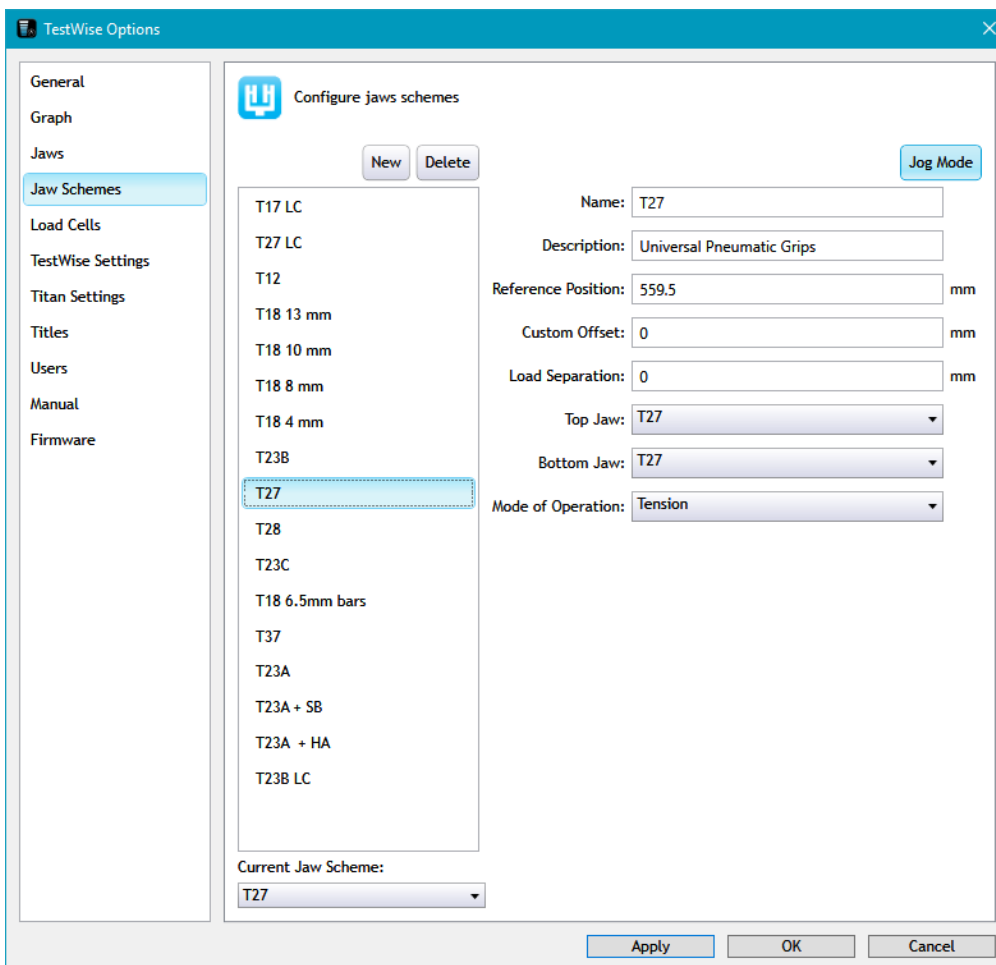


Setting or Re-setting the Reference Position for T27 Grips

Ensure the crosshead has been Homed (the procedure which sends the crosshead to the top of the column).

Fit both of the T27 Grips on to Titan.

In TestWise, goto File > Options > Jaw Schemes



Select "T27" from the list.

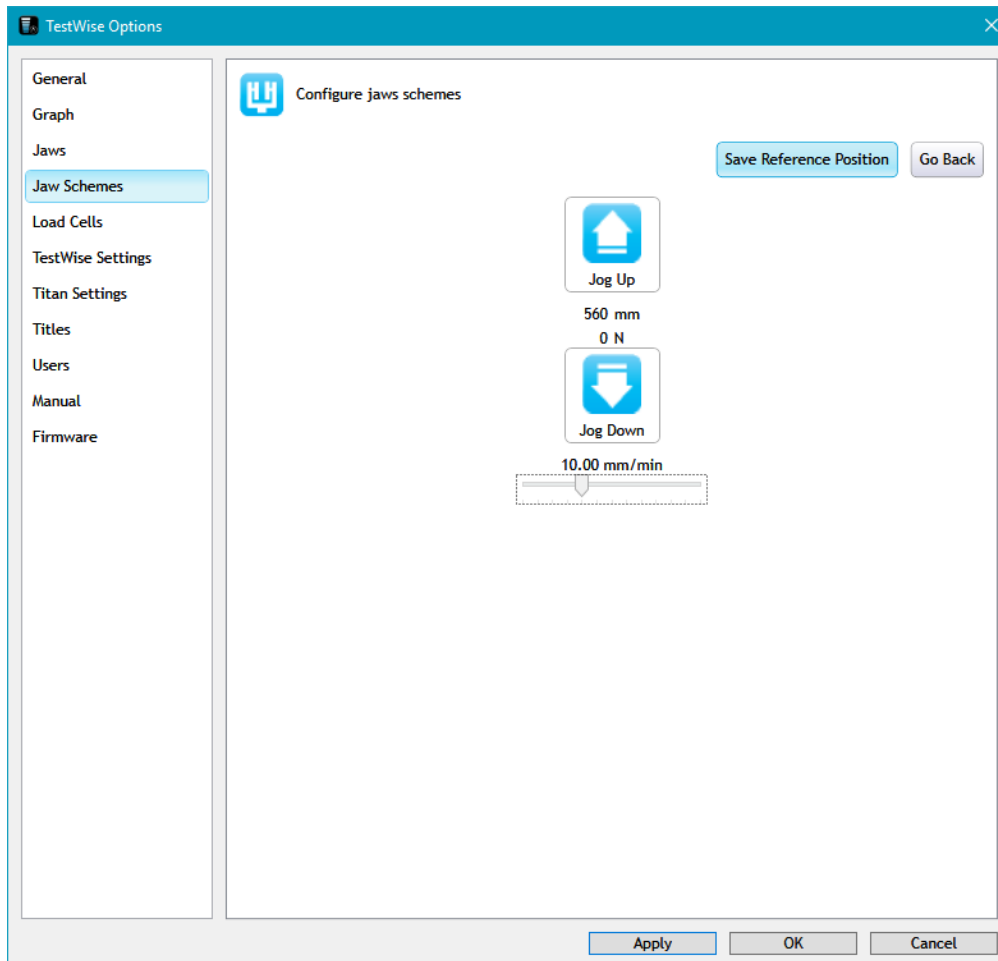
Onscreen, check that T27 is shown for the Top Jaw and Bottom Jaw.

Then click the Jog Mode button.

PTO ...

Take great care in this next step.

Slowly and carefully move the Top Jaw downwards until it just touches the Bottom Jaw.
You can use the up/down arrows on screen or on the keyboard.
The distance value will be approximately 560 mm.



Click Save Reference Position, then click Go Back.

The Reference Position is the distance from the Home Position to when the specific Jaw Scheme just touch (zero Jaw Separation).

Then click Apply (click it twice to make sure !), then click OK.

The Reference Position has now been set and you should achieve the correct Jaw Separation required by the standard.

<http://appsupport.james-heal.co.uk/support/home>