

Replacing the Door Seal – Impulse 616

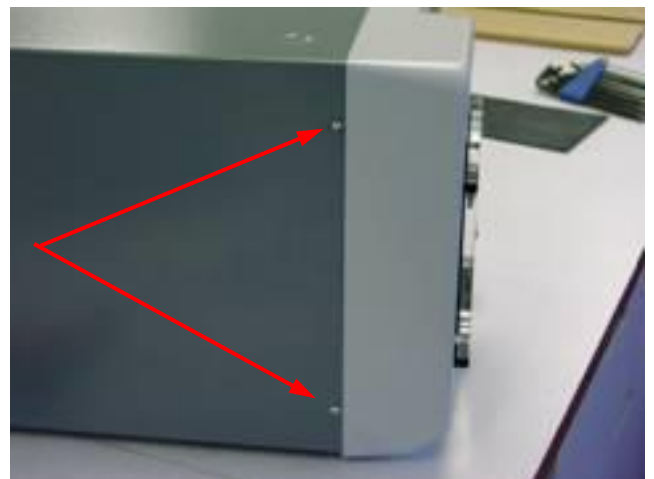
WARNING: Any maintenance work undertaken on a James Heal instrument must be done so by a trained and competent person. Where electrical work is detailed, this should only be completed by a qualified engineer. James Heal is not responsible for damage or injury arising from work carried out by any person not qualified to do so. If in doubt, please contact James Heal or your local James Heal Agent.

- 1) Disconnect the electrical and air supplies to the Impulse
- 2) Remove the 6 screws at the rear of the Impulse (2.5mm Hex / Allen key).



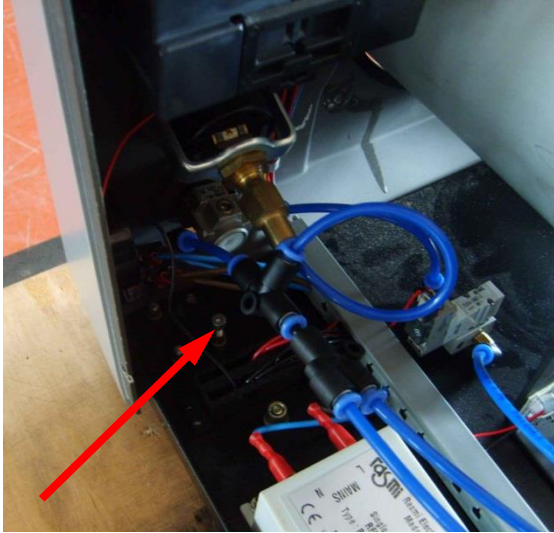
- 3) Slacken the 4 screws (2 each side) at the front of the unit.

DO NOT REMOVE THE SCREWS

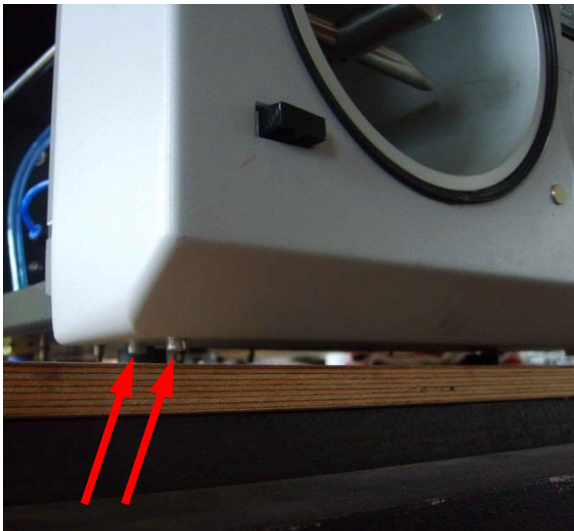


- 4) Pull the cover towards the rear of the Impulse so that the front clamp bars disengage, then remove the cover completely.

- 5) Slacken but do not remove the 2 jacking screws. These are located just behind the front panel, 1 each side.



- 6) Remove the 4 screws holding the front cover to the base, 2 each side



- 7) Pull the front cover forward a little so that it clears the test chamber. The seal can now be pulled off and replaced with the new one.



- 8) Refit the front panel and cover in the reverse sequence of above.