

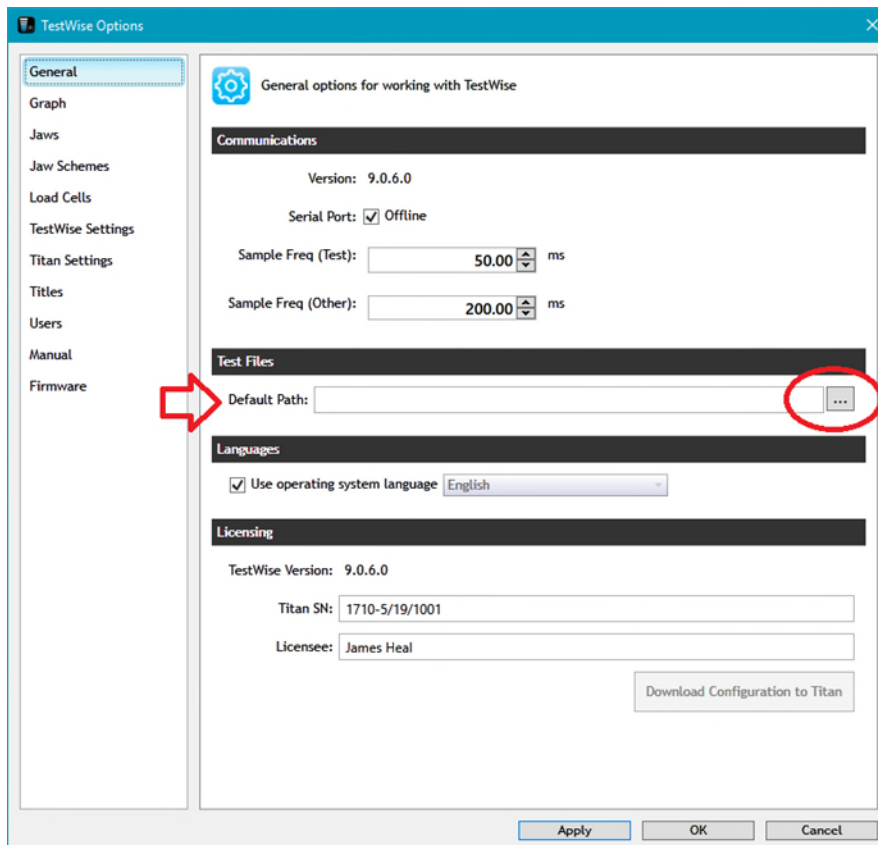
## TestWise - How to save test files to a network folder

This note applies to all versions of TestWise for Titan.

The same procedure can be followed to save to folders local to the Titan PC.


Open TestWise and go to File > Options > General

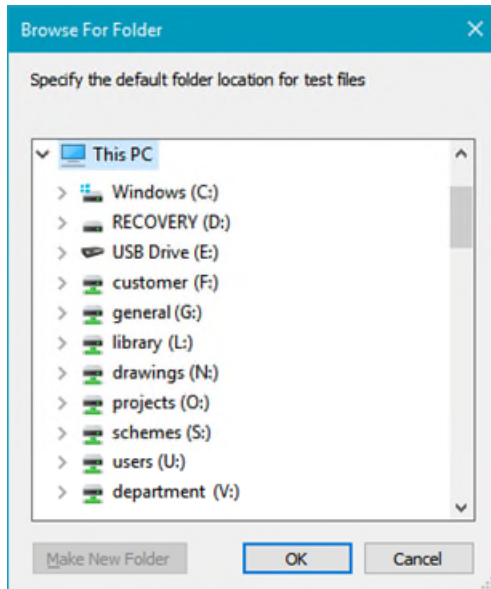
You will see this window.



Find the section which shows "Test Files" and click the browse button (...)

Find "This PC"

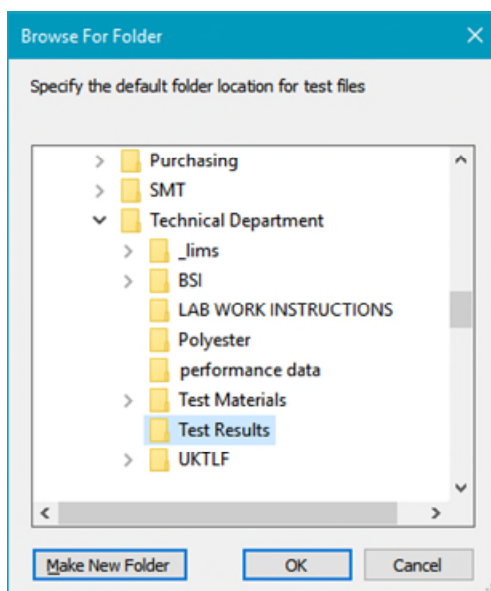
A list of network drives  will be shown – you may need to scroll down the list of locations to find them.



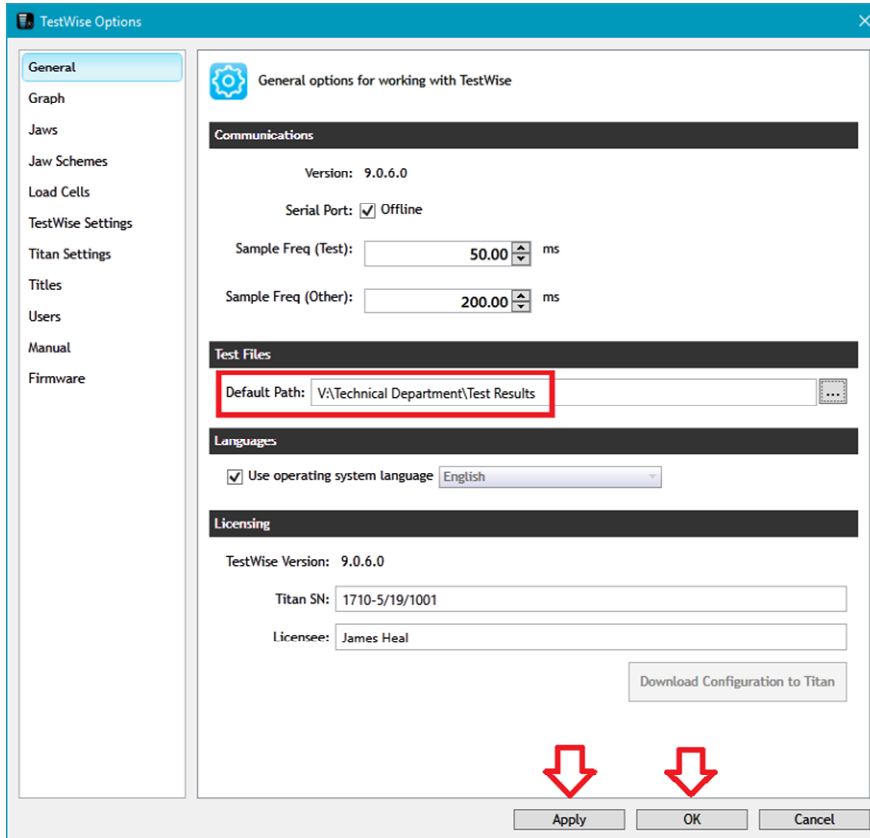
Then navigate to the folder location.

If the desired location does not exist then you can "Make New Folder".

With the location selected, click OK.



The selected location then appears as the Default Path.  
To finalise, click Apply followed by OK.



<http://appsupport.james-heal.co.uk/support/home>