



The No Leak Skylight™



# 2019 Reference Guide

## Residential Skylights and Sun Tunnel® Skylights

*Effective July 29, 2019*

*All retail prices are not valid in Alaska, Hawaii or Mexico due to additional freight cost.*



# 2019 VELUX Residential Price List

## Unit Skylights

VSS/VSE	8
VCS/VCE	10
EVMS	12
VS	14
VCM	16
EV	18
FS	20
FCM	22
QPF	24
EF	26
GSM	28
CG2	30

## Flat Roof Skylights

CFP/CXP	32
---------	----

## Skylight Flashing and Accessories

EKL/EKW	34
Blinds	36
Accessories	38

## Architectural Skylights

Architectural Series	40
Modular	44

## Roof Windows

GPU	48
GXU	50
GDL CABRIO™	52
GGU	54

## Sun Tunnel® Skylights

Rigid/Flex	56
Accessories	58



## How to order your VELUX product



[www.dealereextranet3.veluxusa.com](http://www.dealereextranet3.veluxusa.com)

The Dealer Extranet allows a dealer to order products and perform routine inquiries 24/7 using real-time pricing and inventory availability by connecting to our system through the internet.

### Hours of Operation

24 hours a day  
7 days a week



Call

**Residential**  
**1-800-888-3589**

### Hours of Operation

Monday - Friday  
7:30 a.m. - 8:00 p.m. (ET)  
Saturday  
9:00 a.m. - 5:00 p.m. (ET)



Call

**Commercial**  
**1-888-878-3589**

### Hours of Operation

Monday - Friday  
8:00 a.m. - 7:00 p.m. (ET)



Fax

**1-864-943-2631**

### Hours of Operation

24 hours a day  
7 days a week



Delivery

**Plan for delivery time** *Please note: large orders may be subject to additional ship times.*

<b>S</b> In-stock at regional warehouses. Allow 2 - 4 business days for shipment.	<b>R</b> Not stocked; Manufactured on demand. Allow approximately 20 business days for shipment.
<b>A</b> Sparks, NV region ships 2 - 3 days. All other areas must call for availability.	<b>D</b> Not stocked; Manufactured on demand. Allow approximately 26 business days for shipment.
<b>T</b> Trans-shipped from central warehouse. Allow 7 - 10 business days for shipment.	<b>N</b> Not stocked; Manufactured on demand. Allow approximately 37 business days for shipment.
<b>F</b> Greenwood, SC and Sparks, NV regions ship in 2 - 4 business days. All other areas allow 7 - 10 days.	<b>G</b> In-stock at Greenwood, SC, Aurora, IL, and Sparks, NZ ship in 2 - 3 business days. All other areas allow 5 - 7 business days..

### Order Code Examples



Code

#### Sample Ordering Code

without blinds

<b>VSS</b> Product	<b>- C01</b> Size	<b>- 2004</b> Code
-----------------------	----------------------	-----------------------



Code

#### Sample Ordering Code

with blinds

<b>VSS</b> Product	<b>- C01</b> Size	<b>- 2004</b> Code	<b>- CS00</b> Blind
-----------------------	----------------------	-----------------------	------------------------

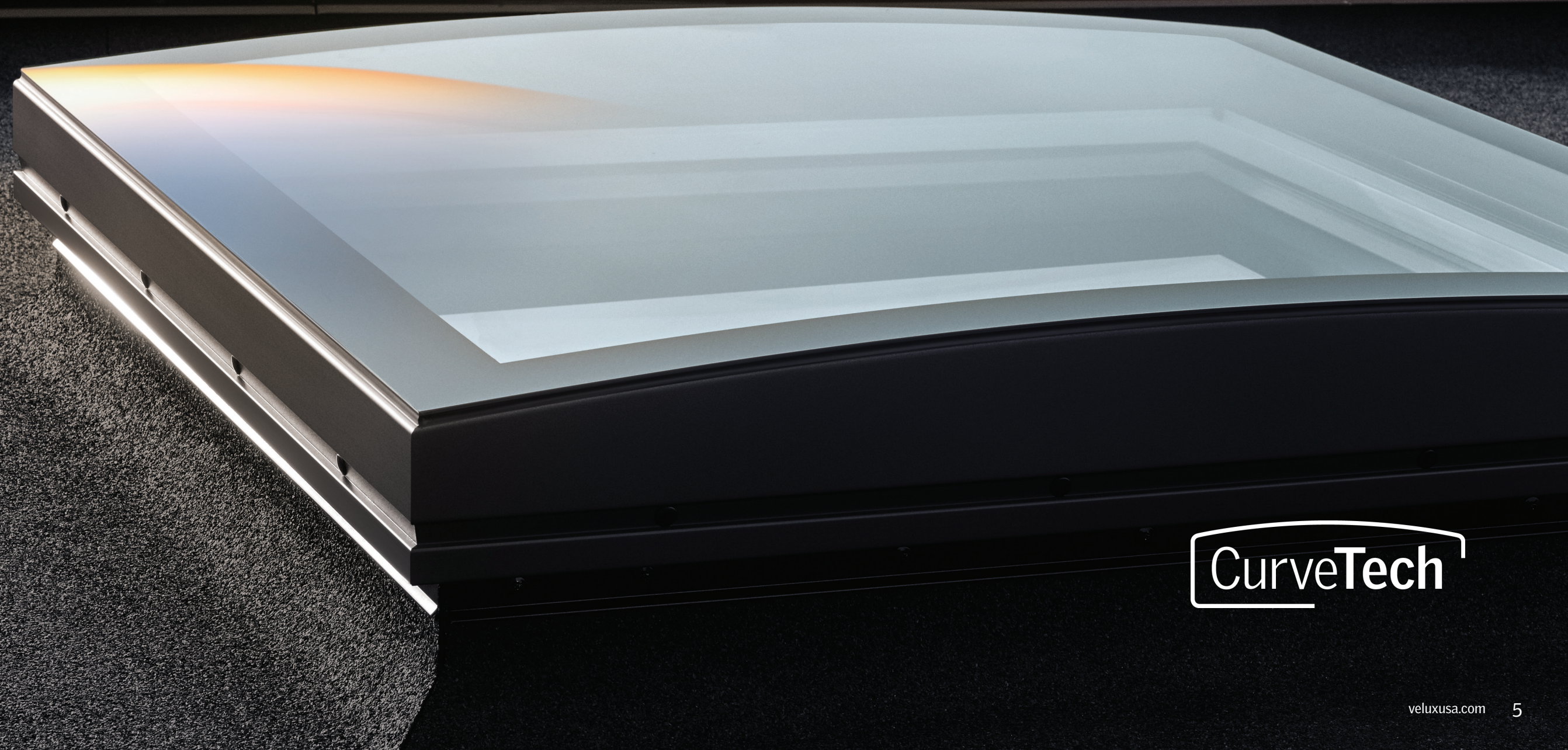
**Prices Effective July 29, 2019** *All retail prices are not valid in Alaska, Hawaii or Mexico due to additional freight cost.*

# Flat Roof Skylights

The innovative and energy-efficient solution for flat roofs.

Many living spaces in flat roof homes get very little natural light, but with a VELUX Flat Roof Skylight, you can easily transform virtually any space with daylight.

*Flat Roof Skylights  
start on page 30*



CurveTech

# VELUX Custom-Sized Skylights

## Taking Your Projects to New Dimensions

VELUX now offers a fully-extended line of custom-sized venting and fixed skylights. With three options to choose from for venting and two options for fixed, you're sure to find a skylight that will accommodate any project you take on.

*For ordering information and to read more about our custom skylights, see product page.*

*EVMS - Solar E-Class - page 12*

*EV - Manual E-Class - page 18*

*FCM - Curb-Mounted Fixed - page 22*

*EF - Fixed E-Class - page 26*

*GSM - SkyMax - page 28*

*CG2 - Acrylic Double Dome - page 30*



# Unit Skylights

## Deck-Mounted VSS/VSE



Eligible  
30%  
Federal tax  
credit\*

**Model - VSS**  
Solar "Fresh Air" Skylight

**Model - VSE**  
Electric "Fresh Air" Skylight

*Insect screen included with skylight*  
*\*For more information visit: veluxusa.com/taxcredit*



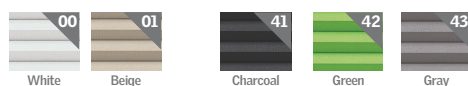
VSS/VSE roof pitch

14° - 85°  
3:12 - 137:12

### Add a solar factory-installed blind\*

*\*Factory-installed blinds not available on copper cladding or stain grade wood models*

#### Room-Darkening - Double-Pleated



2-4 business days delivery Up to 13 business days delivery

Code: CS (solar)

#### Light-Filtering - Single-Pleated



2-4 business days delivery Up to 13 business days shipping

Code: FS (solar)

Order code example - Code + Color = CS00

See page 36 for à la carte blind options

*All base models are available to have factory-installed blinds, however, some optional skylight models may not be available. VELUX customer service will confirm availability.*



### SIZE

Description	C01	C04	C06	C08	M02*	M04	M06	M08	S01	S06
Outside frame W" x H"	21 1/2 x 27 3/8	21 1/2 x 38 3/8	21 1/2 x 46 1/4	21 1/2 x 54 15/16	30 3/16 x 30 1/2	30 3/16 x 38 3/8	30 3/16 x 46 1/4	30 3/16 x 54 15/16	44 3/4 x 27 3/8	44 3/4 x 46 1/4
Rough opening W" x H"	21 x 26 3/8	21 x 37 3/8	21 x 45 3/4	21 x 54 3/8	30 1/16 x 30	30 1/16 x 37 3/8	30 1/16 x 45 3/4	30 1/16 x 54 3/8	44 1/4 x 26 3/8	44 1/4 x 45 3/4

**BASE MODEL** - Clean, Quiet & Safe glass ✓ Meets building code for out-of-reach applications ✓ Features Neat® glass coating to keep your skylight clean ✓ 10-year hail warranty

Description	C01	C04	C06	C08	M02*	M04	M06	M08	S01	S06
Laminated LowE3 Glass Code 2004   Delivery S	.	.	.	.	.	.	.	.	.	.

### OPTIONAL MODELS\*\*

<b>Impact Glass</b> BASE MODEL - Any Size + Code 2006   Delivery N	<b>Copper Cladding<sup>1</sup></b> BASE MODEL - Any Size + Code 2104   Delivery D	<b>Snowload Glass</b> BASE MODEL - Any Size + Code 2010   Delivery A	<b>Stain Grade Wood Interior<sup>2</sup></b> BASE MODEL - Any Size + Code 0004   Delivery D
---	--	---	--

\*Only available in VSS. \*\*Lead time and size availability may vary from base mode. These additional models do not apply to custom sizes.  
<sup>1</sup> Only available on VSE. Not included on M02 size. <sup>2</sup> Only available on VSS.  
Order code example - Product VSS + Size C06 + Code 2004 = VSS - C06 - 2004

### FLASHING - VELUX flashing required for the No Leak Warranty.

Choose flashing by the letter your product size starts with. Example: **C06** choose from the **C SMALL** column

Description - Comes with adhesive underlayment.	C SMALL		M	S
	C01, C04, C06	C08		
<b>Step Flashing</b> Asphalt Shingles, Wood Shakes, or Slate - 1/2 inch maximum thickness Code EDL   Delivery S	.	.	.	.
<b>Copper Step Flashing<sup>1</sup></b> Asphalt Shingles, Wood Shakes, or Slate - 1/2 inch maximum thickness Code EDL COPPER   Delivery D	.	.	.	.
<b>High Profile Flashing</b> - Only available in VSE Tile - Over 3/4 inch thickness Code EDW   Delivery S	.	.	.	.
<b>Metal Roof Flashing</b> Code EDM   Delivery S	.	.	.	.
<b>Bi-pack Flashing</b> Counter Flashing for Deck-Mounted Does not include adhesive underlayment Code ECB   Delivery S	.	.	.	.

Order code example - EDL, EDW, EDM, or ECB + Size = EDL - C06

Google,  
open my skylights.



### The Smart Home Bundle

April 1st - December 31st, 2019

When customers bundle two or more solar or electric skylights with factory-installed blinds and VELUX ACTIVE with NETATMO, they'll receive a free Google Home Hub upon registration. (Compatibility expected SUMMER 2019). For more information, visit veluxusa.com

# Unit Skylights

## Curb-Mounted VCS/VCE



Eligible  
30%  
Federal tax  
credit\*

**Model - VCS**  
Solar "Fresh Air" Skylight

**Model - VCE**  
Electric "Fresh Air" Skylight

*Insect screen included with skylight*  
*\*For more information visit: veluxusa.com/taxcredit*



VCS/VCE roof pitch

0° - 60°  
0:12 - 20:12

Add a solar factory-installed blind

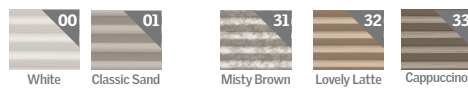
Room-Darkening - Double-Pleated



2-4 business days delivery Up to 13 business days delivery

Code: CS (solar)

Light-Filtering - Single-Pleated



2-4 business days delivery Up to 13 business days delivery

Code: FS (solar)

Order code example - Code + Color = CS00

See page 36 for à la carte blind options

*All base models are available to have factory-installed blinds, however, some optional skylight models may not be available. VELUX customer service will confirm availability.*



### SIZE

Description	2222	2234	2246	3030	3046	3434	4622*	4646
Inside Curb W" x H"	22 ½ x 22 ½	22 ½ x 34 ½	22 ½ x 46 ½	30 ½ x 30 ½	30 ½ x 46 ½	34 ½ x 34 ½	46 ½ x 22 ½	46 ½ x 46 ½
Outside Curb W" x H"	25 ½ x 25 ½	25 ½ x 37 ½	25 ½ x 49 ½	33 ½ x 33 ½	33 ½ x 49 ½	37 ½ x 37 ½	49 ½ x 25 ½	49 ½ x 49 ½
Maximum Skylight Clearance W" x H"	26 ⅝ x 26 ⅝	26 ⅝ x 38 ⅝	26 ⅝ x 50 ⅝	34 ⅝ x 34 ⅝	34 ⅝ x 50 ⅝	38 ⅝ x 38 ⅝	50 ⅝ x 26 ⅝	50 ⅝ x 50 ⅝

**BASE MODEL** - Clean, Quiet & Safe glass ✓ Meets building code for out-of-reach applications ✓ Features Neat® glass coating to keep your skylight clean ✓ 10-year hail warranty

Description	2222	2234	2246	3030	3046	3434	4622*	4646
Laminated LowE3 Glass Code 2004   Delivery S	•	•	•	•	•	•	•	•

### OPTIONAL MODELS\*\*

**Impact Glass\***  
BASE MODEL - Standard size  
+  
Code 2006 | Delivery N

**White Laminated Glass\***  
BASE MODEL - Standard size  
+  
Code 2008 | Delivery N

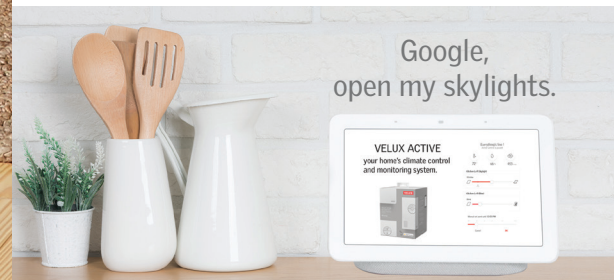
\*Only available in VCS. Not available for 4646 and 4622. \*\*Lead time and size availability may vary from base model. These additional models do not apply to custom sizes.  
Order code example - Product VCS + Size 2222 + Code 2004 = VCM - 2222 - 2004

### FLASHING - VELUX flashing required for the No Leak Warranty.

Choose flashing by the first two numbers of your product size. Example: **3046** choose from the **30** column

Description - Comes with adhesive underlayment.	22	30	34	46
<b>Step Flashing - roof pitch 10° - 60°</b> Asphalt Shingles, Wood Shakes or Slate - ¼ inch maximum thickness Code ECL   Delivery S	•	•	•	•
<b>High Profile Flashing - roof pitch 14° - 60°</b> Tile - Over ¾ inch thickness Code ECW   Delivery S	•	•	•	•

Order code example - ECL or ECW + Size = ECW - 3046



Google,  
open my skylights.

### The Smart Home Bundle

April 1st - December 31st, 2019

When customers bundle two or more solar or electric skylights with factory-installed blinds and VELUX ACTIVE with NETATMO, they'll receive a free Google Home Hub upon registration. (Compatibility expected SUMMER 2019). For more information, visit veluxusa.com

# Unit Skylights

## Slef-Flashed EVMS E-Class



**MODEL - EVMS**  
Solar "Fresh Air" Skylight

*Insect screen included with skylight*

**30%\***  
TAX CREDIT

Eligible for a federal tax credit on product and installation.

*\*For more information visit: [veluxusa.com/taxcredit](http://veluxusa.com/taxcredit)*



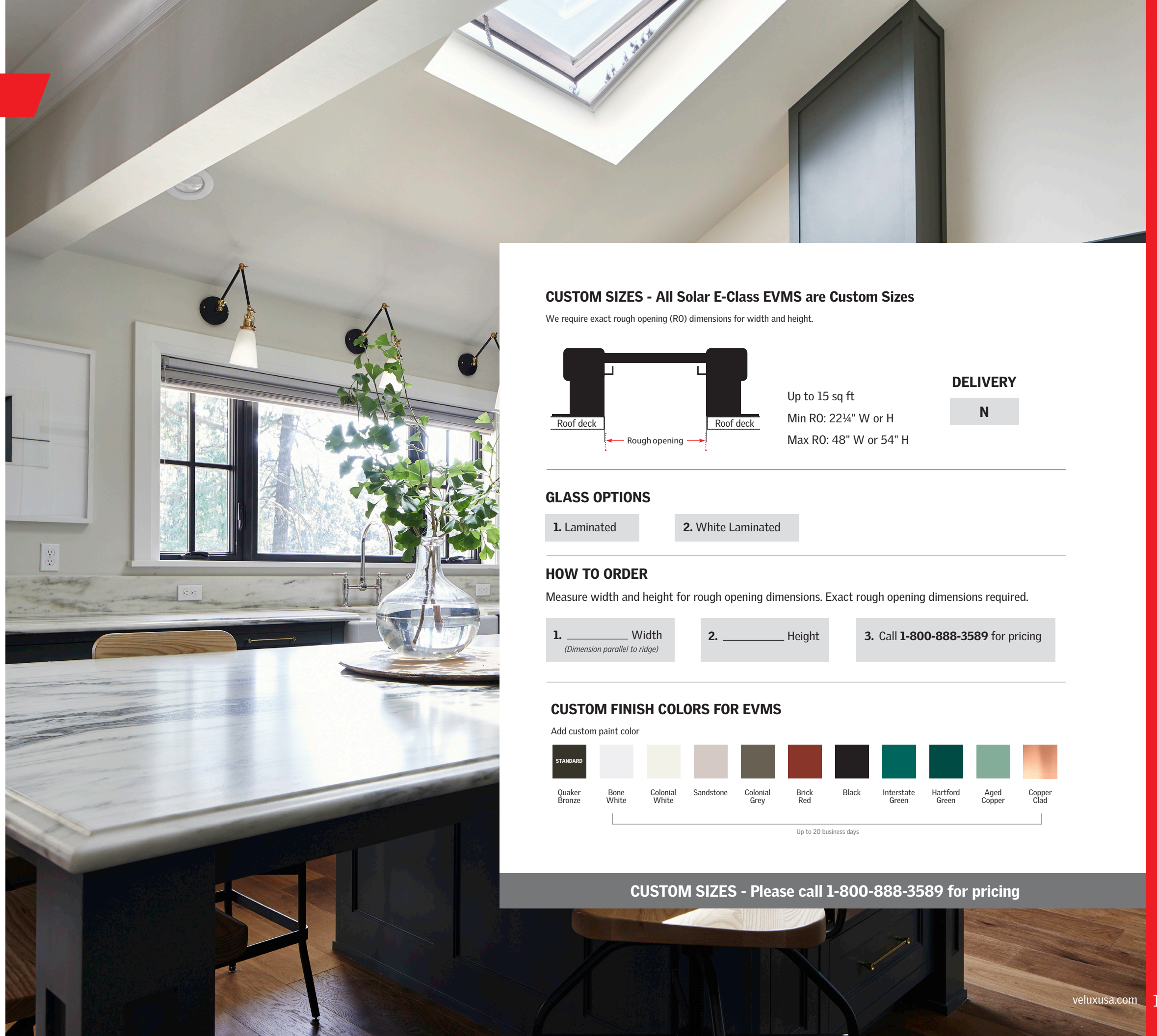
14° - 85°  
3:12 - 137:12

EVMS roof pitch

Ready to install right out of the box on shingle, slate, and wood roofs up to 3/4" thickness

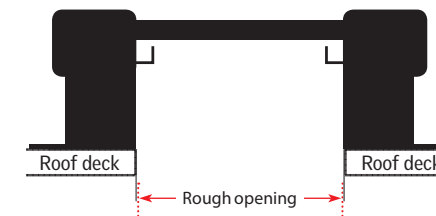
One-piece, impenetrable ultra-seal integrated flashing

Requires no sealants



### CUSTOM SIZES - All Solar E-Class EVMS are Custom Sizes

We require exact rough opening (RO) dimensions for width and height.



Up to 15 sq ft  
Min RO: 22 1/4" W or H  
Max RO: 48" W or 54" H

### DELIVERY

**N**

### GLASS OPTIONS

1. Laminated

2. White Laminated

### HOW TO ORDER

Measure width and height for rough opening dimensions. Exact rough opening dimensions required.

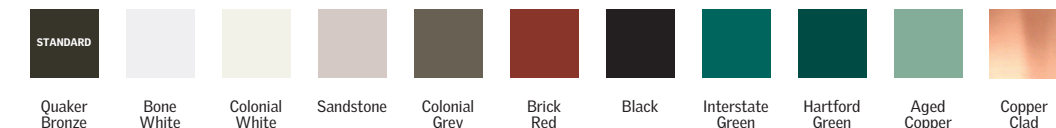
1. \_\_\_\_\_ Width  
*(Dimension parallel to ridge)*

2. \_\_\_\_\_ Height

3. Call **1-800-888-3589** for pricing

### CUSTOM FINISH COLORS FOR EVMS

Add custom paint color



Up to 20 business days

**CUSTOM SIZES - Please call 1-800-888-3589 for pricing**

# Unit Skylights

## Deck-Mounted VS



### MODEL - VS Manual "Fresh Air" Skylight

*Insect screen and operating hook included with skylight  
- use in conjunction with ZCT 300 controll rod*



VS roof pitch

14° - 85°  
3:12 - 137:12

Ready to install right out of the box on shingle, slate and wood roofs up to 3/4 thickness

### Add a solar factory-installed blind

#### Room-Darkening - Double-Pleated



White Beige Charcoal Green Gray  
2-4 business days delivery Up to 13 business days delivery

Code: CS (solar)

#### Light-Filtering - Single-Pleated



White Classic Sand Misty Brown Lovely Latte Cappuccino  
2-4 business days delivery Up to 13 business days delivery

Code: FS (solar)

Order code example - Code + Color = FS00

See page 36 for à la carte blind options

*All base models are available to have factory-installed blinds, however, some optional skylight models may not be available. VELUX customer service will confirm availability.*



### SIZE

Description	C01	C04	C06	C08	M02	M04	M06	M08	S01	S06
Outside frame W" x H"	21 1/2 x 27 3/8	21 1/2 x 38 3/8	21 1/2 x 46 1/4	21 1/2 x 54 15/16	30 3/16 x 30 1/2	30 3/16 x 38 3/8	30 3/16 x 46 1/4	30 3/16 x 54 15/16	44 3/4 x 27 3/8	44 3/4 x 46 1/4
Rough opening W" x H"	21 x 26 3/8	21 x 37 3/8	21 x 45 3/4	21 x 54 7/8	30 1/16 x 30	30 1/16 x 37 3/8	30 1/16 x 45 3/4	30 1/16 x 54 7/8	44 1/4 x 26 3/8	44 1/4 x 45 3/4

**BASE MODEL** - Clean, Quiet & Safe glass ✓ Meets building code for out-of-reach applications ✓ Features Neat® glass coating to keep your skylight clean ✓ 10-year hail warranty

Description	C01	C04	C06	C08	M02	M04	M06	M08	S01	S06
Laminated LowE3 Glass Code 2004   Delivery S	.	.	.	.	.	.	.	.	.	.

### OPTIONAL MODELS\*

<b>Impact Glass</b> BASE MODEL - Standard size + Code 2006   Delivery N	<b>Copper Cladding</b> BASE MODEL - Standard size + Code 2104   Delivery D	<b>Snowload Glass</b> BASE MODEL - Standard size + Code 2010   Delivery A	<b>Stain Grade Wood Interior</b> BASE MODEL - Standard size + Code 0004   Delivery D
--	---	--	---

\*Lead time and size availability may vary from base model. These additional models do not apply to custom sizes.  
Order code example - Product VS + Size C06 + Code 2004 = VS - C06 - 2004



**Add a factory-installed solar blind**  
Harness the power of the sun to control the amount of daylight entering through your skylight.



**Receive a VELUX ACTIVE with NETATMO Gateway + App\*\***  
Allows you to control blinds with your smartphone manually and enable energy efficient automatic operation.

\*\*One VELUX ACTIVE Gateway per order

### Eligible for a 30% tax credit\*

\*For more information visit: [veluxusa.com/go-solar](http://veluxusa.com/go-solar)

Order code example - Product VS + Size C06 + Code 2004 + Blind CS00 = VS - C06 - 2004 - CS00

### FLASHING - VELUX flashing required for the No Leak Warranty.

Choose flashing by the letter your product size starts with. Example: **C06** choose from the **C SMALL** column

Description - Comes with adhesive underlayment.	C SMALL C01, C04, C06	C LARGE C08	M	S
<b>Step Flashing</b> Asphalt Shingles, Wood Shakes, or Slate - 1/2 inch maximum thickness Code EDL   Delivery S	.	.	.	.
<b>Copper Step Flashing</b> Asphalt Shingles, Wood Shakes, or Slate - 1/2 inch maximum thickness Code EDL COPPER   Delivery D	.	.	.	.
<b>High Profile Flashing</b> Tile - Over 3/4 inch thickness Code EDW   Delivery S	.	.	.	.
<b>Metal Roof Flashing</b> Code EDM   Delivery S	.	.	.	.
<b>Bi-pack Flashing</b> Counter Flashing for Deck-Mounted - does not include adhesive underlayment Code ECB   Delivery S	.	.	.	.

Order code example - EDL, EDW, EDM, or ECB + Size = EDL - C06



# Unit Skylights

## Curb-Mounted VCM



**Model - VCM**  
Manual "Fresh Air" Skylight

*Insect screen and operating hook included with skylight*



VCM roof pitch

0° - 60°  
0:12 - 20:12

Add a solar factory-installed blind

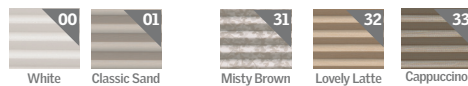
### Room-Darkening - Double-Pleated



White Beige Charcoal Green Gray  
2-4 business days delivery Up to 13 business days delivery

Code: CS (solar)

### Light-Filtering - Single-Pleated



White Classic Sand Misty Brown Lovely Latte Cappuccino  
2-4 business days delivery Up to 13 business days delivery

Code: FS (solar)

Order code example - Code + Color = CS00

See page 36 for à la carte blind options

*All base models are available to have factory-installed blinds, however, some optional skylight models may not be available. VELUX customer service will confirm availability.*



## SIZE

Description	2222	2234	2246	3030	3046	3434	4646
Inside Curb W" x H"	22 1/2 x 22 1/2	22 1/2 x 34 1/2	22 1/2 x 46 1/2	30 1/2 x 30 1/2	30 1/2 x 46 1/2	34 1/2 x 34 1/2	46 1/2 x 46 1/2
Outside Curb W" x H"	25 1/2 x 25 1/2	25 1/2 x 37 1/2	25 1/2 x 49 1/2	33 1/2 x 33 1/2	33 1/2 x 49 1/2	37 1/2 x 37 1/2	49 1/2 x 49 1/2
Max Skylight Clearance W" x H"	26 5/8 x 26 5/8	26 5/8 x 38 5/8	26 5/8 x 50 5/8	34 5/8 x 34 5/8	34 5/8 x 50 5/8	38 5/8 x 38 5/8	50 5/8 x 50 5/8

## BASE MODEL - Clean, Quiet & Safe glass

Description	2222	2234	2246	3030	3046	3434	4646
Laminated LowE3 Glass Code 2004   Delivery S	•	•	•	•	•	•	•

## OPTIONAL MODELS\*

### Impact Glass

BASE MODEL - Standard size

+

Code 2006 | Delivery N

### White Laminated Glass

BASE MODEL - Standard size

+

Code 2008 | Delivery N

\*Lead time and size availability may vary from base model. These additional models do not apply to custom sizes.

Order code example - Product VCM + Size 2222 + Code 2004 = VCM - 2222 - 2004

## IN-REACH APPLICATION MODEL - Tempered glass

Description	2222	2234	2246	3030	3046	3434	4646
Tempered LowE3 Glass Code 2005   Delivery T	•	•	•	•	•	•	•

Order code example - Product VCM + Size 2222 + Code 2005 = VCM - 2222 - 2005



Eligible for a 30% tax credit\*

\*For more information visit: [veluxusa.com/go-solar](http://veluxusa.com/go-solar)

Order code example - Product VCM + Size 2222 + Code 2004 + Blind CS00 = VCM - 2222 - 2004 - CS00



**Add a factory-installed solar blind**  
Harness the power of the sun to control the amount of daylight entering through your skylight.



**Receive a VELUX ACTIVE with NETATMO Gateway + App\*\***  
Allows you to control blinds with your smartphone manually and enable energy efficient automatic operation.

\*\*One VELUX ACTIVE Gateway per order

## FLASHING - VELUX flashing required for the No Leak Warranty.

Choose flashing by the first two numbers of your product size. Example: **3046** choose from the **30** column

Description - Comes with adhesive underlayment.	22	30	34	46
<b>Step Flashing - roof pitch 10° - 60°</b> Asphalt Shingles, Wood Shakes, or Slate - 3/4 inch maximum thickness Code ECL   Delivery S	•	•	•	•
<b>High Profile Flashing - roof pitch 14° - 60°</b> Tile - Over 3/4 inch thickness Code ECW   Delivery S	•	•	•	•

Order code example - ECL or ECW + Size = ECL - 2222

# Unit Skylights

## Self-Flashed EV E-Class



### Model - EV

Manual "Fresh Air" Skylight

*Insect screen and operating hook included with skylight*



EV roof pitch

Ready to install right out of the box on shingle, slate, and wood roofs up to 3/4 thickness

One-piece, impenetrable ultra-seal integrated flashing

Requires no sealants



### SIZE

Description	2222	2230	2238	2246	2254	3030	3046	3054	4646
Rough opening W" x H"	22 1/2 x 22 1/2	22 1/2 x 30 1/2	22 1/2 x 38 1/2	22 1/2 x 46 1/2	22 1/2 x 54 1/2	30 1/2 x 30 1/2	30 1/2 x 46 1/2	30 1/2 x 54 1/2	46 1/2 x 46 1/2

### BASE MODEL - Clean, Quiet & Safe glass

Description	2222	2230	2238	2246	2254	3030	3046	3054	4646
Laminated LowE3 Code 0004   Delivery T	•	•	•N	•	•	•	•	•	•

### OPTIONAL MODEL\*

**White Laminated Glass**  
BASE MODEL - Standard size

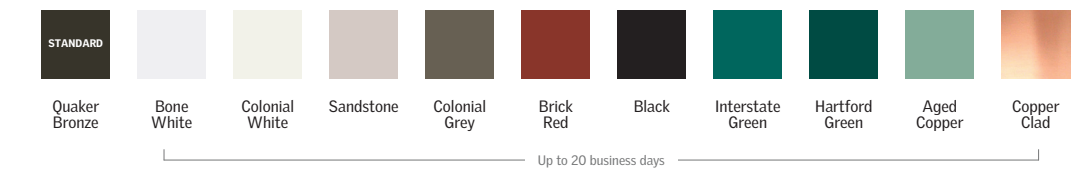
+

Code 2008 | Delivery N

\*Lead time and size availability may vary from base model. These additional models do not apply to custom sizes.

### CUSTOM FINISH COLORS FOR EV

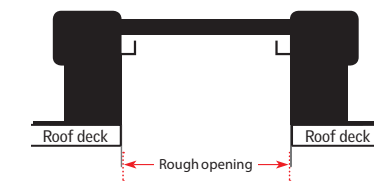
Add custom paint color for \$\*. Add copper cladding for sizes: 1430-2238 \$\* | 2246-3030 \$\* | 3046 - 4646 \$\*



### HOW TO ORDER CUSTOM SIZE

Measure width and height for rough opening dimensions. Exact rough opening dimensions required.

Up to 15 sq ft | Min RO: 22 3/4" W or H | Max RO: 48" W or 54" H



1. \_\_\_\_\_ Width  
*(Dimension parallel to ridge)*

2. \_\_\_\_\_ Height

3. Call **1-800-888-3589** for pricing

DELIVERY  
**N**

**CUSTOM SIZES - Please call 1-800-888-3589 for pricing**

# Unit Skylights

## Deck-Mounted FS



**Model - FS**  
Fixed Skylight

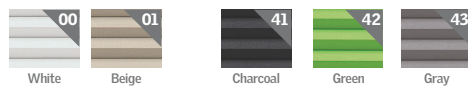


14° - 85°  
3:12 - 137:12

FS roof pitch

### Add a factory-installed blind

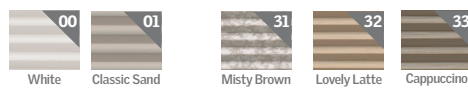
#### Room-Darkening - Double-Pleated



2-4 business days delivery Up to 13 business days delivery

Code: CS (solar) | CH (manual)

#### Light-Filtering - Single-Pleated



2-4 business days delivery Up to 13 business days delivery

Code: FS (solar) | FH (manual)

Venetian  
Manual Only



White

Code: PA

**Solar**  
\$385

**Manual**  
\$185

Order code example - Code + Color = CS00

See page 36 for à la carte blind options

All base models are available to have factory-installed blinds, however, some optional skylight models may not be available. VELUX customer service will confirm availability.



### SIZE

Description	A06	C01	C04	C06	C08	C12 <sup>1</sup>	D26	D06	M02	M04	M06	M08	S01	S06
Outside frame W" x H"	15 1/4 x 46 1/4	21 1/2 x 27 3/8	21 1/2 x 38 3/8	21 1/2 x 46 1/4	21 1/2 x 54 15/16	21 1/2 x 70 3/4	23 1/4 x 23 1/16	23 1/4 x 46 1/4	30 3/16 x 30 1/2	30 3/16 x 38 3/8	30 3/16 x 46 1/4	30 3/16 x 54 15/16	44 3/4 x 27 3/8	44 3/4 x 46 1/4
Rough opening W" x H"	14 1/2 x 45 3/4	21 x 26 7/8	21 x 37 7/8	21 x 45 3/4	21 x 54 1/16	21 x 70 1/4	22 1/2 x 22 9/16	22 1/2 x 45 3/4	30 1/16 x 30	30 1/16 x 37 7/8	30 1/16 x 45 3/4	30 1/16 x 54 7/16	44 1/4 x 26 7/8	44 1/4 x 45 3/4

**BASE MODEL** - Clean, Quiet & Safe glass ✓ Meets building code for out-of-reach applications ✓ Features Neat® glass coating to keep your skylight clean ✓ 10-year hail warranty

Description	A06	C01	C04	C06	C08	C12 <sup>1</sup>	D26	D06	M02	M04	M06	M08	S01	S06
Laminated LowE3 Glass Code 2004   Delivery S	•	•	•	•	•	•	•	•	•	•	•	•	•	•

### OPTIONAL MODELS\*

<b>Impact Glass**</b> BASE MODEL - Standard size + Code 2006   Delivery N	<b>Copper Cladding</b> BASE MODEL - Standard size + Code 2104   Delivery D	<b>Snowload Glass</b> BASE MODEL - Standard size + Code 2010   Delivery A	<b>Stain Grade Wood Interior</b> BASE MODEL - Standard size + Code 0004   Delivery D
--	---	--	---

<sup>1</sup>Factory-installed blinds not available. \*Lead time and size availability may vary from base model These additional models do not apply to custom sizes. \*\*Not available in C12.

Order code example - Product FS + Size C06 + Code 2004 = FS - C06 - 2004



**Add a factory-installed solar blind**  
Harness the power of the sun to control the amount of daylight entering through your skylight.



**Receive a VELUX ACTIVE with NETATMO Gateway + App**  
Allows you to control blinds with your smartphone manually and enable energy efficient automatic operation.

\*\*One VELUX ACTIVE Gateway per order

### Eligible for a 30% tax credit\*

\*For more information visit: [veluxusa.com/go-solar](http://veluxusa.com/go-solar)

Order code example - Product FS + Size C06 + Code 2004 + Blind CS00 = FS - C06 - 2004 - CS00

### FLASHING - VELUX flashing required for the No Leak Warranty.

Choose flashing by the letter your product size starts with. Example: C06 choose from the C SMALL column

Description - Comes with adhesive underlayment.	A	C SMALL	C LARGE	D	M	S
		C01, C04, C06	C08, C12			
<b>Step Flashing</b> Asphalt Shingles, Wood Shakes, or Slate - 1/2 inch maximum thickness Code EDL   Delivery S	•	•	•	•	•	•
<b>Copper Step Flashing</b> Asphalt Shingles, Wood Shakes, or Slate - 1/2 inch maximum thickness Code EDL COPPER   Delivery D	•	•	•	•	•	•
<b>High Profile Flashing</b> Tile - Over 3/4 inch thickness Code EDW   Delivery S	N/A	•	•	•	•	•
<b>Metal Roof Flashing</b> Code EDM   Delivery S	•	•	•	•	•	•
<b>Biopak Flashing</b> - not available for C12 Counter Flashing for Deck-Mounted - does not include adhesive underlayment Code ECB   Delivery S	N/A	•	•	N/A	•	•

Order code example - EDL, EDW, EDM, or ECB + Size = EDL - C06

# Unit Skylights

## Curb-Mounted FCM



**MODEL - FCM**  
Fixed Skylight



FCM roof pitch

### Add a factory-installed blind\*

\* Includes accessory tray. Blinds not available on 1430, 1446.

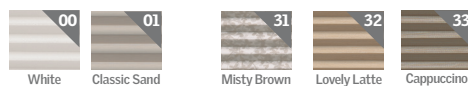
#### Room-Darkening - Double-Pleated



2-4 business days delivery | Up to 13 business days delivery

Code: CS (solar) | CH (manual)

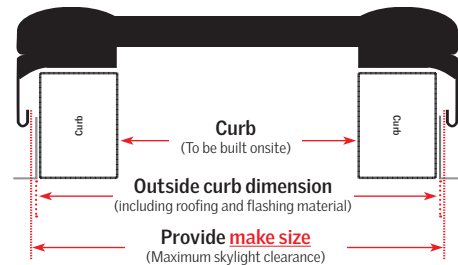
#### Light-Filtering - Single-Pleated



2-4 business days delivery | Up to 13 business days delivery

Code: FS (solar) | FH (manual)

### Custom size FCM



Make size W x L	Width 18 3/4 to 50 3/4
Height 18 3/4 x 72	<b>Delivered in 8-14 days</b>
Height 72 1/4 to 76 1/2	<b>Delivered in 20 days or less</b>

We require maximum skylight clearance dimensions in 1/4" increments (0, 1/4, 1/2, 3/4) for width and height.

Note: Custom size flashing kits and custom size blinds are not available

Note: Some specialty glass options require longer lead times

**Call for pricing and availability**

### SIZE

Description	1430	1446	2222	2230	2234	2246	2270	3030	3046	3434	3446	4646
Inside Curb W" x H"	14 1/2 x 30 1/2	14 1/2 x 46 1/2	22 1/2 x 22 1/2	22 1/2 x 30 1/2	22 1/2 x 34 1/2	22 1/2 x 46 1/2	22 1/2 x 70 1/2	30 1/2 x 30 1/2	30 1/2 x 46 1/2	34 1/2 x 34 1/2	34 1/2 x 46 1/2	46 1/2 x 46 1/2
Outside Curb W" x H"	17 1/2 x 33 1/2	17 1/2 x 49 1/2	25 1/2 x 25 1/2	25 1/2 x 33 1/2	25 1/2 x 37 1/2	25 1/2 x 49 1/2	25 1/2 x 73 1/2	33 1/2 x 33 1/2	33 1/2 x 49 1/2	37 1/2 x 37 1/2	37 1/2 x 49 1/2	49 1/2 x 49 1/2
Maximum Skylight Clearance W" x H"	18 5/8 x 34 5/8	18 5/8 x 50 5/8	26 5/8 x 26 5/8	26 5/8 x 34 5/8	26 5/8 x 38 5/8	26 5/8 x 50 5/8	26 5/8 x 74 5/8	34 5/8 x 34 5/8	34 5/8 x 50 5/8	38 5/8 x 38 5/8	38 5/8 x 50 5/8	50 5/8 x 50 5/8

**BASE MODEL** - Clean, Quiet & Safe glass ✓ Meets building code for out-of-reach applications ✓ Features Neat® glass coating to keep your skylight clean ✓ 10-year hail warranty

Description	1430	1446	2222	2230	2234	2246	2270	3030	3046	3434	3446	4646
<b>Laminated LowE3</b>	•/T	•/T	•	•	•	•	•	•	•	•	•	•
Code <b>0004</b>   Delivery <b>S</b>												

### OPTIONAL MODELS\*

<b>Impact Glass**</b> BASE MODEL - Standard size + Code <b>0006</b>   Delivery <b>N</b>	<b>White Laminated Glass</b> BASE MODEL - Standard size + Code <b>0008</b>   Delivery <b>N</b>	<b>Triple Pane Glass***</b> BASE MODEL - Standard size 2222, 2246, & 4646 + Code <b>0029</b>   Delivery <b>R</b>
--	---	---

\*Lead time and size availability may vary from base model. These additional models do not apply to custom sizes.

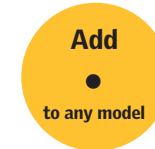
\*\*Not available on 2270. \*\*\*Qualifying sizes 2222, 2246, & 4646. All other sizes, call for pricing.

Order code example - Product FCM + Size 3046 + Code 0004 = FCM - 3046 - 0004

### IN-REACH APPLICATION MODEL - Tempered glass

Description	1430	1446	2222	2230	2234	2246	2270	3030	3046	3434	3446	4646
<b>Tempered LowE3</b>	•	•	•	•	•	•	•	•	•	•	N/A	•
Code <b>0005</b>   Delivery <b>S</b>												

Order code example - Product FCM + Size 3046 + Code 0005 = FCM - 3046 - 0005



**Add a factory-installed solar blind**  
Harness the power of the sun to control the amount of daylight entering through your skylight.



**Receive a VELUX ACTIVE with NETATMO Gateway + App\*\***  
Allows you to control blinds with your smartphone manually and enable energy efficient automatic operation.

\*\*One VELUX ACTIVE Gateway per order

### Eligible for a 30% tax credit\*

\*For more information visit: [veluxusa.com/go-solar](http://veluxusa.com/go-solar)

Order code example - Product FCM + Size 2222 + Code 0004 + Blind CS00 = FCM - 2222 - 0004 - CS00

### FLASHING - VELUX flashing required for the No Leak Warranty.

Choose flashing by the first two numbers of your product size. Example: **3046** choose from the **30** column

Description - Comes with adhesive underlayment.	14	22	30	34	46
<b>Step Flashing - roof pitch 10° - 60°</b> Asphalt Shingles, Wood Shakes, or Slate 3/4 inch maximum thickness Code <b>ECL</b>   Delivery <b>S</b>	•	•	•	•	•
<b>High Profile Flashing - roof pitch 14° - 60°</b> Tile - Over 3/4 inch thickness Code <b>ECW</b>   Delivery <b>S</b>	•	•	•	•	•

Order code example - ECL or ECW + Size = ECL - 3046

All base models are available to have factory-installed blinds, however, some optional skylight models may not be available. VELUX customer service will confirm availability.

# Unit Skylights

## Self-Flashed QPF



**Model - QPF**  
Fixed Skylight



14° - 60°  
3:12 - 20:12

QPF roof pitch  
Designed for use with asphalt shingles

### Add a factory-installed blind

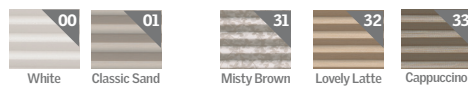
#### Room-Darkening - Double-Pleated



White Beige Charcoal Green Gray  
2-4 business days delivery Up to 13 business days delivery

Code: CS (solar) | CH (manual)

#### Light-Filtering - Single-Pleated



White Classic Sand Misty Brown Lovely Latte Cappuccino  
2-4 business days delivery Up to 13 business days delivery

Code: FS (solar) | FH (manual)

All base models are available to have factory-installed blinds, however, some optional skylight models may not be available. VELUX customer service will confirm availability.



### SIZE

Description	2222	2230	2246	3030	3046	4646
Outside Flashing W" x H"	24 3/16 x 24 3/16	24 3/16 x 32 3/16	24 3/16 x 48 3/16	32 3/16 x 32 3/16	32 3/16 x 48 3/16	48 3/16 x 48 3/16
Rough Opening/ Finished Frame W" x H"	22 1/2 x 22 1/2	22 1/2 x 30 1/2	22 1/2 x 46 1/2	30 1/2 x 30 1/2	30 1/2 x 46 1/2	46 1/2 x 46 1/2

**BASE MODEL - Clean, Quiet & Safe glass** ✓ Meets building code for out-of-reach applications ✓ Features Neat® glass coating to keep your skylight clean ✓ 10-year hail warranty

Description	2222	2230	2246	3030	3046	4646
<b>Laminated LowE3 Glass</b> Code 2004   Delivery S	•	•	•	•	•	•

### OPTIONAL MODELS\*

**Impact Glass**  
BASE MODEL - Standard size

+  
Code 2006 | Delivery N

**White Laminated Glass**  
BASE MODEL - Standard size

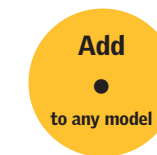
+  
Code 2008 | Delivery N

\*Lead time and size availability may vary from base model. These additional models do not apply to custom sizes.  
Order code example - Product QPF + Size 2222 + Code 2004 = QPF - 2222 - 2004

### IN-REACH APPLICATION MODEL - Tempered glass

Description	2222	2230	2246	3030	3046	4646
<b>Tempered LowE3 Glass</b> Code 2005   Delivery S	•	•	•	•	•	•

Order code example - Product QPF + Size 2222 + Code 2005 = QPF - 2222 - 2005



Eligible for a 30% tax credit\*

\*For more information visit: [veluxusa.com/go-solar](http://veluxusa.com/go-solar)

Order code example - Product QPF + Size 2222 + Code 2004 + Blind CS00 = QPF - 2222 - 2004 - CS00



**Add a factory-installed solar blind**

Harness the power of the sun to control the amount of daylight entering through your skylight.



**Receive a VELUX ACTIVE with NETATMO Gateway + App\*\***

Allows you to control blinds with your smartphone manually and enable energy efficient automatic operation.

\*\*One VELUX ACTIVE Gateway per order

# Unit Skylights

## Self-Flashed EF E-Class



**Model - EF**  
Fixed Skylight



EF roof pitch

Add a factory-installed blind\*  
\*Blinds not available on 2238, 2254, 3054

Room-Darkening - Double-Pleated

White	Beige	Charcoal	Green	Gray

2-4 business days delivery      Up to 13 business days delivery

Code: CS (solar) | CH (manual)

Light-Filtering - Single-Pleated

White	Classic Sand	Misty Brown	Lovely Latte	Cappuccino

2-4 business days delivery      Up to 13 business days delivery

Code: FS (solar) | FH (manual)

Order code example - Code + Color = FS00

**Solar**  
**\$425**

Includes accessory tray

See page 36 for à la carte blind options

All base models are available to have factory-installed blinds, however, some optional skylight models may not be available. VELUX customer service will confirm availability.



### SIZE

Description	1430	1446	2222	2230	2238	2246	2254	3030	3046	3054	4646
Rough opening W" x H"	14 1/2 x 30 1/2	14 1/2 x 46 1/2	22 1/2 x 22 1/2	22 1/2 x 30 1/2	22 1/2 x 38 1/2	22 1/2 x 46 1/2	22 1/2 x 54 1/2	30 1/2 x 30 1/2	30 1/2 x 46 1/2	30 1/2 x 54 1/2	46 1/2 x 46 1/2

### BASE MODEL - Clean, Quiet & Safe glass

Description	1430	1446	2222	2230	2238	2246	2254	3030	3046	3054	4646
<b>Laminated LowE3</b> Code 2004   Delivery S*/T	N/A	N/A	•	•	•N	•	•N	•	•	•N	•

\*S for east coast locations

### OPTIONAL MODELS\*

Impact Glass BASE MODEL - Standard size + Code 2006   Delivery N	White Laminated Glass BASE MODEL - Standard size + Code 2008   Delivery N
---	--

\*Lead time and size availability may vary from base model. These additional models do not apply to custom sizes.  
Order code example - Product EF + Size 3046 + Code 0004 = EF - 3046 - 2004

### CUSTOM FINISH COLORS FOR EF

Add custom paint color for \$138. Add copper cladding for sizes: 1430-2238 \$• | 2246-3030 \$• | 3046 - 4646 \$•

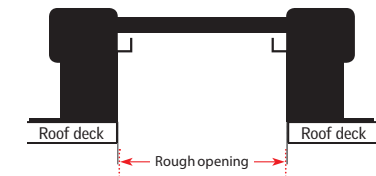
STANDARD	Quaker Bronze	Bone White	Colonial White	Sandstone	Colonial Grey	Brick Red	Black	Interstate Green	Hartford Green	Aged Copper	Copper Clad

Up to 20 business days

### HOW TO ORDER CUSTOM SIZE

Measure width and height for rough opening dimensions.  
Exact rough opening dimensions required.

Up to 15 sq ft | Min RO: 22 1/4" W or H | Max RO: 48" W or 54" H



1. \_\_\_\_\_ Width  
(Dimension parallel to ridge)
  2. \_\_\_\_\_ Height
  3. Call 1-800-888-3589 for pricing
- DELIVERY N



Eligible for a 30% tax credit\*

\*For more information visit: [veluxusa.com/go-solar](http://veluxusa.com/go-solar)



**Add a factory-installed solar blind**  
Harness the power of the sun to control the amount of daylight entering through your skylight.



**Receive a VELUX ACTIVE with NETATMO Gateway + App\*\***  
Allows you to control blinds with your smartphone manually and enable energy efficient automatic operation.

\*\*One VELUX ACTIVE Gateway per order

# Unit Skylights

## Curb-Mounted GSM SkyMax

**NEW!**



**Model - GSM**  
Fixed Skylight



1° - 60°  
¼:12 - 137:12

GSM roof pitch

**32**  
SQ FT

Custom sizes up to 32 sq. ft.  
for SkyMax Skylights

Sizes are based upon the  
outside curb dimension (OCD)

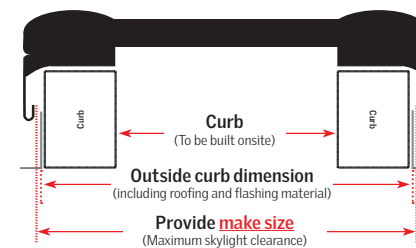
For use with site-built curb and flashing  
Minimum 3 ½" Curb

Quaker Bronze paint finish is standard. Custom  
finish colors and copper cladding available



### CUSTOM SIZES - All Curb-Mounted GSM SkyMax Skylights Are Custom Sizes

We require exact outside curb dimensions for width and height.



Up to 32 sq ft, up to 10' at longest dimension  
Minimum OCD: 17 1/2" W or H  
Maximum OCD: 120" W or H

### GLASS OPTIONS - Standard Glass\*

1. Solarban 70XL Clear\*\*
2. Solarban 70XL Gray
3. Solarban 70XL Bronze

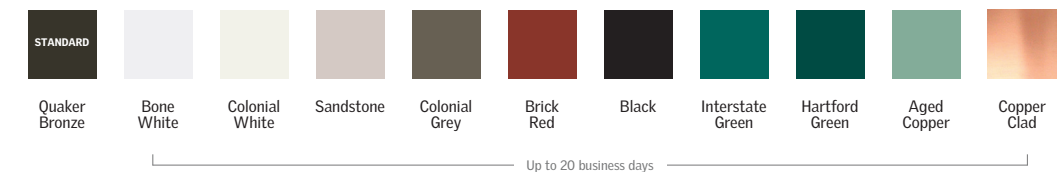
\*Optional Energy Advantage - Room Side Low-e \*\*Also available in white laminated

### HOW TO ORDER

Measure width and height for rough opening dimensions. Exact outside curb dimensions required.

1. \_\_\_\_\_ Width  
*(Dimension parallel to ridge)*
2. \_\_\_\_\_ Height
3. Call **1-800-888-3589** for pricing

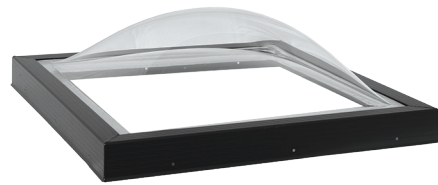
### CUSTOM FINISH COLORS FOR SKYMAX



**CUSTOM SIZES - Please call 1-800-888-3589 for pricing**

# Flat Roof Skylights

## Curb-Mounted CG2



### Model - CG2

Acrylic Double Dome Skylight  
*(old model CMA)*



CG2 roof pitch

Neutral grey exterior color

Encapsulated inner frame is 100% thermally broken



### SIZE

Description <i>(previous size)</i>	225225 <i>(2525)</i>	225465 <i>(2549)</i>	305305 <i>(3333)</i>	345345 <i>(3737)</i>	465465 <i>(4949)</i>
Outside Curb W" x H"	25 1/2 x 25 1/2	25 1/2 x 49 1/2	33 1/2 x 33 1/2	37 1/2 x 37 1/2	49 1/2 x 49 1/2
Maximum Skylight Clearance W" x H"	26 11/16 x 26 11/16	26 11/16 x 50 11/16	34 11/16 x 34 11/16	38 11/16 x 38 11/16	50 11/16 x 50 11/16
Glazings	Code	\$/Delivery	\$/Delivery	\$/Delivery	\$/Delivery
Clear over clear	<b>0A1A1S</b>	•/S	•/S	•/S	•/S
Bronze over clear	<b>0A4A1M</b>	•/R	•/R	•/R	•/R
Clear over white	<b>0A1A2M</b>	•/R	•/R	•/R	•/R

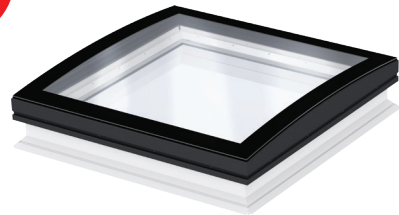
**CUSTOM SIZES - Please call 1-888-878-3589 for pricing**



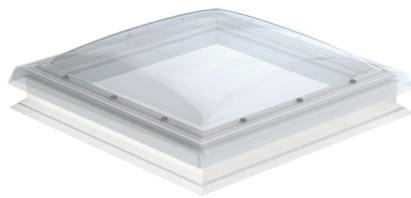
# Flat Roof Skylights

## Curb-Mounted CFP/CXP

**NEW!**



**CFP Fixed Base with CurveTech Protective Top Cover**



**CFP Fixed Base with Polycarbonate Protective Top Cover**



**CXP Hatch with Polycarbonate Protective Cover**



CFP/CXP roof pitch

0° - 15°  
0:12 - 3:12



### 1 CFP Fixed Base Unit + 2 ISD Top Cover = Flat Roof Skylight\*



- Fixed CFP**
- Insulated PVC frame
  - Laminated thermal pane for added safety, sound control, and thermal protection



- Curved Glass ISD 1093**
- CurveTech glass lets rainwater easily roll off for a clean look while preventing leaks
  - Tempered glass is virtually scratch-proof, providing a durable layer of protection
  - Unique curved glass with a modern and innovative design



- Polycarbonate ISD 0010**
- Durable, impact-resistant polycarbonate
  - Edge-to-edge counter flashing leak protection
  - Rain rolls off easily for a clean look

#### SIZE CFP

Description	060060	060090	080080	090120	120120	150150
Rough Opening W" x H"	23 5/8 x 23 5/8	23 3/8 x 35 7/16	31 1/2 x 31 1/2	35 7/16 x 47 1/4	47 1/4 x 47 1/4	59 x 59
Exterior Frame W" x H"	30 11/16 x 30 11/16	30 11/16 x 42 1/2	38 9/16 x 38 9/16	42 1/2 x 54 3/16	54 3/16 x 54 3/16	66 1/8 x 66 1/8
Base Unit CFP (Required)	060060	060090	080080	090120	120120	150150
1 Fixed CFP Code <b>0073QV</b>   Delivery <b>G</b>	•	•	•	•	•	•
Choose ISD Top Cover	060060	060090	080080	090120	120120	150150
Curved Glass ISD Code <b>1093</b>   Delivery <b>G</b>	•	•	•	•	•	N/A
2 Polycarbonate ISD Code <b>0010</b>   Delivery <b>G</b>	•	•	•	•	•	•

\* Must order both base unit and top cover to make a complete skylight unit. Base and cover will ship and invoice separately.

#### CXP Hatch With Polycarbonate



- Hatch CXP with Polycarbonate ISD 0010**
- Insulated PVC frame
  - Laminated thermal pane for added safety, sound control, and thermal protection
  - Opens manually up to 60° for roof access

#### SIZE CXP

Description	090120	100100	120120
Rough Opening W" x H"	35 7/16 x 47 1/4	39 3/8 x 39 3/8	47 1/4 x 47 1/4
Exterior Frame W" x H"	42 1/2 x 54 3/16	46 7/16 x 46 7/16	54 3/16 x 54 3/16
Top cover	090120	100100	120120
Polycarbonate ISD Code <b>0010</b>   Delivery <b>G</b>	•	•	•
Base unit (Required)	090120	100100	120120
Hatch CFP Code <b>0473Q</b>   Delivery <b>G</b>	•	•	•

# Skylight Flashing

## Deck-Mounted Combi-Flashing™



### MODEL - EKL

low-profile roofing material  
*shingles and shakes*

### MODEL - EKW

high-profile roofing material  
*tile or corrugated metal roofing*



14° - 85°  
3:12 - 137:12

EKL/EKW roof pitch

Combi-Flashing™ allows for large installations of multiple skylights

Must specify vertical gutter spacing when ordering. May be from 2.5" to 12" in ½" increments  
Combi-Flashings™ with gutters 4.5" or wider have additional charges.

Only the 2.5", 3", 3.5" and 4" gutters will be stocked; all other widths are special order and carry a 15-day production time.

EKW 4" gutter only  
1x combinations 4" gutter only

Gutter sizes are frame to frame - RO to RO will be ½" larger ex. 3" gutter = 3.5" RO to RO



### SIZE

Description	C01	C04	C06	C08	C12	M02	M04	M06	M08	S01	S06
<b>1 by 2 Flashing Configuration</b>											
EKL Low-Profile Delivery T	.	.	.	.	.	.	.	.	.	.	.
<b>1 by 3 Flashing Configuration</b>											
EKL Low-Profile Delivery T	.	.	.	.	.	.	.	.	.	.	.
<b>2 by 1 Flashing Configuration</b>											
EKL Low-Profile Delivery T	.	.	.	.	.	.	.	.	.	.	.
	Call	Call	Call	N/A	N/A	Call	Call	Call	Call	Call	Call
<b>2 by 2 Flashing Configuration</b>											
EKL Low-Profile Delivery T	.	.	.	.	.	.	.	.	.	.	.
<b>2 by 3 Flashing Configuration</b>											
EKL Low-Profile Delivery T	.	.	.	.	.	.	.	.	.	.	.
<b>3 by 1 Flashing Configuration</b>											
EKL Low-Profile Delivery T	.	.	.	.	.	.	.	.	.	.	.
	Call	Call	Call	N/A	N/A	Call	Call	Call	Call	Call	Call
<b>3 by 2 Flashing Configuration</b>											
EKL Low-Profile Delivery T	.	.	.	.	.	.	.	.	.	.	.
<b>4 by 1 Flashing Configuration</b>											
EKL Low-Profile Delivery T	.	.	.	.	.	.	.	.	.	.	.
	Call	Call	Call	N/A	N/A	Call	Call	Call	Call	Call	Call

Many other combinations can be made beyond what is listed in the pricing chart. Call customer service for more combi-flashing™ options and pricing. Measurement must be taken from rough opening to rough opening.

Large orders may require longer lead times. Combi-flashings™ are not available for models FCM, VCM, VCE, QPF, or VCS. VSS only available in side-by-side applications.

# Skylight Accessories

## Blinds



How to find the model and size code on your skylight.

**Room-Darkening Double-Pleated**

Unique honeycomb structure that will block bright sunlight.

**Light-Filtering Single-Pleated**

Softly diffuse the natural light with a single-pleated blind.

**Venetian**

Horizontal slats make it easy to control the light in any room.

## In-Stock Solar-Powered Blinds - \$385 any size

Blind type	Room-Darkening, Double-Pleated		Light-Filtering, Single-Pleated	
Skylight	Blind Model	Price	Blind Model	Price
VSS/VSE	FSCH	•	FSLH	•
VS	FSCH	•	FSLH	•
FS*	FSCD	•	FSLD	•
VCS/VCE/VCM	FSCC	•	FSLC	•
FCM* accessory tray needed	FSCC	+•	FSLC	+•
QPF	FSCC	•	FSLC	•

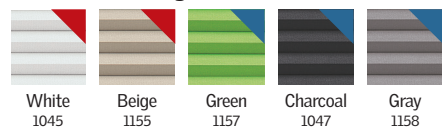
\*1430 and 1446 not available

## In-Stock Manual Blinds - \$185 any size

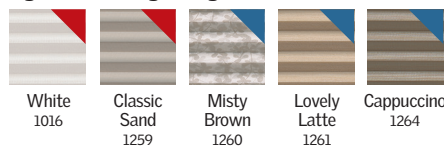
Blind type	Room-Darkening, Double-Pleated		Light-Filtering, Single-Pleated		Venetian	
Skylight	Blind Model	Price	Blind Model	Price	Blind Model	Price
FS*	FHCD	•	FHLD	•	PAD	•
FCM* accessory tray needed	FHCC	+•	FHLC	+•	PAC	+•
QPF	FHCC	•	FHLC	•	PAC	•

\*1430 and 1446 not available

### Room-Darkening, Double-Pleated Blinds



### Light-Filtering, Single-Pleated Blinds



### Venetian Blinds - Manual



## Special Order Solar-Powered Blinds - \$460 any size

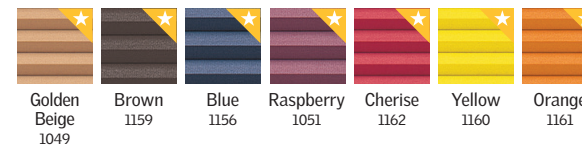
Blind type	Room-Darkening, Double-Pleated		Light-Filtering, Single-Pleated		Blackout, Flat Fabric	
	Blind Model	Price	Blind Model	Price	Blind Model	Price
VSS/VSE	FSCH	•	FSLH	•	DSH	•
VS	FSCH	•	FSLH	•	DSH	•
FS	FSCD	•	FSLD	•	DSD	•
VCS/VCE/VCM	FSCC	•	FSLC	•	DSC	•
FCM accessory tray needed	FSCC	+•	FSLC	+•	DSC	+•
QPF	FSCC	•	FSLC	•	DSC	•

## Special Order Manual Blinds - \$260 any size

Blind type	Room-Darkening, Double-Pleated		Light-Filtering, Single-Pleated		Venetian	
Skylight	Blind Model	Price	Blind Model	Price	Blind Model	Price
FS	FHCD	•	FHLD	•	PAD	•
FCM accessory tray needed	FHCC	+•	FHLC	+•	PAC	+•
QPF	FHCC	•	FHLC	•	PAC	•
GPU/GXU/GGU*	FHC	•	FHL	•	PAL	•

\*Subject to longer lead time up to 8 weeks

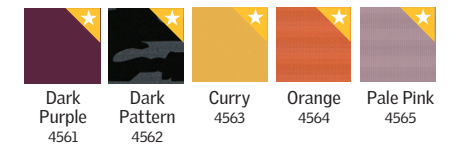
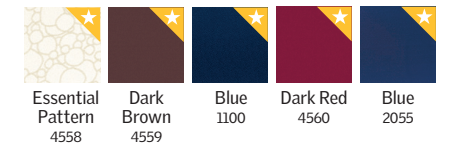
### Room-Darkening, Double-Pleated Blinds



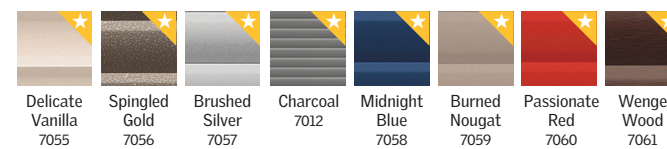
### Blackout Blinds, Flat Fabric



### Light Filtering, Single-Pleated Blinds



### Venetian Blinds - Manual, Blind slats measure 1.375"



In-stock blinds ship directly with your skylights. Please allow **2-4 business days for delivery**.

In-stock blinds ship directly with your skylights. Please allow up to **13 business days for delivery**.

Special order blinds ship separately from your skylights. Please allow **14 business days for delivery**. Special order blinds are non-returnable and non-refundable.

# Skylight Accessories

## Home Automation

### VELUX ACTIVE Starter Kit

Includes Climate Sensor, Departure Switch, and Internet Gateway



Model	Price	Delivery
KIX 300 US	•	S

### VELUX ACTIVE Indoor Climate Sensor

Additional sensor for other rooms with VELUX skylights



Model	Price	Delivery
KLA 300 US	•	S

### VELUX ACTIVE Departure Switch

Additional departure switch



Model	Price	Delivery
KLN 300 US	•	S

### Home Automation Integration Kit

Wirelessly control up to five groups of solar/electric-powered skylights or blind



Model	Price	Delivery
KLF 200 US	•	S

## Remotes & Electric

### Basic Remote Control

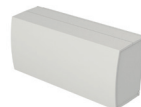
Remote control allows users to operate skylights or blinds from anywhere in the room



Model	Price	Delivery
KLI 310 US	•	S

### Battery Backup

Provides limited operation of VSE, VCE skylights and electric blinds during power outages



Model	Price	Delivery
KLB 100 WW	•	S

## Installation Accessories

### Trim Kit

Three 57 1/2" pieces one kit works for most sizes



Model	Price	Delivery
ZZZ 213B	•	S

### Blind Accessory Tray

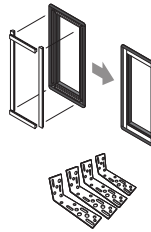
Needed for blind installation on fixed curb-mounted skylights (2222-4646). 2270 size now available when ordered separately



Model	Price	Delivery
ZZZ 199 + size	•	S

### Replacement Kit

4 pre-cut drywall groove filler pieces and 4 structural brackets. Use in deck-mounted applications Sizes: C01, C04, C06, C08, D06, D26, M02, M04, M06, M08, S01, S06



Model	Price	Delivery
ZZZ 238 + size	•	S

### Sun Screen Adapter Kit

Allows skylight models manufactured prior to January 1, 2010 to have special order blinds. V-venting, F-fixed



Model	Price	Delivery
ZZZ 232V	•	T
ZZZ 232F	•	T

### Structural Brackets

4 brackets

Use in deck-mounted applications with an oversized rough opening



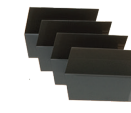
Model	Price	Delivery
ZZZ 219	•	T

## Installation Accessories

### Additional Step Flashing

Deck/Curb

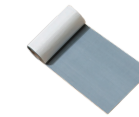
Deck-mounted = 14 pieces - ZZZ 200 0000  
Curb-mounted = 11 pieces - ZZZ 200 0000C



Model	Price	Delivery
ZZZ 200 0000	•	S
ZZZ 200 0000C	•	S

### Adhesive Underlayment

9" x 26' per roll



Model	Price	Delivery
ZOZ 216 L	•	S

## Manual Controls

### Telescopic Rod 6'-10'

for Manual Skylights

For VS and VCM skylights from 1982 to present and sun screen accessories made previous to 2010



Model	Price	Delivery
ZCT 300	•	S

### Telescopic Rod 3'-6'

for Manual Blinds

For operation of manual sun screen accessories



Model	Price	Delivery
ZXT 200	•	S

### Universal Extension 3'

Extension piece for telescopic rods. Extends control rods for an additional 3'.



Model	Price	Delivery
ZCT 100	•	S

## Manual Controls

### VS/VCM Crank Handle

Operate in-reach manual venting skylight  
VS - ZZZ 201 VCM - ZZZ 212



Model	Price	Delivery
ZZZ 201 (VS)	•	S
ZZZ 212 (VCM)	•	S

### VS/VCM Replacement Hook

Replacement hook for out-of-reach manual venting skylight



Model	Price	Delivery
ZZZ 202 (VS)	•	S
ZZZ 211 (VCM)	•	S

### Extension

Chain Operator

Extension for manual crank handle or manual angle adaptor to make skylights easier to operate.



Model	Price	Delivery
ZZZ 208	•	S

### Angle Adaptor

for Chain Operator

Used in conjunction with the manual hook for out-of-reach applications to make the skylight easier to operate with a manual pole



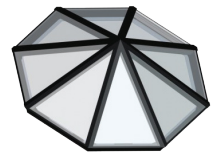
Model	Price	Delivery
ZZZ 203	•	S

# Architectural Sklights

## Architectural Series



Double Pitch



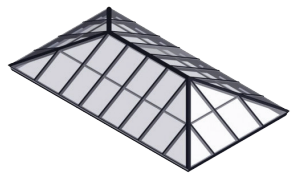
Octagonal Pyramid



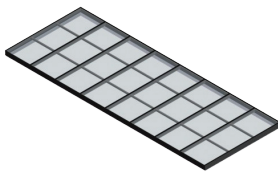
Structural Bridge



Square Pyramid



Extended Pyramid



Single Pitch



### CUSTOM SIZES

All Architectural Series are Custom Built

- Unlimited design capabilities to create spectacular daylighting applications.
- Capable of spanning span up to 40 feet.
- Broad range of interior and exterior finishes to choose from.
- Broad range of glass options to select from, including hurricane-rated, electrochromic, photovoltaic, and insulated glass, or cellular polycarbonate with option for aerogel fill.
- Available in standard or custom sizes, both with reliable engineering, construction and installation.
- All available at an affordable price.

Call 1-888-878-3589 for more information and pricing

# Architectural Skylights

## Architectural Series



Low Profile

Extensive line of configurations, finish colors, and glazing options

Glazing options include hurricane-rated, electrochromic, photovoltaic, and insulated glass, or cellular polycarbonate with or without aerogel fill

On-site engineering assistance and daylight analysis available



### CUSTOM SIZES All Architectural Series are Custom Built

- Unlimited design possibilities to create spectacular daylighting applications.
- Extensive selection of configurations, finish colors, and glazing options.
- Developed for pitch-roof. Aluminum frame is fixed on top of existing roof rafters.
- Pre-fabricated, thermally-broken frame for easy assembly.
- Minimum roof pitch required is  $\frac{3}{12}$ .

Call 1-888-878-3589 for more information and pricing

# Architectural Skylights

## VELUX Modular Longlights



**Model - VMS**  
Fixed Skylights

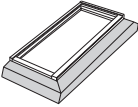
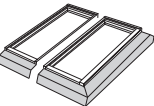
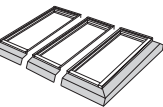
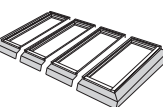

10-year guarantee on  
VELUX Modular Skylights

5-year guarantee on  
blinds, actuators, and other electrical components


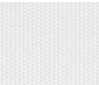

Preconfigured systems up to 10 modules. Larger  
systems available call 1-844-994-6867 for pricing.



### Fixed 5° Longlights - roof pitch between 0°- 10° \*

Description	Code	Module Size W x H*	Opening W x H*	Price
 One fixed longlight, complete with all flashing components.**	HFC 100120 SL0017	39 5/16" x 47 3/16"	41 9/16" x 51"	•
	HFC 100160 SL0017	39 5/16" x 63"	41 9/16" x 67"	•
	HFC 100200 SL0017	39 5/16" x 78 10/16"	41 9/16" x 83"	•
	HFC 100240 SL0017	39 5/16" x 94 8/16"	41 9/16" x 98"	•
 Two fixed longlights, complete with all flashing components.**	HFC 100120 SL0018	39 5/16" x 47 3/16"	81" x 51"	•
	HFC 100160 SL0018	39 5/16" x 63"	81" x 67"	•
	HFC 100200 SL0018	39 5/16" x 78 10/16"	81" x 83"	•
	HFC 100240 SL0018	39 5/16" x 94 1/2"	81" x 98"	•
 Three fixed longlights, complete with all flashing components.**	HFC 100120 SL0019	39 5/16" x 47 3/16"	120 4/16" x 51"	•
	HFC 100160 SL0019	39 5/16" x 63"	120 4/16" x 67"	•
	HFC 100200 SL0019	39 5/16" x 78 10/16"	120 4/16" x 83"	•
	HFC 100240 SL0019	39 5/16" x 94 8/16"	120 4/16" x 98"	•
 Four fixed longlights, complete with all flashing components.**	HFC 100120 SL0020	39 5/16" x 47 3/16"	159 10/16" x 51"	•
	HFC 100160 SL0020	39 5/16" x 63"	159 10/16" x 67"	•
	HFC 100200 SL0020	39 5/16" x 78 10/16"	159 10/16" x 83"	•
	HFC 100240 SL0020	39 5/16" x 94 8/16"	159 10/16" x 98"	•
 10 fixed longlights, complete with all flashing components.**	HFC 100120 SL0021	39 5/16" x 47 3/16"	395 14/16" x 51"	•
	HFC 100160 SL0021	39 5/16" x 63"	395 14/16" x 67"	•
	HFC 100200 SL0021	39 5/16" x 78 10/16"	395 14/16" x 83"	•
	HFC 100240 SL0021	39 5/16" x 94 8/16"	395 14/16" x 98"	•

### Blinds

Description	Code	Color	Size W x H*	Price
 Electrically-Operated Roller Blind	RMM 100120 4083A	Grey	39 5/16" x 47 3/16"	•
	RMM 100160 4083A	Grey	39 5/16" x 63"	•
	RMM 100200 4083A	Grey	39 5/16" x 78 10/16"	•
	RMM 100240 4083A	Grey	39 5/16" x 94 1/2"	•
 Electrically-Operated Roller Blind	RMM 100120 4084A	White	39 5/16" x 47 3/16"	•
	RMM 100160 4084A	White	39 5/16" x 63"	•
	RMM 100200 4084A	White	39 5/16" x 78 10/16"	•
	RMM 100240 4084A	White	39 5/16" x 94 1/2"	•
 Electrically-Operated Roller Blind	RMM 100120 4085A	Black	39 5/16" x 47 3/16"	•
	RMM 100160 4085A	Black	39 5/16" x 63"	•
	RMM 100200 4085A	Black	39 5/16" x 78 10/16"	•
	RMM 100240 4085A	Black	39 5/16" x 94 1/2"	•

Delivery time approximately 8-10 weeks for product and blinds

\*Assumes 0° roof pitch. \*\*The installer is responsible for curb-flashing material and installation of the curb to the roof. Installer may want to consider the use of a water diverter above the longlight system when installed on a pitched roof.

Other longlight systems available for roof pitches between 10°-25° call 1-844-994-6867

# Architectural Skylights

## VELUX Modular Longlights



**Model - VMS**  
Ventilating Skylights

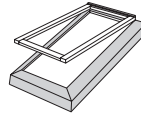
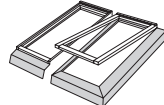
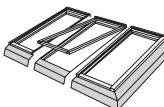
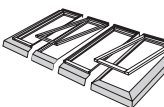

Ventilating system accessory package (control panel, switch and rain/wind sensor) included in all ventilating systems

Based on a modular concept, all components are prefabricated to ensure consistent quality, fast installation, and a perfect fit every time.


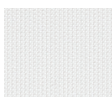

Type 10 Glass is standard on all configurations. Type 11 and Type 16 Glass options are also available.



### Ventilating 5° Longlights - roof pitch between 0°– 10° \*

Description	Code	Module Size W x H*	Opening W x H*	Price
 One electrically-operated vented longlight, complete with all flashing components. Includes electric control system and wind and rain sensor.**	HVC 100120 SL0047	39 5/16" x 47 3/16"	41 9/16" x 51"	•
	HVC 100160 SL0047	39 5/16" x 63"	41 9/16" x 67"	•
	HVC 100200 SL0047	39 5/16" x 78 10/16"	41 9/16" x 83"	•
	HVC 100240 SL0047	39 5/16" x 94 8/16"	41 9/16" x 98"	•
 Two longlights, one fixed, one electrically-operated vented, complete with flashing components. Includes electric control system and wind and rain sensor.**	HVC 100120 SL0048	39 5/16" x 47 3/16"	81" x 51"	•
	HVC 100160 SL0048	39 5/16" x 63"	81" x 67"	•
	HVC 100200 SL0048	39 5/16" x 78 10/16"	81" x 83"	•
 Three longlights, two fixed, one electrically-operated vented, complete with all flashing components. Includes electric control system and wind and rain sensor.**	HVC 100120 SL0049	39 5/16" x 47 3/16"	120 4/16" x 51"	•
	HVC 100160 SL0049	39 5/16" x 63"	120 4/16" x 67"	•
	HVC 100200 SL0049	39 5/16" x 78 10/16"	120 4/16" x 83"	•
 Four longlights, two fixed, two electrically-operated vented, complete with all flashing components. Includes electric control system and wind and rain sensor.**	HVC 100120 SL0050	39 5/16" x 47 3/16"	159 10/16" x 51"	•
	HVC 100160 SL0050	39 5/16" x 63"	159 10/16" x 67"	•
	HVC 100200 SL0050	39 5/16" x 78 10/16"	159 10/16" x 83"	•
 Ten longlights, seven fixed, three electrically-operated vented, complete with all flashing components. Includes electric control system and wind and rain sensor.**	HVC 100120 SL0051	39 5/16" x 47 3/16"	395 14/16" x 51"	•
	HVC 100160 SL0051	39 5/16" x 63"	395 14/16" x 67"	•
	HVC 100200 SL0051	39 5/16" x 78 10/16"	395 14/16" x 83"	•
	HVC 100240 SL0051	39 5/16" x 94 8/16"	395 14/16" x 98"	•

### Blinds

Description	Code	Color	Size W x H*	Price
 Electrically-Operated Roller Blind	RMM 100120 4083A	Grey	39 5/16" x 47 3/16"	•
	RMM 100160 4083A	Grey	39 5/16" x 63"	•
	RMM 100200 4083A	Grey	39 5/16" x 78 10/16"	•
	RMM 100240 4083A	Grey	39 5/16" x 94 1/2"	•
 Electrically-Operated Roller Blind	RMM 100120 4084A	White	39 5/16" x 47 3/16"	•
	RMM 100160 4084A	White	39 5/16" x 63"	•
	RMM 100200 4084A	White	39 5/16" x 78 10/16"	•
	RMM 100240 4084A	White	39 5/16" x 94 1/2"	•
 Electrically-Operated Roller Blind	RMM 100120 4085A	Black	39 5/16" x 47 3/16"	•
	RMM 100160 4085A	Black	39 5/16" x 63"	•
	RMM 100200 4085A	Black	39 5/16" x 78 10/16"	•
	RMM 100240 4085A	Black	39 5/16" x 94 1/2"	•

Delivery time approximately 8-10 weeks for product and blinds

\*Assumes 0° roof pitch. \*\*The installer is responsible for curb-flashing material and installation of the curb to the roof. Installer may want to consider the use of a water diverter above the longlight system when installed on a pitched roof.

Other longlight systems available for roof pitches between 10°-25° call 1-844-994-6867



# Roof Windows

## Top-Hinged GPU



MODEL - GPU



15° - 55°  
3:12 - 17:12

GPU roof pitch

Designed for in-reach applications, such as bonus rooms or attics.

Opens to a maximum of 45° to satisfy egress requirements for emergency escape.

(MK06, MK08, PK10, SK06, UK08 only)



See page 37 for special order blind options



### SIZE

Description	CK04	CK06	MK04	MK06	MK08	PK10	SK06	UK08
Outside Frame W" x H"	21 7/8 x 38 1/2	21 7/8 x 46 7/8	30 3/4 x 38 1/2	30 3/4 x 46 7/8	30 3/4 x 55	37 1/8 x 63	44 7/8 x 46 7/8	52 3/4 x 55 1/16
Rough Opening W" x H"	22 1/8 x 39	22 1/8 x 46 7/8	31 1/4 x 39	31 1/4 x 46 7/8	31 1/4 x 55 1/2	37 3/8 x 63 1/2	45 3/8 x 46 7/8	53 1/4 x 55 1/2

### BASE MODEL

Description	CK04	CK06	MK04	MK06	MK08	PK10	SK06	UK08
<b>Laminated Glass</b> Code <b>0060R</b>   Delivery <b>T</b>	•	•	•	•	•	•	•	•

### FLASHING

Description	CK04	CK06	MK04	MK06	MK08	PK10	SK06	UK08
<b>Step Flashing</b> Asphalt Shingles, Wood Shakes, or Slate Up to 1/2 inch maximum thickness Code <b>EDL 0000</b>   Delivery <b>T</b>	•	•	•	•	•	•	•	•
<b>High Profile Flashing</b> Tile - Over 3/4 inch thickness Code <b>EDW 0000</b>   Delivery <b>T</b>	•	•	•	•	•	•	•	•

### ACCESSORIES

Description	CK04	CK06	MK04	MK06	MK08	PK10	SK06	UK08
<b>Manual Blind</b> White, Room-Darkening, Double-Pleated Code <b>FHC 1045S</b>   Delivery <b>T</b>	•	•	•	•	•	•	•	•
<b>Manual Blind</b> White, Light-Filtering, Single-Pleated Code <b>FHL 1016</b>   Delivery <b>T</b>	•	•	•	•	•	•	•	•
<b>Manual Blind</b> Venetian Code <b>PAL 7001S</b>   Delivery <b>T</b>	•	•	•	•	•	•	•	•
<b>Insect Screen</b> Code <b>ZIL 8888</b>   Delivery <b>T</b>	•	•	•	•	•	•	•	•

All cladding components for roof windows are included in the flashing box. If VELUX flashing is not used, then ZWC cladding pieces must be ordered.

# Roof Windows

## Roof Access GXU



MODEL - GXU



15° - 55°  
3:12 - 17:12

GXU roof pitch

Easy access to the outdoors

The FK06 swings open to a 90° angle to satisfy egress requirements for emergency escape

(FK06 only)



See page 37 for special order blind options



### SIZE

Description	CK06	FK06
Outside Frame W" x H"	21 5/8 x 46 7/8	26 x 46 7/8
Rough Opening W" x H"	22 1/8 x 46 7/8	26 1/2 x 46 7/8

### BASE MODEL

Description	CK06	FK06
Laminated Glass Code 0060   Delivery T	•	•

### FLASHING

Description	CK06	FK06
<b>Step Flashing</b> Asphalt Shingles, Wood Shakes, or Slate Up to 1/2 inch maximum thickness Code EDL   Delivery T	•	•
<b>High Profile Flashing</b> Tile - Over 3/4 inch thickness Code EDW   Delivery T	•	•

### ACCESSORIES

Description	CK06	FK06
<b>Manual Blind</b> White, Room-Darkening, Double-Pleated Code FHC 1045S   Delivery T	•	•
<b>Manual Blind</b> White, Light-Filtering, Single-Pleated Code FHL 1016S   Delivery T	•	•
<b>Manual Blind</b> Venetian Code PAL 7001S   Delivery T	•	•
<b>Insect Screen</b> Code ZIL 8888   Delivery T	•	•

All cladding components for roof windows are included in the flashing box. If VELUX flashing is not used, then ZWC cladding pieces must be ordered.

# Roof Windows

## Balcony GDL CABRIO™



MODEL - GDL CABRIO™

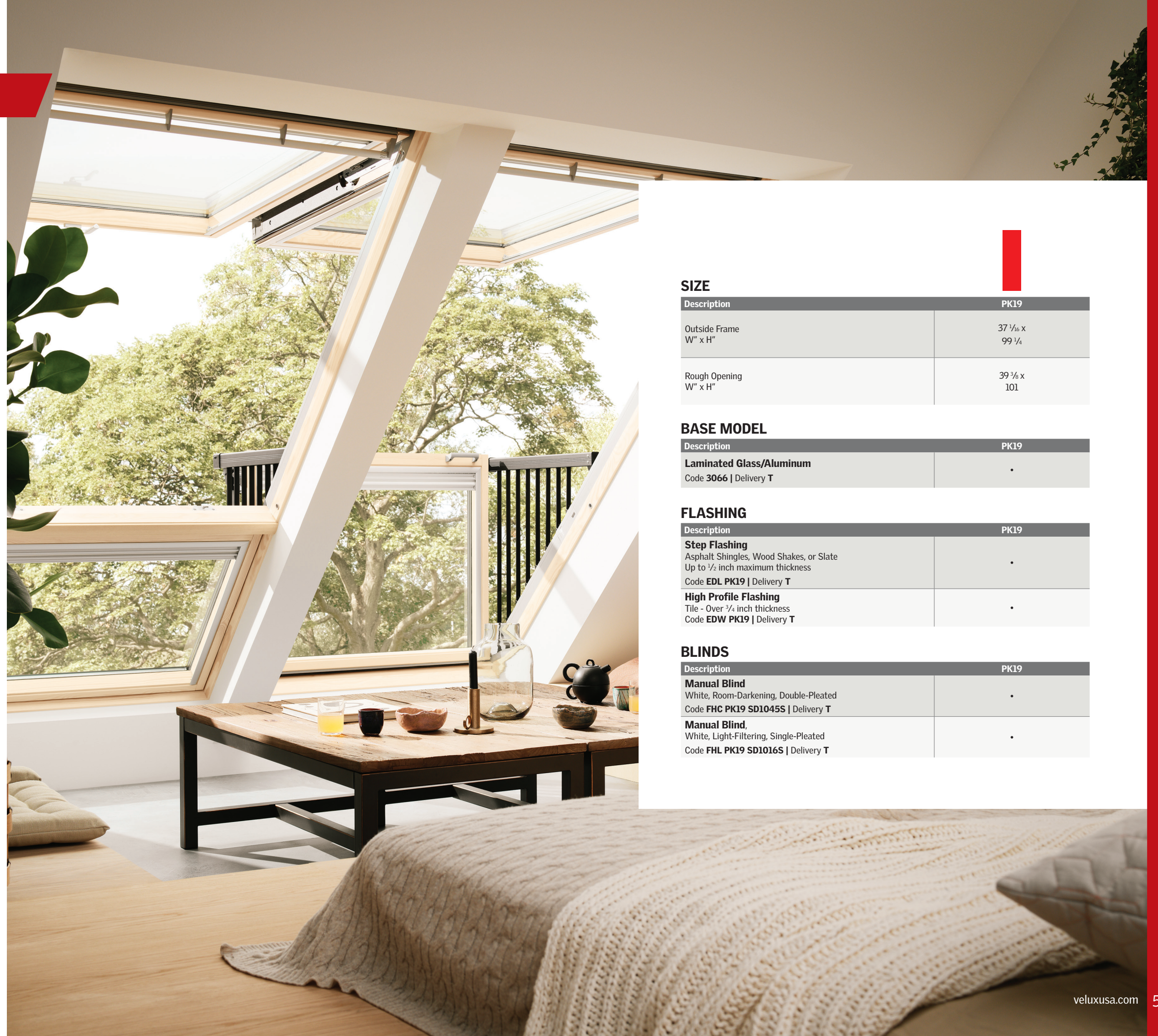


35° - 53°  
8.4:12 - 15:12

GDL CABRIO™ roof pitch

Dual-sash operation: top opens for ventilation and bottom opens outward to create a roof balcony

When the GDL CABRIO™ roof window is closed, a ventilation flap can be opened to provide a breath of fresh air, even if it is raining outside



### SIZE

Description	PK19
Outside Frame W" x H"	37 1/16 x 99 1/4
Rough Opening W" x H"	39 3/8 x 101

### BASE MODEL

Description	PK19
<b>Laminated Glass/Aluminum</b> Code 3066   Delivery T	•

### FLASHING

Description	PK19
<b>Step Flashing</b> Asphalt Shingles, Wood Shakes, or Slate Up to 1/2 inch maximum thickness Code EDL PK19   Delivery T	•
<b>High Profile Flashing</b> Tile - Over 3/4 inch thickness Code EDW PK19   Delivery T	•

### BLINDS

Description	PK19
<b>Manual Blind</b> White, Room-Darkening, Double-Pleated Code FHC PK19 SD1045S   Delivery T	•
<b>Manual Blind,</b> White, Light-Filtering, Single-Pleated Code FHL PK19 SD1016S   Delivery T	•

# Roof Windows

## Center-Pivot GGU



MODEL - GGU



15° - 90°  
3:12 - 90°

GGU roof pitch

Easy to open and quick to close  
with the top control bar



See page 37 for special order  
blind options



### SIZE

Description	CK02	CK04	CK06	FK04	FK06	FK08	MK04	MK06	MK08	MK10	PK06	PK08	PK10	SK06	SK08	UK04	UK08
Outside Frame W" x H"	21 3/8 x 30 3/8	21 3/8 x 38 1/2	21 3/8 x 46 3/8	26 x 38 1/2	26 x 46 3/8	26 x 55	30 3/4 x 38 1/2	30 3/4 x 46 3/8	30 3/4 x 55	30 3/4 x 63	37 1/8 x 46 3/8	37 1/8 x 55	37 1/8 x 63	44 7/8 x 46 3/8	44 7/8 x 55	52 3/4 x 38 1/2	52 3/4 x 55 1/2
Rough Opening W" x H"	22 1/8 x 31 1/8	22 1/8 x 39	22 1/8 x 46 7/8	26 1/2 x 39	26 1/2 x 46 7/8	26 1/2 x 55 1/2	31 1/4 x 39	31 1/4 x 46 7/8	31 1/4 x 55 1/2	31 1/4 x 63 1/2	37 5/8 x 46 7/8	37 5/8 x 55 1/2	37 5/8 x 63 1/2	45 3/8 x 46 7/8	45 3/8 x 55 1/2	53 1/4 x 39	53 1/4 x 55 1/2

### BASE MODEL

Description	CK02	CK04	CK06	FK04	FK06	FK08	MK04	MK06	MK08	MK10	PK06	PK08	PK10	SK06	SK08	UK04	UK08
<b>Laminated Glass</b> Code <b>0060R</b>   Delivery <b>N</b>	•	•	•	•	•	•	•	•	•	•	•	•	•	•	•	•	•

### FLASHING

Description	CK02	CK04	CK06	FK04	FK06	FK08	MK04	MK06	MK08	MK10	PK06	PK08	PK10	SK06	SK08	UK04	UK08
<b>Step Flashing</b> Code <b>EDL</b>   Delivery <b>T</b>	•	•	•	•	•	•	•	•	•	•	•	•	•	•	•	•	•

### ACCESSORIES

Description	CK02	CK04	CK06	FK04	FK06	FK08	MK04	MK06	MK08	MK10	PK06	PK08	PK10	SK06	SK08	UK04	UK08
<b>Manual Blind</b> White, Room Darkening, Double-Pleated Code <b>FHC 1045S</b>   Delivery <b>T</b>	•N	•	•	•N	•	•	•N	•	•	•N	•N	•N	•	•	•N	•	•
<b>Manual Blind</b> White, Light-Filtering, Single-Pleated Code <b>FHL 1016S</b>   Delivery <b>T</b>	•N	•	•	•N	•	•	•N	•	•	•N	•N	•N	•	•	•N	•	•
<b>Manual Blind</b> Venetian Code <b>PAL 7001S</b>   Delivery <b>T</b>	•	•	•	•	•	•	•	•	•	•	•	•	•	•	•	•	•
<b>Insect Screen</b> Code <b>ZIL 8888</b>   Delivery <b>T</b>	•N	•	•	•N	•	•	•N	•	•	•N	•N	•N	•	•	•N	•	•

All cladding components for roof windows are included in the flashing box. If VELUX flashing is not used, then ZWC cladding pieces must be ordered.

# Sun Tunnel® Skylights

## Rigid/Flex



**MODEL - TGR**

One-piece Low-profile metal flashing - Rigid



**MODEL - TGF**

One-piece Low-profile metal flashing - Flexible



**MODEL - TMR**

Pitched one-piece metal flashing - Rigid



**MODEL - TMF**

Pitched one-piece metal flashing - Flexible



**MODEL - TLR**

Low-profile flat glass - Rigid



**MODEL - TCR**

Curb metal flashing - Rigid



### 10" Sun Tunnel®

Description	TGR 010	TSR 010	TMR 010
Tunnel length with kit Rigid kits include 2 elbows & 24" extension	48"	48"	48"
Tunnel type	Rigid	Rigid	Rigid
Maximum recommended installation length	20'	20'	20'
Dome/Flashing	TGR 010	TSR 010	TMR 010
<b>Acrylic Dome</b> Shingle/shake roof Code <b>0000</b>   Delivery <b>S</b>	•	N/A	•
<b>Impact Dome</b> Shingle/shake roof Code <b>1000</b>   Delivery <b>T</b>	•	N/A	•
<b>Acrylic Dome</b> Plastic and metal flashing - shingle/shake roof Code <b>0000</b>   Delivery <b>S</b>	N/A	•	N/A



### 14" Sun Tunnel®

Description	TGR 014	TMR 014	TLR 014	TCR 014	TMF 014	TGF 014
Tunnel length with kit Rigid kits include 2 elbows & 24" extension	48"	48"	48"	48"	8'	8'
Tunnel type	Rigid	Rigid	Rigid	Rigid	Flexible	Flexible
Maximum recommended installation length	30'	30'	30'	30'	8'	8'
Dome/Flashing	TGR 014	TMR 014	TLR 014	TCR 014	TMF 014	TGF 014
<b>Flat Glass</b> Shingle/shake roof Code <b>2000</b>   Delivery <b>S</b>	N/A	N/A	•	N/A	N/A	N/A
<b>Acrylic Dome</b> Shingle/shake roof Code <b>0000</b>   Delivery <b>S</b>	•	•	N/A	•	•	•
<b>Impact Dome</b> Shingle/shake roof Code <b>1000</b>   Delivery <b>T</b>	•	•	N/A	•	•	•



### 22" Sun Tunnel®\*

Description	TGF 022	TGR 022
Tunnel length with kit Rigid kits include 2 elbows & 24" extension Subtract approximately 6" for flashing	8'	48"
Tunnel type	Flexible	Rigid
Maximum recommended installation length	12'	40'
Dome/Flashing	TGF 022	TGR 022
<b>Acrylic Dome</b> Shingle Code <b>0000</b>   Delivery <b>S</b>	•	N/A
<b>Impact Dome</b> Shingle Code <b>1000</b>   Delivery <b>T</b>	•	N/A
<b>Acrylic Dome</b> Shingle - ships in multiple boxes Code <b>S0000</b>   Delivery <b>F</b>	N/A	•

\*Standard ceiling ring on all 22" models



### Go Solar, Save Big\*

Purchase a Solar Night Light with your Sun Tunnel® to become eligible for a 30% federal tax credit on your entire purchase, including installation!



Order code example: **TMR** - **010** - **0000** - **SL**  
product size code light

\*For more information visit: [veluxusa.com/go-solar](http://veluxusa.com/go-solar)  
Only available for VELUX Rigid, Residential Sun Tunnel® Skylights

# Sun Tunnel® Skylights

## Accessories

### Lighting

#### Solar Night Light

Provides low level light available for rigid tunnel only

Eligible  
30%  
Federal tax  
credit\*

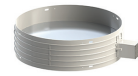


Model	Price	Delivery
ZTZ 213	•	S

\*For more information visit: [veluxusa.com/taxcredit](http://veluxusa.com/taxcredit)

#### Daylight Controller

Motorized variable positioning daylight control device



Model	10"	14"	Delivery
ZTP	N/A	•	F

#### Power Supply

Power supply for control devices



Model	Price	Delivery
ZZZ 233	•	F

#### Universal Electric Light Kit

Designed to let your Sun Tunnel® be a source of light at night and also during the day



Model	10"	14"	22"	Delivery
ZTL 114	•	•	N/A	S
ZTL 122	N/A	N/A	•	S

#### Diffusion Enhancer - 6" band

Highly reflective obscure 6" band designed to diffuse direct sunlight



Model	10"	14"	Delivery
ZTZ 209	•	•	S

### Tunnel

#### Rotation Coupler

Enables quick tunnel connections when getting around obstacles in the attic is required



Model	10"	14"	Delivery
ZTZ 211	•	•	S

#### Elbows

Can be used at bottom, middle, or top of your installation - can form a 90 degree bend using multiple elbows with rotating couplers



Model	10"	14"	22"	Delivery
ZTE 0000	•	•	•	S

#### Rigid Tunnel

24" reflective tunnel sections available in bulk quantities



Model	10"	14"	22"	Delivery
ZTR 2' - 1 unit	•	•	•	S
ZTR 4' - 2 units	•	•	•	S
ZTR 6' - 3 units	•	•	•	S
ZTR 12' - 6 units	•	•	•	S
ZTR 24' - 12 units	•	•	•	S

#### Suspension Wire Kit

12-gauge wire and fastener set to secure longer tunnel sections



Model	Price	Delivery
ZTZ 203	•	F

### Performance Enhancing

#### Energy Kit

Designed to increase energy efficiency; includes a thermal plate and a diffusing disc



Model	10"	14"	22"	Delivery
ZTC 0051US	•	•	N/A	S
ZTC 0041US	N/A	N/A	•	S

#### Exterior Fire Band

Designed to meet fire prevention requirements of building codes - not available for TSR 10"



Model	10"	14"	22"	Delivery
ZZZ 192	•	•	•	F

#### Vapor Barrier

Designed for protecting flashing components and ceiling opening from condensation



Model	10"	14"	22"	Delivery
ZTY	•	•	•	T

#### Decorative Diffusers

Simple way to enhance your fifth wall and ensure that your diffuser matches the décor and feel of the room



Model	Description	10"	14"	Delivery
Micro Fresnel ZTB 4004US		•	•	S
Triple Wave ZTB 4005US		•	•	S
Brushed Metal ZTB 4006US		•	•	S
Prismatic ZTB 4007US		•	•	S
Bubbles ZTB 4008US		•	•	S
Natural light ZTB 4009US		•	•	S

### Flashing

#### Curb-Mounted Flashing - Tile

Install on tile roofing material over 3/4" thickness for roof pitch 14-60° Only for TCR



Model	10"	14"	Delivery
ECW	N/A	•	S

#### Sun Tunnel® Flashing - Tile

Water-tight flashing without the use of sealants Only for TMR and TMF



Model	10"	14"	Delivery
ZTM 0000 50	•	•	F

VELUX America LLC  
450 Old Brickyard Road  
PO Box 5001  
Greenwood, SC 29648-5001  
Tel 1-800-888-3589  
Fax 1-864-943-2631  
veluxusa.com  
whyskylights.com

*Bringing light to life*

**Non-dealer disclaimer**

List prices shown do not include shipping and handling cost, delivery cost by your local VELUX Dealer or applicable sales tax. Final unit pricing can be 10–15%+ higher depending on your location, services provided and final delivery of the skylight to the job site. Many of the skylights do not include flashings or blinds. These can be purchased separately.

All VELUX skylights, roof windows, Sun Tunnel Skylights, flashing kits and blinds must be purchased through a qualified VELUX dealer. Please see the “Where To Buy” section of veluxusa.com website for a list of VELUX dealers near you.

**NOTICE: ALL GLASS MAY BE SUBJECT TO UNEXPECTED AND SPONTANEOUS BREAKAGE** in rare circumstances due to imperfections in the glass that are undetectable during the manufacturing and inspection process by the manufacturer of the glass and VELUX.

VELUX offers the choice of laminated or tempered glass skylights. Impact glass and comfortplus glass are all types of laminated glass. Comfort glass is a type of tempered glass. Laminated glass is a combination of two or more glass sheets with one or more interlayers of plastic (PVB) or resin. In case of breakage, the interlayer is designed to hold the fragments together. Tempered glass does not contain an interlayer to hold the fragments together. Instead, tempered glass is designed to break into small, pebble-like pieces. When tempered glass breaks, pieces of glass come loose and may strike an individual.

**CONSULT LOCAL REGULATIONS AND/OR BUILDING MATERIAL CONSULTANTS TO DETERMINE WHICH TYPE OF GLASS IS RIGHT FOR YOU OR IF LAMINATED GLASS IS REQUIRED IN YOUR APPLICATION.**

**VELUX®**

The VELUX Group creates better living environments with daylight and fresh air through the roof. The VELUX product program contains a wide range of roof windows and skylights, along with solutions for flat roofs. The Group also supplies many types of decoration and sun screening, roller shutters, installation products, products for remote control for installation in roofs. The VELUX Group, which has manufacturing companies in 11 countries and sales companies in just under 40 countries, represents one of the strongest brands in the global building materials sector and its products are sold in most parts of the world. The VELUX Group has about 10,000 employees and is owned by VKR Holding A/S, a limited company wholly owned by foundations and family. For more details, visit velux.com.

V 4316-0719 • ©2019 VELUX Group • VELUX®, VELUX logo are registered trademarks • VELUX Sun Tunnel is a trademark of VELUX Group  
HGTV, HGTV Smart Home, HGTV Smart Home Giveaway and their associated logos are trademarks of Scripps Networks, LLC. Used with permission; all rights reserved.