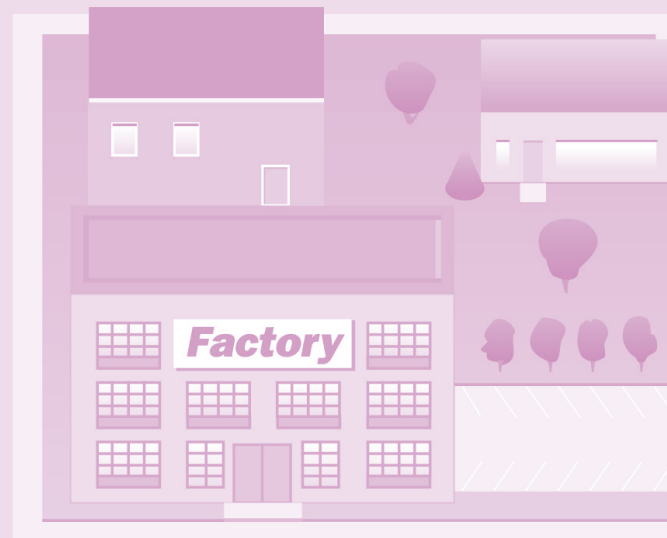
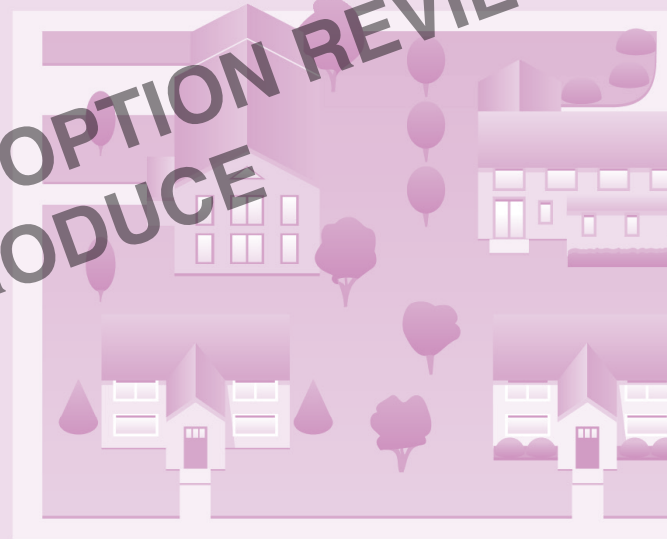
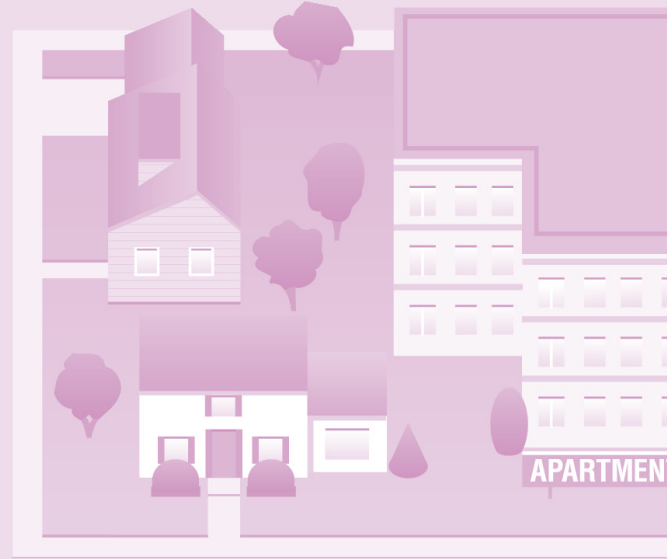


The
NYSTROM

Block Buddy ATLAS





The

NYSTROM

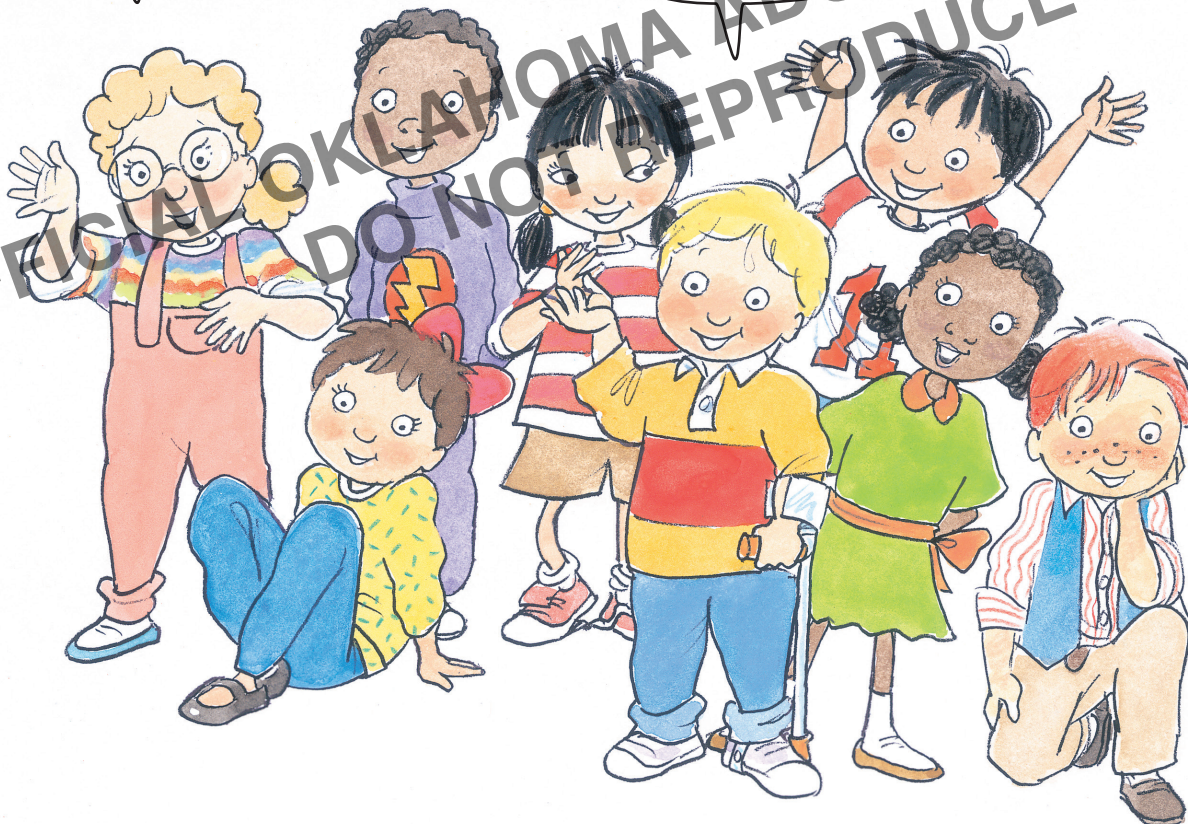
Block Buddy

ATLAS

Hi! We're the
Block Buddies.

Come along
with us...

... as we explore
neighborhoods
and maps.





Contents

A Picture Atlas of Neighborhoods

4–15

Where do people live?	4–5
What do neighborhoods look like?	6–7
What are our needs and wants?	8–9
Where do people work?	10–11
What rules do people obey?	12–13
How do neighborhoods change?	14–15

What Can You Learn About Maps and Globes? 16–27

What view does a map show?	16–17
How do maps show real places?	18–19
What is a globe?	20–21
How can you see the whole world at once?	22–23
Where is your continent?	24–25
How do maps show your country?	26–27

2015 Update of Photographs and Images
2014 Update of Names and Boundaries

© 2005, 1998 Nystrom Education

Nystrom Education
10200 Jefferson Boulevard, P.O. Box 802
Culver City, CA 90232-0802
United States of America

(310) 839-2436
(800) 421-4246

www.nystromeducation.com
access@nystromeducation.com

All rights reserved. No part of this guide, except copymasters duplicated for classroom use only, may be reproduced or transmitted in any form or by any means, electronic or mechanical, including photocopying, recording, or by any information storage and retrieval system, without permission in writing from the publisher.

Printed in U.S.A.

ISBN: 978-0-7825-1022-5
Product Code: NYS0010 v2.5

This list tells
what lies ahead!



Where Do You Live?

28–33

- | | |
|-------------------------------------|-------|
| Where is your state? | 28–29 |
| What are symbols of our country? | 30–31 |
| What seasons does our capital have? | 32–33 |

Looking At the Continents

34–45

- | | |
|---|-------|
| How are other children in North America like you? | 34–35 |
| How are children in South America like you? | 36–37 |
| How are children in Africa like you? | 38–39 |
| How are children in Europe like you? | 40–41 |
| How are children in Asia like you? | 42–43 |
| How are these children like you? | 44–45 |

Glossary

46–47

Index

48

Abbreviations

inside back cover



Where do people live?



A Some people live in row houses.



B Others live in mobile homes.



C Some people live in big houses.

Some people in this neighborhood live in houses. Others live in apartments.



D Others live in apartment buildings.

What does YOUR home look like?



E Some people live in farm houses.



F Others live in ranch houses.



G Many people live in small houses.



H Others live in high-rise condos.

What do neighborhoods

 This neighborhood has streets and buildings. So does yours.



A Some neighborhoods have streets that curve.



B Others have straight streets.

How are these neighborhoods alike?



look like?

Which picture shows farms?

7



C Many neighborhoods have tall buildings.



D Some have houses close together.

How are these neighborhoods different?



E Others have houses far apart.



Are any of these like YOUR neighborhood?

What are our needs and



A We need ways to communicate with others.



Find places for meeting needs and wants.



B We need food for our health.

This neighborhood has things people need. It also has things they want.



C We need clothes to keep us warm.

wants?

9



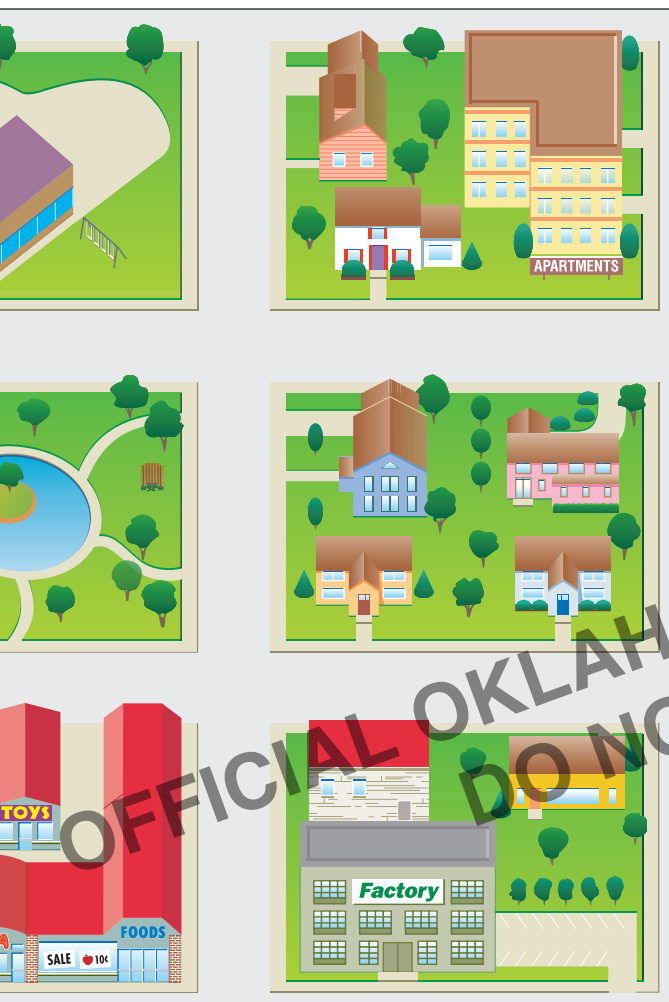
Which things
are both needs
AND wants?



D We need transportation for
going places.



What are
YOUR wants?



E We need a place to live.



F We want toys for
having fun.

Where do people work?

Many places in this neighborhood are places to work.

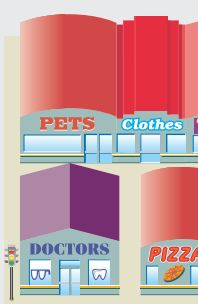
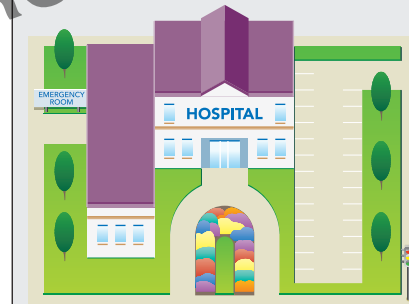
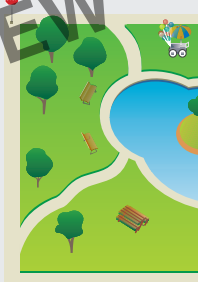
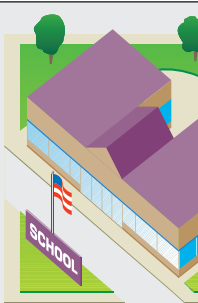


A Bakers sell food at the bakery.

Find the places where people work.



B Clerks put food on shelves at the grocery store.



C Doctors work at the hospital and in offices.



D Firefighters work at the firehouse and in the neighborhood.



E Cooks prepare food in restaurants.



F Some people work from home.

Where do people work in YOUR neighborhood?



What rules do people

We all follow rules in the neighborhood. Rules help keep us safe.



A Pet owners use leashes for walking their dogs.



B Students raise their hands to speak in class.

What rules do you obey at school?



C Bike riders wear helmets.



D A girl recycles plastic at home.



What rules do you obey at home?



E Young girls wear seatbelts.



F People cross the street at crosswalks.

How do neighborhoods



A Long ago, only a few people lived here. Most of them lived on farms.



Lots of things changed here!

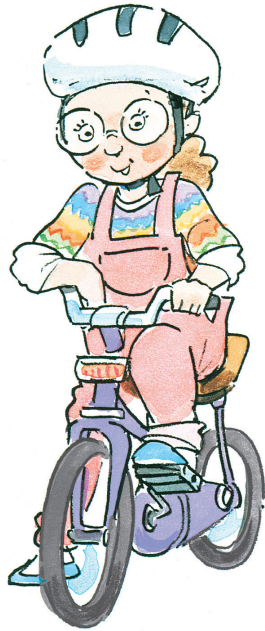


B More and more people came. They built new places to live, work, and learn.

change?

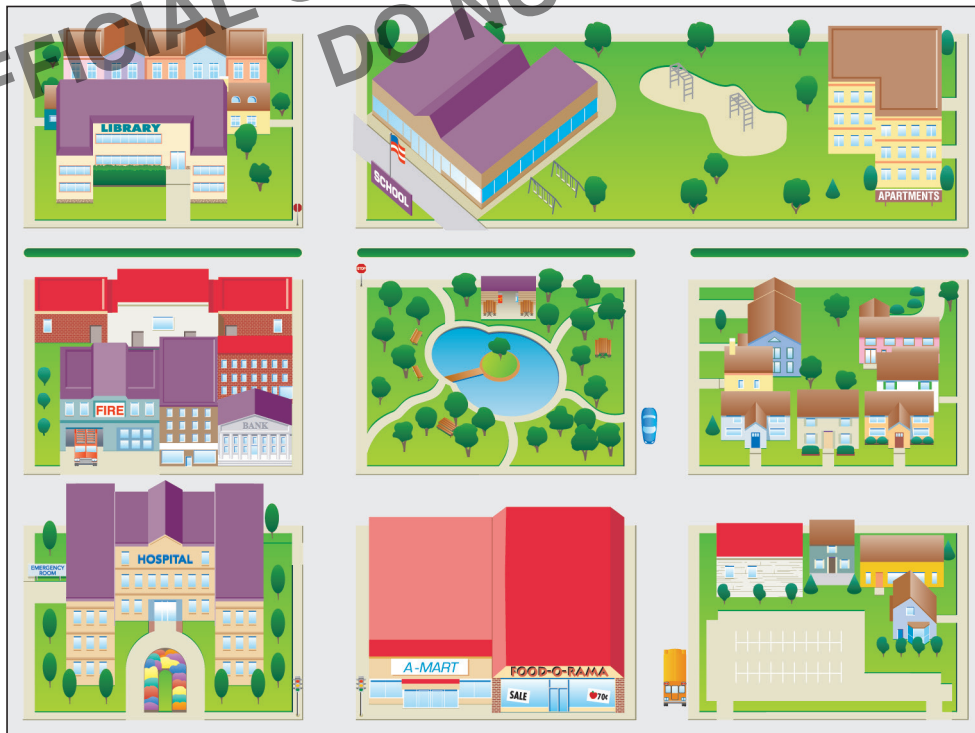
15

Can you tell what's new?



C Over the years the neighborhood kept changing. Today it looks like this.

What's old and new in YOUR neighborhood?



D In the future, the neighborhood might look like this.



What view does a



We found this building in a park.

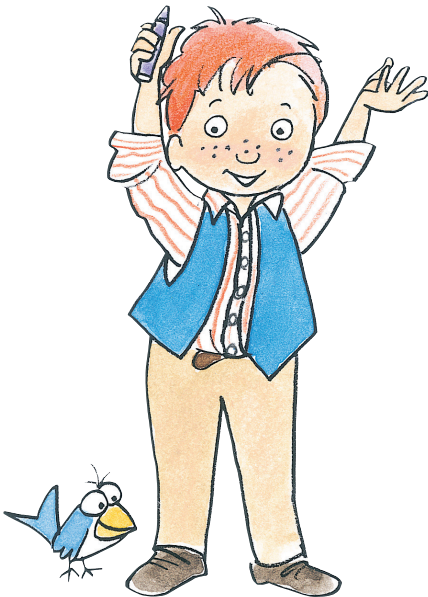


A We see a **view from the ground** when we're walking.

The same park is shown in all the pictures.



B A **bird's-eye view** looks down at an angle.



map show?

17

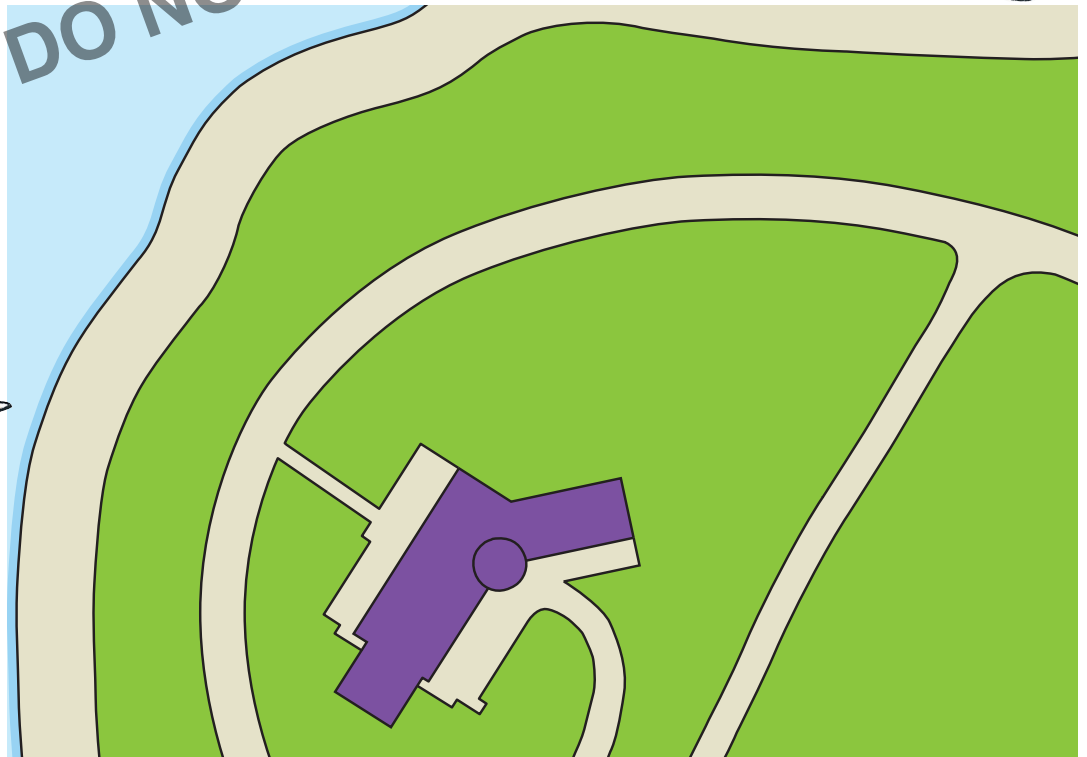


How is the map LIKE the photo?



C A view from directly above looks straight down.

How is the map DIFFERENT from the photo?

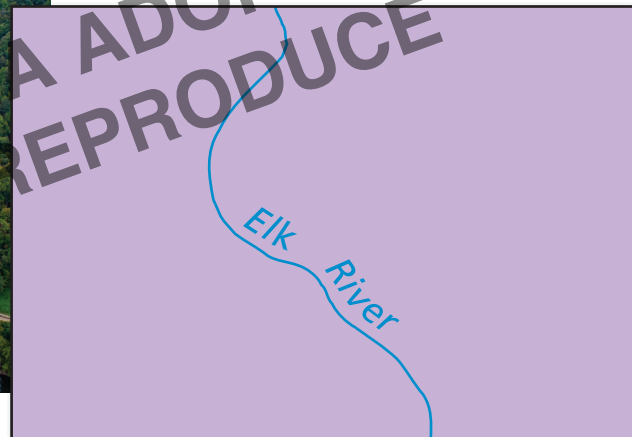


D A map is a special drawing of a view from directly above.

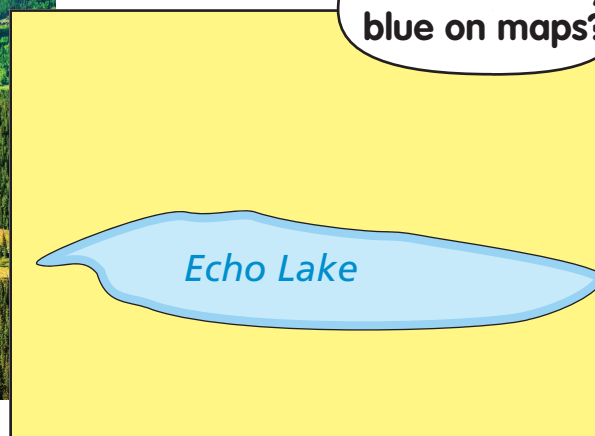
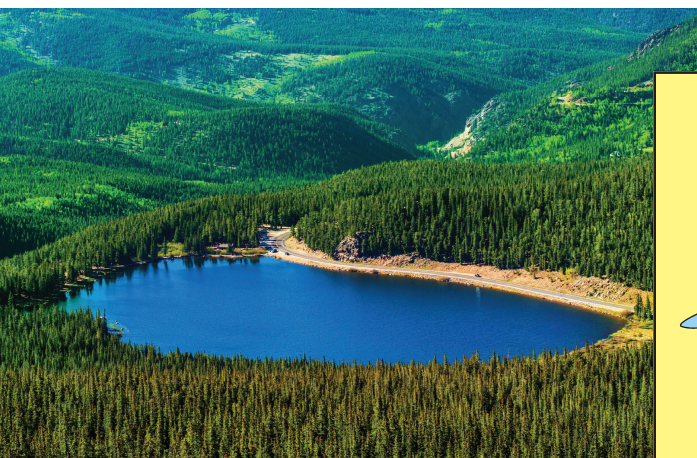
How do maps show



- A** A **coastline** is shown by a black line between land and water.



- B** A **river** is shown by a wavy blue line.



- C** A **lake** is shown by a blue area with land all around it.

What is usually blue on maps?



real places?

19

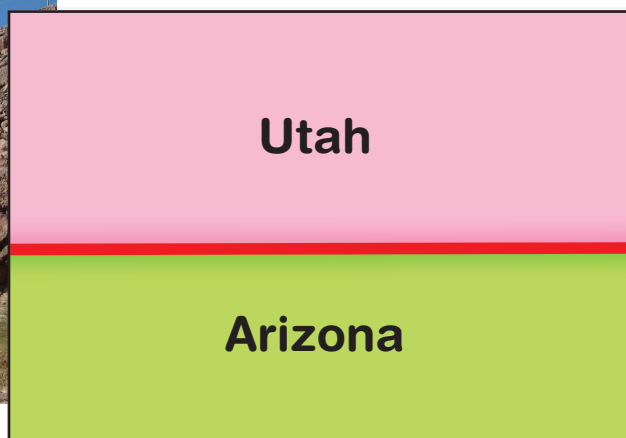
Find these
six terms in the
glossary.



D **Mountains** are shown by
shadows.



E A **country capital** is shown by a
red star in a circle.



F A **boundary** is shown by a
red line.

What is a globe?

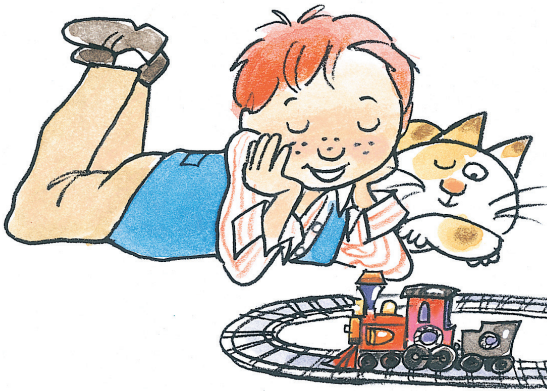


How is this model like the real thing?

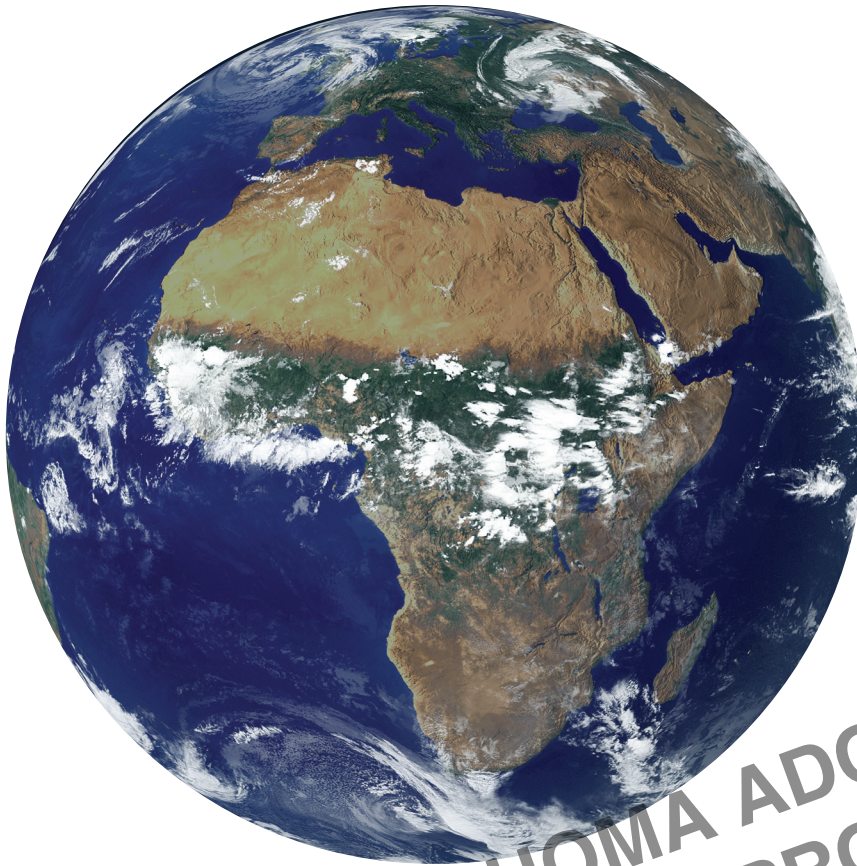


A A globe is a model of the earth. This is a model of a neighborhood.

Some models look very real.



B This classroom globe is a model of Earth.



Is the earth
round like a
penny?



C The earth looks like
this from space.



Or is it round
like a ball?



D Find ways this globe
is like the earth.

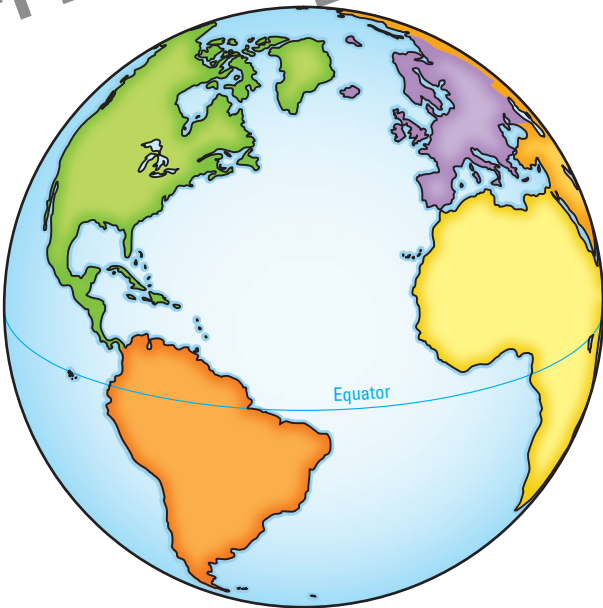
How can you see the



A globe can't
show the whole
world at once.



A A globe shows one part
of the world at a time.



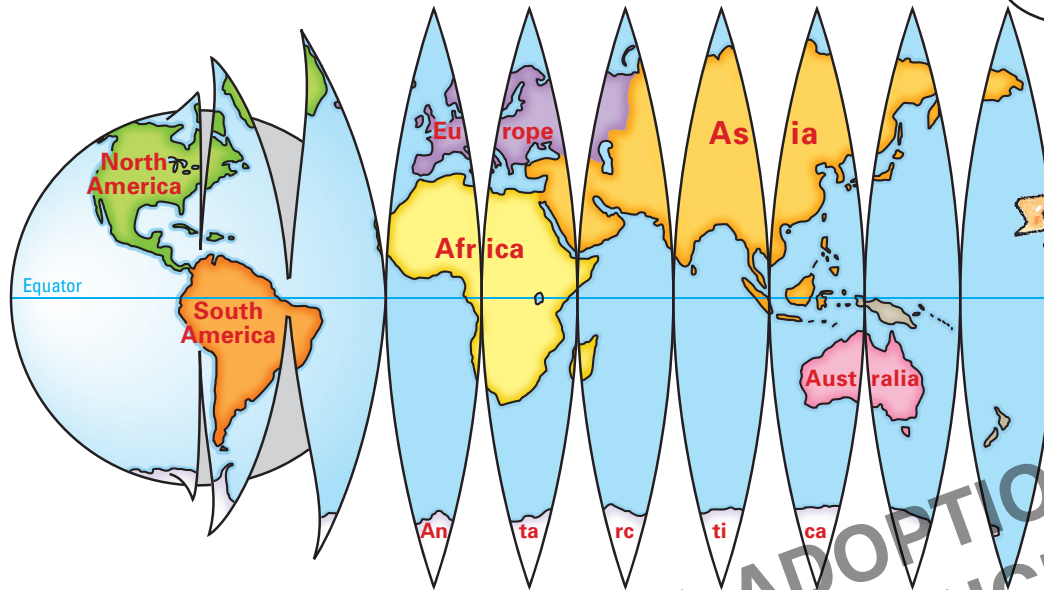
B You see something new
each time you turn a globe.



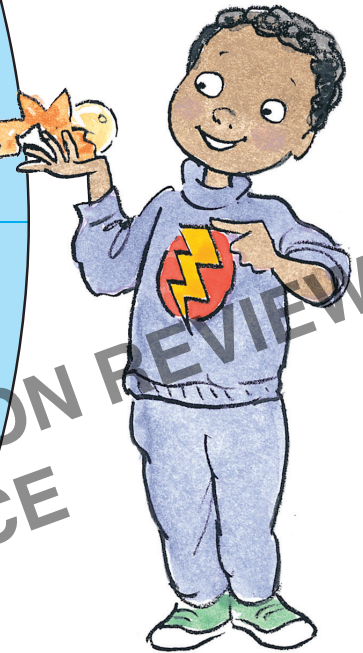
C Now you see another part
of the world.

whole world at once?

23

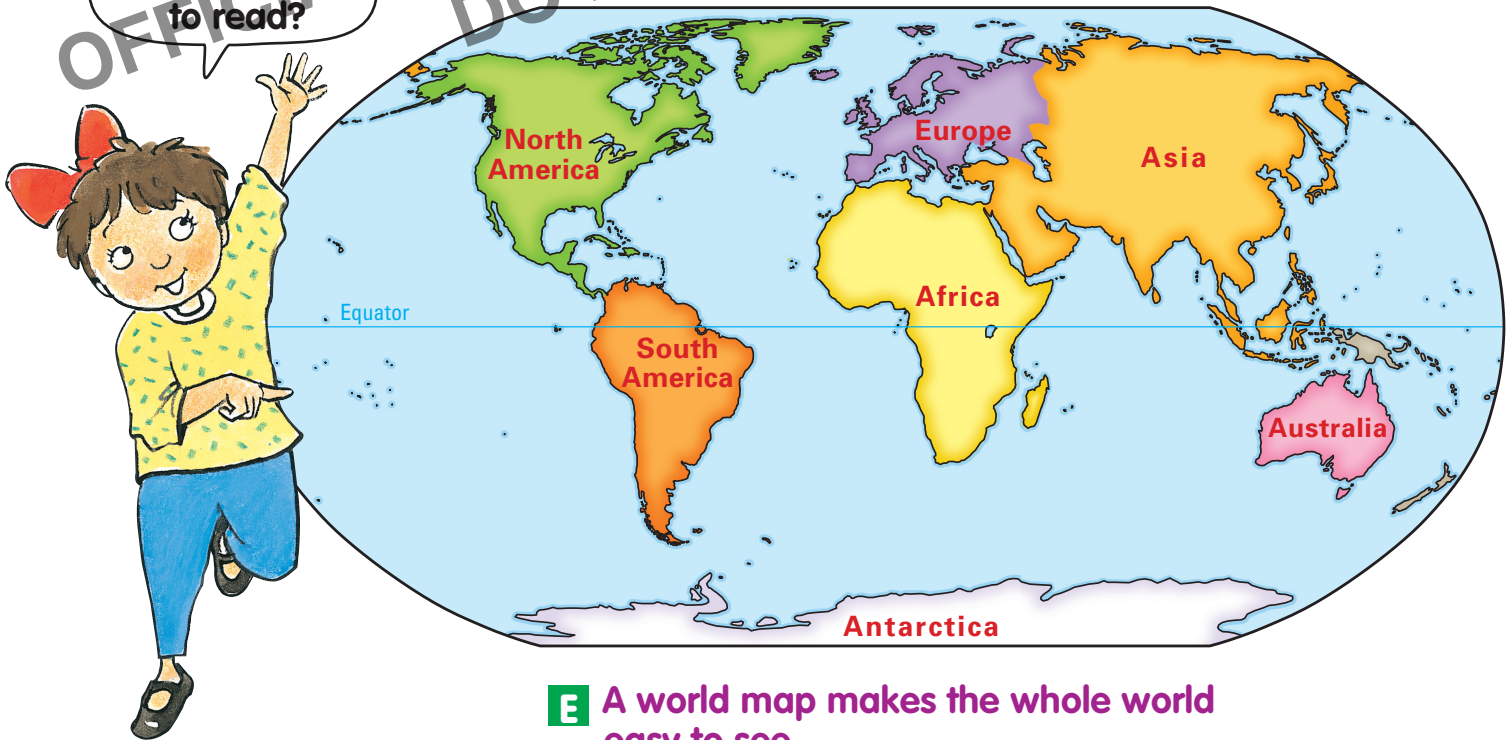


When you peel something round, its skin tears.



D Only a peeled globe can show the whole world at once.

Which is easier to read?



E A world map makes the whole world easy to see.

What color is
YOUR continent?



Where is your



World

- North America** Continent
Pacific Ocean Ocean
 — Country boundary
 Mountains

Scale in miles at the Equator
 0 1000 2000
 1 inch stands for 1580 miles

continent?

25

Find the
United States
on this map.



The maps on
page 27 will
help you.

How do maps show your

Compare the
photo colors with
the map colors.



A Your country is outlined on
this photo from outer space.

country?

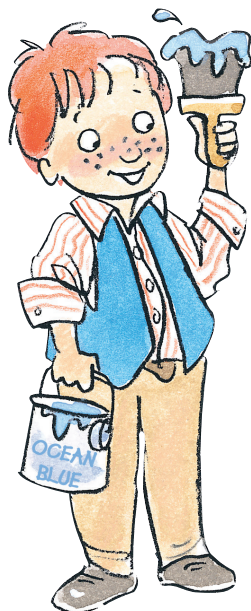
27

Name your country and its continent.



B Continents are different colors on this map. Red lines show country boundaries.

We made the ocean light blue on both maps.



C Color makes your country stand out on this map. Red lines show state boundaries.

Where is your state?



Colors on this map show the states.

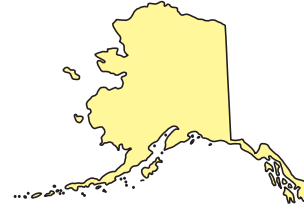
What color is yours?



What are symbols of



A Mount Rushmore honors four past U.S. presidents.



C The Statue of Liberty is a symbol of freedom.



B This flag stands for the United States.



Which of these symbols is in YOUR community?

our country?

31

You can find symbols of our country throughout the United States.



Find the photo for each letter on the map.

Washington, D.C.



D The Capitol is where people meet to make our laws.



E The Liberty Bell celebrates independence.



F This memorial honors President Abraham Lincoln.

What seasons does our



Washington, D.C. is the capital of the United States. Follow its cycle of seasons.

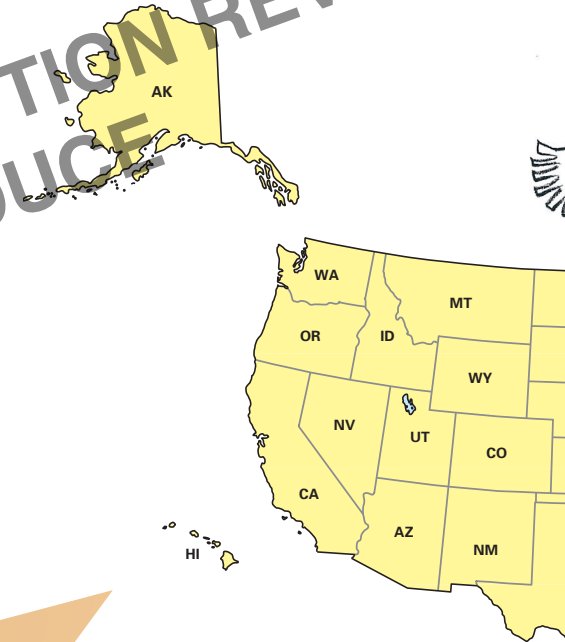
Winter This is the coldest season. Water freezes and it may snow.



What are the seasons like where you live?



Fall Weather gets cooler. Leaves change color.



capital have?

33



Each season flows into the next.



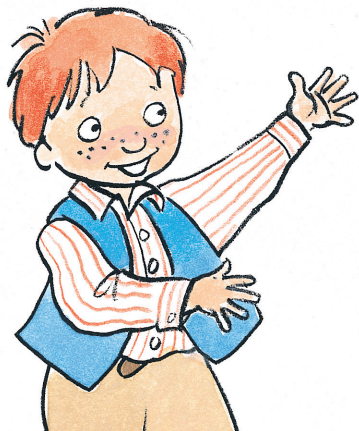
Spring Weather gets warmer. Flowers and trees bloom.

Washington, D.C.



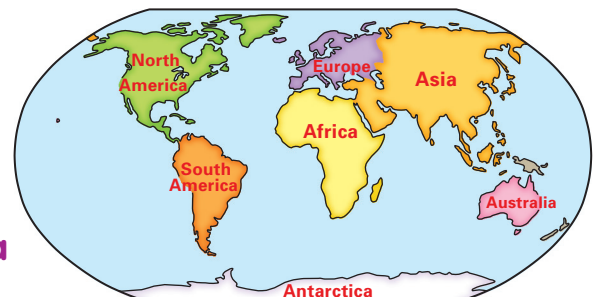
Summer This is the hottest season. The sun is very bright.

How are other children in



What color is
North America
on both maps?

Find North America
in the world.



North America like you?

35



A **Guatemala** A boy helps his family sell fruits and vegetables.



B **Canada** A child plays in the snow.

Use the map to find the places in the photos.



C **United States** A family enjoys a picnic.



D **Mexico** Children play outside during recess.



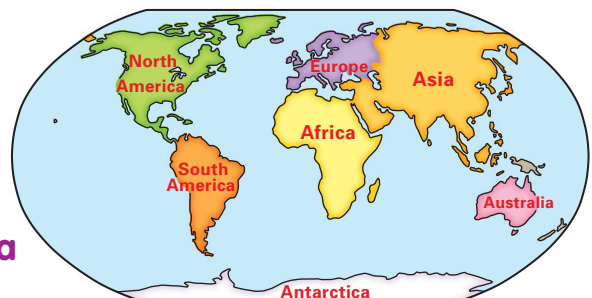
E **Trinidad and Tobago** Children wear costumes for a holiday.

How are children in South



Name the continent
that touches
South America.

Find South America
in the world.



America like you?

37



A Venezuela A boy reads with his grandma.



E Brazil These boys play at home.

Do you ever
make things with
your father?



C Peru A father and his children learn and work together.

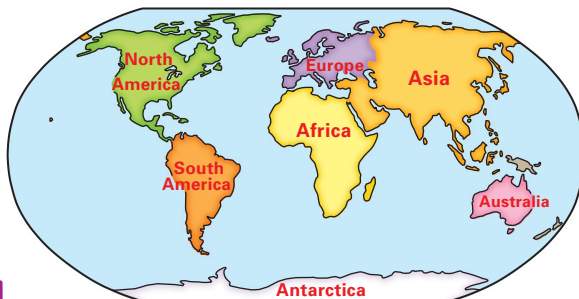


D Bolivia A girl plays the violin.

E Argentina Children dance at a festival.



How are children in Africa



Find Africa
in the world.



Is Africa a
country, or is it
a continent?

like you?

39



A **Guinea** A girl at school.



B **Egypt** Schoolboys are smiling for the camera.



C **Kenya** A boy is getting ready to plant trees.



D **Togo** A girl carries gifts.



E **South Africa** Students study in class.



How are children in

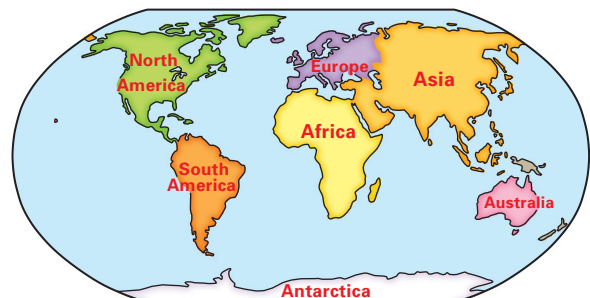


A **Germany** Students wait in line during a field trip.



B **Greece** Children ride bicycles in their village.

Which continents are neighbors of Europe?



Find Europe in the world.

Europe like you?

41



C Spain Children sit at a school assembly.

What color are country names on this map?



D Russia Two girls pick flowers from a field.



E Albania A boy and girl play outside.

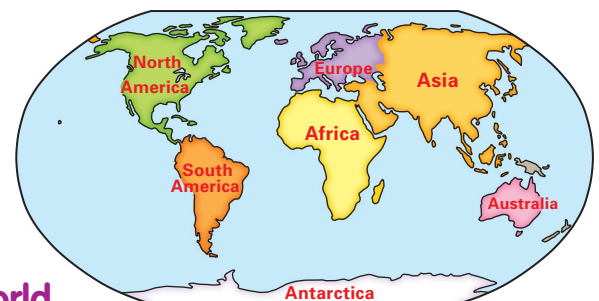
How are children in Asia



A Israel A family celebrates Hanukkah.



B Japan A family eats dinner together.



Find Asia in the world.

like you?

43



Asia

Africa	Continent
Japan	Country
Pacific Ocean	Ocean, sea, bay
	Country boundary
	Mountains

Scale in miles
0 250 500 750 1000
1 inch stands for 950 miles



C **Indonesia** Children walk home from school.



D **Mongolia** A boy rides a horse at a festival.

Can you name some of Asia's island countries?

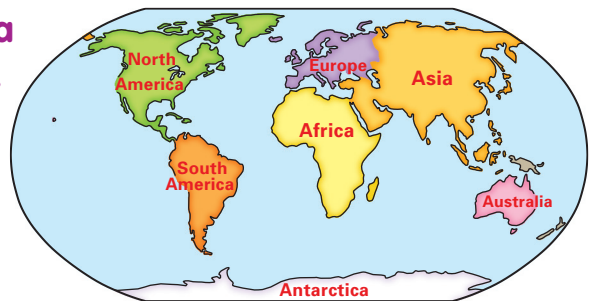


E **India** Children play outside their homes.

How are these children



 Find Australia in the world.



A A girl performs in a school play.

B Students listen to a story.



like you?

45

Find Antarctica in the world.



Children do not live here, but penguins do!



A penguin family stays warm.



Antarctica

South America

Continent

Southern Ocean

Ocean



Mountains

Scale in miles

0 250 500 750 1000

1 inch stands for 750 miles

Glossary

A glossary
tells what
words mean.



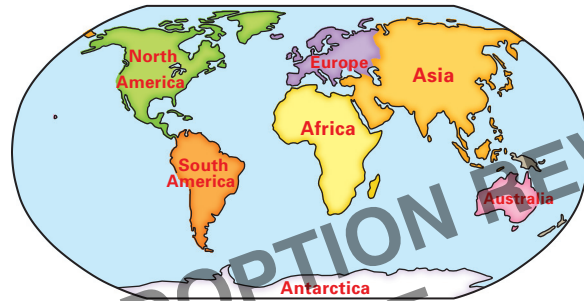
atlas A book of maps.

boundary Where two states or countries meet.

capital City where the government of a country or state is located.

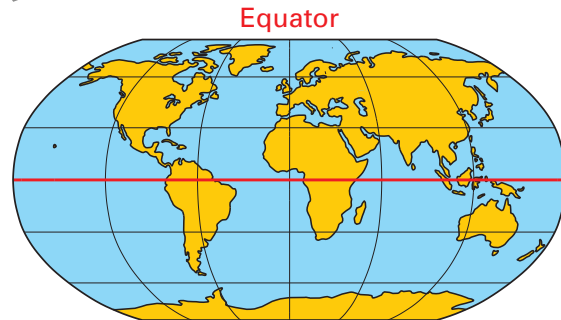
coastline The edge of a continent along a sea or an ocean.

continent One of the seven largest land areas on the earth.



country A land with one government. Some countries have many states.

Equator Imaginary line around the middle of the earth.



globe A model of the earth that is round like a ball.

island A body of land surrounded by water. An island is smaller than a continent.

lake A body of water, usually fresh. The water in a lake stays in one place.

map A special drawing of all or part of the earth as seen from directly above.

model A copy of an object, often smaller than the real thing.

mountain Part of the earth that is much taller than the land around it.

needs Things that make it possible to live.

neighborhood An area where people live.

ocean One of the five large bodies of salt water that cover most of the earth.



river A long, narrow body of water. The water in a river flows downhill.

rule Statement that tells what to do or what not to do.

season A part of the year that is hotter or colder than the part of the year that came before. The four seasons are winter, spring, summer, and fall.



state Part of a country. There are 50 states in the United States of America.

symbol Line, shape, color, or object that stands for something else.

view What can be seen from a certain place, looking in a certain direction.

wants Things that make life more fun.

All these words are used in the atlas.



Find
countries
here!



Index

A-B-C

Afghanistan, Asia	42
Albania, Europe	40
Algeria, Africa	38
Angola, Africa	38
Argentina, South America	36
Armenia, Asia	42
Australia, Indian Ocean	44
Austria, Europe	40
Bahamas, Atlantic Ocean	34
Bangladesh, Asia	42
Belarus, Europe	41
Belgium, Europe	40
Bolivia, South America	36
Bosnia-Herzegovina, Europe	40
Botswana, Africa	38
Brazil, South America	36
Bulgaria, Europe	40-41
Burkina Faso, Africa	38
Burundi, Africa	38
Cambodia, Asia	43
Cameroon, Africa	38
Canada, North America	34
Central African Republic, Africa	38
Chad, Africa	38
Chile, South America	36
China, Asia	42-43
Colombia, South America	36
Congo Republic, Africa	38
Costa Rica, North America	34
Côte d'Ivoire, Africa	38
Croatia, Europe	40
Cuba, Caribbean Sea	34
Czech Republic, Europe	40

D-E-F

Democratic Republic of the Congo, Africa	38
Denmark, Europe	40
Djibouti, Africa	38
Dominican Republic, Caribbean Sea	34
East Timor, Asia	43
Ecuador, South America	36
Egypt, Africa and Asia	38
El Salvador, North America	34
Eritrea, Africa	38
Estonia, Europe	41
Ethiopia, Africa	38
Finland, Europe	40-41
France, Europe	40

G-H-I

Gabon, Africa	38
Gambia, Africa	38
Georgia, Asia and Europe	42
Germany, Europe	40
Ghana, Africa	38
Greece, Europe	40-41
Guatemala, North America	34
Guinea, Africa	38
Guyana, South America	36
Haiti, Caribbean Sea	34
Honduras, North America	34
Hungary, Europe	40
Iceland, Atlantic Ocean	40
India, Asia	42-43
Indonesia, Asia	43
Iran, Asia	42
Iraq, Asia	42
Ireland, Europe	40
Israel, Asia	42
Italy, Europe	40

J-K-L

Jamaica, Caribbean Sea	34
Japan, Asia	43
Jordan, Asia	42
Kazakhstan, Asia and Europe	42
Kenya, Africa	38
Kosovo, Europe	40
Kuwait, Asia	42
Laos, Asia	43
Lebanon, Asia	42
Latvia, Europe	40-41
Liberia, Africa	38
Libya, Africa	38
Lithuania, Europe	40-41

M-N-O

Macedonia, Europe	40
Madagascar, Africa	38
Malawi, Africa	38
Malaysia, Asia	43
Mali, Africa	38
Mauritania, Africa	38
Mexico, North America	34
Moldova, Europe	41
Mongolia, Asia	42-43
Montenegro, Europe	40
Morocco, Africa	38
Mozambique, Africa	38
Myanmar, Asia	42-43
Namibia, Africa	38
Nepal, Asia	42

Netherlands, Europe	40
New Zealand, Pacific Ocean	44
Nicaragua, North America	34
Niger, Africa	38
Nigeria, Africa	38
North Korea, Asia	43
Norway, Europe	40-41
Oman, Asia	42

P-Q-R

Pakistan, Asia	42
Panama, North America	34
Papua New Guinea, Pacific Ocean	44
Paraguay, South America	36
Peru, South America	36
Philippines, Asia	43
Poland, Europe	40-41
Portugal, Europe	40
Qatar, Asia	42
Romania, Europe	40-41
Russia, Europe and Asia	40-43
Rwanda, Africa	38

S-T-U

Saudi Arabia, Asia	42
Senegal, Africa	38
Serbia, Europe	40
Sierra Leone, Africa	38
Singapore, Asia	43
Slovakia, Europe	40
Slovenia, Europe	40
Somalia, Africa	38
South Africa, Africa	38
South Korea, Asia	43
South Sudan, Africa	38
Spain, Europe	40
Sri Lanka, Asia	42
Sudan, Africa	38
Sweden, Europe	40-41
Switzerland, Europe	40
Syria, Asia	42
Taiwan, Asia	43
Tanzania, Africa	38
Thailand, Asia	43
Tunisia, Africa	38
Turkey, Asia and Europe	42
Turkmenistan, Asia	42
Uganda, Africa	38
Ukraine, Europe	40-41
United Kingdom, Europe	40
United States, North America	28-29
Uruguay, South America	36
Uzbekistan, Asia	42

V-W-X-Y-Z

Venezuela, South America	36
Vietnam, Asia	43
Yemen, Asia	42
Zambia, Africa	38
Zimbabwe, Africa	38

Abbreviations

AK	Alaska	KS	Kansas	NY	New York
AL	Alabama	KY	Kentucky	OH	Ohio
AR	Arkansas	LA	Louisiana	OK	Oklahoma
AZ	Arizona	MA	Massachusetts	OR	Oregon
Bosnia	Bosnia- Herzegovina	MD	Maryland	PA	Pennsylvania
CA	California	ME	Maine	RI	Rhode Island
CO	Colorado	MI	Michigan	S	south
CT	Connecticut	MN	Minnesota	SC	South Carolina
D.C.	District of Columbia	MO	Missouri	SD	South Dakota
DE	Delaware	MS	Mississippi	TN	Tennessee
E	east	MT	Montana	TX	Texas
FL	Florida	N	north	U.S.	United States
GA	Georgia	NC	North Carolina	UT	Utah
HI	Hawaii	ND	North Dakota	VA	Virginia
IA	Iowa	NE	Nebraska	VT	Vermont
ID	Idaho	NH	New Hampshire	W	west
IL	Illinois	NJ	New Jersey	WA	Washington
IN	Indiana	NM	New Mexico	WI	Wisconsin
		NV	Nevada	WV	West Virginia
				WY	Wyoming

OFFICIAL OKLAHOMA ADOPTION REVIEW
DO NOT REPRODUCE



Photo Credits

Credit Abbreviations: **iS**—iStock by Getty Images; **TS**—Thinkstock Photos by Getty Images
Any image in this atlas not explicitly credited below is in the public domain.

front cover, left © Don Graham/CC-BY-SA 2.0; **front cover, right** © Monkey Business Images/iS/TS; **back cover** © Monkey Business Images/TS; **4 A** © Jef Nickerson/CC-BY-SA 2.0; **4 B** © FEMA/Adam DuBrowa; **4 C** © Bob Carney/CC-BY 2.0; **5 F** © Rebecca Siegel/CC-BY 2.0; **5 G** © Don Graham/CC-BY-SA 2.0; **5 H** © Jeramey Jannene/CC-BY- 2.0; **6 A** © La Citta Vita/CC-BY-SA 2.0; **6 B** © Paul Sableman/CC-BY 2.0; **7 C** © La Citta Vita CC-BY-SA 2.0; **7 D** © IDuke/CC-BY-SA 2.5; **7 E** © Sheila Sund/CC-BY-2.0; **8 A** © Chiyo Hoshikawa/TS; **8 B** © Oakley Originals/CC-BY 2.0; **8 C** © Parker Night/CC-BY 2.0; **9 D** © Julie Corsi/CC-BY 2.0; **9 E** © Nick Sarebi/CC-BY 2.0; **9 F** © John Morgan/CC-BY 2.0; **10 A** © Glasseyes View/CC-BY-SA 2.0; **10 B** © Moodboard/TS; **10 C** © Monkey Business Images/TS; **11 D** © Andrew Magill/CC-BY 2.0; **11 E** © Matthias Ripp/CC-BY 2.0; **12 A** © Monkey Business Images/iS/TS; **12 B** © Darrin Henry/iS/TS; **12 C** © Werner100359/CC-BY-3.0; **13 D** © D. Grilla/iS/TS; **13 E** © M_AI Photography/CC-BY 2.0; **13 F** © Arlington County/CC-BY-SA 2.0; **18 A** © Rachel Kramer/CC-BY 2.0; **18 B** © Loco Steve/CC-BY 2.0; **18 C** © Steve Cyr/CC-BY-ND 2.0; **19 D** © Max Gag/CC-BY-ND 2.0; **19 E** © Diego Cambiaso/CC-BY-SA 2.0; **19 F** © Ken Lund/CC-BY-SA 2.0; **20 A** © Nystrom; **20 B** © Christian Fischer/CC-BY-SA 3.0; **21 C** © Courtesy of NASA, Visible Earth; **26 A** © Courtesy of NASA,

Earth from Space; **30 A** © Madeleine Holland/CC-BY 2.0; **30 B** © Mike Mozart/CC-BY 2.0; **31 D** © Raul654/CC-BY-SA 3.0; **31 E** © Albert E. Theberge, NOAA Corps/CC-BY 2.0; **32 top** © Valerie Hinojosa/CC-BY-SA 2.0; **32 bottom** © Derek Key/CC-BY 2.0; **33 top** © Tim Evanson/CC-BY-SA 2.0; **33 bottom** © Jerry Stratton/CC-BY-SA 3.0; **35 A** © Chensiyuan/CC-BY-SA 2.0; **35 B** © Kris Krüg/CC-BY-SA 2.0; **35 C** © OMGimages/iS/TS; **35 D** © Dennis Jarvis/CC-BY-SA 2.0; **35 E** © Team at Carnaval.com Studios/CC-BY 2.0; **37 A** © Creatas/TS; **37 B** © Félix Batista/CC-BY 2.0; **37 C** © Bruce Tuten/CC-BY 2.0; **37 D** © Ayuda en Acción/CC-BY-SA 2.0; **37 E** © Eric Chan/CC-BY 2.0; **39 A** © Julien Harneis/CC-BY-SA 2.0; **39 B** © Dennis Jarvis/CC-BY-SA 2.0; **39 C** © Alliance of Religions and Conservation/CC-BY 2.0; **39 D** © Julius Cruickshank/CC-BY 2.0; **39 E** © Vaiz Ha/CC-BY 2.0; **40 A** © Faungg's Photo/CC-BY-ND 2.0; **40 B** © Henry Yau/CC-BY-SA 2.0; **41 C** © Rafael Reis/CC-BY 2.0; **41 D** © Caroline Jiang/CC-BY-ND 2.0; **41 E** © Cuito Cuanavale/CC-BY 2.0; **42 A** © Noam Armonn /iS/TS; **42 B** © Ryan McVay/Digital Vision/TS; **43 C** © Mark Fischer/CC-BY-SA 2.0; **43 D** © Mark Fischer/CC-BY-SA 2.0; **43 E** © Dominik Golenia/CC-BY-ND 2.0; **44 A** © Mark Roy/CC-BY 2.0; **44 B** © IPG Gutenberg UK Ltd/iS/TS; **45 C** © Christopher Michel/CC-BY 2.0



Join the Block Buddies as they help you explore this atlas and learn about . . .

- *Where people live and work*
- *What our needs and wants are*
- *How maps show real places*
- *What children are like around the world*
- **AND MUCH MORE!**



v2.5

NPX-NYS0010 978-0-7825-1022-5



9 780782 510225



NYSTROM
EDUCATION