



**TKM**

The Knife Manufacturers



**TOOLS FOR  
SAWMILL INDUSTRY**

## TKM – THE COMPANY

---

The TKM Group is an international leader in the manufacture of high-quality machine knives and related products for technical applications.

This independent family-owned business, which has been setting benchmarks for quality and innovation for over 100 years, now employs a

workforce of approximately 1000 employees at more than 12 production sites and sales entities.

The TKM brand enjoys a worldwide reputation for high quality, technical expertise and customer-oriented service.

## TKM – A POWERFUL BRAND

---

### **Our brand values define our high claims**

The focus of our business dealings is the core message: Reliability, the foundation of a trust-worthy partnership. Respect and commitment steer TKM's dealings and we fulfil our promises. The TKM brand slogan „Expertise United“ underlines our commitment to customers and means that customers can rely on the products and services of TKM.

Four basic characteristics which determine our dealings and claims complement the core message of reliability:

### **High quality**

Our name has been synonymous with the highest quality for decades. With training and further education, with the far reaching exchange of know-how, with the promotion of innovation and with the use of proven and new technologies we do everything to ensure that our products remain of the highest quality.

### **Open-minded**

As a reliable and strong partner, we offer our customers the innovative momentum of an open minded company. With our market orientation and international flair we are always ready to examine new ideas and new approaches.

### **Trustworthy**

Our customers value the trustworthy cooperation which is characterized by respect and mutual reliance. With expert advice and comprehensive service, we help customers achieve their goals.

### **Innovative**

Together with customers and partners we promote and develop knife innovations of the future.

[www.tkmgroup.com](http://www.tkmgroup.com)

## CONTENT

---

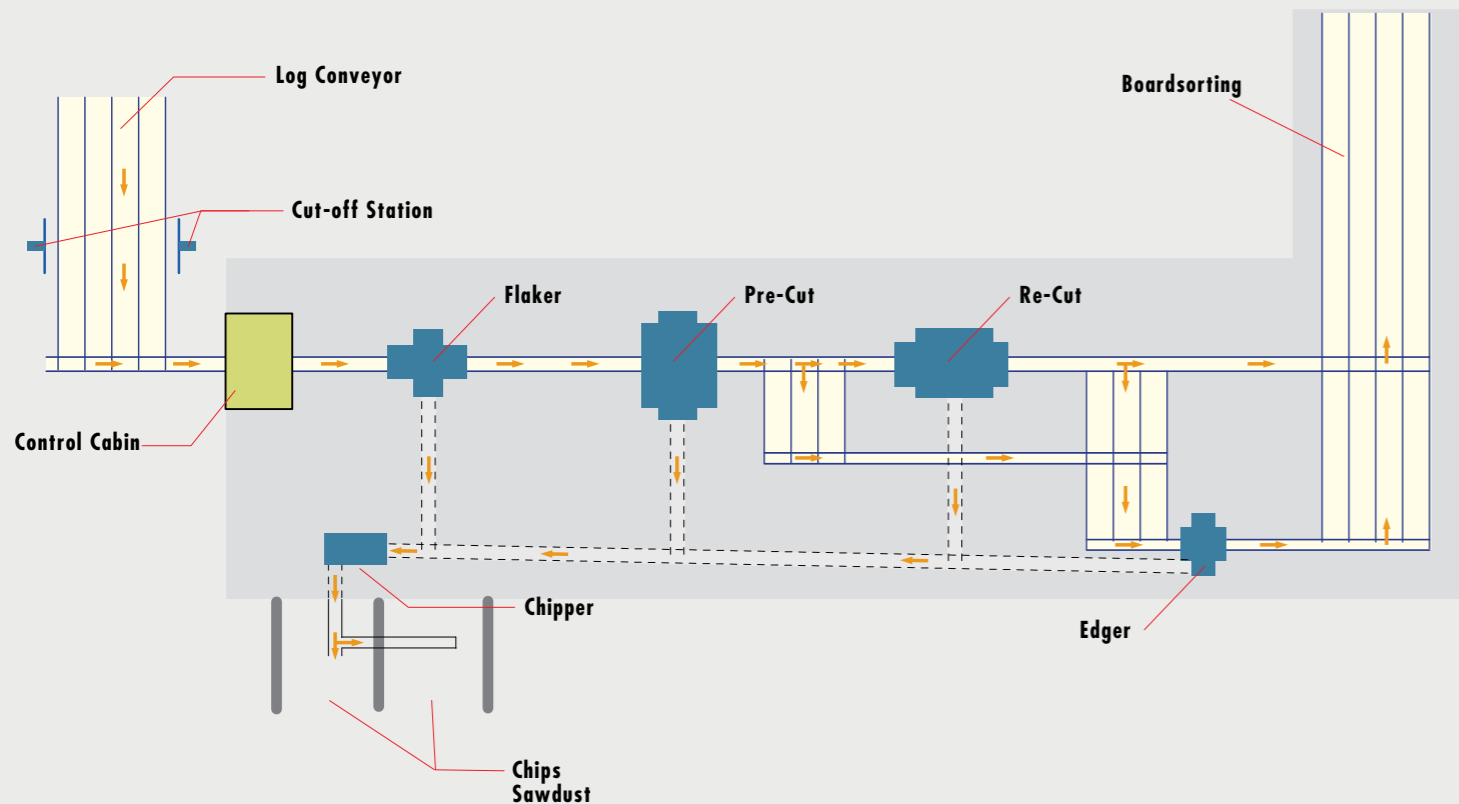
INDIVIDUAL SOLUTIONS FOR SAWMILL INDUSTRY	4
SEGMENTS / RINGS FOR CHIPPER CANTER	5
KNIVES FOR CHIPPER CANTER	6
CIRCULAR SAW BLADES FOR PRE-CUTTING	7
CIRCULAR SAW BLADES FOR PROFILING	9
EDGER CIRCULAR SAW BLADES	10
CROSS CUTTING CIRCULAR SAW BLADES	11
ACCESSORIES FOR CIRCULAR SAW BLADES	13
GANG SAW BLADES	14
ACCESSORIES FOR GANG SAW MACHINERY	15
CHIPPER AND COUNTER KNIVES	17
OUR LOCATIONS	19

## INDIVIDUAL SOLUTIONS FOR SAWMILL INDUSTRY

We provide customer specific solutions for the complete saw line:

- Knives/segments/rings for chipper canter
- Circular saw blades for pre-cutting and profiling
- Edger circular saw blades
- Chipper knives
- Special products

SCHEMATIC DESIGN OF A SAW LINE



## SEGMENTS / RINGS FOR CHIPPER CANTER

The development of the profile chipper canter technology was the pre-condition for the high productivity of modern saw lines.

The TKM-Group supplies chipper canter segments and rings for all types of saw mill machines. Development of our tools assure additional customer benefits

### DESCRIPTION

segments and segment rings with tungsten carbide or stellite teeth  
 patented SWITCH execution (two part segment ring connected by screws)  
 SAWMASTER+ (special tooth shape)

### TECHNICAL DETAILS



## KNIVES FOR CHIPPER CANTER

**DESCRIPTION** By using TKM knives for profile chipper canter units one can achieve high and homogeneous quality of chips as demanded by the paper and pulp industry.

**TECHNICAL DETAILS** **Material in use**  
■ Chipper steel and special alloys



## CIRCULAR SAW BLADES FOR PRE-CUTTING

**DESCRIPTION** New technologies in the saw mill industry continuously demand more high quality tools.

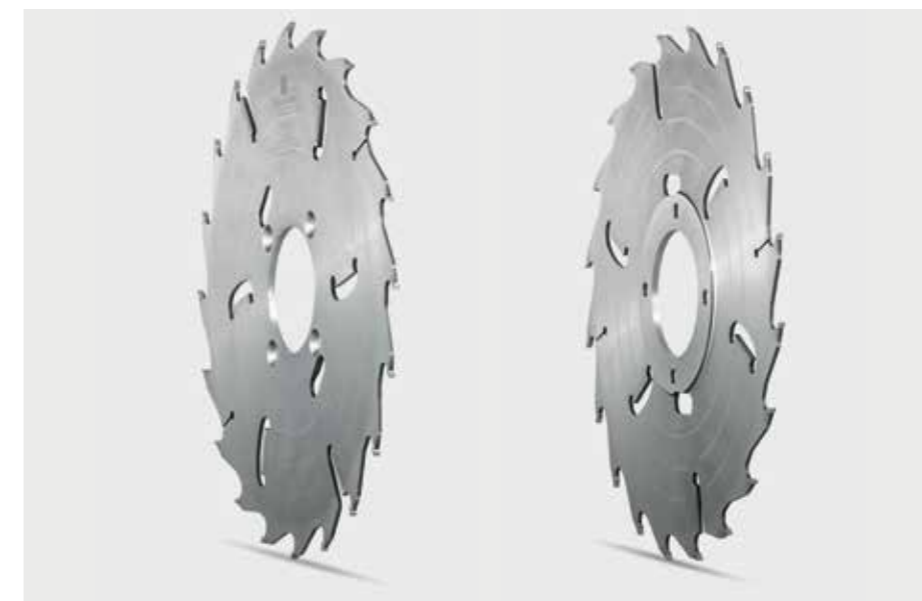
TKM-Group supplies saw blades for pre-cutting for all types of saw mill machines. We are specialized to supply precision tools for appropriate applications for each of our customers.

Together with our customers we are doing constant research and development to be able to produce the optimal saw blade for our customers.

An innovative alternative, developed by TKM is the saw blade type „RIV“, a two part pre-cutting saw blade connected by rivets. This innovation convinced by ecological production, reduction of vibrations and optimal performing of tension.

**Type**  
SOLID (made from full material, ground or milled) ,  
RIV (two part saw blade connected by rivets)  
SWITCH (two part saw blade connected by screws)

diameter up to 700 mm, for single-arbor machines up to 1200 mm



# CIRCULAR SAW BLADES FOR PROFILING

Accuracy in sawing and maximum output demands heavy duty circular saw blades.

**DESCRIPTION**

TKM-Group supplies saw blades for profiling for all types of saw mill machines. We are specialized in supplying precision tools for appropriate applications in different executions.

**Type**

- SOLIDUS
- THERMEX, PLUS = thermic processed (higher flexibility and stability)
- GLIDE, HARD CHROME PLATED = smooth surface (reduce friction)
- VARIO = with unequal tooth gap

**TECHNICAL DETAILS**

diameter up to 1000 mm, for single-arbor machines up to 1200 mm



## EDGER CIRCULAR SAW BLADES

**DESCRIPTION** For edger units the stellite tipped saw blade is established. The advantage of the stellite tooth enables best cutting results in high speed sawing.

TKM-Group supplies saw blades for edging for all types of saw mill machines.

### TECHNICAL DETAILS

#### Type

CV-alloyed and hard chrome plated CV-alloyed (for setting and sharpening)  
stellite tipped  
tungsten carbide tipped

diameter up to 700 mm



## CROSS CUTTING CIRCULAR SAW BLADES

**DESCRIPTION** Our cross cutting saw blades have been used in all well known cutting and trimmer units. The standard of these saw blades is continuously improved by consequent product development.

The spring tooth saw blade is developed by **TKM TTT Finland OY**. Big advantages are output, economy and less maintenance.

The spring tooth is the secret of this saw blade. A “C”-shaped tungsten carbide tipped segment, which is mounted by rivets on the saw blade body

#### Type

CV-alloyed and hard chrome plated CV-alloyed (for setting and sharpening)  
tungsten carbide tipped  
with inter changeable spring teeth (log cross cutting units)

diameter up to 2400 mm



### DESCRIPTION

### TECHNICAL DETAILS



## ACCESSORIES FOR CIRCULAR SAW BLADES

TKM supplies needed accessories such as

- limiting milling cutter
- distance rings
- tungsten carbide tips

DESCRIPTION

limiting milling cutter tungsten carbide tipped  
 distance rings made from steel and aluminium (tolerance  $\pm 0,01$ )  
 tungsten carbide tips with or without solder

TECHNICAL  
DETAILS



## GANG SAW BLADES

**DESCRIPTION** Long time experience and the handling of our production process make us to a competent producer of gang saw blades.

Flexible production and operation with laser cutters guarantees a tailor made gang saw blade for your saw machine.

**TECHNICAL DETAILS**  
STANDARD = for set and swaging  
HARD CHROME PLATED = 12-15  $\mu$  chrome thickness (for set)  
CHROMAT = 22-25  $\mu$  chrome thickness (for set)  
STELLITE tipped = ready for use



Gang saw blade stellite



Gang saw blade hard chrome plated

## ACCESSORIES FOR GANG SAW MACHINERY

TKM supplies the fitting accessories for your gang saw machine such as

**DESCRIPTION**

- hydraulic tensioning system
- hanger sets with cementer and for wedge system
- standard and reversible wedge
- distance rings (round und oval shaped)
- spacers





## CHIPPER AND COUNTER KNIVES

High alloyed tool steel is the most used material for TKM knives.

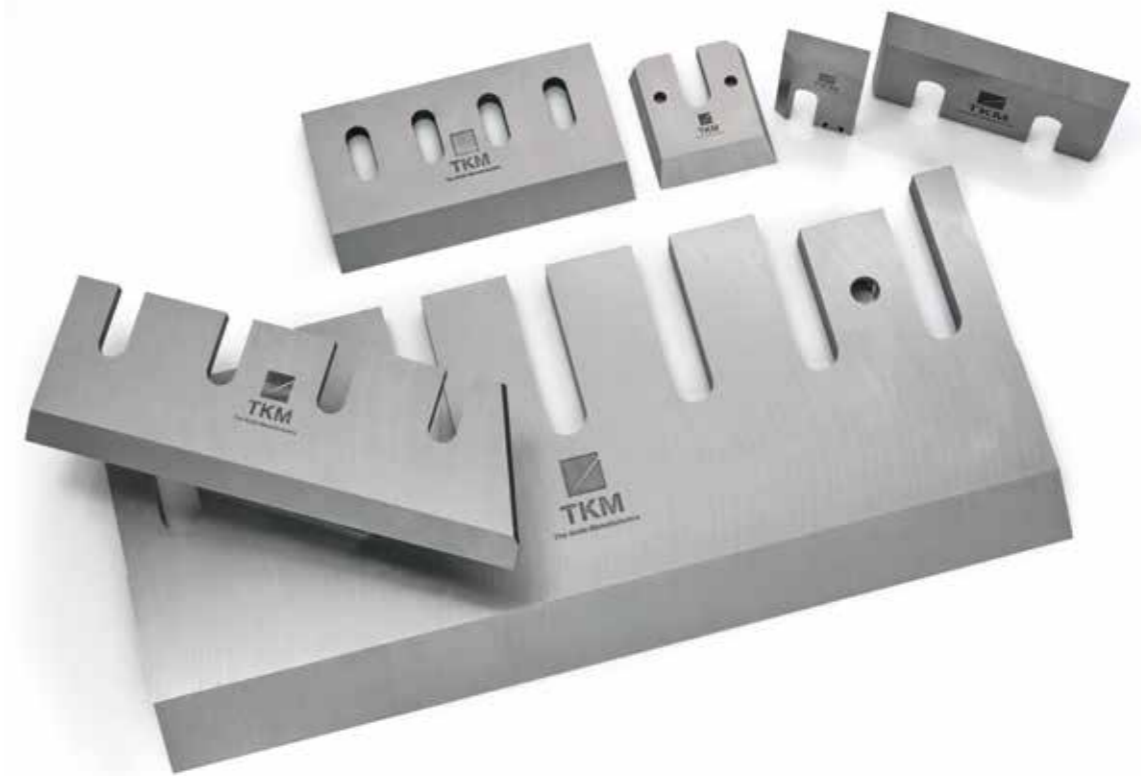
Our customers produce high quality chips with TKM chipper knives with longest possible service life.

DESCRIPTION

### Material in use

- Chipper steel and special alloys

TECHNICAL  
DETAILS





## OUR LOCATIONS

---

### Europe

**TKM GmbH**

In der Fleute 18  
42897 Remscheid  
Germany

**TKM Geringswalde GmbH**

Mittweidaer Str. 44  
09326 Geringswalde  
Germany

**TKM Meyer GmbH**

Heinrich-Hertz-Str. 17  
22941 Bargteheide  
Germany

**TKM Austria GmbH**

Waidhofner Str. 11  
3333 Böhlerwerk  
Austria

**TKM Austria GmbH**

Venusberger Str. 22  
3133 Traismauer  
Austria

**TKM Diacarb BV**

Hoofdweg 50  
2908 LC Capelle a/d  
Ijssel  
The Netherlands

**TKM France SARL**

5/8, avenue  
Henri Poincare  
ZA Ravennes les Francs  
59910 Bondues.  
France

**TKM TTT Finland Oy**

Jokiniementie 20  
37800 Akaa/Toijala  
Finland

### Asia

**TKM China Co., Ltd.**

Rm 8004, Yongxin  
Mansion,  
No. 887 Huai Hai Zhong  
Road,  
Shanghai 200020  
P. R. China

**TKM Blades Malaysia Sdn. Bhd.**

Unit H01-1  
Plaza Kelana Jaya,  
Jalan SS7/13A,  
47301, Petaling Jaya,  
Selangor  
Malaysia

**TKM Singapore Pte. Ltd.**

Unit H01-1  
Plaza Kelana Jaya,  
Jalan SS7/13A,  
47301, Petaling Jaya,  
Selangor  
Malaysia

### America

**TKM United States Inc.**

1845 Airport Exchange  
Blvd - Suite 150  
Erlanger, KY 41018  
USA

**TKM Canada Inc.**

133 Menard  
JOE-2AO St-Alphonse  
Du Granby  
Canada



**TKM**

The Knife Manufacturers

---

**TKM  
TKM GERINGSWALDE  
TKM MEYER  
TKM DIACARB**

**TKM FRANCE  
TKM AUSTRIA  
TKM US  
TKM TTT FINLAND**

**TKM CANADA  
TKM CHINA  
TKM BLADES MALAYSIA  
TKM SINGAPORE**

---

**EXPERTISE UNITED**