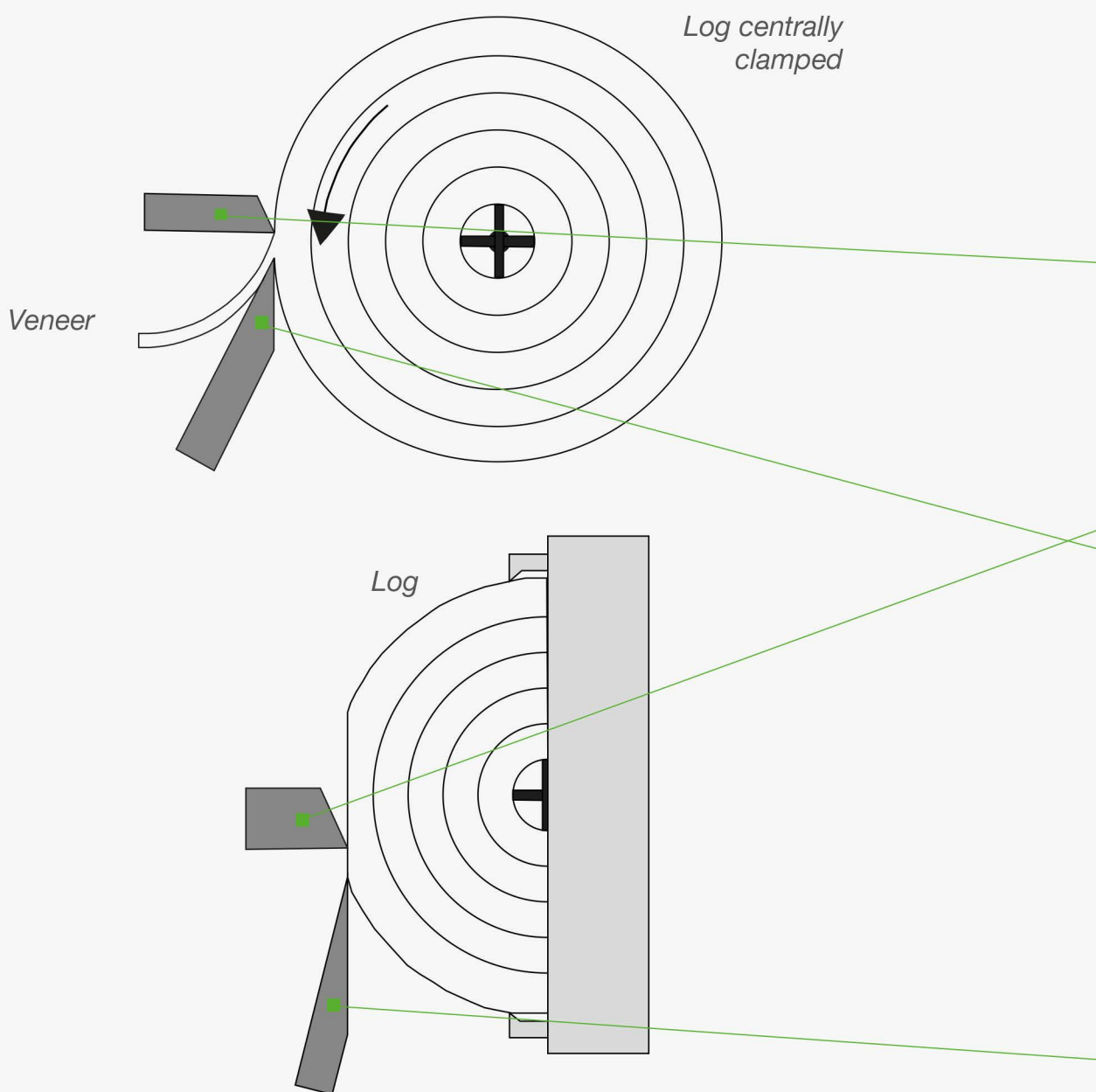


Knives for the veneer and plywood industry



The TKM Group has been manufacturing high-quality veneer slicing and peeling knives for the veneer and plywood industry for over 100 years. Our specialized manufacturing and vast application knowledge qualifies us as cutting experts for wood having various characteristics and qualities.

Owing to our unique corporate structure, we have an acquired proficiency in working with a variety of customers, OEMs, markets and industries. We continue

to deepen this solid experience at our various production sites by developing specific cutting solutions considering each customer's machines, processes and products.

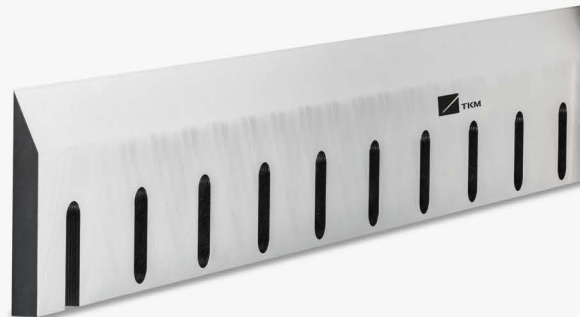
Cutting solutions are more than simply choosing the right veneer slicing and peeling knives for the main cutting process.



Pressure Bar



Peeling Knife



Veneer Knife

Optimization of the upstream and downstream cutting development is equally important; therefore, we also produce a complete line of complimentary tools and accessories for the veneer and plywood industry.

- Veneer slicing knives
- Peeling knives
- Pressure bars
- Veneer guillotine and clipper knives

- Cut-off saw blades
- Debarker knives
- Chipper and counter knives
- Scoring knives

Continuous improvement of all cutting processes ultimately leads to a consistent high-quality final product for our customers.

Veneer slicing and rotary peeling knives

The main goals of “peeling” and “slicing” consistent veneer center upon a precision perfect cut which directly influences the grade and the dimensional properties of the final product.

Accordingly TKM veneer slicing and peeling knives are both manufactured according to the highest possible standards for state-of-the-art industrial cutting tools. Application specific selections of raw materials, in-house custom heat treating processes and cutting geometries tailored to each customer application ensure that our veneer slicing and peeling knives deliver the best possible cutting quality and extended life-time.



Technical Characteristics

Dimensions	Length up to 6000 mm, width up to 250 mm
Hardness	Standard 56 ... 60 +- 1 HRc
Tolerances	Cutting edge straightness [mm]: <3000 = 0.5 / >3000 = 1.0
Heat Treatment	solid or partially hardened
Surface Characteristics	up to Ra 0.25 µm

Further benefits are veneer thickness consistency combined with a smooth, homogeneous surface without discoloration or damage to the unique wood structure.

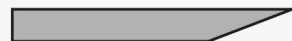
In addition, the customer specific design of our knives brings reduced cutting machine effort, lower power consumption and fewer knife changes when producing veneers in thick and thin cutting ranges.



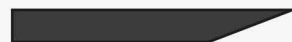
As critical as selecting the best log and wood quality is for our customers, so is the highest attainable alloy steel purity essential for the production of our knives. Given our decades of experience, three principal qualities are followed based on cutting and application variables:



■ Compalloy / Compound



■ Solid / Ventan S



■ Novacrom / Antannin

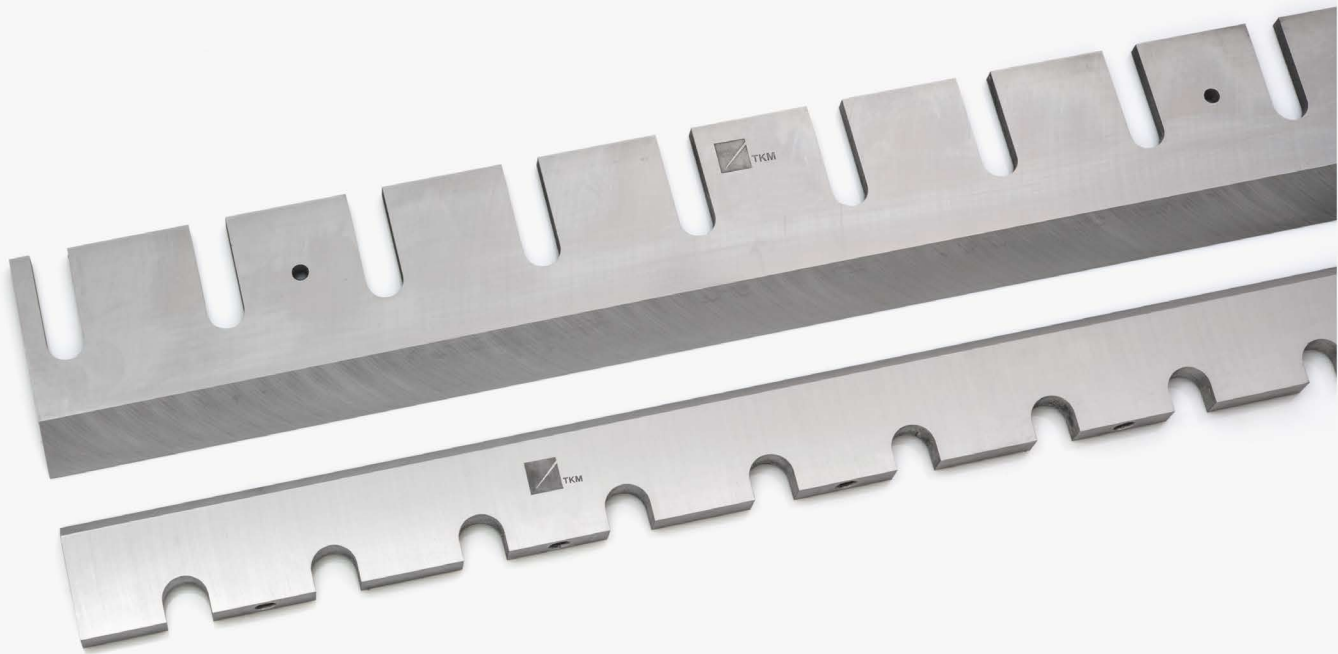
Versions and specifications

- **Compalloy / Compound:** with high-performance steel inlay
- **Solid / Ventan S:** through hardened made from high-performance steel
- **Novacrom / Antannin:** through hardened and stain resistance made from high-performance chrome steel
- **Individual special versions**

Pressure bars

A high-quality pressure bar is also indispensable to achieve a precision perfect cut since it determines the production relevant cutting thickness for the specific veneer process. Specifying the correct relationship of knife and pressure bar design and steel composition is crucial.

TKM pressure bars are manufactured to the same high-tech production methods and standards as our veneer slicing and peeling knives and in doing so present our customers with complete and precise long-term cutting solutions.



Versions and specifications

- **Tecalloy / Tool Steel:** induction hardened made from high-performance steel
- **Stainless / Inoxid:** induction hardened made from high-performance stainless steel
- **Stellite:** welded
- **Individual special versions**