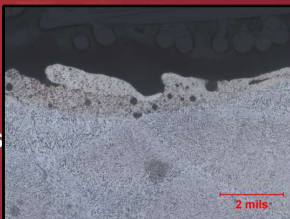


Additive Manufacturing Analyses

Powder Analysis - We provide chemical analysis (ICP-MS, ICP-AES), percent crystallinity, particle size (Microtrac), and morphology (XRD, SEM & optical) to fully characterize your starting powder.

Metallography - Our team employs many advanced mounting, polishing and examination techniques to thoroughly evaluate the most advanced coatings.



Tensile Testing - IMR provides coating adhesion testing of samples, both as coupons or on part geometries.

Fatigue Testing - We provide shear strength and shear fatigue testing of samples from test bars to actual coated parts.



Rotating Beam

Fatigue Testing - A valuable tool for evaluating coatings under reverse bending conditions

Density Testing - An important test IMR performs to determine the compactness of a material.

Compression Testing - An essential test that allows IMR to determine how much force a sample can handle.

Failure Analysis - Our experienced team of metallurgists and material scientists possesses the specialized knowledge to determine why coatings fail.

Not just data, *knowledge*

IMR Test Labs

131 Woodsedge Drive
Lansing, NY 14882 USA
1.607.533.7000
sales@imrtest.com

IMR Test Labs - Louisville

4510 Robards Lane
Louisville, KY 40218 USA
1.502.810.9007
sales@imrlouisville.com

IMR Test Labs - Portland

5687-A SE International Way
Portland, OR 97222 USA
1.503.653.2904
sales@imrportland.com

IMR Test Labs - Singapore

30 Loyang Way #03-16
Singapore 508769
+65 6592.5325
sales@imrsingapore.com

IMR Test Labs - Suzhou

Jiangpu Road 75, Shengpu Town
Suzhou Industrial Park
Jiangsu, China 215126
+86 0512.6295.2682
sales@imrsuzhou.com

www.imrtest.com

www.cwst.com

**CURTISS-
WRIGHT**

©2017 IMR Test Labs

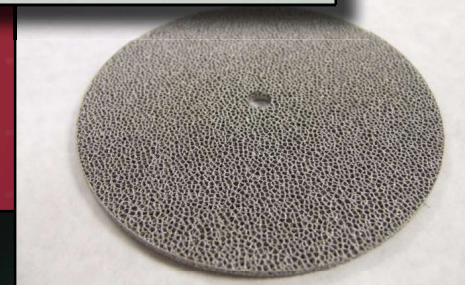
IMR TEST LABS

A Curtiss-Wright Business

Analytical Services

for

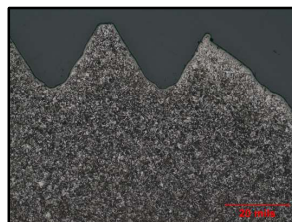
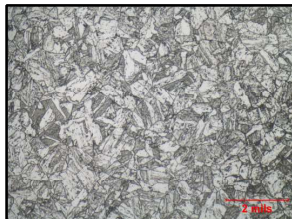
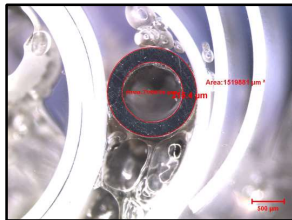
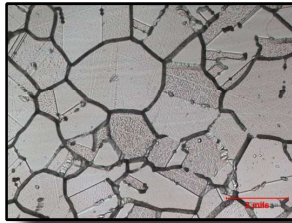
Additive Manufacturing



Not just data, *knowledge*

Metallurgical Evaluations

- Alpha Case
- Aggressive Machining Evaluations
- Braze Analysis
- Case Depth
- Certified Weld Inspections
- Coatings Analysis
- Decarburization
- Failure Analysis
- Fractography/Fracture Mechanics
- Grain Size
- Image Analysis
- Inclusion Rating
- Intergranular Attack
- Intergranular Oxidation
- Macroetch/Microetch
- Metallography/Materialography
- Microhardness (Knoop, Vickers, MacroVickers)
- Microstructure
- Orientation in Microstructure
- Particle Analysis (Distribution, ID, Size)
- Phase Volume Determination
- Quantitative Image Analysis
- Root Cause Evaluation
- SEM Analysis
- Welder Qualification



Chemical Analysis

- Alloy Chemistry/Verification
- Ash Content
- C, H, O, N, S
- Chemical Resistance
- Cleanliness Testing
- Coating Weight
- Contaminant/Corrodent Analysis
- Density
- DSC Analysis (Melting Point, Glass Transition, % Crystallinity, Degree of Cure, Purity)
- Filler Content Analysis
- FTIR Analysis
- GC/MS Analysis
- Halogen Analysis (IC)
- Heavy Metal Impurities
- Hexavalent Chromium
- ICP-AES Analysis
- ICP-MS Trace Element Analysis
- Ion Chromatography (IC)
- Material Certification
- Mercury Analysis
- Metallic Material Verification/ID
- OES Analysis
- Particle Size Analysis
- Percent Crystallinity
- Phase Identification
- Positive Material ID (On-site PMI available)
- Powder Diffraction
- Precious Metal Assay
- RoHS Testing
- SEM/EDX
- Sieve Analysis
- Trace Element Analysis
- Unknown Material ID
- X-Ray Diffraction (XRD)
- XRF Chemistry



Mechanical Testing

- Bend Testing (3 Point, 4 Point)
- Bond Strength Testing
- Charpy Impact Testing (-320°F to 450°F)
- Coefficient of Thermal Expansion by TMA
- Composite Testing (FRC, CMC)
- Creep & Stress Rupture
- Fatigue Testing (Axial, Low Cycle, High Cycle, Rotating Beam, Coating Shear)
- Flexural Properties (Modulus, Strength, Stress-Strain Response)
- Fracture Mechanics
- Hardness (Rockwell, Brinell)
- Heat Aging
- Indentation Toughness
- Impact Testing (Charpy, IZOD)
- Lap Shear Testing
- Open Hole Tension/Compression
- Shear Properties
- Slow Strain Rate
- Taber Abrasion/Wear Resistance
- Tensile Testing - Metals (to 2000°F)
- Torsional/Axial Fatigue (200 lb)

