



ROMANTICS & REALISTS

WINTER 2018



EASY NOW



YEAR OF THE DOG



STORYTELLERS



FIRST LOOK vignettes Where storage, style and convenience are needed, the 31.5-inch-high Salvador console from **Manhattan Comfort** rises to the occasion. It comes in a white/dark oak finish combination that complements several leading paint manufacturers' 2018 colors of the year. See this piece in play in the FIRST LOOK products vignettes, which are centrally located in the Grand Plaza Courtyard Jan. 28 - Feb. 1. **B755**



Delights abound during Las Vegas Market, Jan. 28-Feb. 1. For starters, the inimitable architect Frank Gehry has been named 2018 Design Icon. To wit, he'll deliver a keynote address Tuesday, Jan. 30 at 3 p.m. in Building B Worldview on Sixteen. Awesome!

The first semiannual Artexpo Las Vegas opens its doors this winter; more than 100 suppliers of fine art, sculpture, wall art and prints will be housed in Pavilion 2.

Plus, co-organizer Redwood Media Group offers a comprehensive seminar track filled with best practices for succeeding in the fine art category. Inspiring!

Las Vegas Market is host to the 13th Housewares Design Awards Celebration, which will include an industry networking opportunity; a celebration of finalists; the announcement of winners; and the naming of the Design Influencer of the Year Award winner. Kudos!

Now, to brass tacks ... new products! Las Vegas Market offers a best-in-class and one-of-a-kind assortment that spans categories from home furnishings and housewares to gifts and casual furniture. FIRST LOOK points the way.

This year's themes, which are realized during market in the Grand Plaza Courtyard vignettes:

FIRST LOOK is produced by Nine Muses Media LLC for Las Vegas Market. Las Vegas Market is owned and managed by International Market Centers, L.P., the world's largest operator of premier showroom space for the furnishings, home decor and gift industries. No part of this publication may be reproduced in whole or part without prior permission of IMC. Opinions expressed in FIRST LOOK are not necessarily those of Nine Muses Media LLC or IMC.

- **Romantics & Realists** rounds up 2018 colors of the year from leading paint manufacturers. You won't find PANTONE®'s top pick for 2018, Ultra Violet 18-3838, here (though you can learn about this hue in a CEU seminar — see the back cover). Instead, find watery blues, serene grays and dramatic accent hues.



FIRST LOOK vignettes

Reina vases from Cyan Design. A236

- In **Easy Now**, Benjamin-Moore's Caliente AF 290 is the backdrop for a dining and housewares vignette. We mix natural finishes and bright whites for a casual brunch scene.



FIRST LOOK vignettes

Darwin dining chair from New Pacific Direct. A654

- In **Year of the Dog**, a cross-category product showcase that nods to the Chinese zodiac calendar, kick back in a lounge-inspired space filled with furnishings and gifts.



FIRST LOOK vignettes

"The Sky's the Limit" greeting card from Design Design. C1044

- Lastly, **Storytellers** celebrates the makers and curators of artisanal products. We're presenting everything from soap confections to digitally printed furniture.



FIRST LOOK vignettes

Lotus Jewelry Studio's Memory Plate necklaces. C1023, C1024

For even more market buzz, follow Las Vegas Market's social media channels. Check out the FIRST LOOK boards at [Pinterest.com/LasVegasMarket](https://www.pinterest.com/LasVegasMarket/), for instance. And look for posts by FIRST LOOK editor and curator Julie Smith Vincenti during the #ViewOnVegas Instagram Takeover @LasVegasMarket.

Let the #LVmkt shopping begin!

ROMANTICS & REALISTS

LEADING PAINT MANUFACTURERS' COLORS OF THE YEAR PAINT A LANDSCAPE OF WATERY HUES, BLUE-CAST GRAYS AND INDIGO-BLACKS. SPOT SEVERAL EXAMPLES IN FIRST LOOK'S ROMANTICS & REALISTS VIGNETTE, ON VIEW JAN. 28 – FEB. 1 IN THE GRAND PLAZA COURTYARD.



FIRST LOOK: **TOV Furniture's** sumptuous Arno is available in Blush, Grey and Sea Blue (shown) velvet. **vignettes** The generous channel tufts continue along the back of this 87-inch-wide sofa. **B658**

FIRST LOOK
vignettes

The 40-inch Grace mirror is framed by rows of tear-shaped glass gems in hues of amethyst, amber, topaz and clear. From **Howard Elliott. A332**



FIRST LOOK
vignettes

Presley chair from **Orient Express** mixes Sea Glass velvet and stainless steel for a livable luxury effect. **B600**



"Three Figure Study No. 10" (left) and "Three Figure Study No. 23" are mixed media originals by artist Julie Schumer, who has employed abstract shapes, lines and colors to form recognizable figures. Schumer is one of dozens of artists featured in **Artexpo Las Vegas**, a fair that runs concurrent with Las Vegas Market this winter. **Pavilion 2**



Chaos Theory by Kavi, a hand-knotted rug from **Jaipur Living**, is a study in nature's seemingly "cluttered" patterns. **B424**

ROMANTICS & REALISTS *continued*



Kimono Blue Silk, new from **Tempaper** for 2018, showcases a pattern of flowers and trees inspired by a vintage silk kimono. A single roll of this removable wallpaper covers 56 square feet of wall space. **C584**

Palliser expands its presence at Las Vegas Market this winter with a robust showing of new upholstery, as well as casegoods from its recent acquisition, the **Casana** brand. This is the Podium bedroom. **B1001**



FIRST LOOK vignettes

KAS Rugs' Illusions machine-made polypropylene area rug is available in four sizes. This is the Teal Moderne colorway. **B175**



FIRST LOOK vignettes

Dimond Lighting's Fête metal table lamp in Dark Gold lights up FIRST LOOK's Romantics & Realists vignette. Look for the company's Spectacle chandelier in the display, too. **A344**

Squalls of blue, white and gray create "Cool Day," a hand-painted abstract on canvas from **Vertuu Design**. **B365**

COLOR TRENDS 2018

FIRST LOOK's Romantics & Realists vignette collects leading paint manufacturers' 2018 colors of the year to present a painterly color palette of stormy grays, watery blues and unexpected neutrals.

Heron
27-18

Heron 27-18, Pratt & Lambert's 2018 Color of the Year, is part of the brand's Intention palette, a thoughtful and restful lineup that encourages active mindfulness.

In The Moment
T18-15

In The Moment T18-15, Behr Paint's 2018 Color of the Year, endeavors to soothe, restore and calm by encouraging the viewer to disconnect and dwell in the here and now.

Black Flame
545-7

Pittsburgh Paints' 2018 Color of the Year, **Black Flame 545-7**, is a statement-making hue that mixes two classics: black and indigo.

Oceanside
SW 6496

Oceanside SW 6496, Sherwin-Williams' 2018 Color of the Year, offers a balance of blues and greens; it references jewel tones and marine life.

Black Magic
OL 116

Black Magic OL 116, Olympic Paint's 2018 Color of the Year, pairs with on-point grays, soft pinks and warm whites.

Deep Onyx
OONN07/000

Glidden's Deep Onyx OONN07/000 is a classic, deep black that can be put to service as a main wall color or as an accent.

EASY NOW

FIRST LOOK'S EASY NOW VIGNETTE GATHERS RELAXED FORMS AND FINISHES, AND POSITIONS THEM AGAINST A LIVELY BACKDROP: BENJAMIN MOORE'S 2018 COLOR OF THE YEAR, CALIENTE AF-290.



These servers may be smaller in stature than other **Bambu** designs, yet they boast all the same useful attributes: made from USDA-certified organic bamboo, naturally stain-resistant, anti-microbial, lightweight and food-safe. **C1112J**

Caliente
AF-290



The grand 70781 wood-and-rustic-metal chandelier suits a variety of interior styles, from Farmhouse and Cottage to Mediterranean and traditional European. From **Forty West Designs**. **A336**

ENERGY BOOST Flirt with adventure in 2018 by specifying Benjamin Moore's Color of the Year, Caliente AF-290. This fiery and transformative red is the backdrop for FIRST LOOK's Easy Now vignette, where it effortlessly enhances natural wood finishes and allows white finishes to pop. See the Easy Now vignette in the Grand Plaza Courtyard Jan. 28 – Feb. 1. Here, we showcase Caliente color complements selected by the Benjamin Moore design team for the year ahead.





FIRST LOOK
vignettes

Peugeot's patented Isen handle-driven mill performs superior grinding of flax seed in order to unlock the nutritional value of this gluten-free superfood. The stainless steel spoon and a cleaning brush are included. C1155



Coluna vases from **Blomus/SKS USA** elevate a bouquet of flowers to minimalist still life. Choose light or gray concrete-like finishes. Approximate heights are 8 inches to 11.5 inches. P1-4014



FIRST LOOK vignettes Basil candleholders/planters dress up the countertop. From **Cyan Design**. A236



FIRST LOOK vignettes Mercana's Stuart kitchen island on locking casters is made from Indian mango wood. The four drawers have glass fronts. Note, too, two metal racks for added storage, plus handy towel racks. B316, B346

UPGRADES AVAILABLE

ADDED FUNCTIONALITY ENHANCES THE DINING AREA.



FIRST LOOK vignettes Odin table's integrated USB-charging ports are a practical enhancement for both modern-day residences and workplaces. From Zuo Modern. **A442**



FIRST LOOK vignettes Cal Lighting's Silverton Dark Bronze fixture with wood accent is shown with glass shades. **A436**



White marble tops the optically intriguing Steel sideboard from Artmax. **B467**



A photograph is digitally reproduced on 100 percent polyester chenille to create Cypress area rug. It can be hung as wall art, too. By Allan Howze for **Gold Leaf Design Group**. C502

Dining table by morning, executive desk by afternoon, billiards table by night ... such are the possibilities of **Vision Billiards'** customizable convertible table. **P2-6004**

STAY HYDRATED

NOW SERVING AT LAS VEGAS MARKET: ON-THE-GO SOLUTIONS FOR COFFEE, TEA AND COLD BEVERAGES.



Sips Drinkware's Pursuit of Happiness ceramic tumbler has a double wall interior to conserve heat, and a silicone lid that helps to prevent spills. C1016

FIRST LOOK vignettes Twist travel mugs from **Kyocera** have a convenient twist top, double-wall insulation to keep beverages hot or cold, and sweet color options: stainless steel, Pearl White, Jet Black and Cotton Candy pink. C-1105



Mad Style can print any of its own artwork on its black-and-white, ceramic-and-metal mugs, or customize the container with a customer's own artwork. C1044



FIRST LOOK vignettes **Capresso H2O** glass rapid-boil kettle boasts durable heat-resistant German SCHOTT glass and a patented stainless steel heating dome for a fast, quiet boil. The cool-touch handle has been ergonomically reshaped for an easier grip. C164

KITCHEN AIDES

BAR CARTS GET THE JOB DONE — EVERYDAY,
AND DOUBLY SO ON SPECIAL DAYS.



Stefania's polished stainless steel tubular frame is wrapped in bonded leather for a dressed up effect; the top and bottom shelves are tempered glass. From **Sunpan**. **B700**



Acrylic embellishments and a 1950s-era French Modern form distinguish **Bungalow 5's** Jepsen gold-leafed steel bar cart. It stands 33 inches high. **C455**



Mirror glass shelves and a gold finish are distinguishing features of **Abbyson Living's** San Remo two-tier bar cart. **B170**

PREP SET

LAS VEGAS MARKET EXHIBITORS MAKE EASY WORK OF KITCHEN PREP, SERVE AND CLEAN.



Assorted melamine and porcelain dishes, Personal drinking bottle and Letters tea towel from Denmark-based **Design Letters** are shown in this styled scene. C1044

FIRST LOOK vignettes

Boldfaced Goods' absorbent Swedish dishcloths riff on pop culture and song titles. The material is a mix of 30 percent cotton and 70 percent wood cellulose harvested from FSC-certified forests. P1-4065



FIRST LOOK vignettes

New **Potluck Press'** tea towels for 2018 include animal, space, astrological, camp and floral motifs, to name just a few. P1-4071



HELP YOURSELF

TABLETOP DEBUTS AT LAS VEGAS MARKET EVOKE THE EASY CHARMS OF ALFRESCO DINING.



FIRST LOOK vignettes Put the shapely Abigail glassware, new for 2018 from **Skyros Designs**, to service both every day and on special occasions. **C101**



Master craftsmanship and soft glaze colors give **Costa Nova's** new **Cristal Collection** its easy charms — and instant heirloom credentials. **C139**

Bodrum's 100 percent linen napkins, complements to the new **Wisteria** and **Napa** collections, are shown in a spring-ready pastel range that includes **Mint**, **Apricot**, **Vanilla** and **Bluebell**, to name a few. **C101**

TOTAL OPPOSITES

RESOURCEFUL, A PANTONE®VIEW HOME + INTERIORS PALETTE FOR 2018, ADVANCES OPPOSITES ON THE COLOR-WHEEL, NAMELY WATERY BLUES AND CORAL-KISSED ORANGES. FIRST LOOK LOOKS TO THE CASUAL FURNISHINGS CATEGORY TO SEE THE PALETTE IN PLAY.



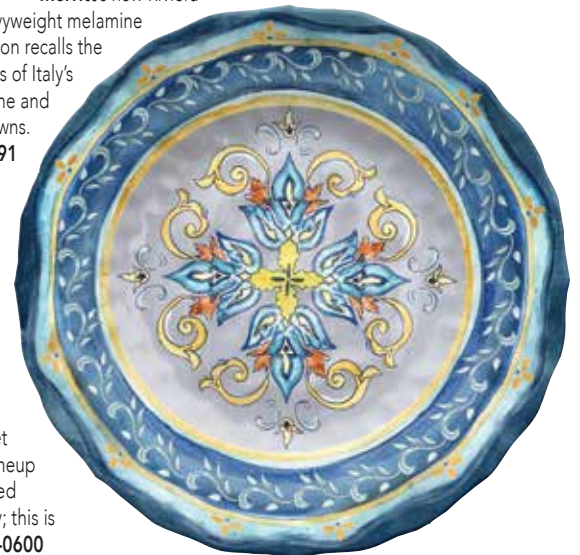
Milan auto-tilt umbrella from **Treasure Garden** loosely draws inspiration from the runways of Europe. The crisp pleated canopy, for instance, is an apparel-esque flourish. **C1215**



The thick interwoven braids on **Ratana Intl.**'s Bogata sectional, lounge chair and ottoman are weather-resistant polyolefin that's wrapped around a foam insert for comfort. **C1235**



Merritt's new Riviera heavyweight melamine collection recalls the colors of Italy's coastline and seaside towns. **C691**



Bizzarto appears at Las Vegas Market this winter with a lineup of European-inspired outdoor upholstery; this is the Vigo sofa. **C13-0600**

COMPANY OF FRIENDS

ALL-WEATHER CONSTRUCTION AND GENEROUS SEAT DEPTH ENCOURAGE GUESTS TO LINGER.



Agio's Aurora Collection takes outdoor entertaining to new heights, whether the backdrop is a Cape Cod or a mountain retreat. Appealing curves frame the all-weather construction for a step-up look. Deep seats are standard; a conversation-height fire pit option is available. **C1295**

GREAT LAKE

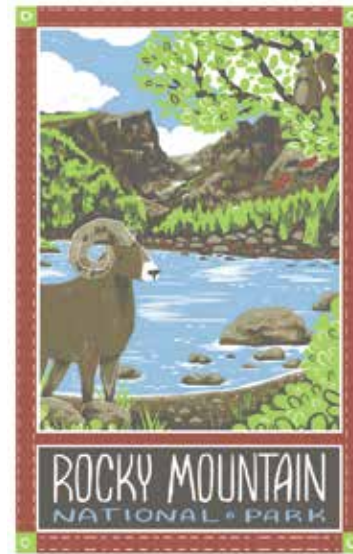
THE UNMISTAKABLE CHARMS OF LAKE LIVING ARE CELEBRATED THIS SEASON IN NEW HOME FURNISHINGS, GIFT-READY HOUSEWARES AND TABLETOP.



Abiamo Tutto's new Canoe watercolor pattern includes dinner plates, mugs, dessert plates, small bowls, tray sets, serving bowls, serving platters, canapé dish sets, pitchers, carafes, a wine bottle/utensil holder, trivets and more. The collection is dishwasher-safe. **C109**



Birchmere coffee table from **Green Gables Furniture** is crafted from 100-year-old reclaimed barn wood; note the waterfall-edge tabletop and the handcrafted Poplar bark columns. Be sure to check out the Tim McClellan HOME Collection this season, too; it's a collaboration with the host of DIY network's new "Boomtown Builder" show. **B125**



FIRST LOOK vignettes

Vestiges kitchen towels feature nostalgic imagery that's printed using water-based inks. Shown: the Grand Teton National Park and the Rocky Mountain National Park designs, both by artist Kelsey King. **P1-2055**

FIRST LOOK vignettes

Chukar Cherries offers flavor profiles for candy connoisseurs who fancy both tart and sweet. Gift-ready packaging is a brand signature; note the new USDA Organic medley, as well as the No Sugar Added dried cherries mix. **C1112GG**





DEMDACO grows its Big Sky Gallery presentation to include artisanal solid wood conversation starters, such as this canoe coffee table by master-artist-in-residence Ken White. **C996**

ART LESSONS

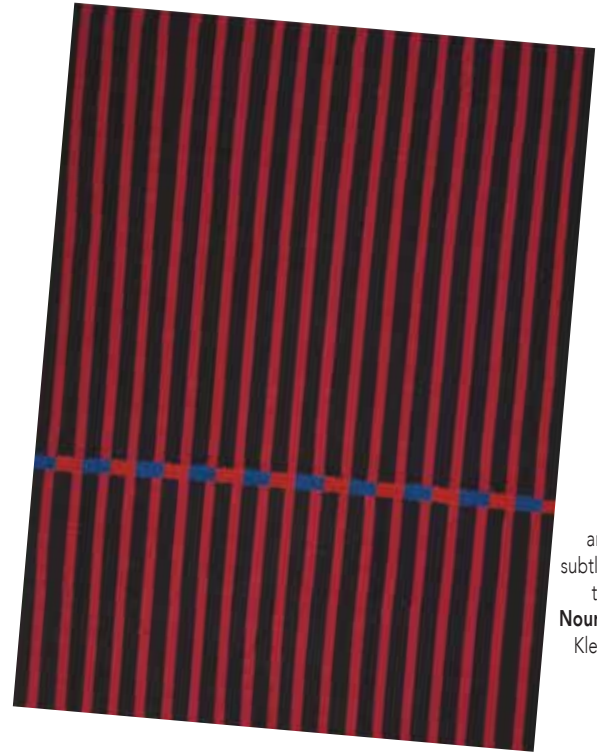
DIGITAL IMAGERY, DE STIJL ARTISTS AND OP ART EFFECTS DELIGHT ON NEW HOME FURNISHINGS.



A nod to Marcel Duchamp's rotating Rotoreliefs prints, **Gold Leaf Design Group's** iron Spinner wall hangings can be presented solo or as a group. Color and size options are Red/Crimson with a 16-inch diameter; Red/Black with a 20-inch diameter; and Blue/Red with a 26-inch diameter. **C502**



An interplay of light and dark finishes, plus a rounded façade, creates a distinct visual effect on the 63-inch-wide Edward buffet from **Home Accents**. **B135**



This striped area rug with a subtle De Stijl-like twist is new to **Noursion's** Calvin Klein Collection. **C112, C123**



"Marilyn" is featured this season in **Artexpo Las Vegas**, an original art showcase that runs concurrent with Las Vegas Market. "Marilyn" is an original acrylic on canvas from Sveta Esser's Pixelism Series; it measures 47 inches wide by 50 inches high. **Pavilion 2**

SUN SPOTS

THE BEACH IS CALLING ... DON'T FORGET THE ESSENTIALS.



Cheers Sunglasses' durable, patented Bottle Opener shades keep the cold ones coming — and provide 100 percent UV protection. **P1-3077**

Fermob's stackable, lightweight Monceau rocker is available in more than 20 anti-UV powder-coated finishes. **C464**



Beach lovers and bookworms alike will enjoy **Girl of All Work's** Beach Day page tags. Each package comes with 375 tags. **P1-4073**

QUIET ROOM

GLOBAL PATTERNS IN NEUTRAL AND PASTEL COLORWAYS
WHISPER "EASY ELEGANCE" AND "SENSE OF PLACE."



Shiraleah presents a compelling, timely interplay of pattern, material and technique, made possible here by hand-blocked rugs, a macramé pillow called Mirabelle, Constantine rectangle pillow, and accents of brass and terra cotta. **C1023, C1024**



The 100 percent wool Torsby area rug, part of the Rize Collection, presents an intricate, lace-like global pattern that suits the modern home. From **Jaipur Living**. **B424**



FIRST LOOK vignettes **Paddywax's** Sonora concrete vessels are etched and painted by hand with markings that recall the American Southwest. Each candle is available in two sizes and topped with a wooden lid. **C1023, C1024**

SPLAY TIME

IN AN OPEN ROOM PLAN, PLATFORM BEDS HOLD UP.

The Addison Collection from **Whittier Wood Furniture** offers up an easygoing combination of solid American alder and black walnut hardwood veneers. The queen bed, complete with its well-engineered splayed leg, is shown. Also pictured: the one-drawer nightstand with cord access; the six-drawer dresser; the 70-inch dresser; and the rectangular mirror. **A909**



TEA IT UP

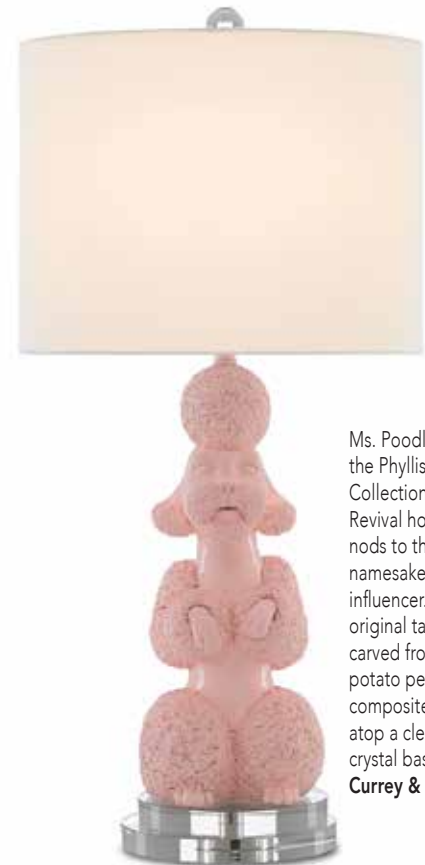
TIME FOR A CUPPA: CHARMING PALETTES AND QUAINOT MOTIFS INSPIRE A FRESH VIEW OF THE TRADITIONAL TEAROOM.



Sophie Allport fine bone china is decorated by hand and finished in Stoke-on-Trent, England. This is the Terrier range, which includes a teapot, mugs, teacups, saucers, plates, bowls and more. **C1039**

FIRST LOOK vignettes

Paddywax pulls out all this stops this season with not-to-be-missed vessels and fragrances, some inspired by earth, wind, fire and water. This is the Celestial group. **C1023, C1024**



Ms. Poodle is from the Phyllis Morris Collection, a Hollywood Revival homage that nods to the line's namesake Mid-Century influencer. Morris' original table lamp was carved from clay with a potato peeler; today's composite base rests atop a clear optic crystal base. From **Currey & Co. C398**

FIRST LOOK vignettes A band of faux fur transforms the ordinary into the extraordinary on this new vase from **burton + BURTON. C844**



FIRST LOOK vignettes Flowers, butterflies, birds and blossoms enchant on Garden Metallic Blush, part of the Chinoiserie by Tempaper Collection of removable wallpaper. Designs in this special order line are scalable to size. **C584**

YEAR OF THE DOG

FIRST LOOK'S YEAR OF THE DOG VIGNETTE, ON DISPLAY IN THE GRAND PLAZA COURTYARD JAN. 28 – FEB. 1, IMAGINES A RESTFUL LOUNGE SPACE WITH MENSWEAR ACCENTS AND A PALETTE THAT RECALLS A SCOTTISH MOOR.



FIRST LOOK vignettes Husky pet bed from TOV Furniture is offered in navy and gray. B658




FIRST LOOK vignettes The five-chair Cruiser Collection from CDI Furniture offers distinct designs named for iconic actors. This is the Bronson, which wears a microfiber cover. B100



Travis coffee table borrows from a Paul McCobb Mid-Century Modern design. This version's frame and legs are solid wood, while the tabletop is top-grade walnut veneer. From Euro Style. B601



FIRST LOOK vignettes Lincoln, a retro-inspired chair for lounge, living and office spaces, is stocked in vintage black, cognac (shown) and blue faux leather, or a beige linen fabric. From Sunpan. B700



The center medallion of Illusion area rug creates a focal point from which blooms of blue and cream radiate. It's power-loomed from viscose yarns for a shimmery effect. Choose from eight sizes. From **Safavieh. A101**

FIRST LOOK
vignettes

Chasing Birds, a peel-and-stick, repositionable wallpaper from **Mitchell Black** is part of the worldly Nomad Collection. Color options are: Warm White, Lavender, Plum and Blues (shown). **C582, C591**



FIRST LOOK
vignettes

Solid ash wood is sculpted to create the distinct body of **Sunpan's** Isla end table. The base is stainless steel or gold, and it's topped with a round tempered glass top. **B700**



FIRST LOOK: Scandinavian styling and storage needs align on Henderson shelf floor lamp from **Adesso Inc. A453**

MAKING A TRANSITION

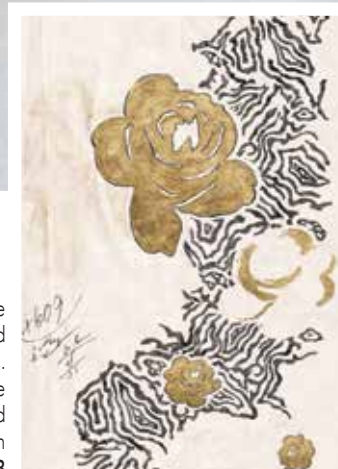
BRASS ACCENTS, INTRICATE FINISHES AND MODERN FORMS
DRESS UP TRANSITIONAL LIVING SPACES.

England Furniture's primer for transitional styling puts forth Cora sofa in Aria linen; Adril pillows in the Coffee colorway; Macy ottoman in a stripe called Idalia; and Natalie chair in Salvador Black Oak leather. **B555**



Votivo employs two new vessels to showcase its best-selling fragrance, Red Currant. Shown: the Gold Onyx black glass container with gold-flecked mercury glass rim. **C853**

Vintage French textiles inspire "Fond D'Ecran en Or — Gold I and II" by Celement Designs. Each 32-inch-by-48-inch giclée on paper has hand-applied gold gild embellishment. From **Celadon Art. C591, C598**



Moroccan-inspired florals grace the handmade low-profile Cosette wool area rug. This is the transitional beige colorway. From **Momeni**. **B425**



The primary light source on **NOVA of California's** Offset table lamp is a 100-watt bulb. The off-center opening, meanwhile, is an LED nightlight. A four-way rotary switch controls both. **A327**



This expressive 17-inch-high brass stool from **Noir Furniture** is intricately carved to mimic a log. The finish is a warm metallic. **C399**



The pattern on **Currey & Company's** Thatcher etched tabletop mimics that of a quaint thatched roof. It wears an antique gold finish; the base is black wrought iron. **C398**



Metallic medley: **Forty West's** curvy Stacy table lamp offers glimpses of bronze, gold, silver and Champagne. **A336**

STORYTELLERS

IN STORYTELLERS, ONE OF FOUR FIRST LOOK VIGNETTES IN THE GRAND PLAZA COURTYARD THIS SEASON, WE CELEBRATE ARTISANS, ENTREPRENEURS AND CREATIVES WHO ARE PROPELLED BY CAUSE, CONVICTION, PASSION AND TRUE GRIT.



FIRST LOOK vignettes **ON A ROLL** Quilling, the ancient art of rolling, coiling and shaping small strips of paper into three-dimensional art, is the specialty of Massachusetts-based **Quilling Card**. In 2018, the company expands beyond greeting cards to include a new line of lightweight paper earrings, the Lainie Collection. The Quilling Card team is made up of more than 300 artists based in Ho Chi Minh City, Vietnam, who handcraft each design. In 2015, Quilling Card became a certified member of the Fair Trade Federation. Many of the company's employees have had limited employment opportunities and access to sustainable wages; as Quilling Card employees, they receive wages that are 20 percent to 25 percent above the national average. **C10-109**

FIRST LOOK vignettes **FOLLOW THE SIGNS** Girl works in marketing for 15 years; travels the world. Girl falls in love. Girl leaves corporate world to attend art school. Girls launches business in 2011. Meet Kristen Bangs, founder of Spunky Fluff, a Denver-based workshop that offers custom wall décor that's "cheeky, cheery and made in the USA." Example: This is "How Sweet it is to be loved by you" wall sign, which is cut from carpenter-grade birch plywood. Each sign is handpainted; choose from two widths: 17.5 inches and 23.65 inches. **C1106**





FIRST LOOK vignettes **MOSS IS BOSS** Icelandic moss grows abundantly on the lava slopes, lush plains and pristine mountainous regions of Iceland. Personal care brand **Kalastyle** harnesses the power of this lichen to soothe and protect the skin with its new **Hallo Sapa™ Moss soap**. In addition to the hand-harvested moss, this line mixes in an antioxidant-rich sage essential oil along with Kalastyle's sustainable soap base. **C1023, C1024**

FIRST LOOK vignettes

PERUVIAN PASSION

As a member of the Alliance for Artisan Enterprise, **Arcadia Home** is committed to the preservation of traditional arts and techniques; providing steady employment for artisans around the world, especially women; and fostering economically viable conditions for the practice of craft. To wit, each one-of-a-kind reverse-painted mirror box from Arcadia Home is meticulously decorated by hand using a technique that's been practiced in Peru since the 16th Century. **C10-106**



FIRST LOOK vignettes **CARDS FOR A CAUSE** The artists who make **Good Paper** cards are as estimable as the materials they use (recycled office paper), their process (all crafted by hand), and their designs (clever, cute and heart-warming). They are either women who have escaped sex trafficking in the Philippines or young adults in Rwanda who have been orphaned by disease. Suitably, Good Paper is a member of the Fair Trade Federation; as such, the San Francisco-based company employs more than 160 card makers who are paid between 30 percent and 50 percent more than the local average wage. Grumpy Kitty Birthday, Hot Chick Birthday and Grow Old With You designs are shown. **P1-2001**

STORYTELLERS *continued*



FIRST LOOK vignettes **BLEEPITY BLEEP!** For **Badass Babe** founder Jen Mayrand, the F*ck Nut necklace "is a socio-political statement in four letters." The four letters are hand-stamped by the Montana-based business' artisans on a pewter nut that's handcast in the United States. "No one but you will know exactly how you feel," Mayrand says, who launched her business by repurposing spent ammunition casings. "Like your mother said – if you don't have anything nice to say, don't say anything at all. At least out loud." **P3-9406**

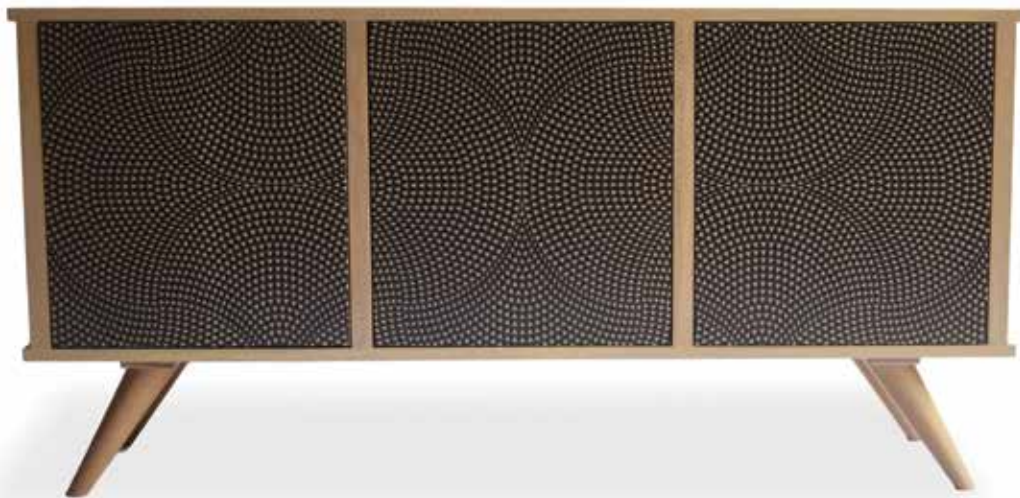


FIRST LOOK vignettes **CREATIVE ABANDON** Founded in 2003 by mother-and-daughter team Gina and Anahata Katkin, **PAPAYA!** continues to uphold two founding principles: first, artists are the heart that drives the company; second, keep creative abandon alive and thriving. Based in Southern Oregon, all of PAPAAYA!'s lines feature original artwork by Anahata and a small team of dedicated in-house designers. This is the new Jewel Flower blank greeting card. It's printed on recycled paper, embellished with gold-foil details and comes individually sleeved with a screen-printed kraft paper envelope. **C1063**



THAT'S A WRAP

WorldFinds' jewelry is handmade by female artisans in India who work to improve their lives through fair trade. Using recycled kantha textiles, they create beads that line up to form statement-making accessories. This is the Kantha triple-layer tassel necklace — each varies in color and pattern. Brightly colored threaded tassels add an extra pop. **P1-1033**



FIRST LOOK vignettes **SAVE & PRINT** Long-time friends Bridgette Hamilton and Cindy Gross fused their love of art and furniture for the 2015 launch of their Annapolis, MD-based company, 1429 mfg. "Infusing virtually any artwork with solid wood furniture became an obsession," the duo explains. Today, all 1429 mfg. furniture, which features digitally printed patterns, is made in the United States by a select group of artisans. Shown here: Payton console in the Remi pattern. **P2-5002**

FIRST LOOK vignettes **GRAND SANDING** One would be hard-pressed not to fall under the spell of KB Collection Sand Art's kinetic sand sculptures. How do they work? Each vessel is filled with upwards of six minerals, such as sand and crushed quartz. Because each material's weight varies, they never fully mix when suspended in water. The result is sedimentary sculptures that hypnotically form unique layers of mountains and valleys every time the glass vessel is flipped. Recently showcased in Louis Vuitton retail displays, KB Collection Sand Art's designs are available through the **Pitkin Stearns** brand in a variety of frame types, sizes and prices. Shown here: Black Landscape. **P2-5055**



FIRST LOOK vignettes **GUY GROOMING** Personal care products ace Joe Moore launched the **Olivina** brand because he believed men deserve more: "Men should have access to body care that is artful and sophisticated ... so what's available out there that meets this criteria? My own search yielded a disappointing lack of clean, natural and organic options." So began Olivina, a line characterized by simple, time-honored ingredients. "We believe everything we need to take care of our bodies is growing all around us," Moore continues. "And after dedicating our efforts to sourcing healthful natural ingredients, everything else followed suit." Enter the all-day Hydrating Body Moisturizer, a lightweight, olive oil-based lotion, in the Bourbon Cedar fragrance. **C1023, C1024**

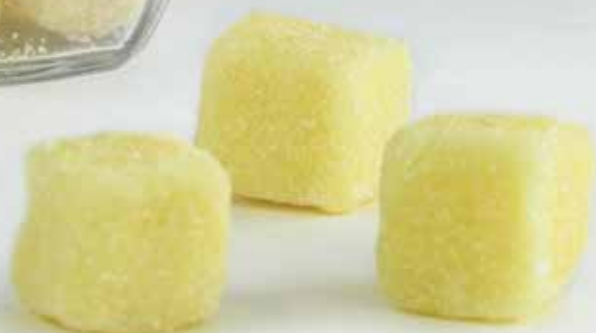


H₂Oh!

AT-HOME RELAXATION BURSTS WITH NATURAL INGREDIENTS, INVIGORATING FRAGRANCE AND CLEANSING AND MOISTURIZING POWER.



Harper + Ari's exfoliating sugar cubes gently scrub, cleanse and, because they have shea butter and aloe, moisturize the skin. C1023, C1024



FIRST LOOK vignettes Yuzu Soap's bath bomb cubes, each rich in moisturizing coconut oil, aromatic essential oils and natural clay, are handcrafted in small batches. A boxed set contains two individually wrapped cubes. P1-2002



Like all Hydra products, the company's Chill Pills are made by hand in the United States using natural ingredients and 100 percent pure essential oils. C1078, C1080, C1090

TO THE MAX

JEWEL HUES FIRE UP A MAXIMALIST VIBE.



"Summer Song #1" by Liz Barber, a 48-inch-by-48-inch mixed media on canvas, is part of **Artexpo Las Vegas**, a fine art showcase that runs concurrent with Las Vegas Market. **Pavilion 2**



FIRST LOOK vignettes New Pacific Direct's fantastic Perla tables with glass tops are offered in teal and fuchsia. **A654**



Nourison expands both its Prism and Twilight collections this winter; this wool-blend, blue-and-gray abstract is part of the former. **C112, C123**



Like other pieces in the Lenny Collection from **Bauhaus Furniture Group**, XL sofa has a low-profile track arm and metal flange legs. It measures 97.5 inches wide and 41.5 inches deep. **A726**

RELAXED FIT

HAND-BLOCKED PRINTS AND CALMING BLUES ARE A CINCH IN THE HOME AND ON THE BODY.



Classic medallions repeat in a casual colorway on **Jaipur Living's** Reign hand-knotted area rug. **B424**



FIRST LOOK vignettes Hand-blocked bags from **Art Studio Company** are made from high-end upholstery fabric and printed using organic dyes. (A portion of sales of each fabric-lined tote supports Global Dental Relief, which provides dental care for children worldwide.) **C1191**

DEMDACO's fashion and jewelry introductions for 2018 include leggings-friendly dusters and drapes that cover up trouble spots for looks that are confident and au courant. **C996**

LADIES CHOICE

HOSTESS GIFT, BIRTHDAY PRESENT, STOCKING STUFFER ... NAME THE OCCASION, AND LAS VEGAS MARKET TENANTS SERVE UP A GIFT WORTH GIVING.



Willowbrook's She Believed sachet promotes empowerment by way of a complex fragrance that combines peony, pine, orchid and passion fruit. Sachets are printed on recycled paper and contain biodegradable ingredients. **C853**



8 Oak Lane offers "insta-worthy" accessories, gifts and party planning solutions, including this new gold-rimmed unicorn tray. **C1039**



Graphique de France has expanded its Deluxe Collection to include designs such as this 7-inch-high-by-5-inch-wide ceramic trinket tray. Also shown: a new Neon keychain. **C1012**



Lucky Feather follows up its state necklaces with new State Love 14K gold-plated studs. Each card has a saying that represents its state's vibe. **C1023, C1024**

New trinket dishes and serving trays from **Lucy Lu** feature brightly colored Art Deco-esque imagery. **C1023, C1024**



TASTY CONFECTIONS

LATHER UP WITH ARTISAN SOAPS MADE FROM GOOD-FOR-YOU INGREDIENTS. SWEET!



FIRST LOOK: Under the direction of **vignettes** of cake-decorator-turned-soap-maker Ashley Robertson, **FinchBerry** soaps are crafted from food-grade ingredients, contain no harsh chemical preservatives, and are vegan and gluten-free. Robertson founded the FinchBerry brand in 2009; today, the line is in more than 3,500 retail locations. **C1023, C1024**

NOTES TO SELF

JOT THIS DOWN: SHOP THE LATEST MOTIFS IN STATIONERY AT LAS VEGAS MARKET.



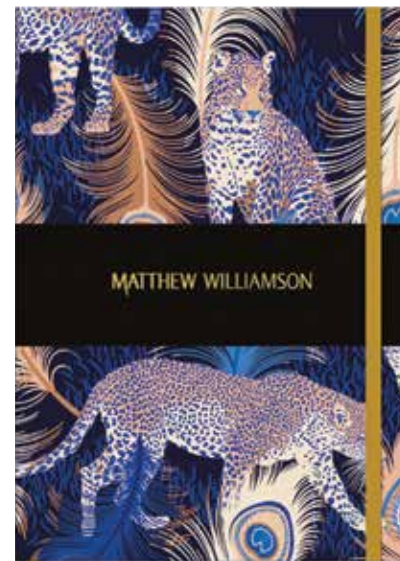
Compendium's 128-page lined cat journals are printed with soy ink on FSC-certified paper. **C1023, C1024**



Transition from winter to spring by way of **Waste Not Paper's** new Greenery Collection, which includes a mug, a travel pouch, stationery and a notebook. **C1023, C1024**

FIRST LOOK vignettes

Roger La Borde's Odd Dog Out 80-page journals measure 4 inches by 6 inches. Sold as a set of three. **C1040**



Leopards is new from **Notes & Queries Inc.'s** Matthew Williamson deluxe journal line. Captivating blues, neutral tones and a stately black background distinguish this 5-inch-by-7-inch design. **P1-4076**



Santoro's new embellished A5 notebook is graced with hummingbirds in Sunlit Yellow, Emerald Green and Midnight Blue. Delicate copper-foiled butterflies join in the scene, and rose gold-foiled edges are the finishing touch. **P1-4062**

CEU EVENTS

The following CEU-accredited seminars have been approved by the Interior Design Continuing Education Council (IDCEC) and are recognized by the American Society of Interior Designers (ASID), Interior Designers of Canada (IDC) and the International Interior Design Association (IIDA). Verification cards are available in seminar rooms. Times and seminar locations are subject to change; check Las Vegas Market directories for complete event descriptions.

SUNDAY, JAN. 28

Artexpo: On the Horizon in the Art World
10 a.m. – 11 a.m. • Pavilion 2 Seminar Room
Join Yubal Marquez Feites, Arte Collective; Ruth-Ann Thorn, Empress Collections Galleries; Jen Tough, Jen Tough Gallery and Opus Art Collective; and moderator Linda Mariano. 0.1 CEU

Artexpo: Marketing Smarts For Designers and Gallery Owners
11 a.m. – Noon • Pavilion 2 Seminar Room
Litsa Spanos, Art Design Consultants, guides attendees. 0.1 CEU

Artexpo: Gallery Success Stories: How to Succeed with Brick & Mortar
Noon – 1 p.m. • Pavilion 2 Seminar Room
Gain insights from Ruth-Ann Thorn, Empress Collections Galleries; Rick Barnett, Redwood Media Group; and Eric Smith, Artexpo/Redwood Media Group. 0.1 CEU

Artexpo: Dream to Launch - Making the Internet Work For You
1 p.m. – 2 p.m. • Pavilion 2 Seminar Room
Join A.D. Cook as he takes you on a journey from napkin sketch to meaningful online presence. 0.1 CEU

Designing for Small Spaces is a Big Deal
1 p.m. – 2 p.m. • Building C Seminar Room, C174
Christopher Grubb, Arch-Interiors Design Group Inc., will discuss market trends and techniques that maximize smaller living spaces. 0.1 CEU

Artexpo: 60 Tips in 60 Minutes
2 p.m. – 3 p.m. • Pavilion 2 Seminar Room
Join Litsa Spanos, Art Design Consultants; Jeff Casner, Homtex; Eugene Korchinski, Anna Art Publishing; Dorothy Willetts, Willetts Design; and Eric Smith, Artexpo/Redwood Media Group. 0.1 CEU

Outdoor on the Rise: Casual Living's 2018 Universe Study
2 p.m. – 3 p.m. • Casual Furniture Seminar Room, C1276
Editor-in-Chief Waynette Goodson presents findings from a comprehensive assessment of the outdoor industry. 0.1 CEU

Artexpo: Start With The Art
3 p.m. – 4 p.m. • Pavilion 2 Seminar Room
Get a start in fine art with Eric Smith, Artexpo/Redwood Media Group; Andrea Wexler, Pippin Contemporary; Kris and Angela Gebhardt, Gebhardt Gallery; Dorothy Willetts, Willetts Design; and moderator Linda Mariano. 0.1 CEU

Moving Your Brand into the Next Level of Partnerships and Product Licensing
4 p.m. – 5 p.m. • Building C Seminar Room, C174
Join Mayer Rus, Architectural Digest, and interior designer Michelle Workman for a timely discussion. 0.1 CEU

MONDAY, JAN. 29

FIRST LOOK - 2018
10 a.m. – 11 a.m. • Building B, WorldView on Sixteen
Brush up on Las Vegas Market product debuts with editor Julie Smith Vincenti. 0.1 CEU

Using Buy Local Campaigns to Build Business
11:30 a.m. – 12:30 p.m. • Pavilion 2 Seminar Room
Join Carol L. Schroeder, author of Specialty Shop Retailing: How You Can Succeed in Today's Market, for a timely discussion. 0.1 CEU

Inside the Mind of Jeff Lewis
1p.m. - 2 p.m. • Building B, WorldView on Sixteen
Hear Jeff Lewis share insight from his extensive and successful career in design and business. Sponsored by Alder & Tweed Furniture and IMC. 0.1 CEU

Vintage Style for Modern Living
1:30 p.m. – 2:30 p.m. • Pavilions 2 Seminar Room
Cathy Robinson Hutton, Renovate Houston; Matt White, Recycling the Past; and moderators Katie Stavinoha and Lorie Woodward share tips. With Round Top Texas life & style magazine. 0.1 CEU

Architecture & Design: A Hand-in-Hand Approach
1:30 p.m. – 2:30 p.m. • Building C Seminar Room, C174
Christopher Grubb, Arch-Interiors Design Group Inc.; Christopher Mercier, (fer) studio; and Adam Sebastian, Stitch Design Shop, discuss top trends. 0.1 CEU

Best of the West in Life & Style
3 p.m. – 4:30 p.m. • Building B, WorldView on Sixteen
Join REstyleSOURCE and moderator Ryan Saghian, as panelists discuss West Coast "life and style." Meet Audrey Woollen, Urbanic Paper Boutique; Olivia Korenberg and Jenn Pablo, Two Fold LA; stylist and producer Heather Bullard; Ginny Macdonald, Emily Henderson Design; and Kelly Nutt, Kelly Nutt Design. 0.15 CEU

TUESDAY, JAN. 30

Artexpo: Art Talk - Meet the Successful Artists of Today
10 a.m. – 11 a.m. • Pavilion 2 Seminar Room
Explore the careers of Walter Redondo, Mary Johnston and Jeffrey Bisailon. Linda Mariano moderates. 0.1 CEU

Casual Living Panel Discussion: The Business of Outdoor Design
11:30 a.m. – 12:30 p.m. • Casual Furniture Seminar Room, C1276
Waynette Goodson leads a panel discussion with interior designers Thom Filicia, Barry Livingstone and Lori Paranjape, and Seasonal Living's Gary Pettitt. 0.1 CEU

Meet the Makers – RSVP-Required Lunch Seminar
Noon – 1:30 p.m. • Pavilion 2 Seminar Room
Get to know Kura Perkins and Bree Hay Hendry, Art Hide and Amigos de Hoy; Diane Sulg, CRAFT president and American Craft Week founder; and Carol MacNulty, Aid to Artisans consultant. Sam Ujvary, GIFT SHOP Magazine, moderates. 0.15 CEU

Pantone Presents Inspiring and Expressing Color: Defining the Essential Color Trends for Home in 2018
1 p.m. – 2 p.m. • Building B, WorldView on Sixteen
Patti Carpenter, Pantone Color Institute trend team contributor, navigates 2018 color palettes. 0.1 CEU

Taking Stock of Retail: Critical Trend Insights
2 p.m. – 3 p.m. • Building C Seminar Room C174
Trends forecaster Michelle Lamb makes the case for retail reconnaissance. 0.1 CEU

Design Desires - What The Consumer Really Wants!
2:30 p.m. – 3:30 p.m. • Pavilion 2 Seminar Room
Angela Harris, TRIO Environments, will discuss consumers' wants and needs for their homes. 0.1 CEU

2018 Design Icon Presentation and Award Ceremony with Frank Gehry
3 p.m. – 4 p.m. • Building B, WorldView on Sixteen
Renowned architect Frank Gehry is the 2018 Design Icon. In an exclusive interview with International Market Centers' Robert Maricich, Gehry discusses his oeuvre. 0.1 CEU

WEDNESDAY, JAN. 31

Mid-Century and Modern Design – Designing For Today
11 a.m. - Noon • Building C Seminar Room, C714
Christopher Mercier, (fer) studio, will compare Mid-Century and present-day homes. 0.1 CEU

2017 Color & Design Trends for Hospitality, Retail, & Office Interiors
1 p.m. – 2 p.m. • Building C Seminar Room, C174
Maria Oliveira, PPG Architectural Coatings, navigates the PPG Commercial Forecast. 0.1 CEU & 0.1 AIA