



LiveSmart

ENJOY LIFE, STAY SPOTLESS  
byCULP

DECEMBER 2018





Whether it's dirty little hands, muddy paws, or a spilled glass of wine, life's everyday messes happen. LiveSmart fabrics resist the stains made by these everyday accidents. With their moisture repellency and stain resistance, LiveSmart fabrics keep your furniture looking and feeling as beautiful as the day you bought it.

LiveSmart is:

Moisture repellent

Stain resistant

Designed for heavy duty wear

Barrier protection to keep your fabric clean

LiveSmart technology combines a performance fiber with a performance finish to give our fabrics inherent durability and longevity. Spills bead up, sitting on top of fabric until they are gently blotted with a cloth for cleanup. From pets to kids, LiveSmart fabrics can handle whatever your life throws at them.

## Live Life Smart with LiveSmart Fabrics

Whether it's dirty little hands, muddy paws, or a spilled glass of wine, life's everyday messes happen. LiveSmart fabrics resist the stains made by these everyday accidents. With their moisture repellency and stain resistance, LiveSmart fabrics keep your furniture looking and feeling as beautiful as the day you bought it.

LiveSmart fabrics are produced exclusively with low denier performance yarns that are encapsulated with a stain and moisture repellent finish. Spills bead up on the surface of the fabric instead of penetrating into the cushion. With their unsurpassed cleanability, LiveSmart fabrics let you relax. LiveSmart by Culp is an array of coordinated fabrics and colors that are designed to look as good as they perform!

### LIVSMART IS:



Moisture  
Repellent



Stain  
Resistant



Easily  
Cleaned



No Harmful  
Chemicals



No After-Market  
Treatments Required



Value  
Priced

From pets to kids, LiveSmart fabrics can  
handle whatever your life throws at them.

## CARE & CLEANING METHODS

All spills should be treated promptly for best results and ease of removal.  
Most spills can be cleaned by gently lifting the spill with a paper towel,  
or a clean, dry, absorbent cloth.

The use of a paper towel, or clean, dry, absorbent cloth alone may not completely remove the spill.  
For further treatment, these guidelines are suggested for best results.



### LIQUID SPILLS

STAINS, WINE, COFFEE, MILK, BLOOD, SODA,  
BEER, URINE, TEA, JUICES, KOOL AID



### NON-LIQUID SPILLS

KETCHUP, ICE CREAM, CHOCOLATE SYRUP/CHOCOLATE,  
SALSA, JELLY, CRAYOLA MAGIC MARKER, DIRT/MUD

\* The removal of dried non-liquid spills may require the use  
of a soft brush or butter knife on the affected area before  
following with wet treatment.



### MIX

Use a water based soap mixture  
that combines 1 tablespoon of a  
liquid detergent such as Tide with  
16 ounces of lukewarm water.



### BLOT

Dampen the cleaning cloth in  
the mixture and gently blot the  
soiled area. Avoid rubbing the  
affected area aggressively.



### RINSE

Rinse the area with a clean,  
damp cloth to ensure that all  
of the soap residue has  
been removed.

Note that pile fabrics may require that the entire panel be cleaned in a seam to seam fashion in order to restore the overall  
appearance of the fabric. Excessive spills may require a consultation with a professional upholstery cleaning company.

For a more information, please contact us at  
[livesmartbyculp.com/contact](http://livesmartbyculp.com/contact)



# TECHNICAL SPECIFICATIONS

Polyester and polyester blends for seating in residential, hospitality, and office complexes.

## PERFORMANCE PROPERTIES



### MOISTURE REPELLENCY

- Spray Rating of 80-100 (AATCC Test Method 22-2010)



### STAIN RESISTANCE

- Class 4-5 (AATCC Test Method 130-2010 modified)\*
- Ease of cleaning utilizing various cleaning products

\* Common household stains such as wine, coffee, ketchup, chocolate syrup, etc.

\* For most products

For a complete listing, please contact us at  
[livesmartbyculp.com/contact](http://livesmartbyculp.com/contact)

## FABRIC TYPES

### WOVEN TEXTURES

Plain, Satin, Jacquard, Dobby

### KNITS

### WOVEN VELVETS

### PRINTED

## Environmental Impact

- Does not contain PFOS (perfluorooctane sulfonate) or PFOA (perfluorooctanoic acid)
- No Proposition 65 chemicals present
- No REACH listed chemicals (Substances of Very High Concern)
- No EPA regulated Section 313 chemicals present
- Low VOC's (Volatile Organic Compounds)
- No formaldehyde, phthalates, heavy metals, bisphenol BPA, or dioxin
- No Halogenated Flame Retardants (i.e. PBDEs)
- PVC free

## Physical Property Performance

FLAMMABILITY	TB 117-2013 Pass, UFAC Class 1
SEAM SLIPPAGE	ASTM D4034- 25 lbs. minimum
SEAM BREAKING STRENGTH	ASTM D4034- 50 lbs. minimum
TENSILE STRENGTH	ASTM D5034- 50 lbs. minimum
TEAR STRENGTH	ASTM D2261- 6 lbs. minimum
ABRASION	ASTM D4157 modified- Heavy Duty 15,000 double rubs*
COLORFASTNESS TO CROCKING	AATCC 8, Dry - Class 4 minimum, Wet - Class 3 minimum
COLORFASTNESS TO LIGHT	AATCC 16- Class 4 @ 40 hours exposure

## QUESTION & ANSWER

### What is LiveSmart?

LiveSmart is a high performance indoor fabric for furniture, designed to repel both liquid and non-liquid stains. Combining unique performance yarn systems with a superior performance finish, LiveSmart is the ultimate, super-value performance story for modern living. LiveSmart offers barrier protection through our completely encapsulated performance fibers, and is the perfect option in home performance fabric. Moisture can stay on the surface of LiveSmart fabric without penetration or staining, giving ample time for clean-up. Offered in a variety of colors and patterns, LiveSmart is a logical fabric choice for every home.

### Is LiveSmart Safe?

Yes. LiveSmart fabric is safe for pets, children and everyone else in the family! LiveSmart uses the same technology as is currently being used on water repellent outerwear you can buy today. In the apparel industry it is referred to as DWR, Durable Water Resistance. If it is safe enough for you to wear – it is safe enough to sit on.

### Why is LiveSmart the best choice?

LiveSmart offers the benefit of complete fabric and furniture protection. It is a dual-performance story, combining high-performance fibers and high-performance yarns along with water repellent technology. LiveSmart fabrics are not only soft to the touch but impervious to the everyday mishaps of a modern active life (like wine spills, muddy pets and kids' chocolate-covered handprints).

### Can LiveSmart be added to any fabric?

No. This is a dual-performance story that combines performance fibers, yarns and water repellent technology. We carefully engineer these fabrics to maximize performance characteristics.

### Are LiveSmart fabrics breathable?

Yes! Even though water does not penetrate the surface, LiveSmart fabrics are completely breathable! How? The unique finishing technology we use causes surface tension on the face of the fabric that repels liquid but allows air to pass through freely.

### Which fabrics will work with LiveSmart?

LiveSmart works on a wide variety of the most popular upholstery fabrics. At present, we offer woven textures, velvets, chenilles, leather looks and jacquards.

### How do you maintain LiveSmart fabric?

Clean LiveSmart fabric as you would most fabrics. Mop up spills with a paper or cotton towel. Use mild soap and water when necessary to completely clean more solid spills. Please visit our website at [livesmartbyculp.com](http://livesmartbyculp.com) and click Resources to locate detailed cleaning instructions.

### How does LiveSmart affect the hand of the fabric?

LiveSmart fabrics not only perform, but are soft and pleasing to the touch.

### How long does LiveSmart protection last?

LiveSmart fabrics are guaranteed with a 3 Year Limited Warranty against stains.

### Is there an aftermarket version of LiveSmart and does my fabric need to be re-treated?

Because LiveSmart is a dual performance story, it eliminates the need for after-market treatment. Since the protection is within the fibers of the fabric, LiveSmart protection is intrinsic and never needs to be re-applied. With proper care, LiveSmart fabric can last until you're ready to switch out your furniture pieces years from now!

### Where can I find LiveSmart Fabric?

LiveSmart by Culp is available at a variety of fine furniture and home retailers, including Macy's, RC Willey, Pier 1 Imports®, and more. Please visit our website at [livesmartbyculp.com](http://livesmartbyculp.com) and click Where to Find to locate a retailer near you.

### Does LiveSmart need to be cleaned with bleach?

No! The need to use bleach on an indoor fabric suggests that the fabric is not easily cleaned. Since LiveSmart is so easily cleaned, just use a paper or cotton towel for liquid spills. Clean with a mild soap and water for any non-liquid spills.

**Enjoy life. Stay spotless.**



# LIVSMART PATTERNS







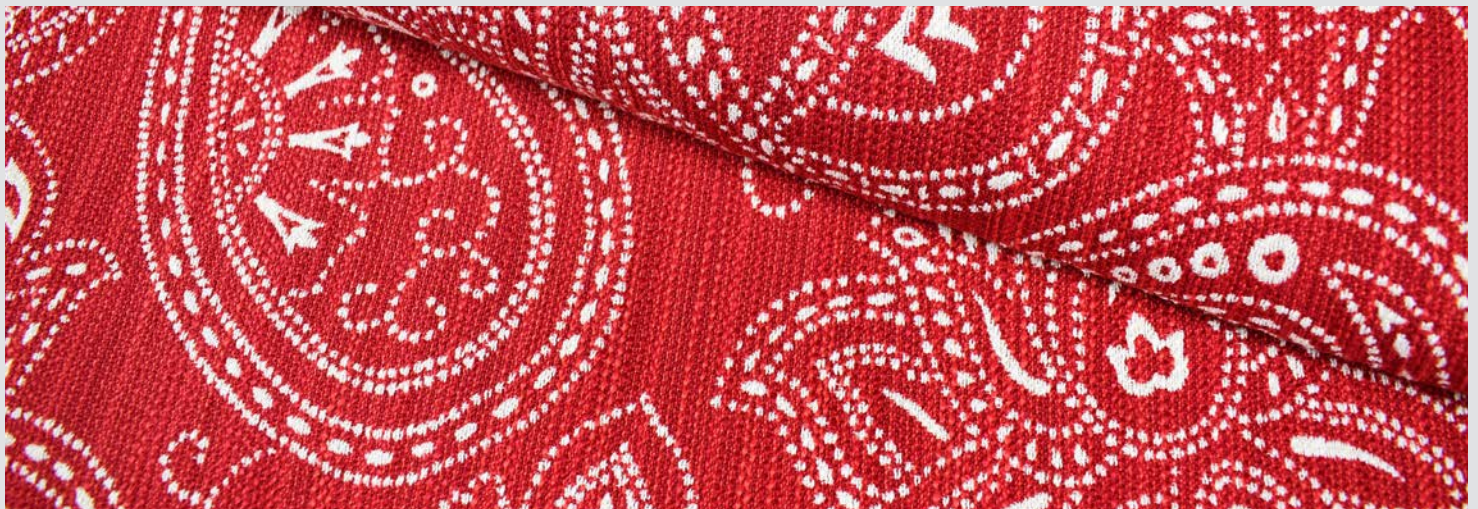
Ebony



Lime



Marine



Scarlet



Sandstone

ALAMEDA



Tangelo



# ALISO



Cabana



Breeze



Classic



Fiesta



Garden





Blossom



Classic



Daisy

ALPENROSE



Fiesta





Lime



Sandstone



Tangelo

ANNISTON



Marine





Atlantic

ANTONIO



Charcoal



Chiffon



Jade



Cypress



Dove



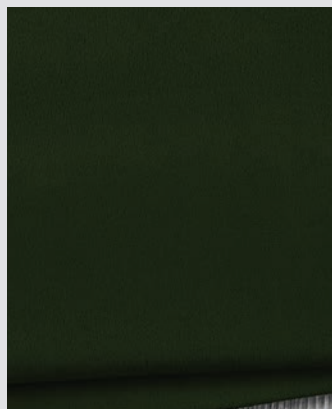
Fern



Goldenrod



Granite



Hemlock



Ivy



Juniper





Linen

ANTONIO



Merlot



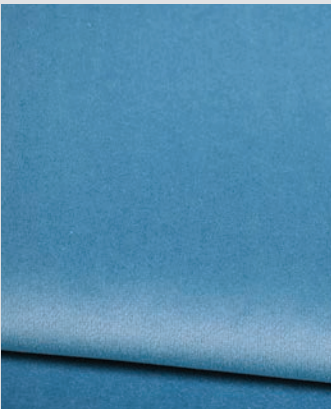
Midnight



Mist



Persimmon



Pool



Porcelain



Raspberry



Sapphire



Sisal



Sprout



Wheat





Auburn



Cinder



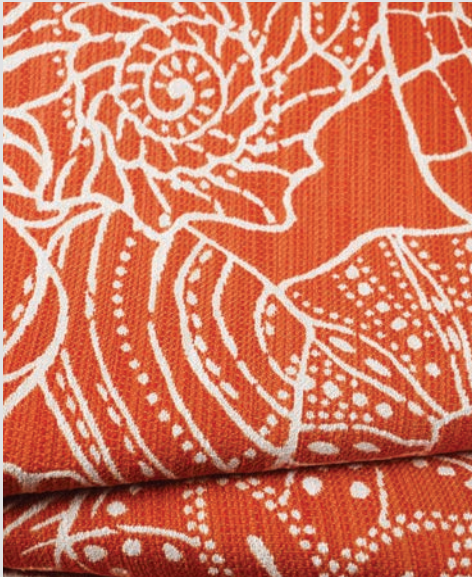
Tropic

# ARCADIA



Fuchsia





Coral



Dove



Evergreen

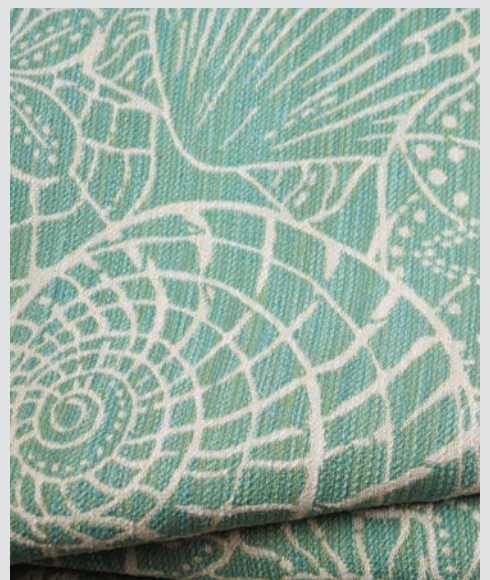


Sea Breeze



Taupe

ATLANTIS



Tropic



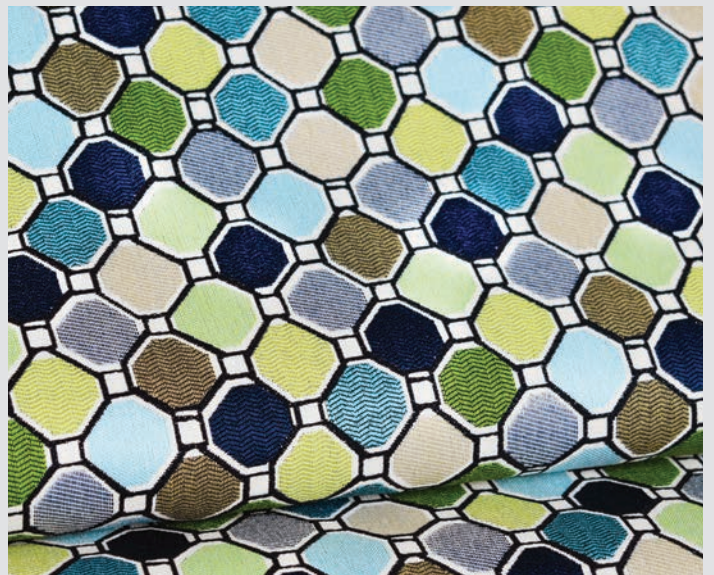
# BADABING



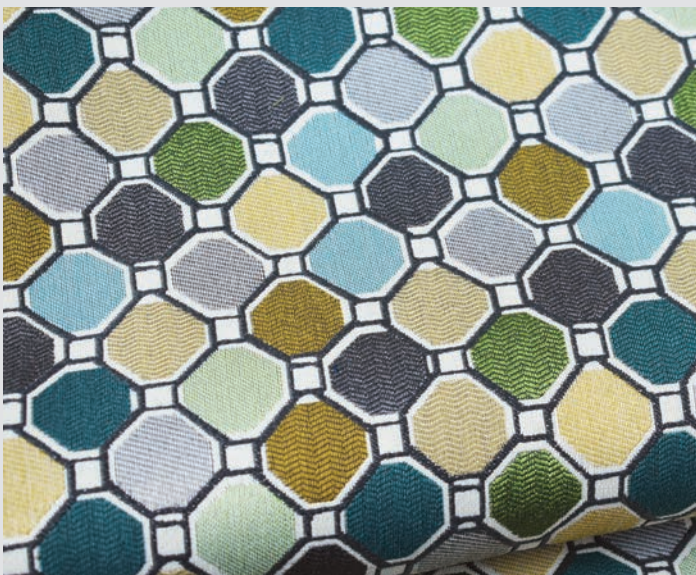
Pottery



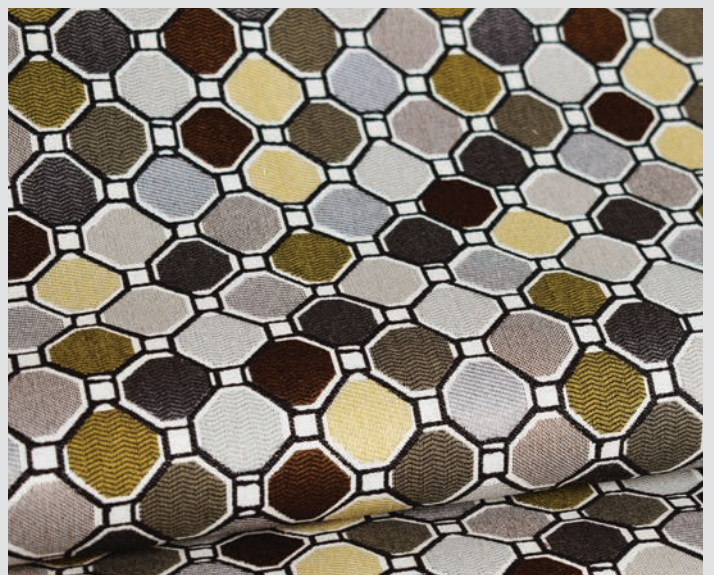
Brownstone



Jewel



Meadow



Mineral





Azure



Carob



Coffee



Dove



Light Grey



Spa



Linen

BENAVENTO



Stone



Wheat



# BIANCO



Quartz



Coral



Mineral



Saffron



Seaspray





Celebration



Flashdance



Midnight

# BLOCK PARTY



Serenity





Admiral



Army



Canvas



Charcoal



Chocolate



Frost



Pebble



Sangria



Smoke



Wicker



Silver





Juniper



Kiwi



Linen

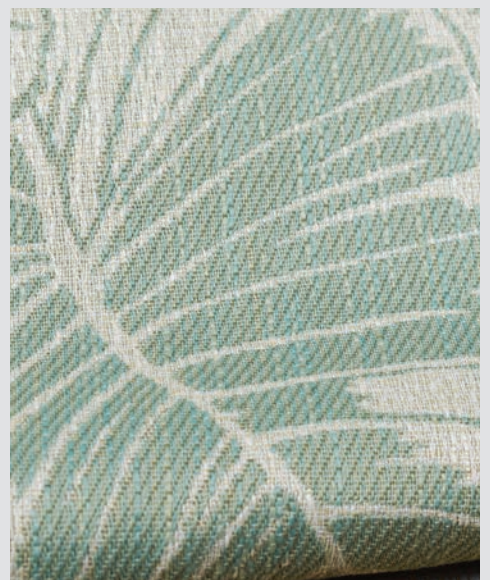


Palm



Melon

CALIDORA



Seafoam





Biscotti



Bisque



Coastal



Walnut



Dove



Elk



Heather



Honey



Ivory



Spice



Storm



Wine





Classic



Hemlock



Waterlily

## CONTOUR



Mimosa



# CORVARA



Smoke



Persimmon



Sapphire



Slate



Tropic

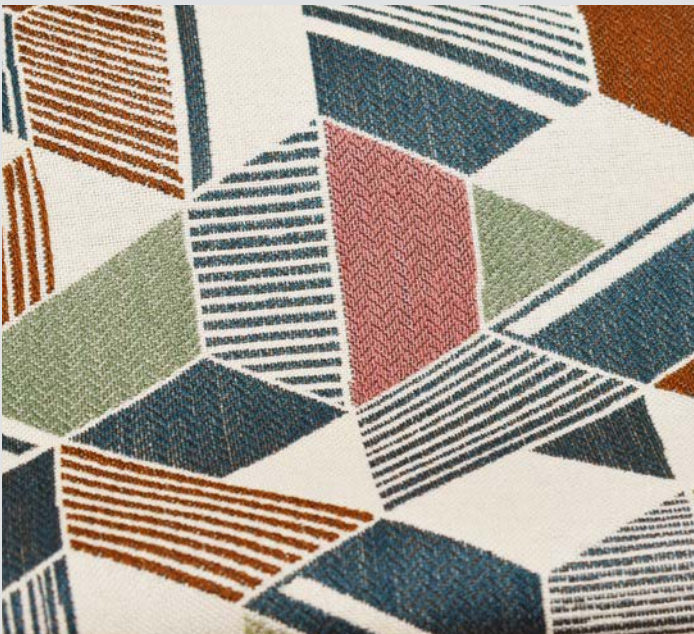




Espresso



Moroccan



Succulent

DOMANI



Forest





Bark



Brindle



Bronze



Coffee



Muslin

DOVER



Flax



Fog



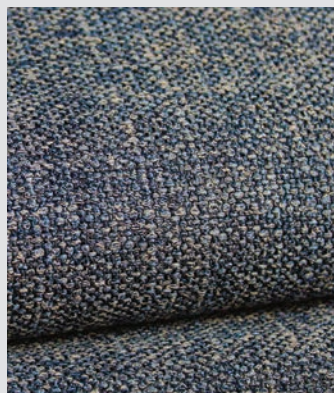
Ivory



Jade



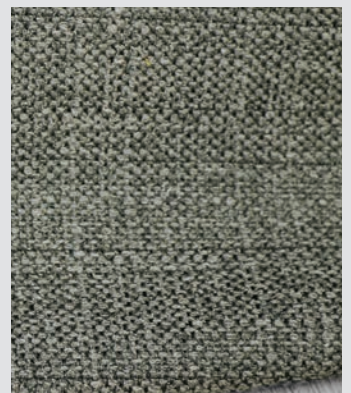
Natural



Navy



Pear



Stone



# EMILIANO



Oasis



Ember



Harvest



Mandarin



Marigold



# EMMIE



Autumn



Bermuda



Evergreen



Hunter



Peppercorn





Ebony



Lime



Marine



Scarlet



Sandstone

ERINA



Tangelo



# ESTEE

---



Auburn



Tropic



Forest



# FINE LINE



Urban



Carnival



Industrial



Jungle



Sahara



# FITCH



Heather



Charcoal



Ice



Ochre



Storm





Capri



Sandstone



Tango

# FIXATION



Confetti





Bark



Bisque



Celery



Charcoal



Cotton



Fudge



Hemp



Hibiscus



Grain

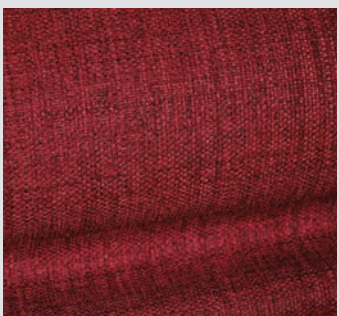


Lime

FLANIGAN



Maui



Merlot



Midnight



Tangelo



Tidewater



# FLIPPED



Meadow



Carnival



Confetti



Retro



Taupe





Bark



Denim



Sand



Stone



Taupe



Snow



Turquoise



Umber





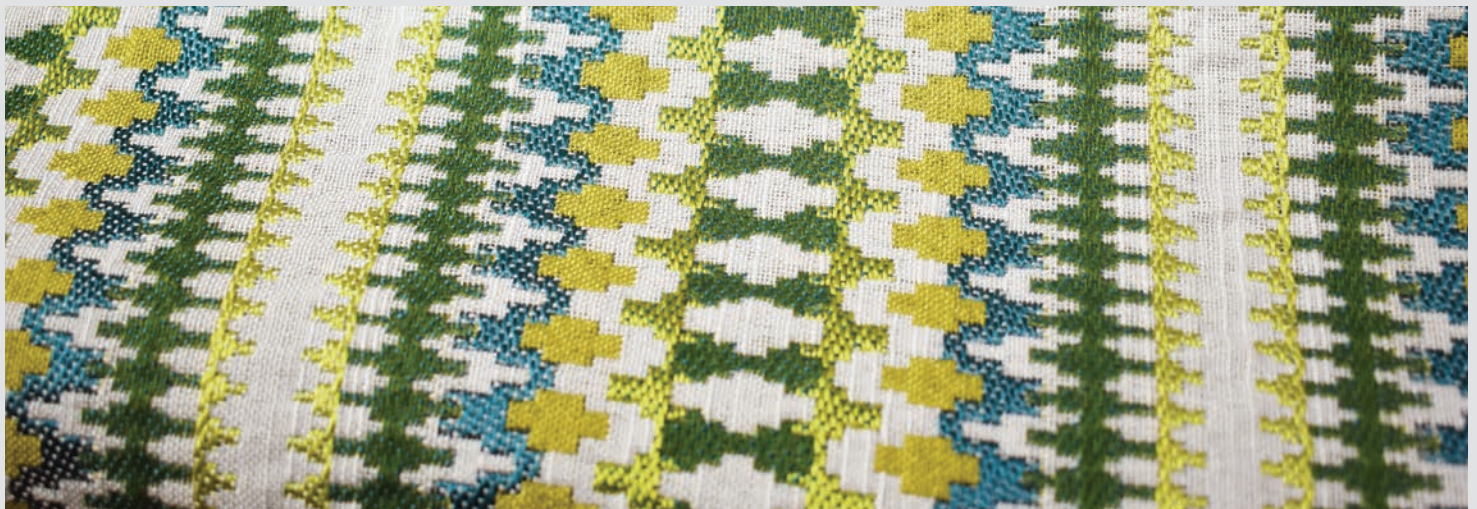
Boysenberry



Canyon



Gemstone



Spring



Jade

GALLANT



Ocean





Aqua



Citrus



Haze



Honey



Misty



Raspberry



Tangelo

GATHERING



Stormy

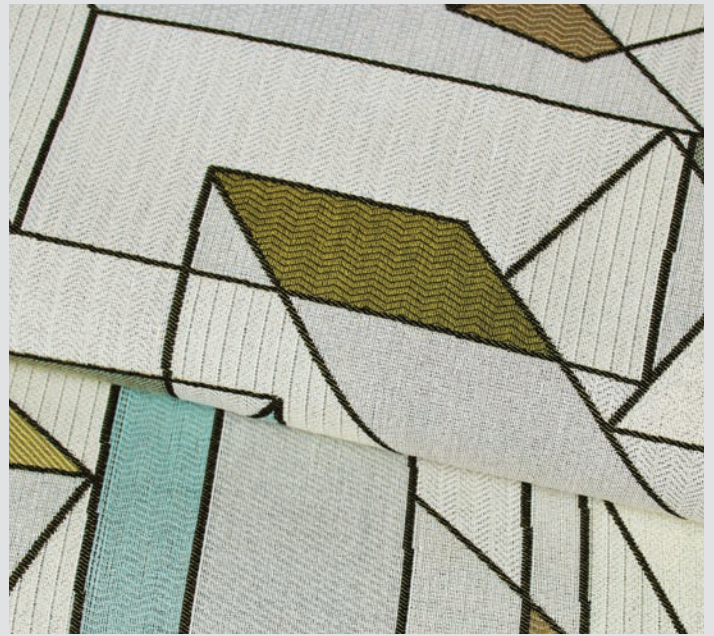


Sunshine





Mesa



Seaspray



Splash

# GEOMETRY



Fiesta





Cascade



Jade



Spruce

GLENVILLE



Calypso





Antique



Coal



Denim



Java



Mulberry



Scarlet



Seafoam



Shale



Shell



Silver



Dove





Admiral

HALLANDALE



Charcoal



Clover



Seaglass



Cognac



Ivory



Persimmon



Platinum



Raspberry



Saffron



Sand



Wicker





Confetti



Jester



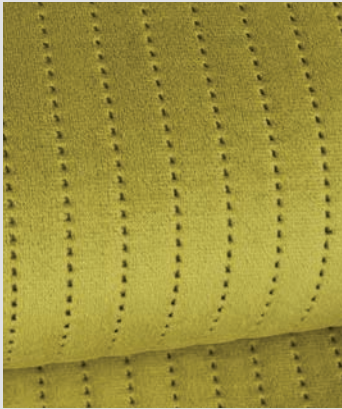
Mocha

HANI



Meadow



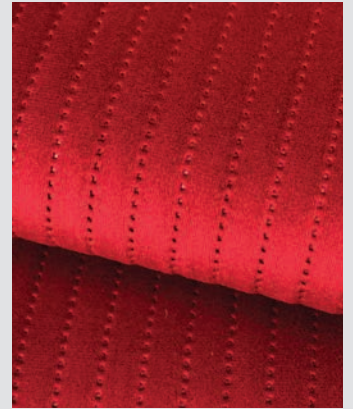


Apple

# HIGH STREET



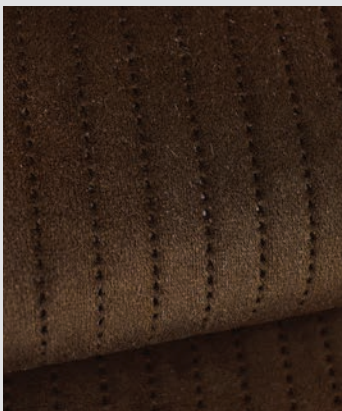
Ash



Cherry



Persimmon



Coffee



Latte



Linen



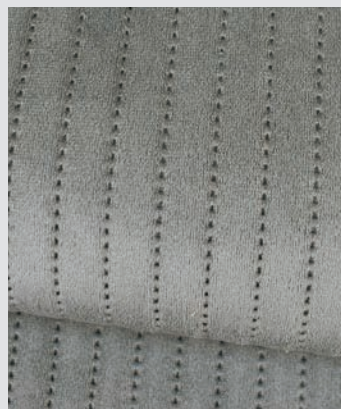
Ocean



Rosewood



Saffron



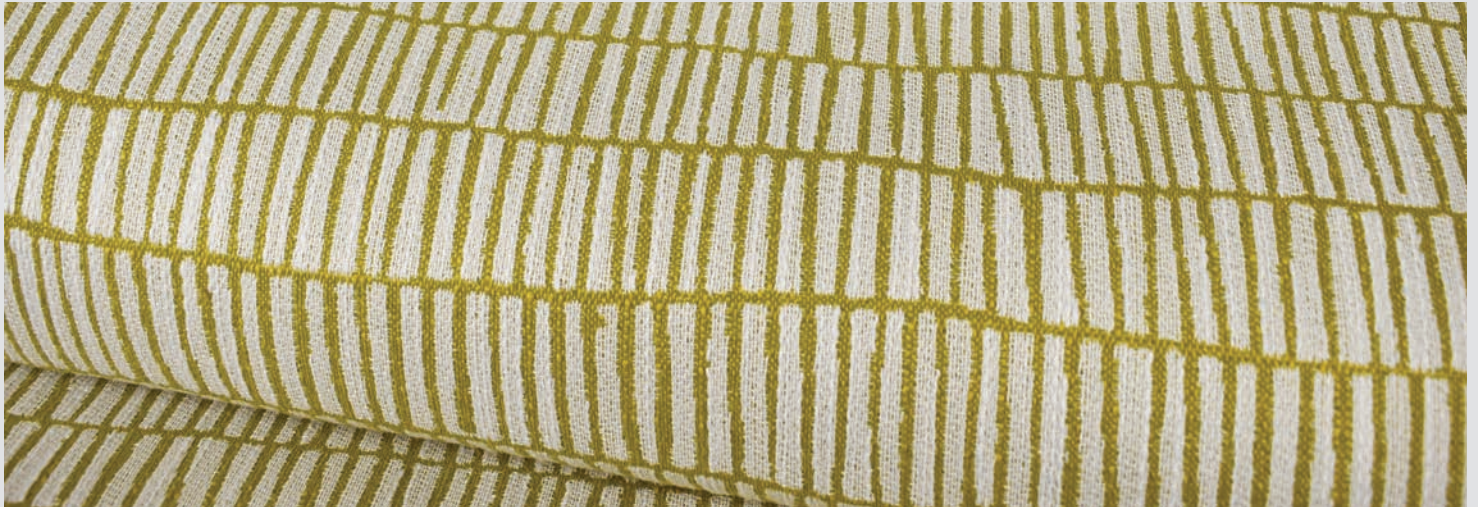
Slate



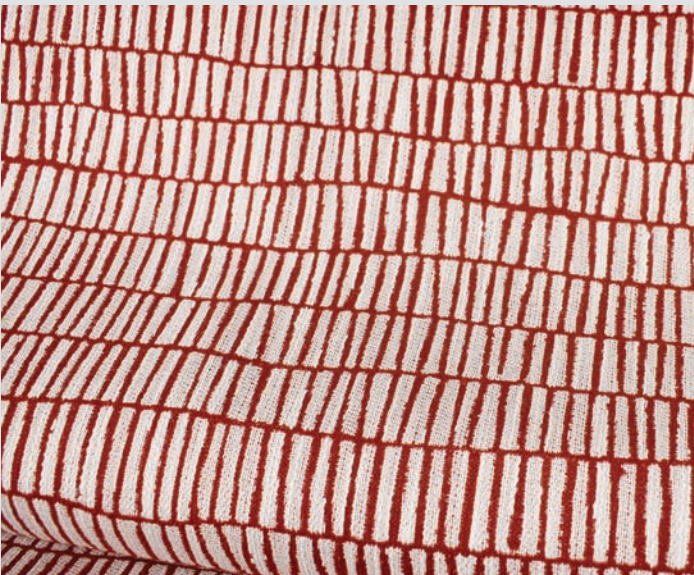
Smoke



# HITCHHIKE



Chartreuse



Apple



Clover



Sea



Taupe



# HOLLYANN



Tangelo



Raspberry



Stormy



Sunny



Sunshine



# HOPKINS



Fern



Aegean



Denim



Mystic



Poppy





Clover



Sea



Taupe

INTERLACE



Chartreuse





Berry



Camel



Cashmere



Latte



Dusk



Fog



Java



Linen



Midnight



Sea



Smoke



Stone





Blossom



Cabana



Retro

KAVITA



Spruce



# KEARSLEY



Moroccan



Cabana



Daffodil



Quarry



Sienna





Bisque



Bloom



Citrine



Haze

KEMPER



Lime



Mimosa



Mist



Persimmon



Smoke



Tidal



Surf



# KEY LARGO



Fiesta



Breeze



Cabana



Sand



Sangria

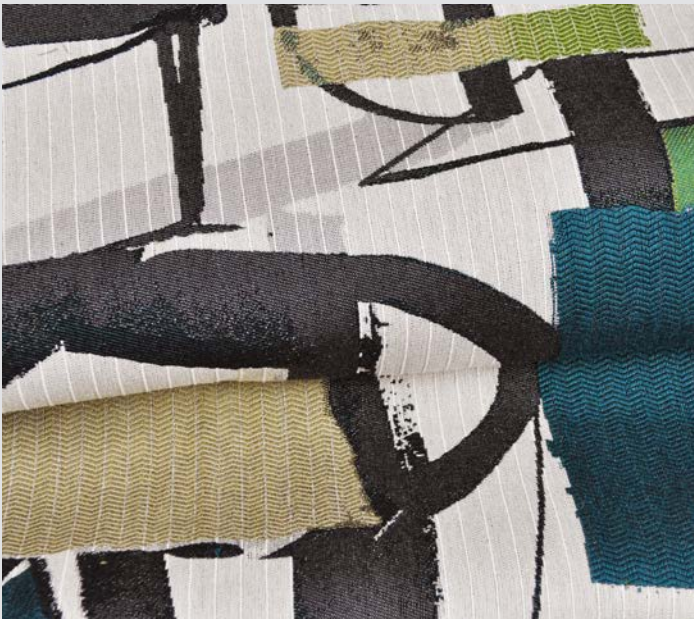




Cobalt



Gypsy



Sea Blue

KISMET



Confetti





Aqua

# LEGENDS



Chocolate



Crimson



Pebble



Emerald



Fawn



Fireside



Metal



Pacific



Parchment



Ruby



Saddle





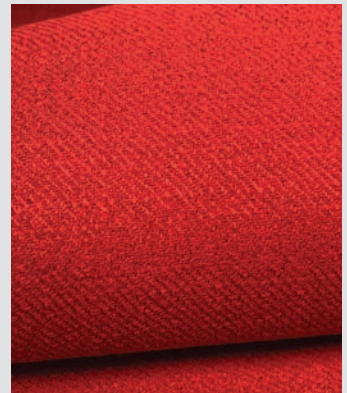
Aubergine



Beach



Caribbean



Carmine



Emerald

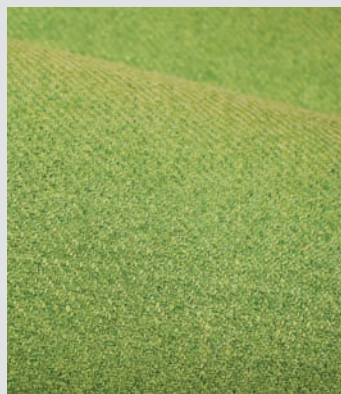
# LOVELOCK



Charcoal



Chartreuse



Clover



Linen



Nickel



Smoke



Tangerine



Tropic





Chartreuse



Coral



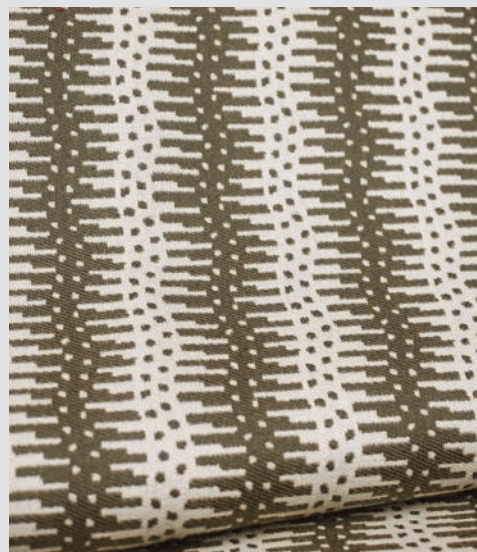
Grass



Sea



Sunshine



Taupe

MACKIE



Teal





Boysenberry



Rainforest



Umber

MADDOX



Baltic





Bronze



Caramel



Denim



Desert

MARANA



Ashwood



Granite



Olive



Onyx



Pebble



Pewter



Scarlet



Sky



Smoke



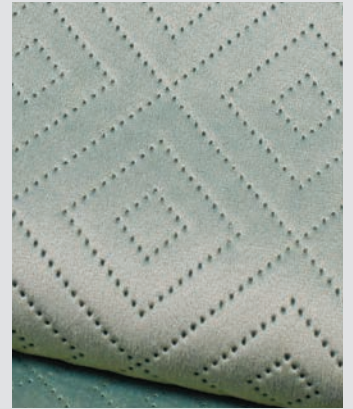


Cherry

MAXFIELD



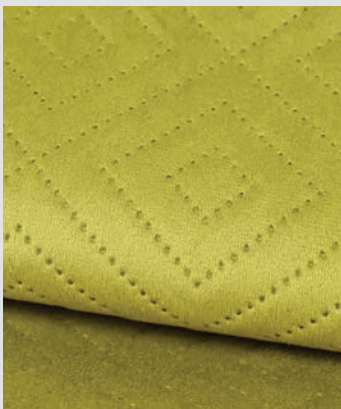
Dove



Mist



Sapphire



Moss



Platinum



Porcelain



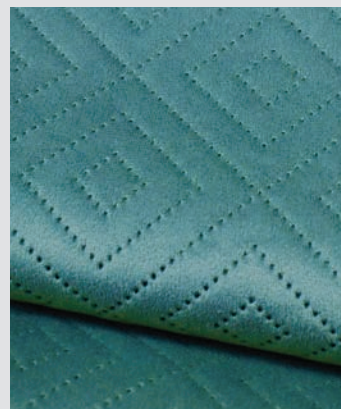
Sand



Slate



Sunflower



Tropic



Wicker





Coral



Ebony



Marigold

MAXWELL

A blue wavy line graphic that starts under the 'M' and ends under the 'L' of the word 'MAXWELL'.





Aegean



Alpaca



Cadet

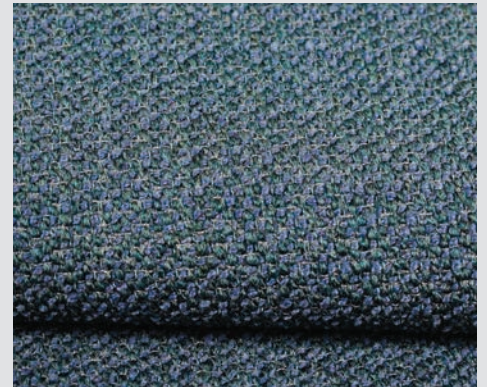


Flannel

MOTO



Imperial



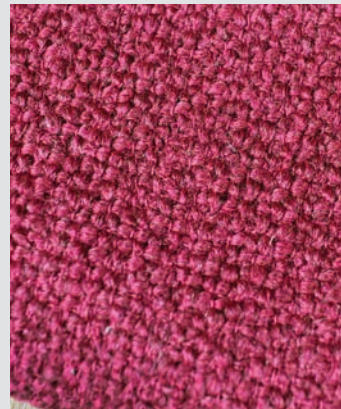
Juniper



Malbec



Pumice



Sangria



Stucco



Lemongrass





Marigold



Ebony



Poppy

MYLA

A blue wavy line graphic that curves under the MYLA text.



# NAHLA



Waterlily



Calypso



Mesa



Nautical



Vintage





Blush



Camel



Caramel



Charcoal



Chartreuse



Chocolate



Cotton



Dove



Linen



Eucalyptus



Garnet



Hazel



Hemp



Indigo



Olive

NEO





Dandelion



Graphite



Grass



Lagoon



Safari

OBSTRUCTION



Sunset



# ODDS AND ENDS



Meadow



Carnival



Confetti



Retro



Taupe



# ORYN



Confetti



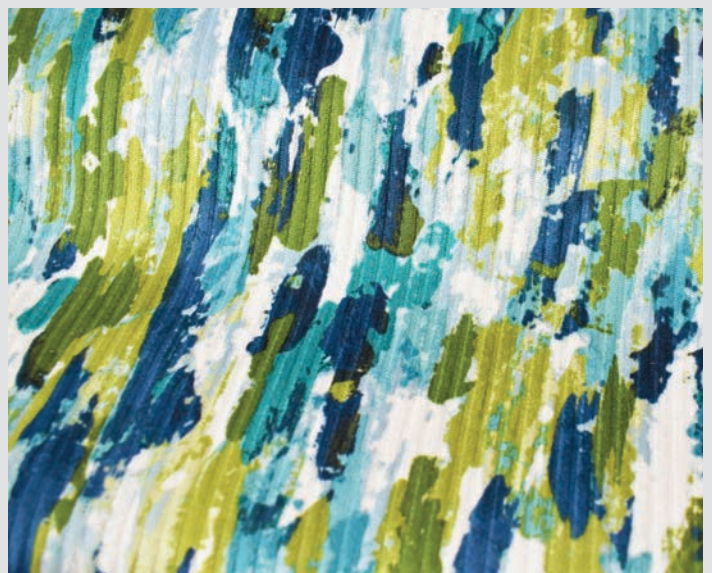
Amalfi



Espresso



Fiesta

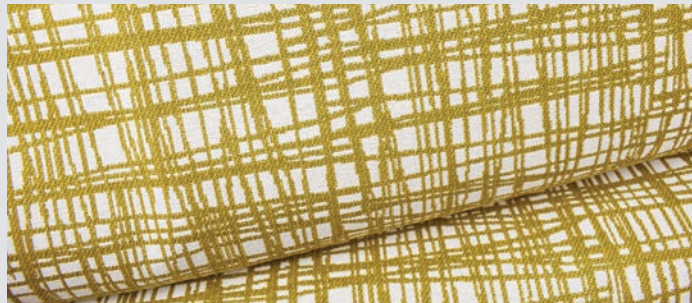


Seaglass



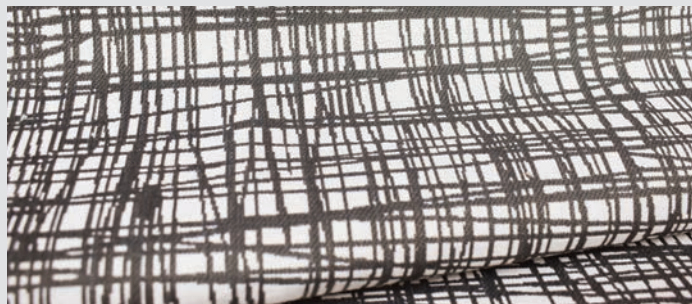


Cadet

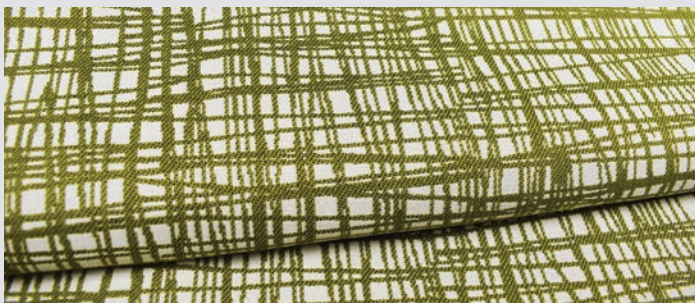


Dandelion

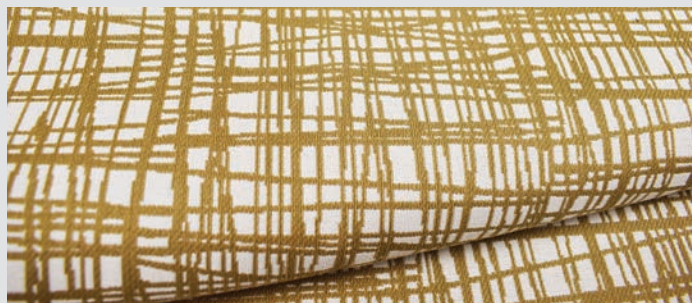
# PEPPER



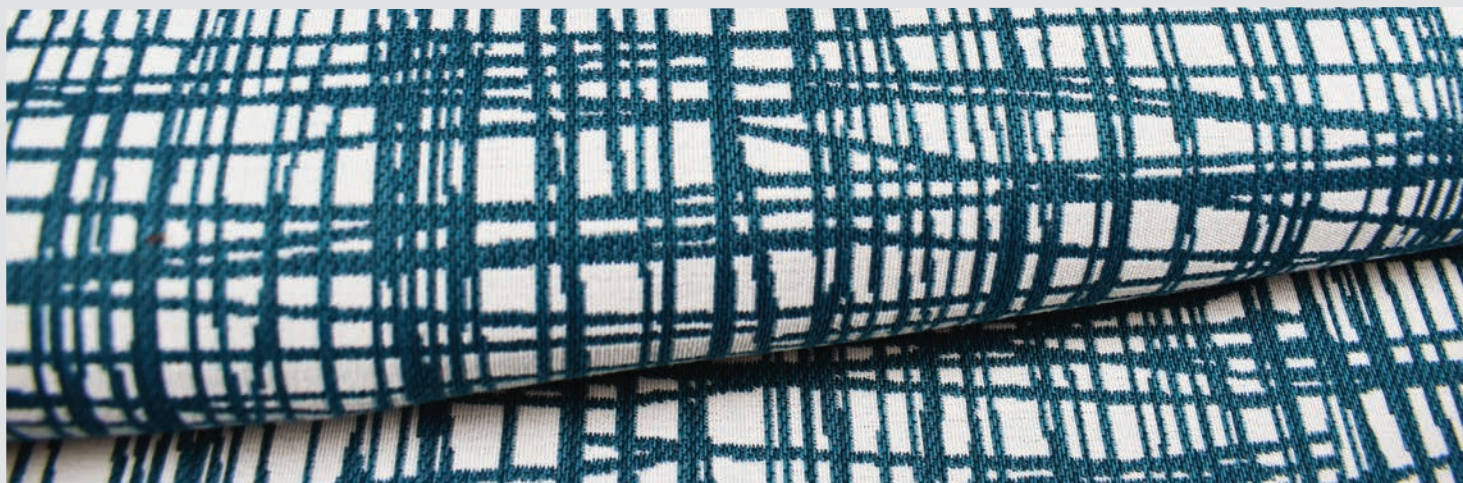
Graphite



Kiwi



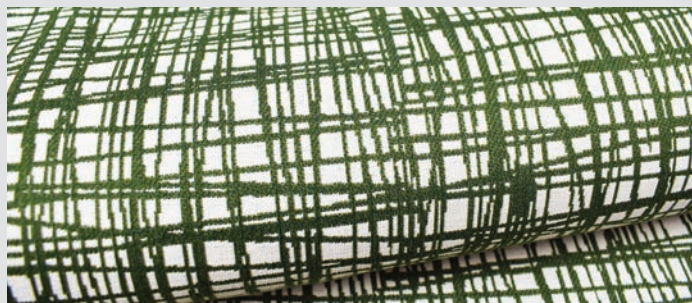
Linen



Lagoon



Melon



Palm



# PETRA



Capri



Godiva



Midnight



Seaspray



Tuscany





Chocolate  
**PEYTON**



Cinder



Clover



Cypress



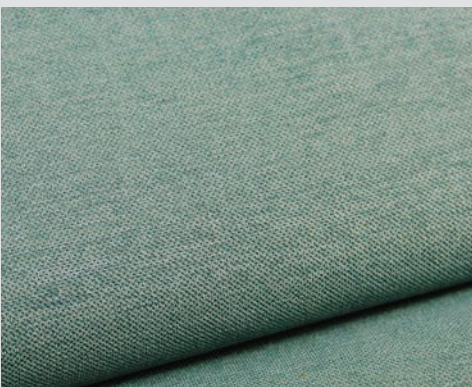
Denim



Fawn



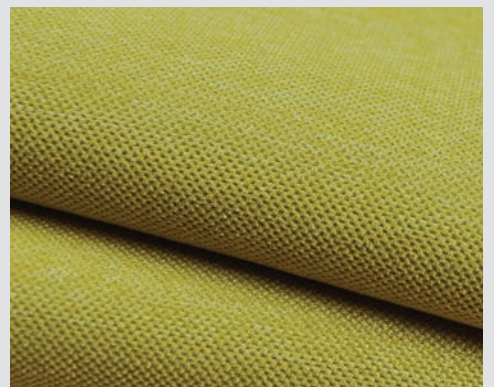
Jade



Lagoon



Light Blue



Mimosa





Navy

PEYTON



Palm



Pearl



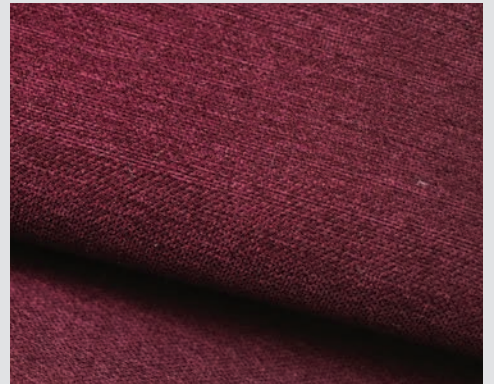
Pepper



Rose



Sahara



Sangria



Shell



Slate



Smokey Blue





Antique



Charcoal

PICCOLO



Chocolate



Cognac



Evergreen



Dove



Jade



Lime





Linen



Pewter



Platinum

PICCOLO



Raspberry



Rust



Seafoam



Storm



Taupe





Bamboo



Brick



Java



Kohl



Muslin



Natural



Stone

POLO CLUB



Teak



Toast





Charcoal



Mink



Scarlet



Graphite



Seaglass

PRESCOTT



Thistle





Atlantic



Ebony



Lime



Scarlet



Platinum

RAEGAN



Whisper





Cypress



Linen



Muslin



Plum



Quartz



Riviera



Charcoal

ROSLIND

A stylized blue wavy line graphic that starts under the 'R' and ends under the 'D' of the word 'ROSLIND'.

Spice



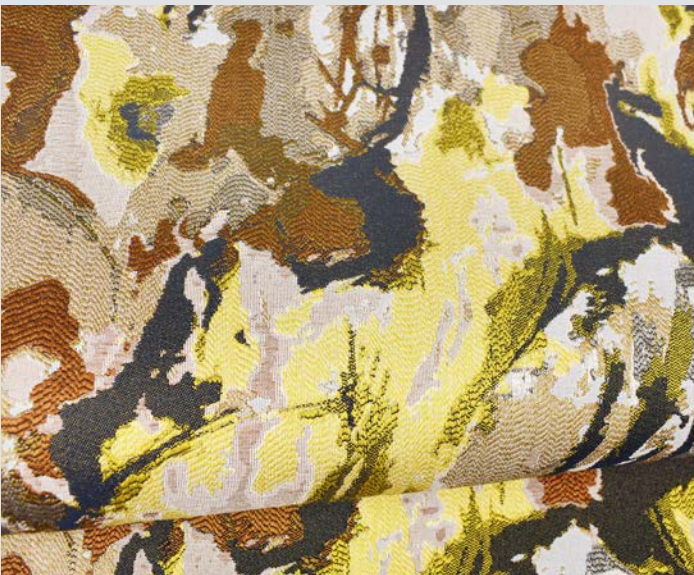
Stone



# SARITA



Wildflower



Autumn



Expression



Freeform



Galaxy





Cedar



Limestone



Tidewater

SONALI



Sedona





Berry

STARLAND



Chianti



Cotton



Java



Denim



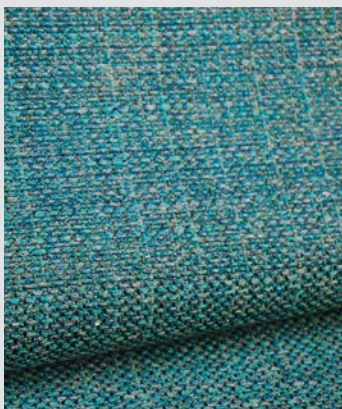
Indigo



Iron



Olive



Seaglass



Smoke



Stonesand



Whiskey





Natural

STILL LIFE



Charcoal



Denim



Dove



Hemp



Henna



Merlot



Molasses



Mushroom



Stone





Nautical

# SUNSHINE BEACH

---



Sea Breeze



# TAZLINA



Mosaic



Aurora



Carnival



Classic



Moroccan



# TIERNAN



Confetti



Baltic



Rustic

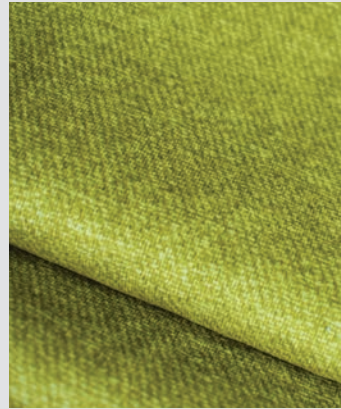




Coral



Cornsilk



Julep



Linen

TWEETIE



Maui



Mocha



Navy



Oat



Pewter



Platinum



Spice



Spray



Sprout





Clover



Sea



Taupe

UNHINGED



Chartreuse





Chartreuse



Dusk



Jungle



Rainfall



Mocha

WEBBER



Seafoam



# WILD GARDEN



Hydrangea



Dahlia



Fern



Harvest



Mist





Confetti



Jester



Mocha

WREN



Meadow





Bark



Linen



Sunset

ZIMBA



Ebony



# LiveSmart Codes

ALAMEDA ICL  
ALISO ICL  
ALPENROSE ICL  
ANNISTON ICL  
ANTONIO ITW  
ARCADIA ICL  
ATLANTIS ICL  
BADABING ICL  
BENAVENTO IBT  
BIANCO ICL  
BLOCK PARTY ICL  
BUBBA ITW  
CALIDORA ICL  
COLBY INW  
CONTOUR ICL  
CORVARA ICL  
DOMANI ICL  
DOVER IBT  
EMILIANO ICL  
EMMIE ICL  
ERINA ICL  
ESTEE IBT  
FINE LINE ICL  
FITCH ICL  
FIXATION ICL  
FLANIGAN IBT  
FLIPPED ICL

FYFE ICL  
GALLANT ICL  
GATHERING ICL  
GEOMETRY ICL  
GLENVILLE ICL  
HALIFAX ITW  
HALLANDALE INW  
HANI  
HIGH STREET IPL  
HITCHHIKE ICL  
HOLLYANN ICL  
HOPKINS ICL  
INTERLACE ICL  
JAYLON ICL  
KAVITA ICL  
KEARSLEY ICL  
KEMPER ICL  
KEY LARGO ICL  
KISMET ICL  
LEGENDS INP  
LOVELOCK INW  
MACKIE ICL  
MADDOX ITW  
MARANA INW  
MAXFIELD IPL  
MAXWELL ICL  
MOTO ICL

MYLA ICL  
NAHLA ITW  
NEO IBT  
OBSTRUCTION ICL  
ODDS AND ENDS ICL  
ORYN IPL  
PEPPER  
PETRA ICL  
PEYTON INW  
PICCOLO ITW  
POLO CLUB INW  
PRESCOTT IPL  
RAEGAN ICL  
ROSLIND INW  
SARITA ICL  
SONALI ICL  
STARLAND IBT  
STILL LIFE IBT  
SUNSHINE BEACH ICL  
TAZLINA INW  
TIERNAN ICL  
TWEETIE ITW  
UNHINGED ICL  
WEBBER ICL  
WILD GARDEN ICL  
WREN ICL  
ZIMBA ICL





1823 Eastchester Drive  
High Point, NC 27265 USA  
336.889.5161  
culp.com