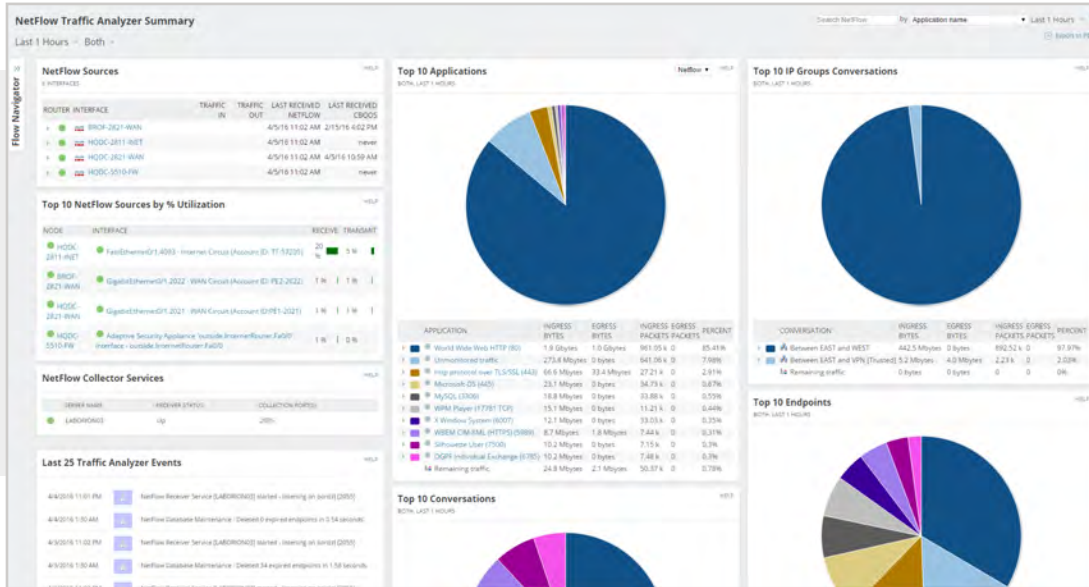


# NetFlow Traffic Analyzer

## Real-Time Network Utilization and Bandwidth Monitoring



SolarWinds® NetFlow Traffic Analyzer (NTA) allows you to capture data from continuous streams of network traffic, and convert those raw numbers into easy-to-interpret charts and tables that quantify exactly how the corporate network is being used, by whom, and for what purpose.

### WHY CHOOSE NETFLOW TRAFFIC ANALYZER?

- » NTA collects and analyzes flow data from multiple vendors, including NetFlow v5 and v9, Juniper J-Flow, sFlow, Huawei NetStream, and IPFIX.
- » NTA supports advanced application recognition with NBAR2.
- » NTA will show you pre- and post-policy CBQoS class maps so you can optimize your CBQoS policies.
- » NTA includes WLC network traffic analysis so you can see what is using your wireless bandwidth.
- » Built on the Orion® Platform, NTA provides the ability to purchase and fully integrate with additional network monitoring modules (Network Performance Monitoring, Config Management, WAN Management, VoIP, Device Tracking, IP Address Management), as well as systems, storage, and virtualization management in a single web console.

## FEATURES

### Bandwidth Utilization Monitoring

#### *Bandwidth Threshold Alerting*

Delivers an instant alert notification, including a list of top talkers when an interface exceeds its bandwidth utilization threshold.

#### *Bandwidth Usage by Application*

Provides valuable insights into which applications are consuming the most network bandwidth, and tracks application traffic arriving from designated ports, source IPs, destination IPs, and even protocols.

#### *Bandwidth Usage by IP Groups*

Analyzes network traffic with custom overlapping IP address groups. Create your own IP address groups to view network traffic the way that you want to see it.

### Network Traffic Monitoring and Forensics

#### *Traffic Analysis Dashboard*

Delivers a comprehensive, customizable view of your network traffic on a single pane of glass, allowing you to spot potential problems quickly with top ten views of network traffic data. Get to the root cause of bandwidth issues with an intuitive point-and-click interface.

#### *Cross-stack Network Data Correlation*

Accelerate identification of root cause by dragging-and-dropping network performance metrics on a common time line for immediate visual correlation across all of your network data.

#### *Network Traffic Forensics*

Enables you to drill down into any element's traffic using multiple views to get the perspective you're looking for. You can investigate and isolate excessive network bandwidth utilization and unexpected application traffic.

#### *CBQoS Performance Views*

Enables you to view network traffic segmented by Class of Service methods, measure effectiveness of your CBQoS policies, and quantify bandwidth consumption by class map.

#### *Border Gateway Protocol*

Enables you to set up customized views of internet traffic for ISPs and organizations to better understand how traffic is balanced across providers.

## Flow-based Monitoring and Reporting

### *Multi-Vendor Device Support*

- » Analyzes Cisco® NBAR2 and NetFlow v5 and v9, Juniper® J-Flow™, IPFIX, sFlow®, Huawei NetStream™, and other flow data
- » Supports devices from Cisco, Extreme Networks, HP®, Juniper, Nortel Networks, Huawei, and other leading vendors
- » Supports NetFlow traffic from VMware® vSwitch

### *Flow-based Reporting*

Enables you to create in-depth network traffic reports with a few clicks, or schedule automatic weekly delivery to your team.

### *Flow Navigator*

Enables you to create and access personalized network traffic views by filtering NBAR2, NetFlow, J-Flow, sFlow, IPFIX, and Huawei NetStream data.

### *Top-Talker Optimization*

Determines which flows are representative of the majority of bandwidth usage. It stores those flows while disregarding flow data from users and applications that have a negligible impact on overall bandwidth. Boost overall performance of SolarWinds NTA up to 10x when capturing flows that represent 95% of the total network traffic.

## SOLARWINDS NETFLOW TRAFFIC ANALYZER DOES MORE

### *Integrated Fault, Performance, and Configuration Management*

Integrates with SolarWinds Network Performance Monitor (NPM), SolarWinds Network Configuration Manager (NCM), and SolarWinds User Device Tracker (UDT). This integration provides a unified solution for fault, performance, configuration management, automated device tracking, and switch port management.

### *Microsoft® Active Directory® Integration*

Leverages your existing Active Directory user accounts to simplify login and account management.

## SYSTEM REQUIREMENTS

HARDWARE	MINIMUM REQUIREMENTS
CPU	NTA Main Poller - Quad Core 3 GHz or better NTA Flow Storage Database - Quad Core 3 GHz or better
Memory	NTA Main Poller - 3GB NTA Flow Storage Database - 16GB
Hard Drive	NTA Main Poller - 3GB NTA Flow Storage Database - 20GB
SOFTWARE	MINIMUM REQUIREMENTS
OS	NTA Main Poller - Windows Server® 2012, 2012 R2, and 2016 NTA Flow Storage Database - Windows Server 2012, 2012 R2, and 2016
Database	Main - NTA shares the main SQL database with Network Performance Monitor Flow Database - NTA includes a Flow Storage Database

## INTEGRATION WITH OTHER SOLARWINDS PRODUCTS

To deploy SolarWinds NetFlow Traffic Analyzer, SolarWinds Network Performance (NPM) needs to be installed on the same server

*NOTE: The minimum server requirements listed assume default configuration. Significantly increasing the polling rate or flow collection rate could result in additional load on the server, which may require a larger CPU or additional memory.*

# ABOUT CONTACT LTD

Contact Ltd. is a government-approved Cyber Security and IT Managed Service Provider, operating 24/7 from our NOC/SOC, located at the heart of our high security Tier 3 data centre in Northampton, UK.

## NO ONE ELSE KNOWS SOLARWINDS LIKE CONTACT.



Contact Ltd. is the UK's leading authority on SolarWinds, with the largest in-house team of SolarWinds-Certified Professionals supporting and managing the network operations of some of the UK's leading organisations.



### ISO27001 TIER 3 UK DATA CENTRE

Contact and its operations are entirely ISO27001-accredited, providing our customers with the assurance that their service solution is being supported by certified professionals.

### 24x7x365 SUPPORT

Contact has a multiskilled, three-tiered professional support team, providing 1st and 2nd line support to clients.

NOC/SOC teams located within our **UK data centre.**

Contact, your preferred Cyber Security & Network Management Partner



High Security  
Tier 3



ISO27001-  
Accredited



Always On.  
24x7x365



## ABOUT CONTACT

Established in 2005, Contact Ltd. is an award-winning, Government-approved service provider, supporting clients 24x7x365 from high security Network (NOC) & Security Operations Centre (SOC) in Northampton, UK.

## 24x7x365 SUPPORT

Contact has a multi-skilled, three-tiered professional support, providing 1st line and 2nd line support operated from our 24x7x365 high security Tier 3 data centre.

## ISO27001

Contact and its operations are entirely ISO27001 accredited, providing customers with the assurance that their service solution is being supported by true professionals.

“

Based in Northampton, Contact's Security (SOC), Network (NOC) and Service Delivery Centre (SDC) are located within our state-of-the-art Tier 3 data centre.



Contact Ltd. (Head Office)  
Clive House, 12 - 18 Queen's Road  
Weybridge, Surrey KT13 9XB

Tel: 03452 75 75 75  
Email: [enquiries@contact.co.uk](mailto:enquiries@contact.co.uk)



Government  
Procurement  
Service  
Supplier

[www.contact.co.uk](http://www.contact.co.uk)