



District
Management
Group

MANAGER'S TOOLKIT

How Strong is Your Innovation Infrastructure?

Originally published in *District Management Journal*, v.3, Winter 2010

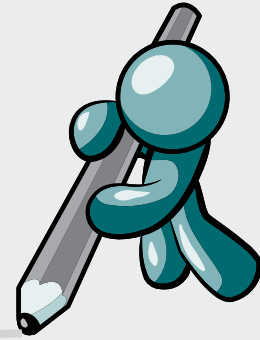
Take this quick test to find out how well you are supporting the innovation process in your district.

How Strong is Your Innovation Infrastructure?

Take this quick test to find out how well you are supporting the innovation process in your district.

Innovation doesn't just happen. Innovative organizations work hard to create opportunities for innovation to bubble up from within their organization, and to seek out and borrow innovative ideas from outside the walls of their organization. School districts have the opportunity to proactively foster innovation by creating an infrastructure that supports and nurtures the innovation process in all its stages.

| Stage | Rate Yourself on the Following Statements | Self Ranking (1-10) 10 = Yes – Absolutely. All the time. 1 = Absolutely not. Never. 0 = I don't know |
|--------------------------|---|---|
| Idea generation | Our district has established a common definition of innovation that is focused on results. | |
| | We regularly hold brainstorming sessions to identify new ideas. | |
| | There is at least one person in our district who is responsible for scanning “outside” the district for promising new ideas. | |
| | A significant number of new ideas have been identified for the district in the past 12 months. | |
| Test & Refine | There is a formal process to evaluate and select the highest priority ideas from the longer list of potential ideas. | |
| | A number of pilot projects have been approved for testing in the past 12 months. | |
| | The district has decided to cut at least one non-performing program in the last 12 months in an effort to redirect resources to higher-potential opportunities. | |
| | Programs are routinely analyzed to judge their effectiveness and to isolate the causal mechanisms of success. | |
| | Program data is gathered to assess effectiveness vis à vis costs. | |
| Replication | Several promising ideas or practices have been replicated in the district in the past 12 months. | |
| | Promising internal and external ideas are routinely evaluated to assess our ability to replicate them. | |
| | There is a budget for replicating promising practices identified within or outside of the district. | |
| Overall | We have a formal system to track and monitor promising ideas and practices, from the idea generation stage until the replication stage. | |
| | We have a team responsible for identifying promising ideas and monitoring their progress. | |



Score Your Results

Add your scores to get to a grand total:

TOTAL SCORE _____

| Your Score | Your opportunity for improving support of the innovation process |
|------------|---|
| 90+ | You have an infrastructure in place that supports the innovation process, but you might need to tweak your approach in a couple areas. |
| 60-89 | You have a good start on putting an innovation-supporting infrastructure in place, but you still have significant gaps. |
| 30-59 | You have some systems in place, but there are plenty of opportunities for you to build out your innovation infrastructure at all stages of the process. |
| 0-29 | You have significant opportunities to put processes and systems in place to encourage innovation at all stages of the process. |