

SPECIFICATION



36W-RGB-W-20



36W-RGB-B-20



36W-RGB-W-20-IP65



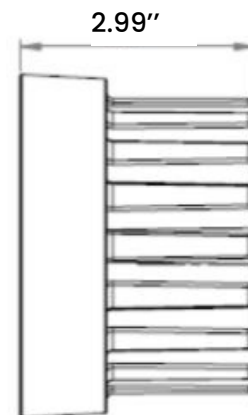
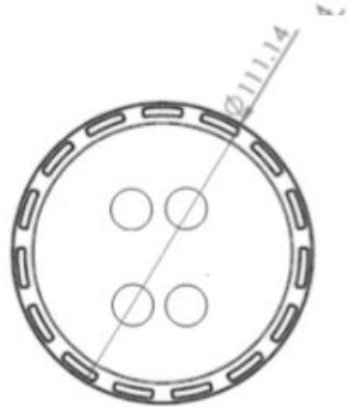
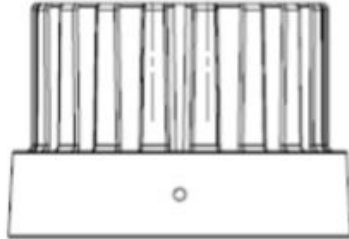
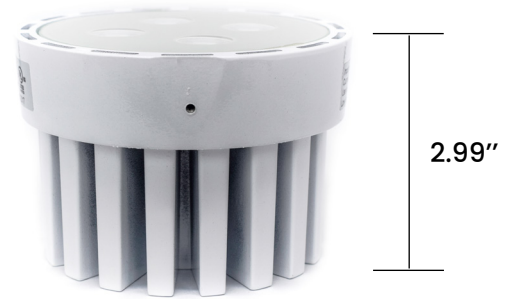
36W-RGB-B-20-IP65



Power	36 Watts
Color Temperature	RGB
Total Luminous Flux	At full 255/255/255: 2042 Lumens
LED CRI	RGB not applicable
Beam Angle	20D
LED	COB
LM Rating	LM-80
Bulb Dimension	3" x Ø 4 1/6"
Certifications	cULus E476753
Compatible Driver	DRV-D-200-Z4 DMX Power Driver (cULus E478463) DMX-SR2112 /DMX Driver, 12 channels, 200-350mA
Power Supply	PS-SR2112-96 /Power supply 96W (Only If Use DMX-SR2112)
Working Temperature	-30C to 60C
IP Grade	IP20 Standard (Special order IP65)
Life Span	50,000 Hours
Warranty	5 Year Limited Warranty

36W LED FIXTURE

FRONT VIEW



36W LED FIXTURE

COLOR VARIATION TEST: 36W

36 WATTS		COLOR VARIATION TESTS								
TEST No.	R/G/B/	REPORT #	X	Y	TRUE CCT	TARGET CCT	ANSI TOLERANCE CCT	LUMENS	WATTS	EFFICACY
1	255/097/000	L1604269	0.5563	0.4123	1774	1800		581	22.28	26.1
2	247/124/005	L1604267	0.5062	0.4179	2212	2200		649	23.62	27.5
3	222/138/013	L1604265	0.4508	0.4012	2756	2700	2725 ± 145	661	23.76	27.8
4	221/149/014	L1604264	0.4408	0.4103	2986	3000	3045 ± 175	680	24.33	27.9
5	255/204/018	L16042510	0.4181	0.4192	3457	3500	3465 ± 245	868	28.05	30.9
6	235/204/033	L1604255	0.3735	0.3805	4218	4000	3985 ± 275	838	28.16	29.8
7	230/205/040	L1604263	0.3597	0.3662	4550	4500	4503 ± 243	844	28.38	29.7
8	175/212/028	L1604259	0.3475	0.4126	5090	5000	5028 ± 283	790	26.24	30.1
9	228/199/063	L1604258	0.3291	0.313	5969	5700	5665 ± 510	850	29.1	29.2
10	187/187/056	L1604223	0.3143	0.318	6500	6500	6530 ± 510	753	26.62	28.3

Colometric Reports 36W-20D / Consult folder Colorimetric Reports
From 0%-100%, no Flicker as per industry standard
 Consult folder **Flicker Reports Files: R1604261-R1**