

An abstract network diagram composed of numerous nodes (circles) of varying sizes and connecting lines, rendered in a light brown color against a dark gray background. The diagram is more densely packed on the right side of the slide.

Enabling a Culture of **QUALITY**

Enter

What's your biggest **CHALLENGE?**

Discover how organizations can tackle the barriers faced when establishing and maintaining a quality-driven culture.

Centralized Approach

Project management is difficult, especially as project size and complexity increase. Phase gate management and a centralized repository enable visibility and streamline execution.

Single Source of Truth

Without standardized comprehensive tools, how can anyone execute CI projects consistently across teams without confusion?



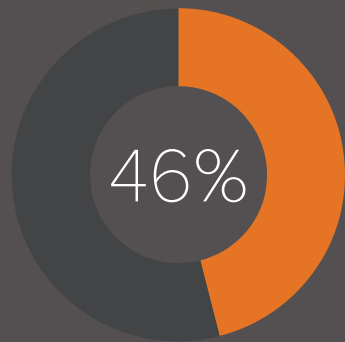


Stakeholder Buy-in

01 02 03

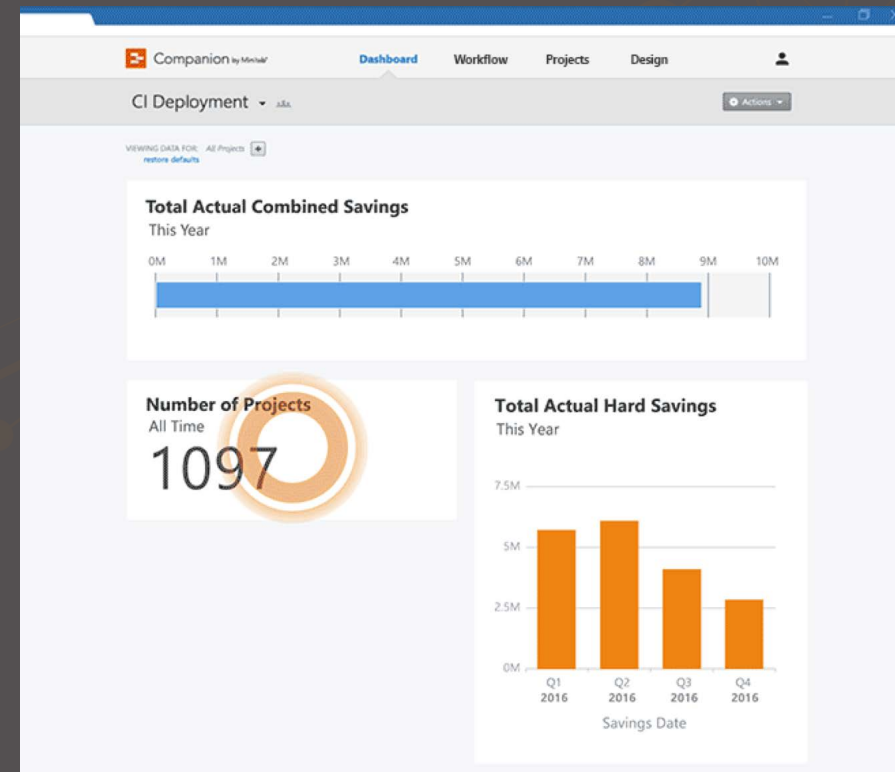
Strive for Strategic Alignment

Demonstrate how projects and activities contribute to strategic objectives and deliver ROI with a real-time view of key performance indicators easily accessible in the dashboard.



46% of CI professionals cite stakeholder support as the biggest challenge to their continuous improvement initiatives.

Source: Minitab survey results





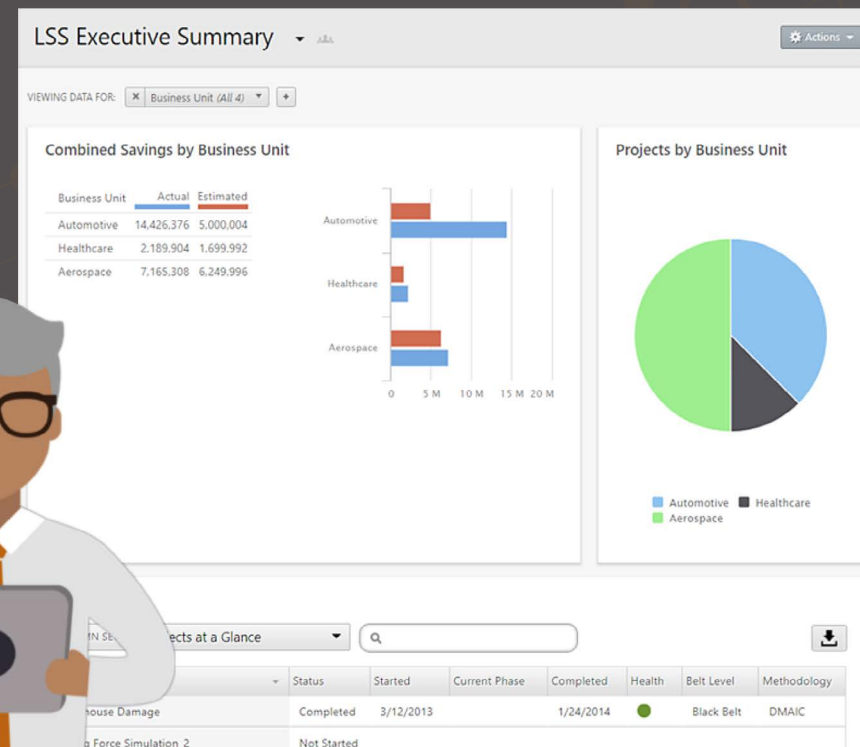
Stakeholder Buy-in

01 02

Don't make it hard on yourself to communicate value back to the business

Poor visibility into the project portfolio's progress and financial metrics can be detrimental in driving support from the top.

Continually give visibility to your results by easily generating tailor-made reports that highlight key milestones and ROI



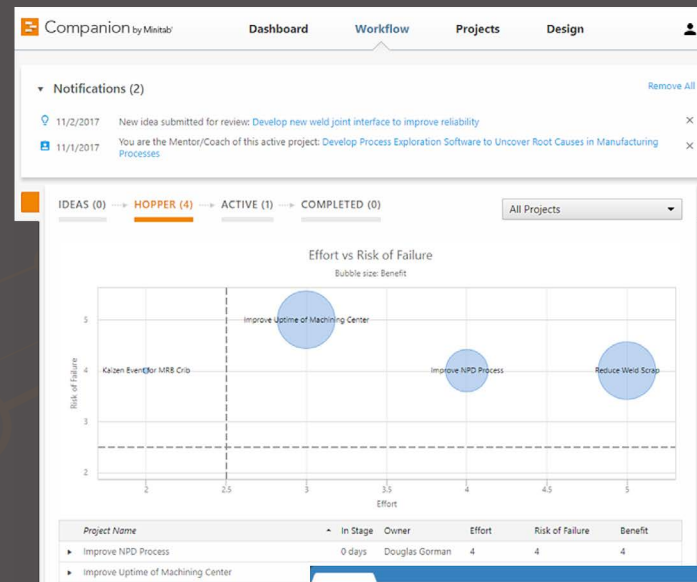


Centralized Approach

01 02 03

Keep it moving – optimize your process

Formal notifications and phase gate reviews enable real-time communication of readiness. Identify the proper stakeholders who should review and approve documents. Day-to-day project management is streamlined, and stakeholders are automatically notified when input is needed.



The screenshot shows the Companion by Minitab software interface with the 'Workflow' tab active. A table titled 'PHASES' is displayed, showing the approval status and number of reviewers for each phase.

Phase	Approval Status	Reviewers
Define	Approved	3
Measure	Approved	2
Analyze	Submitted	2
Improve	Not Submitted	2
Control	Not Started	4



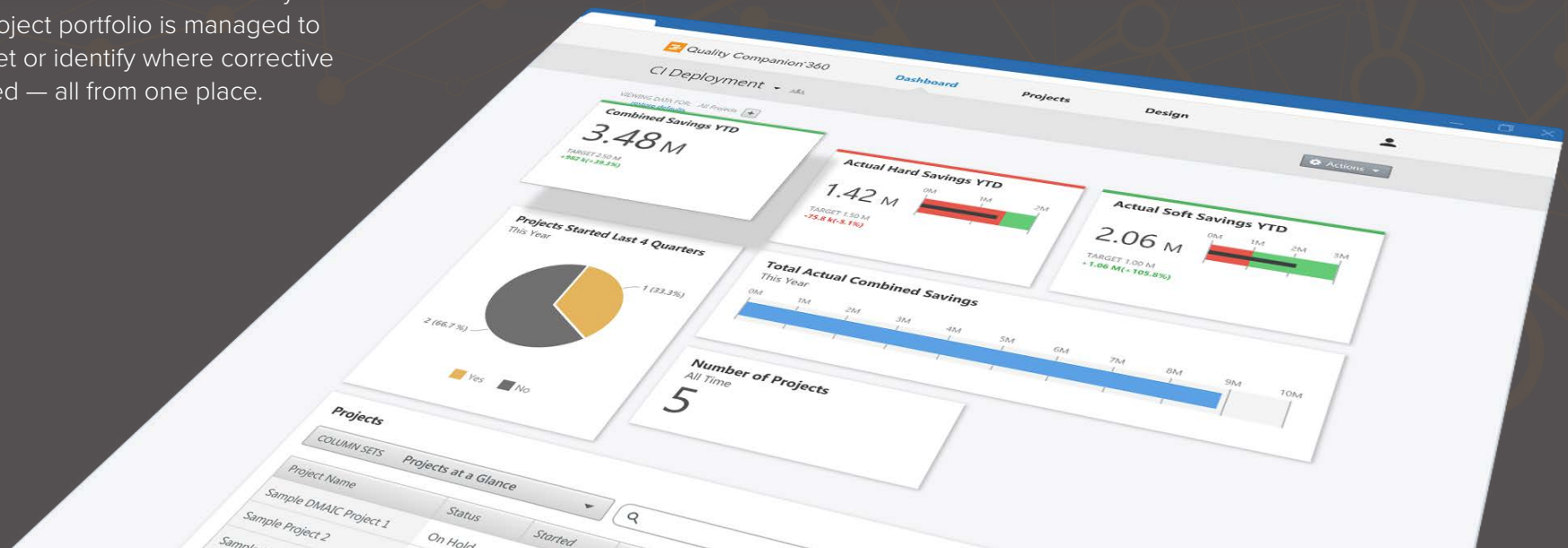
Centralized Approach

01 02 03

Eliminate information gaps

Multiple spreadsheets in various systems and cumbersome internal solutions don't allow for seamless visibility and up-to-the-minute tracking of performance metrics that enable prioritization of resources. Focus your efforts on projects that need them most. Quickly ensure your project portfolio is managed to time and budget or identify where corrective action is needed — all from one place.

“[Companion] helps to find information all the way down to the assets. It's easy to monitor that information and provides the opportunity for leaders to manage the entire portfolio.”





Centralized Approach

01 02 **03**

Streamline processes and activities to align resources

Customize built-in project roadmaps to your project, your organization or your industry to plan and manage projects consistently and efficiently.

A centralized approach encourages teams to share project templates and best practices that save time and easily replicate success.





Single Source of Truth

01 02 03

Ensure all project information is in one place and immediately available

A project repository that houses all of your team's individual projects in a secure and centralized location avoids confusion and unnecessary emails clogging your inbox. Reduce duplicative efforts and maintain version control.

Better yet, make sure it can be accessed from anywhere.

The screenshot displays the 'Companion by Minitab' software interface. The top navigation bar includes 'Dashboard', 'Projects' (which is highlighted), and 'Design'. Below the navigation bar, there is a 'Projects' section with a toolbar containing 'Move', 'Delete', 'Share' (highlighted with a tooltip), 'Email', and 'Exclude from Dashboard'. A dropdown menu on the right shows 'Projects I Own'. The main area contains a table of projects with columns for 'Name', 'Last Modified', and 'Checked Out By'.

<input type="checkbox"/>	Name		Last Modified	Checked Out By
<input checked="" type="checkbox"/>	Drug delivery patch development		10/17/2017 2:46 PM	
<input type="checkbox"/>	Grinding Disc Scrap Reduction		10/17/2017 2:46 PM	
<input type="checkbox"/>	On-time custom order delivery		10/17/2017 2:46 PM	
<input type="checkbox"/>	Reduce packaging costs by 15 percent		10/17/2017 2:46 PM	



Single Source of Truth

01 02 **03**

Drive competitiveness

Attaining and keeping your competitive advantage is a continuous process of learning and implementation.

Integrated tools for brainstorming and analysis promote improvement and innovation that resonate with customers

Brainstorming

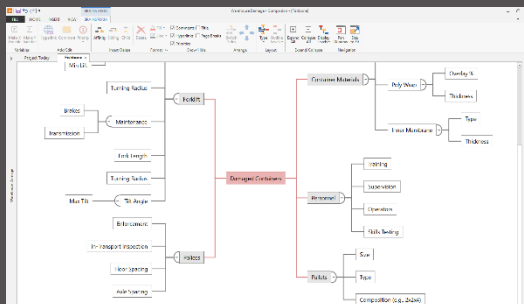
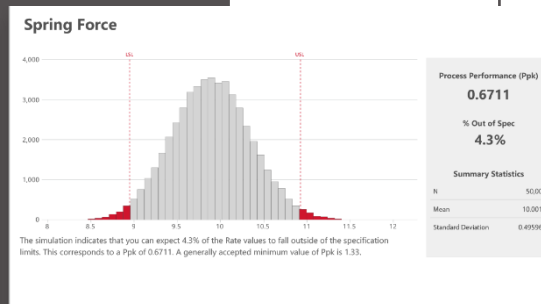
- Fishbone
- Idea Map
- CT Tree

Analytics

- Monte Carlo Simulation
- Parameter Optimization
- Sensitivity Analysis

Quality Function Deployment

- Pairwise
Comparison Matrix
- House of Quality
- Design Scorecard
- Pugh Matrix

**Brainstorming****Monte Carlo Simulation**

