

THE LACY LEDGER

Construction news and trends, plus a little light-heartedness

Fall 2003

Fast Track Projects

Construction At The Speed Of Light!

Western Wireless

Grand Island, Nebraska

Lacy Construction Company met several unique challenges this past summer. The MTSO expansion at Western Wireless was just one of the projects that challenged us with an aggressive schedule featuring several crucial deadlines to be met.

The addition to the existing structure was constructed of masonry foundation with split faced veneer and metal siding. Once contracts were signed, we had 30 days to perform the initial phase of constructing the shell and having it ready for equipment installation. The MTSO expansion was designed with specialized mechanical and electrical systems to support the new equipment. This newly remodeled structure will enhance cell phone communication throughout the country.

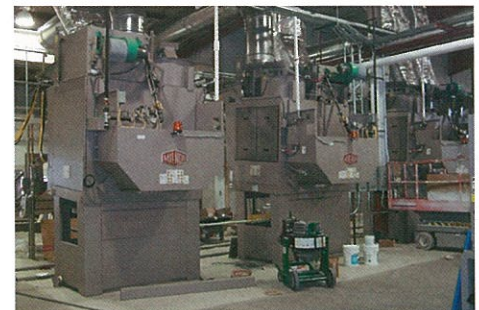
With the tight schedule on this project, Lacy's top notch team of project managers and Western Wireless personnel were meeting on a daily basis to ensure the project moved along rapidly and smoothly. When projects have such an accelerated timetable, having top-of-the-line subcontractors working alongside Lacy's staff is critical, and our subcontractors know they can depend on us. After all, we've been in business for more than 50 years.



Western Wireless in
Grand Island, Nebraska

summer. This 30,000-square-foot warehouse was renovated into a hi-tech, high speed laundry in less than 90 days. The new facility will handle up to 8 million pounds of laundry annually from three Nebraska hospitals.

The challenge of getting this laundry up and running included installing the laundry equipment during construction. The tunnel washer is larger than a bus and dumps 130 pounds of laundry every two minutes. The four dryers dry 240 pounds every 10 minutes; when the laundry reaches a certain level of dryness, the machine discharges the item and over to the folding machine it goes. The automatic folder will fold 18 pieces per minute, a process that includes ironing,



One of the four dryers at the Healthcare
Laundry Services facility.

folding, sorting and stacking the items before moving them along a conveyer belt. Clearly this was one job that Lacy had to be on top of or things could have gotten messy!

more on page 4: see Builders Warehouse

Healthcare Laundry Services Facility

Grand Island, Nebraska

Transforming a beer distribution center into a modern laundry facility was another of Lacy Construction's fast paced jobs this

LACY

CONSTRUCTION COMPANY

Premier Builders in The Heartland

3356 W. Old Highway 30

P.O. Box 188

Grand Island, NE 68802

TEL: 308-384-2866

TOLL-FREE: 800-321-LACY (5229)

FAX: 308-384-2883

WEBSITE: www.lacygc.com

Building Systems

A Solution to Every Problem

Lacy Construction always strives to bring the right building system to our clients. We recognize that our clients' building needs are unique to them; we don't try to make one system fit everyone's needs. Each system offers advantages and disadvantages, depending on the project. In this issue, we'll talk briefly about pre-engineered metal buildings, or metal buildings, as some would say.

A metal building is a system that is delivered to the site as a package. The structure and outer protective layer are made of steel. The outer protective layer of steel is usually 24 gauge material. When we install roofs on a metal building, we highly recommend that a standing seam system be used. This will reduce the potential for roof leaks.

The engineering on a metal building is completed before the buyer even thinks about their project. Metal buildings are designed using a library of standard building designs. Although there are limitations on size, shape, structural location and even color, the metal building is customizable to meet most of your needs.

The system is economical to both build and operate. It's great for open space requirements. Buildings can be adapted for many different uses. The efficiencies are lost when too much customization is performed. A metal building requires more maintenance on the finished materials and can be damaged more easily than other systems. Because of the thin protective layer, you should be concerned with security and safety when using a metal building. In our next issue, we'll discuss masonry uses in buildings.

Planning A Project?

Or do you know someone who is? Lacy Construction can be a valuable resource during the planning stages. Call Jerry Huisman at 800-321-5229 to discuss where we can save you time and money in a building project.

Grand Island Projects In Progress...

- Veterans Home
- Grounds to Go
- St. Francis Hospital Surgery Addition
- Central Community College
- Goodwill Industries of Greater Nebraska
- Central District Health Department



Placing 20,000 square feet of concrete at Builders Warehouse in Kearney.

Builders Warehouse Kearney, Nebraska

continued from page 1

When you pour 20,000 square feet of concrete in seven hours, you'd better now what you're doing and have the best equipment available to work with. That's exactly what Lacy Construction did twice last July.

Builders Warehouse in Kearney was adding a drive-through warehouse facility and they looked to Lacy Construction to handle their concrete needs. To help this large project run smoothly, work began at 3 am with a crew of 21 people. By avoiding the heat of the day, complications brought on by the high temperatures were not an issue.

Since Lacy owns and operates a state-of-the-art laser screed, this job took two days, as opposed to the two weeks it would have taken using standard methods. Seven hundred cubic yards of concrete would have been an overwhelming task had it not been for Lacy's years of experience.

Visit our website at www.lacygc.com



Grand Island, NE 68802
P.O. Box 188
3356 W. Old Highway 30

Premier Builders in The Heartland

LACY
CONSTRUCTION
COMPANY

PRST STD
US POSTAGE
PAID
Grand Island, NE
Permit No 28